

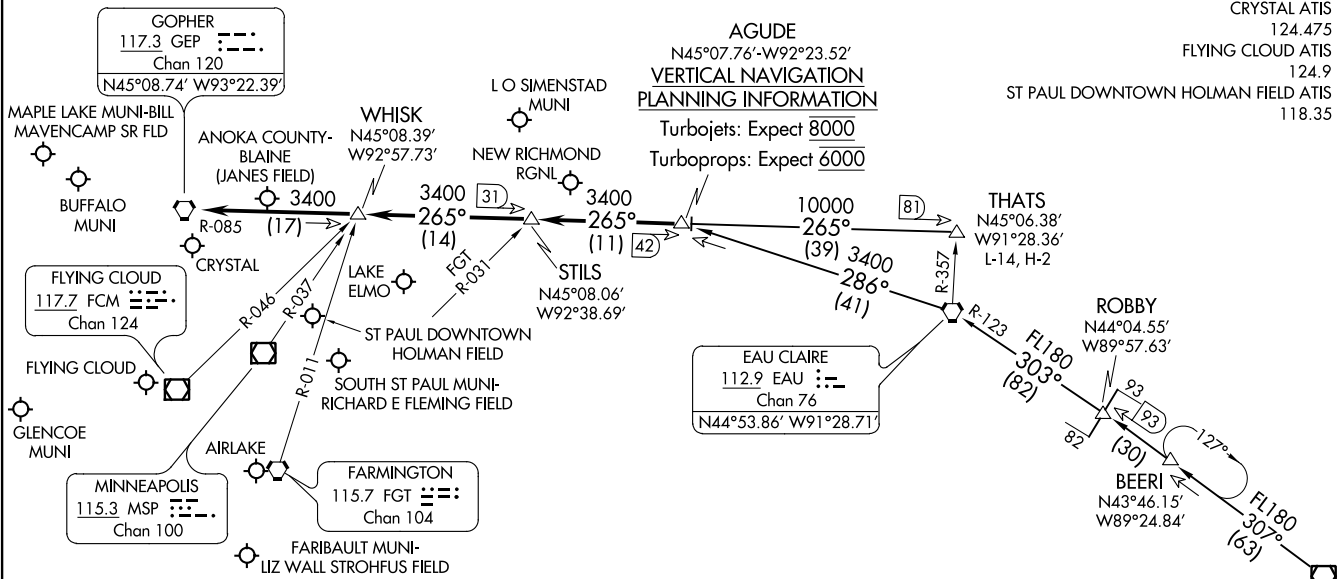
AGUDE FIVE ARRIVAL
(AGUDE:AGUDE5) 120CT17

AGUDE FIVE ARRIVAL
17285

NOTE: Chart not to scale.
NOTE: DME and RADAR required.

MINNEAPOLIS APP CON
121.2 335.5
 ANOKA COUNTY BLAINE (JANES FIELD) ATIS
120.625
 CRYSTAL ATIS
124.475
 FLYING CLOUD ATIS
124.9
 ST PAUL DOWNTOWN HOLMAN FIELD ATIS
118.35

AGUDE
N45°07.76'-W92°23.52'
VERTICAL NAVIGATION
PLANNING INFORMATION
 Turbojets: Expect 8000
 Turboprops: Expect 6000



ARRIVAL ROUTE DESCRIPTION

BADGER TRANSITION (BAE.AGUDE5): From over BAE VOR/DME on BAE R-307 to ROBBY INT then on EAU R-123 to EAU VORTAC, then on EAU R-286 to AGUDE/EAU 41 DME. Thence. . . .

THATS TRANSITION (THATS.AGUDE5): From over THATS INT on GEP R-085 to AGUDE/GEP 42 DME. Thence. . . .

. . . . From over AGUDE/GEP 42 DME via GEP R-085 to GEP VORTAC, then expect RADAR vectors to final approach course.

AL-263 (FAA)

MINNEAPOLIS-ST PAUL, MINNESOTA

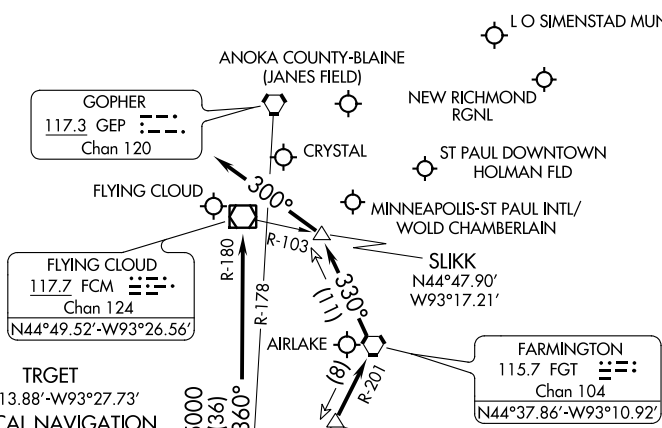
MINNEAPOLIS-ST PAUL, MINNESOTA

TWOLF THREE ARRIVAL

AL-264 (FAA)

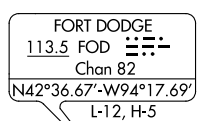
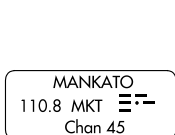
MINNEAPOLIS, MINNESOTA

MINNEAPOLIS APP CON
 126.95 335.5
 118.725 (MSP RWY 35)
 ANOKA COUNTY ATIS
 120.625
 CRYSTAL ATIS
 124.475
 FLYING CLOUD ATIS
 124.9
 MINNEAPOLIS D-ATIS ARR
 135.35 239.275
 ST PAUL DOWNTOWN ATIS
 118.35



TRGET
 N44°13.88'-W93°27.73'
VERTICAL NAVIGATION
PLANNING INFORMATION

MSP: Expect 11000
 All other airports:
 Turbojets: Expect 8000
 Turboprops: Expect 7000



NOTE: DME and RADAR required.

(NARRATIVE ON FOLLOWING PAGE)

NOTE: Chart not to scale.

NC-1, 29 MAR 2018 to 26 APR 2018

NC-1, 29 MAR 2018 to 26 APR 2018

TWOLF THREE ARRIVAL

MINNEAPOLIS, MINNESOTA

ARRIVAL ROUTE DESCRIPTION

FORT DODGE TRANSITION (FOD.TWOLF3): From over FOD VORTAC on FOD R-032 to TWOLF/FOD 52 DME, thence

. . . .from over TWOLF/GEP 112 DME via GEP R-178 to KGEED/GEP 84 DME, then as depicted to TRGET INT/GEP 55 DME. Thence. . . .

LANDING MSP RUNWAYS 12L/R: From over TRGET INT via FGT R-201 to FGT VORTAC, then via FGT R-330 to SLIKK INT/FGT 11 DME, then via heading 300° for RADAR vectors to final approach course.

LANDING MSP RUNWAYS 30L/R, 4, 22, 17, 35: From over TRGET INT on FGT R-201 to FGT VORTAC, then via RADAR vectors to final approach course.

LANDING ALL OTHER AIRPORTS: From over TRGET INT via FCM R-180 to FCM VOR/DME, then expect RADAR vectors to final approach course.

NC-1, 29 MAR 2018 to 26 APR 2018

NC-1, 29 MAR 2018 to 26 APR 2018