

WAAS CH <b>69532</b> <b>W10A</b>	APP CRS <b>103°</b>	Rwy Idg TDZE Apt Elev	<b>5006</b> <b>897</b> <b>906</b>
--	------------------------	-----------------------------	---

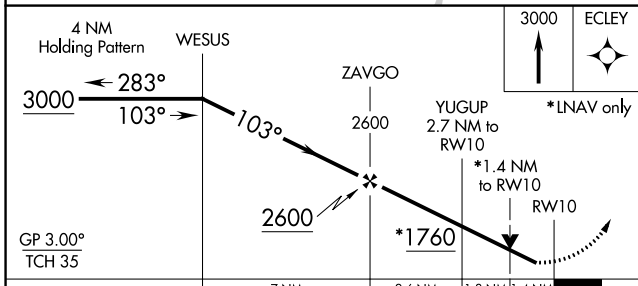
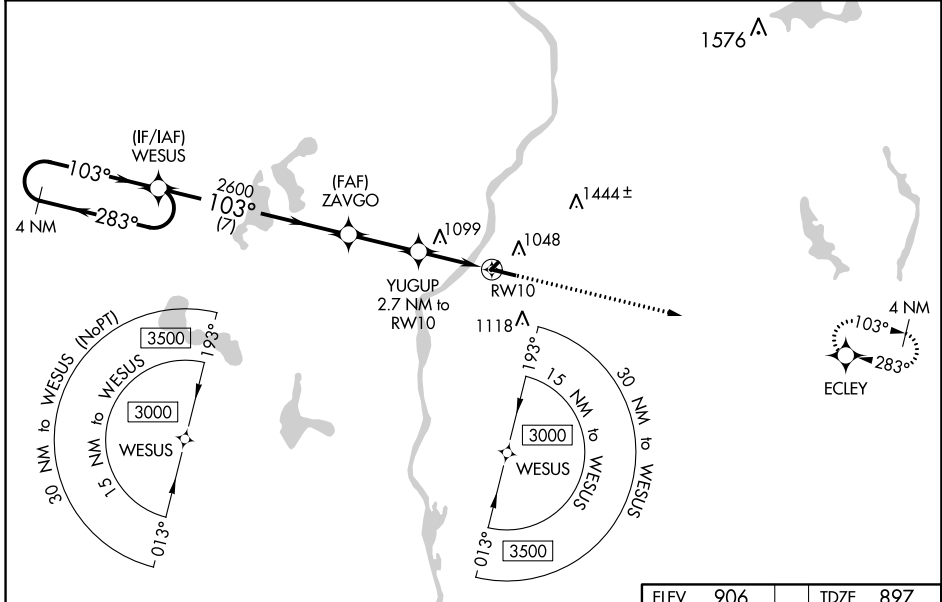
# RNAV (GPS) RWY 10

L.O. SIMENSTAD MUNI (O/E/O)

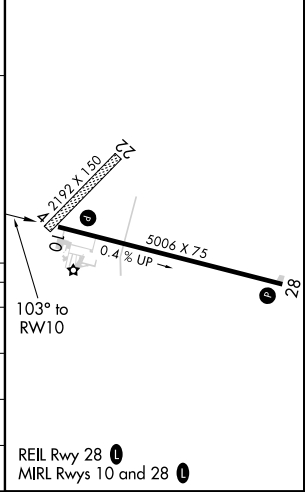
**⚠** For uncompensated Baro-VNAV systems, LNAV/VNAV NA below -16°C (4°F) or above 54°C (130°F). DME/DME RNP-0.3 NA. VDP and Baro-VNAV NA when using Anoka County-Blaine Arpt (Janes Field) altimeter setting. When local altimeter setting not received, use Anoka County-Blaine Arpt (Janes Field) altimeter setting and increase all DA 57 feet and all MDA 60 feet. Increase LPV all Cats and LNAV Cat C visibility 1/8 mile, LNAV/VNAV all Cats and Circling Cat C visibility 1/4 mile. Helicopter visibility reduction below 3/4 SM NA.

**MISSED APPROACH:**  
Climb to 3000 direct ECLEY and hold.

AWOS-3 <b>119.925</b>	MINNEAPOLIS APP CON <b>121.2 335.65</b>	GCO <b>121.725</b>	CTAF <b>122.9</b> <b>0</b>
--------------------------	--	-----------------------	-------------------------------



ELEV	906	TDZE	897
------	-----	------	-----



CATEGORY	A	B	C	D
LPV DA	1147-7/8	250 (300-7/8)		NA
LNAV/VNAV DA	1190-1	293 (300-1)		NA
LNAV MDA	1360-1	463 (500-1)	1360-1 3/8 463 (500-1 3/8)	NA
<b>C</b> CIRCLING	1360-1 454 (500-1)	1500-1 594 (600-1)	1520-1 3/4 614 (700-1 3/4)	NA

EC-3, 24 MAY 2018 to 21 JUN 2018

EC-3, 24 MAY 2018 to 21 JUN 2018

WAAS CH <b>97731</b> <b>W28A</b>	APP CRS <b>283°</b>	Rwy Idg TDZE Apt Elev	<b>5006</b> <b>906</b> <b>906</b>
--	------------------------	-----------------------------	---

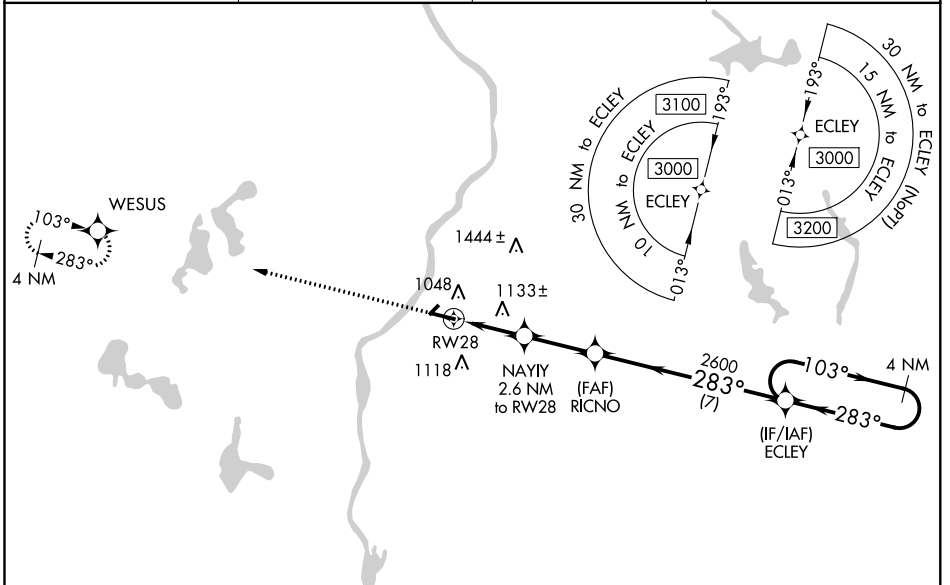
# RNAV (GPS) RWY 28

L.O. SIMENSTAD MUNI (OEO)

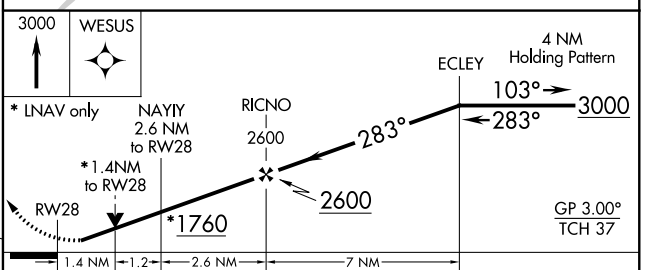
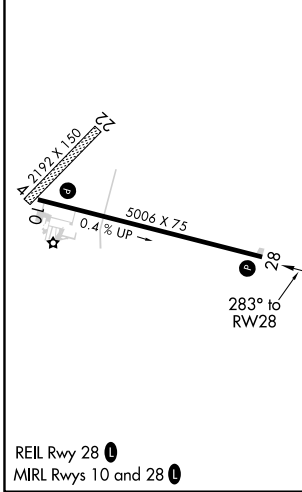
**⚠** For uncompensated Baro-VNAV systems, LNAV/VNAV NA below -1.6°C (4°F) or above 54°C (130°F).  
**⚠** DME/DME RNP-0.3 NA. VDP and Baro-VNAV NA when using Anoka County-Blaine Arpt (Jones Field) altimeter setting. Helicopter visibility reduction below 3/4 SM NA.  
 When local altimeter setting not received, use Anoka County-Blaine Arpt (Jones Field) altimeter setting and increase all DA 57 feet and all MDA 60 feet. Increase LPV all Cats visibility 1/8 mile, LNAV/VNAV all Cats, LNAV Cat C and Circling Cat C visibility 1/4 mile.

**MISSED APPROACH:**  
 Climb to 3000 direct WESUS and hold.

AWOS-3 <b>119.925</b>	MINNEAPOLIS APP CON <b>121.2 335.65</b>	GCO <b>121.725</b>	CTAF <b>122.90</b>
--------------------------	--	-----------------------	-----------------------



ELEV 906	TDZE 906
----------	----------



CATEGORY	A	B	C	D
LPV DA	1106-3/4	200 (200-3/4)		NA
LNAV/VNAV DA	1179-7/8	273 (300-7/8)		NA
LNAV MDA	1400-1	494 (500-1)	1400-1 3/8 494 (500-1 3/8)	NA
<b>C</b> CIRCLING	1400-1 494 (500-1)	1500-1 594 (600-1)	1520-1 3/4 614 (700-1 3/4)	NA

EC-3, 24 MAY 2018 to 21 JUN 2018

EC-3, 24 MAY 2018 to 21 JUN 2018