

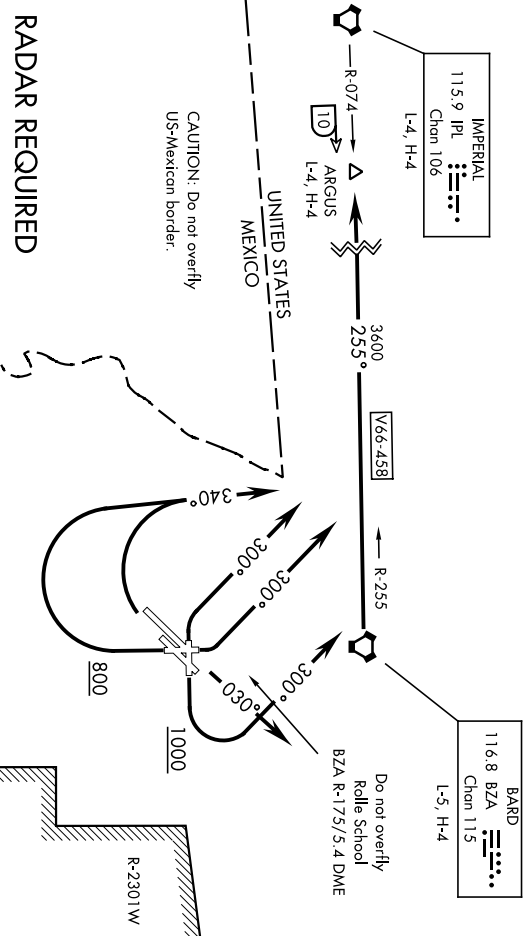
181.14

ARGUS FOUR DEPARTURE (ARGUS4•ARGUS)

YUMA MCAS/YUMA INTL (KNYL)
YUMA, ARIZONA

SHL-511 [USN]

AITS *
 118.8 273.5
 CLNC DEL
 118.0 336.4
 GND CON
 121.9 314.0
YUMA TOWER *
 119.3 377.075
 YUMA DEP CON
 125.55 282.325
 ASOS
 256.4



SW-4, 24 MAY 2018 to 21 JUN 2018

SW-4, 24 MAY 2018 to 21 JUN 2018

RADAR REQUIRED

DEPARTURE ROUTE DESCRIPTION

- ▶ **TAKE-OFF RWY 3L/R:** Climb heading 030°, then RADAR vectors to intercept BZA VORTAC R-255. Thence...
- TAKE-OFF RWY 8:** Climb heading 078° to 1000, then climbing left turn heading 300°, then RADAR vectors to intercept BZA VORTAC R-255. Thence...
- TAKE-OFF RWY 17:** Climb heading 168° to 800, then climbing right turn heading 340°, then RADAR vectors to intercept BZA VORTAC R-255. Thence...
- TAKE-OFF RWY 21L/R:** Climbing right turn heading 340°, then RADAR vectors to intercept BZA VORTAC R-255. Thence...
- TAKE-OFF RWY 26:** Climbing right turn heading 300°, then RADAR vectors to intercept BZA VORTAC R-255. Thence...
- TAKE-OFF RWY 35:** Climbing left turn heading 300°, then RADAR vectors to intercept BZA VORTAC R-255. Thence...

... via BZA R-255 to ARGUS, then via assigned route. Maintain assigned altitude.
 Expect clearance to filed altitude/flight level 10 minutes after departure.

ARGUS FOUR DEPARTURE (ARGUS4•ARGUS)

Orig 24MAY18

YUMA, ARIZONA
YUMA MCAS/YUMA INTL (KNYL)

18144

CARGO NINE DEPARTURE (CARGO9•CARGO)

YUMA MCAS/YUMA INTL (KNYL)
YUMA, ARIZONA

SHL-511 (USN)

DEPARTURE ROUTE DESCRIPTION

TAKE-OFF RWY 3L/R: Climbing left turn to intercept BZA VORTAC R-304 to CARGO.
Cross SALUD at or above 3600. Thence...

TAKE-OFF RWY 8: Climb to 1000, then climbing left turn direct BZA VORTAC. Then via
BZA R-304 to CARGO. Do not exceed 270 KIAS to 1000. Cross SALUD at or above
3600. Thence...

TAKE-OFF RWY 17: Climb to 1000, then climbing left turn direct BZA VORTAC. Then,
via BZA R-304 to CARGO. Cross SALUD at or above 3600. Thence...

TAKE-OFF RWY 21L/R, 26: Climb to 800, then climbing left turn direct BZA VORTAC.
Then via BZA R-304 to CARGO. Cross SALUD at or above 3600. Thence...

TAKE-OFF RWY 35: Climb direct BZA VORTAC, then via BZA R-304 to CARGO.
Cross BZA VORTAC at or below 14,000. Do not exceed 300 KIAS in turn at BZA
VORTAC. Cross SALUD at or above 3600. Thence...

BARD TRANSITION (CARGO9•BZA): At CARGO, turn left to intercept BZA VORTAC
R-285 to BZA.

BLTHE TRANSITION (CARGO9•BLH): At CARGO, turn right to intercept BLH VORTAC
R-175 to BLH.

IMPERIAL TRANSITION (CARGO9•IPL): At CARGO, turn left to intercept IPL VORTAC
R-050 to IPL.

Then via assigned route. Maintain assigned altitude. Expect clearance to filed altitude
10 minutes after departure.

CARGO NINE DEPARTURE (CARGO9•CARGO)

Orig 24MAY18

YUMA, ARIZONA
YUMA MCAS/YUMA INTL (KNYL)

SW-4, 24 MAY 2018 to 21 JUN 2018

SW-4, 24 MAY 2018 to 21 JUN 2018

181.14

HEEDS TWO DEPARTURE (HEEDS2•HEEDS)YUMA MCAS/YUMA INTL (KNYL)
YUMA, ARIZONA

ATIS *
118.8 273.5
CLNC DEL
118.0 336.4
GND CON
121.9 314.0

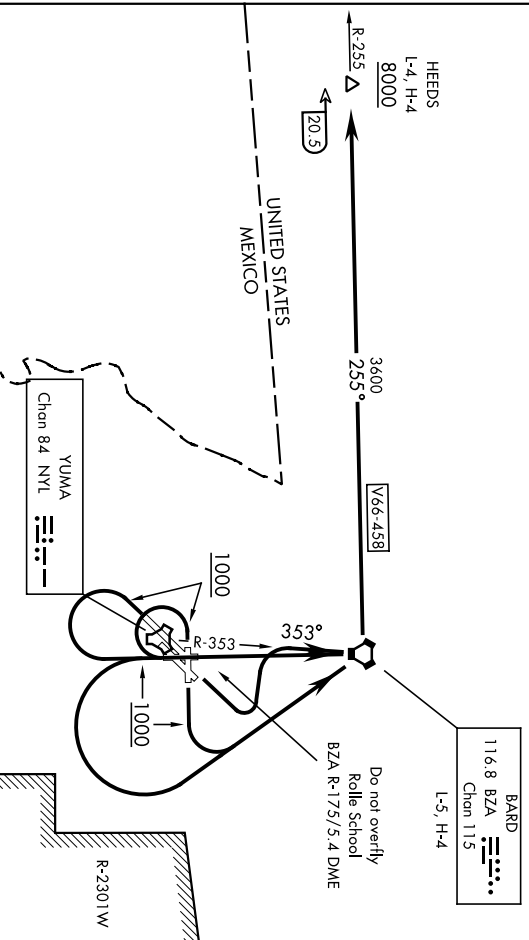
YUMA TOWER *
119.3 377.075
YUMA DEP CON
125.55 282.325
ASOS
256.4

A
26633

AICL Climb Rate to 8000

Rwy	Knots	60	120	180	240	300	360
3L/R	V/V(fpm)	313	626	939	1252	1565	1878
8, 17, 21L/R, 26	V/V(fpm)	291	582	873	1164	1455	1746
35	V/V(fpm)	328	656	984	1312	1640	1968

Runway 3L/R: Do not exceed 250 KIAS until intercepting NYL R-353. Cross BZA VORTAC at or below 9000.
Runway 8: Do not exceed 270 KIAS until 1000.
Runway 35: Cross BZA VORTAC at or below 14,000.



SW-4, 24 MAY 2018 to 21 JUN 2018

SW-4, 24 MAY 2018 to 21 JUN 2018

DEPARTURE ROUTE DESCRIPTION

TAKE-OFF RWY 3L/R: Climbing left turn to 8000 to intercept NYL TACAN R-353 to BZA VORTAC and via BZA R-255 to HEEDS. Do not exceed 250 KIAS until intercepting NYL R-353. Cross BZA VORTAC at or below 9000. Cross HEEDS at or above 8000.

TAKE-OFF RWY 8: Climb to 1000, then climbing left turn direct BZA VORTAC, then via BZA R-255 to HEEDS. Do not exceed 270 KIAS until 1000. Cross HEEDS at or above 8000.
TAKE-OFF RWY 17, 21L/R, 26: Climb to 1000, then climbing left turn direct BZA VORTAC, then via BZA R-255 to HEEDS. Cross HEEDS at or above 8000.

TAKE-OFF RWY 35: Climb to 8000 direct BZA VORTAC and via BZA R-255 to HEEDS. Cross BZA VORTAC at or below 14,000. Cross HEEDS at or above 8000.

Then via assigned route. Maintain assigned altitude. Expect clearance to filed altitude 10 minutes after departure.

HEEDS TWO DEPARTURE (HEEDS2•HEEDS)

Orig 24MAY18

YUMA, ARIZONA
YUMA MCAS/YUMA INTL (KNYL)

181.14

SHL-511 (USN)

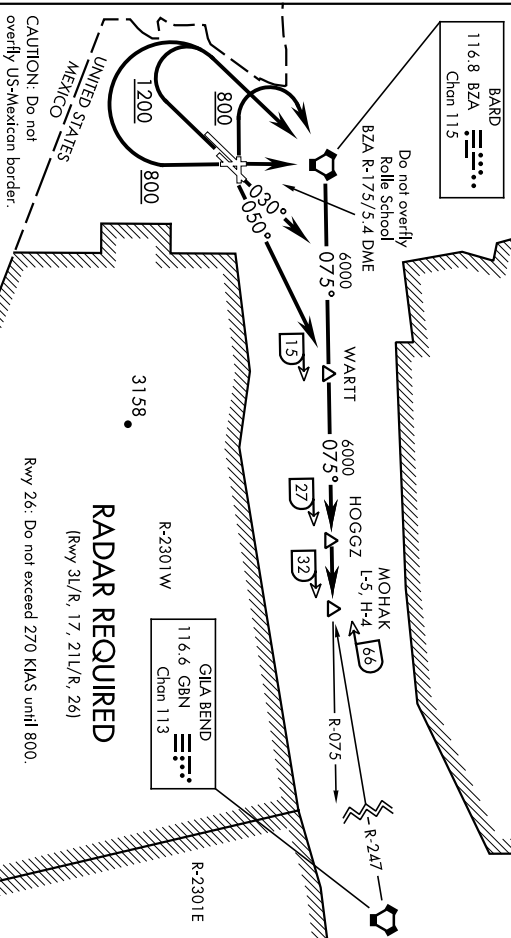
MOHAK FOUR DEPARTURE (MOHAK4•MOHAK)

YUMA MCAS/YUMA INTL (KNYL)
YUMA, ARIZONA

ATIS ★ 118.8 273.5
 CLNC DEL 118.0 336.4
 GND CON 121.9 314.0
 YUMA TOWER★ 119.3 327.075
 YUMA DEP CON 123.35 282.325
 ASOS 256.4

R-2306
 R-2307
 R-2308
 R-2309

CAUTION: Tethered Balloon
 A up to 15,000



DEPARTURE ROUTE DESCRIPTION

- TAKE-OFF RWY 3L/R:** Climb hdg 030°, then RADAR vectors to intercept BZA VORTAC R-075. Thence...
- TAKE-OFF RWY 8:** Climbing left turn hdg 050° to intercept BZA VORTAC R-075 to WARTT. Thence...
- TAKE-OFF RWY 17:** Climb to 800, then climbing right turn direct BZA VORTAC. Thence...
- TAKE-OFF RWY 21L/R:** Climb to 1200, then climbing right turn direct BZA VORTAC. Thence...
- TAKE-OFF RWY 26:** Climb to 800, then climbing right turn direct BZA VORTAC. Do not exceed 270 KIAS until 800.
- TAKE-OFF RWY 35:** Climb direct BZA VORTAC. Thence...

... via BZA R-075 to MOHAK INT via HOGGZ INT. Then via assigned route. Maintain assigned altitude. Expect clearance to filed altitude/flight level 10 minutes after departure.

MOHAK FOUR DEPARTURE (MOHAK4•MOHAK)

Orig 24MAY18

YUMA, ARIZONA
YUMA MCAS/YUMA INTL (KNYL)

SW-4, 24 MAY 2018 to 21 JUN 2018

SW-4, 24 MAY 2018 to 21 JUN 2018

