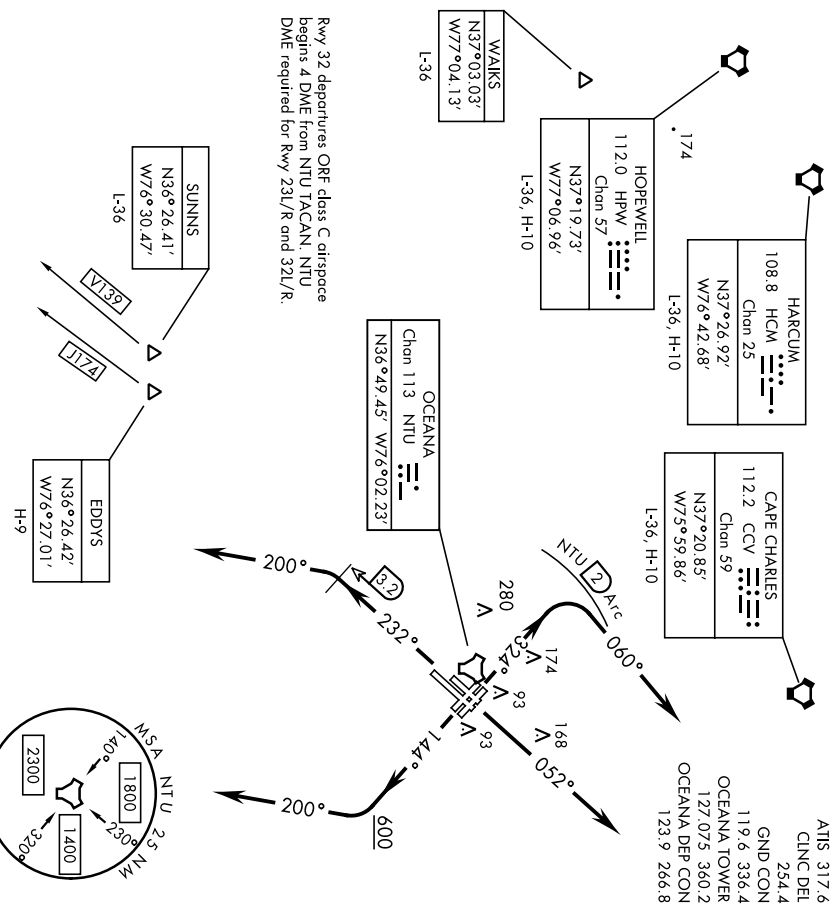


OCEANA-FOUR DEPARTURE (NTU4•NTU)

OCEANA NAS (APOLLO SOUCEK FIELD) (KNITU)
SIL-934 [USN] VIRGINIA BEACH, VIRGINIA

ATIS 317.6
CLNC DEL 254.4
GND CON 119.6 336.4
OCEANA TOWER 127.075 360.2
OCEANA DEP CON 123.9 266.8



Rwy 32L departures ORF class C airspace begins 4 DME from NTU TACAN, NTU DME required for Rwy 23L/R and 32L/R.

RADAR REQUIRED

Chart not to scale.

DEPARTURE ROUTE DESCRIPTION

- ▶ TAKE-OFF Rwy 5L/R: Climb heading 052°. Thence...
 - ▶ TAKE-OFF Rwy 14L/R: Climb heading 144° to 600 then climbing right turn heading 200°. Thence...
 - ▶ TAKE-OFF Rwy 23L/R: Climb heading 232°, crossing NTU TACAN 3.2 DME, turn left heading 200°. Thence...
 - ▶ TAKE-OFF Rwy 32L/R: Climb heading 324° to assigned altitude, turn right heading 060° within NTU TACAN 2 DME. Thence...
 - ...Maintain 4000 or assigned lower altitude.
- CAPE CHARLES TRANSITION (NTU4.CCV): Via RADAR vectors to CCV VORTAC.
 EDDYS TRANSITION (NTU4.EDDYS): Via RADAR vectors to EDDYS.
 HARCUM TRANSITION (NTU4.HCM): Via RADAR vectors to HCM VORTAC.
 HOPEWELL TRANSITION (NTU4.HPW): Via RADAR vectors to HPW VORTAC.
 (At or below 17,000 only):
 SUNNS TRANSITION (NTU4.SUNNS): Via RADAR vectors to SUNNS.
 (At or below 17,000 only):
 WAKES TRANSITION (NTU4.WAKES): Via RADAR vectors to WAKES.

OCEANA-FOUR DEPARTURE (NTU4•NTU)

Orig 03JAN19

VIRGINIA BEACH, VIRGINIA
OCEANA NAS (APOLLO SOUCEK FIELD) (KNITU)

20254

WYNNNS-THREE DEPARTURE (WYNNNS3•WYNNNS)

OCEANA NAS (APOLLO SOUCEK FIELD) (KNTU)
VIRGINIA BEACH, VIRGINIA

ATIS 317.6
CLNC DEL
254.4
GND CON 119.6 336.4
OCEANA TOWER 127.075 360.2
OCEANA DEP CON 123.9 266.8

SH-934 [USN]

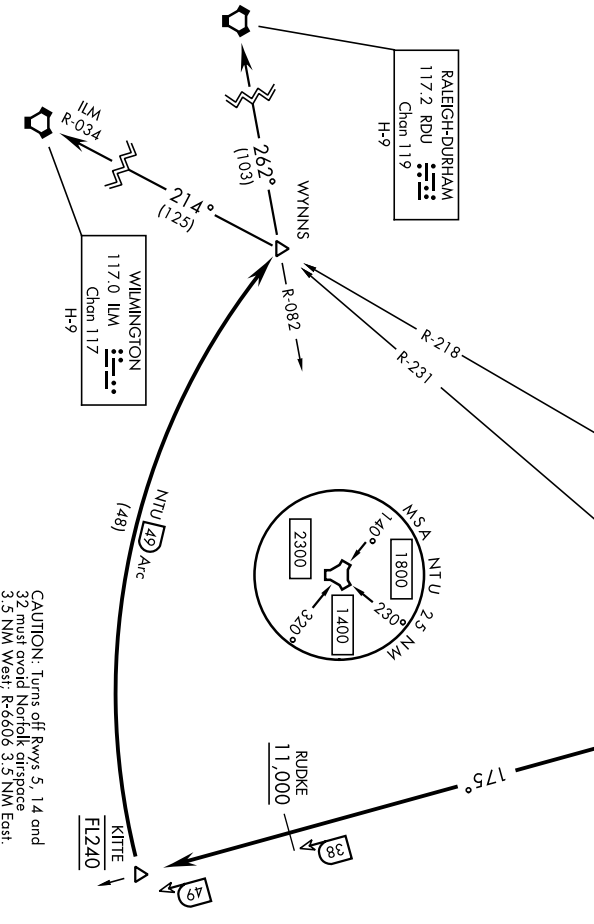
NORFOLK
116.9 ORF
Chen 116

OCEANA
Chen 113 NTU

Rwy	Knots	120	180	240	300	360
All	V/V(fpm)	1000	1500	2000	2500	3000

ATC Minimum Climb Rate to FL240

NTU TACAN REQUIRED



CAUTION: Turn off Rwy 5, 1.4 nm and 3.2 must avoid Norfolk airspace 3.5 NM West, R-6606 3.5 NM East.

DEPARTURE ROUTE DESCRIPTION

TAKE-OFF RMY 5L/R or 14L/R: Climbing right turn to intercept NTU TACAN R-175 to CANOB. Thence...

TAKE-OFF RMY 23L/R: Climbing left turn to intercept NTU TACAN R-175 to CANOB. Thence...

TAKE-OFF RMY 32L/R: Climbing left turn within NTU TACAN 2 DME to intercept NTU R-175. Thence...

... Via NTU R-175 to KITTE, arc south of NTU via the 49 mile arc to WYNNNS. Cross RUDKE at or above 11,000. Cross KITTE at FL240, or as assigned. Thence...

RALEIGH-DURHAM TRANSITION (WYNNNS3-RDU): Via RDU VORTAC R-082 to RDU.

WILMINGTON TRANSITION (WYNNNS3-ILM): Via ILM VORTAC R-034 to ILM.

WYNNNS-THREE DEPARTURE (WYNNNS3•WYNNNS)

VIRGINIA BEACH, VIRGINIA
OCEANA NAS (APOLLO SOUCEK FIELD) (KNTU)