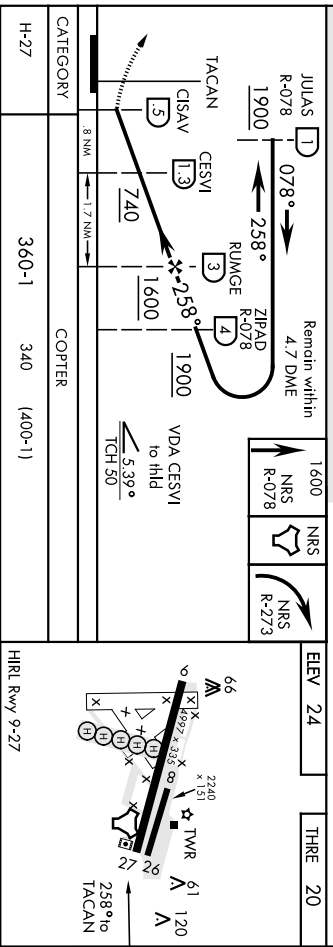
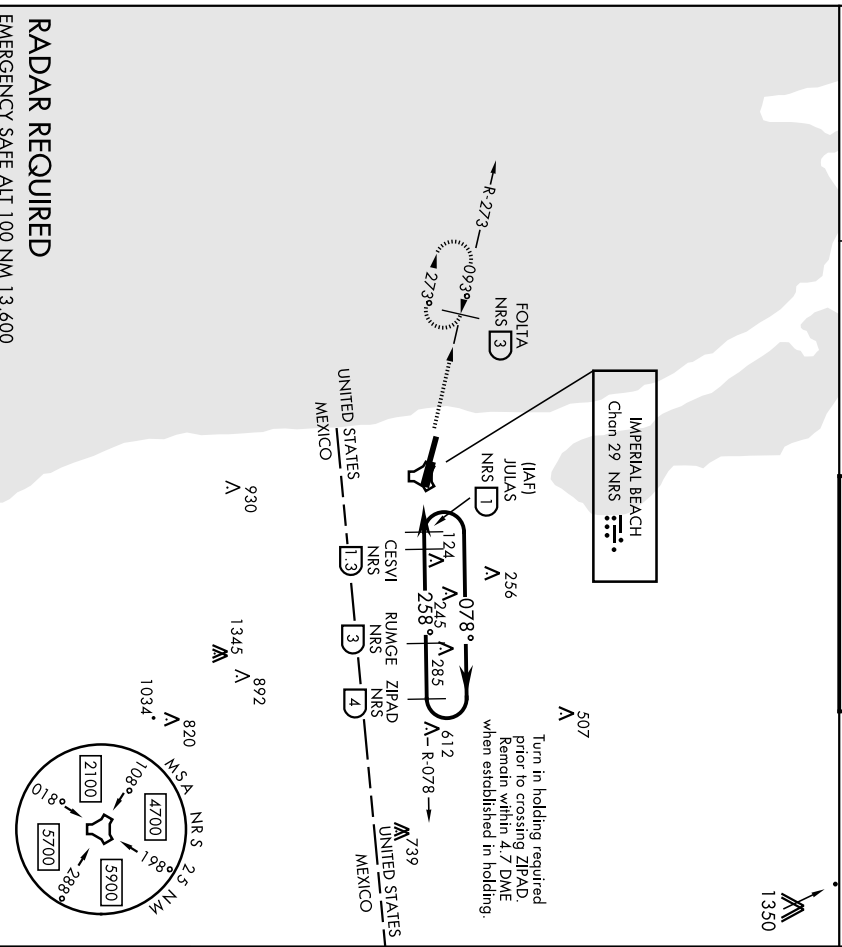


TACAN NRS Chon 29	APCH CRS 258°	Pub./Idg THRE Appl Elev 24	4997 20 24
AL-307 (USN)		IMPERIAL BEACH NOLF (REAM FIELD) (KNRS)	
Max airspeed 90 KIAS.		MISSED APPROACH: Climb to 1600 via NRS TACAN R-078 to NRS, then via NRS R-273 to FOLTA, continue climb-in-hold to 1600. Remain within 5.2 DME when established in holding.	
ATIS * /ASOS 276.2	SOCAL APP CON 125.15 317.55	IMPERIAL BEACH TOWER * 120.65 239.25	GND CON 285.575



IMPERIAL BEACH, CALIFORNIA 32°34'N-117°07'W

IMPERIAL BEACH NOLF (REAM FIELD) (KNRS)
COPTER TACAN RWY 27

COPTER 340 (400-1)

IMPERIAL BEACH, CALIFORNIA 32°34'N-117°07'W

COPTER TACAN RWY 27

Amtd 4 20AUG15