



TACAN NIP Chon 19	ARCH CRS 286°	Row/Idg TDLZ Appl Elev	9003 13 23
----------------------	------------------	------------------------------	------------------

JAN-209 (USN) JACKSONVILLE NAS (TOWERS FIELD) (KNIP)

ATIS 124.35 290.425	JACKSONVILLE ARP CON 127.775 377.075	NAVY JACKSONVILLE TOWER 125.15 (CTAF) 340.2	GND CON 128.6 336.4	CINC DEL 134.775 353.675	ASR/ PAR
------------------------	---	--	------------------------	-----------------------------	-------------

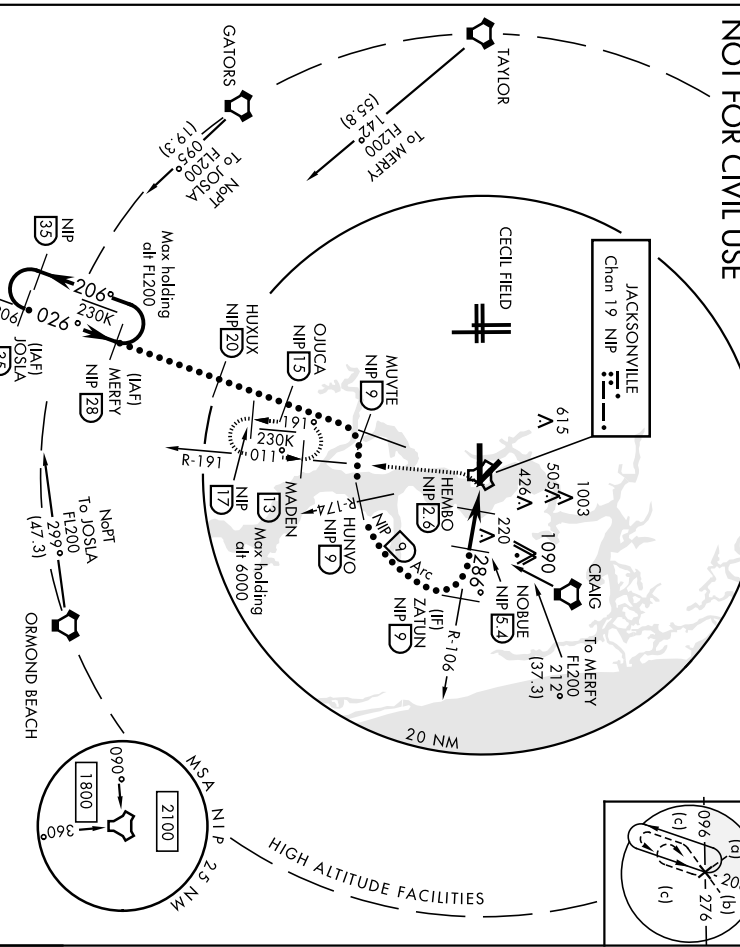
\* When AIS Inop, increase CAT CDE vis to 1 1/2 miles.



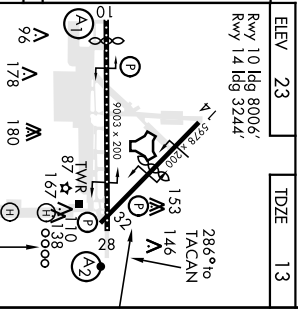
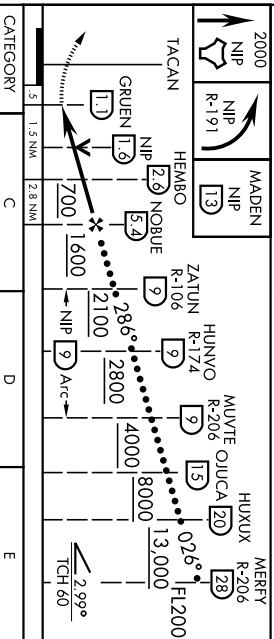
MISSED APPROACH: Climb to 2000 direct NIP TACAN and turn left outbound R-191 to MADEN and hold.

CAUTION: Inland seg len 3.6 NM

NOT FOR CIVIL USE



EMERG SAFE ALT 100 NM 2800	ELEV 23	TDZE 13
----------------------------	---------	---------



5. 1.5 NM	2.8 NM	C	D	E
S-28 *	400-7/8	387 (400-7/8)	800-2 1/2	980-3
CIRCLING	537 (600-1 1/2)	777 (800-2 1/2)	957 (1000-3)	

JACKSONVILLE, FLORIDA 30° 14' N-81° 41' W JACKSONVILLE NAS (TOWERS FIELD) (KNIP)  
Amdt 2 100CT19

HI-TACAN RWY 28

JACKSONVILLE, FLORIDA

# RNAV (RNP) Y RWY 10

APCH CRS	Rwy Idg	<b>8006</b>
<b>096°</b>	TDZE	<b>21</b>
	Arprt Elev	<b>23</b>

AL-209 (USN)

JACKSONVILLE NAS (KNIP)

▼ \* When ALS inop increase vis to 1 mile.

ALSF-1

MISSED APPROACH: Climb to 600 then climbing right turn to 2000 direct MADEN and hold.

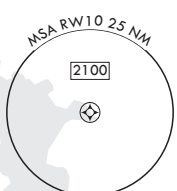
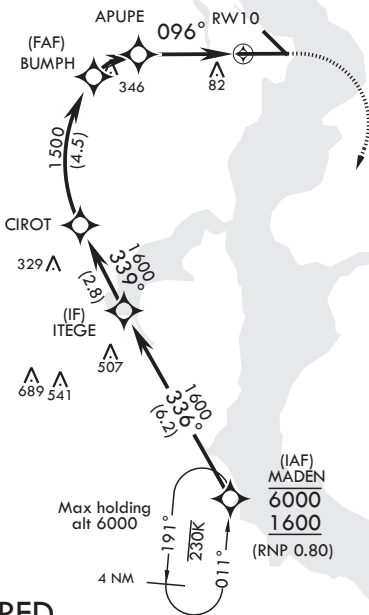


ATIS	APP CON/DEP CON	TOWER	GND CON	CLNC DEL	ASR/PAR
<b>124.35 290.425</b>	<b>127.775 377.075</b>	<b>125.15 (CTAF) 340.2</b>	<b>128.6 336.4</b>	<b>134.775 0 353.675</b>	

RNP AR APCH

For uncompensated Baro-VNAV systems, procedure NA below -1.5°C (5°F) or above 54°C (130°F).

1074  
△



**RF REQUIRED  
AUTHORIZATION REQUIRED**

306  
EMERG SAFE ALT 100 NM 2800

MADEN	ITEGE	CIROT	BUMPH	APUPE	RWY 10
6000 1600	1600	1600	1500	1027	
GP 3.00° TCH 51	336°	339°	1500	096°	
			1.5 NM	3 NM	
CATEGORY	A	B	C	D	
RNP 0.30 DA*	389-%	368	(400-%)		

600

2000

MADEN

ELEV 23

Rwy 10 Idg 8006'

Rwy 14 Idg 3244'

TDZE 21

JACKSONVILLE, FLORIDA

30°14'N - 81°41'W

JACKSONVILLE NAS (KNIP)

Amdt 1 05NOV20

# RNAV (RNP) Y RWY 10

SE-3, 28 JAN 2021 to 25 FEB 2021

SE-3, 28 JAN 2021 to 25 FEB 2021

# RNAV (RNP) Y RWY 28

APCH CRS <b>276°</b>	Rwy Idg <b>9003</b> TDZE <b>13</b> Arpt Elev <b>23</b>
-------------------------	--

AL-209 (USN)

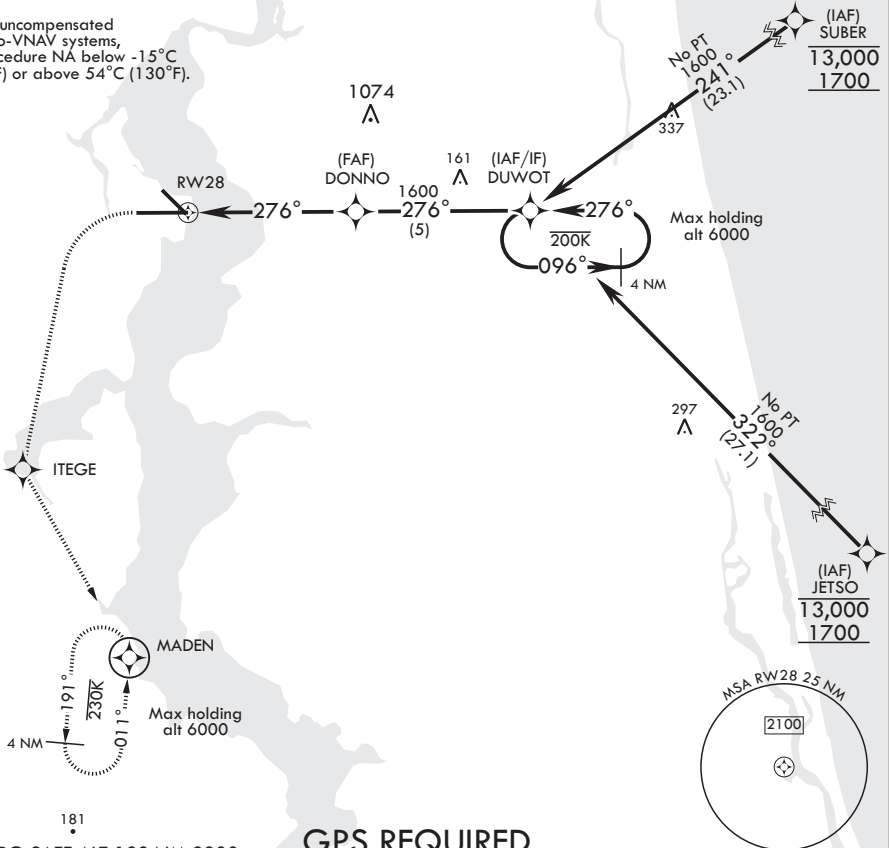
JACKSONVILLE NAS (TOWERS FLD) (KNIP)

**▽** \* When ALS inop increase CAT ABCD vis to 7/8 mile.

**SALS**  
**(A2)**  
MISSED APPROACH: Climb to 600 then climbing left turn to 2000 direct ITEGE, track 156° to MADEN and hold.

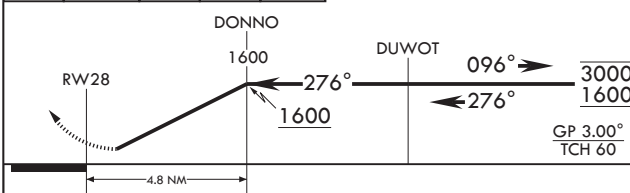
ATIS <b>124.35 290.425</b>	APP CON/DEP CON <b>127.775 377.075</b>	TOWER <b>125.15 (CTAF) 340.2</b>	GND CON <b>128.6 336.4</b>	CLNC DEL <b>134.775 0 353.675</b>	ASR/PAR
-------------------------------	---	-------------------------------------	-------------------------------	--------------------------------------	---------

For uncompensated Baro-VNAV systems, procedure NA below -15°C (5°F) or above 54°C (130°F).



EMERG SAFE ALT 100 NM 2800

**GPS REQUIRED**



ELEV 23	TDZE 13
Rwy 10 Idg 8006' Rwy 14 Idg 3244'	276° to RWY 28

Detailed diagram of RWY 28 showing taxiway layout, tower (TWR 87), beacon (BCN 167), and lead-in lights. The diagram includes various navigation aids and symbols.

CATEGORY	A	B	C	D
RNP 0.30 DA*	310-3/4	297	(300-3/4)	

HIRL Rwy 10-28  
HIRL Rwy 14-32  
REIL Rwy 32

# RNAV (RNP) Y RWY 28

SE-3, 28 JAN 2021 to 25 FEB 2021

SE-3, 28 JAN 2021 to 25 FEB 2021

JACKSONVILLE, FLORIDA

# RNAV (GPS) Z RWY 10

WAAS CH 42020 W10A	APCH CRS 096°	Rwy ldg TDZE Arpt Elev	8006 21 23
--------------------------	------------------	------------------------------	------------------

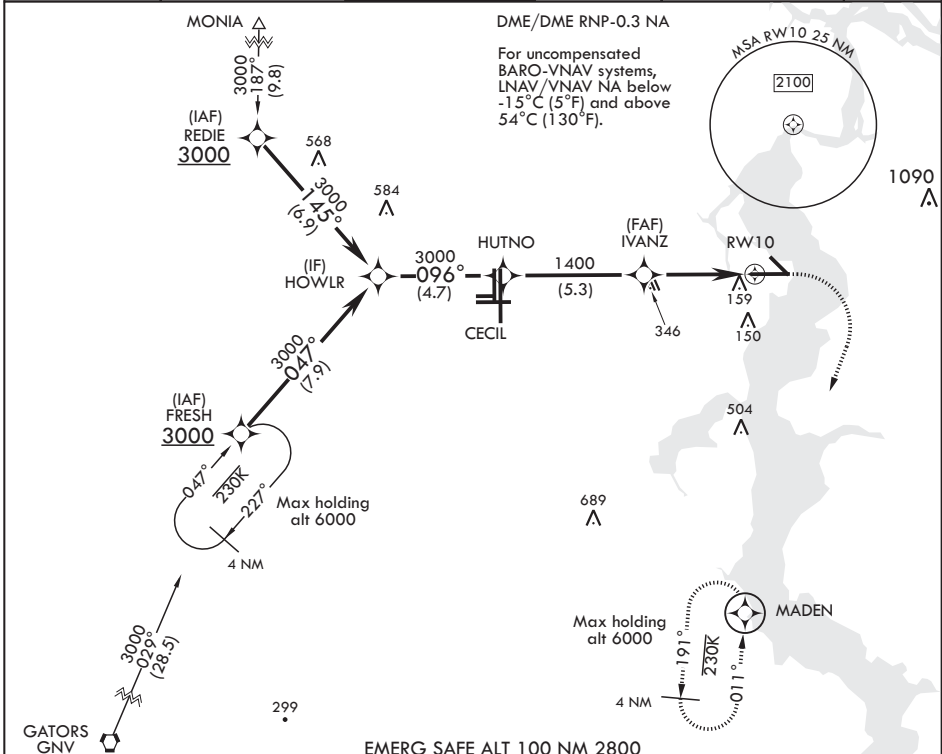
AL-209 (USN)

JACKSONVILLE NAS (TOWERS FLD) (KNIP)

\* When ALS inop increase CAT ABCD vis to 3/4 mile.  
 \*\* When ALS inop, increase CAT ABCD vis to 1 mile.  
 \*\*\* When ALS inop increase CAT AB vis to 1 mile; CAT CD vis to 1 1/8 miles.

ALSF-1  MISSED APPROACH: Climb to 600 then climbing right turn to 2000 direct MADEN and hold.

ATIS 124.35 290.425	APP CON/DEP CON 127.775 377.075	TOWER 125.15 (CTAF) 340.2	GND CON 128.6 336.4	CLNC DEL 134.775 0 353.675	ASR/PAR
------------------------	------------------------------------	------------------------------	------------------------	-------------------------------	---------



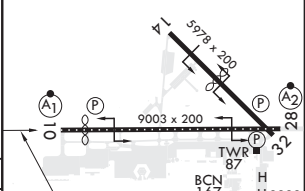
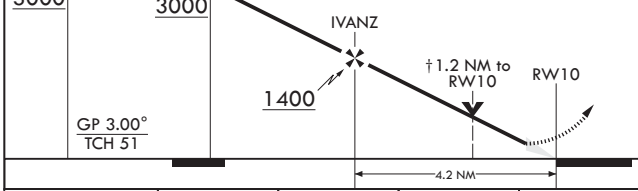
SE-3, 28 JAN 2021 to 25 FEB 2021

SE-3, 28 JAN 2021 to 25 FEB 2021

EMERG SAFE ALT 100 NM 2800

HOWLR 3000	HUTNO 3000	† LNAV only	600	2000	MADEN	ELEV 23	TDZE 21
------------	------------	-------------	-----	------	-------	---------	---------

Rwy 10 ldg 8006'  
Rwy 14 ldg 3244'



CATEGORY	A	B	C	D
LPV DA*	221-1/2	200	(200-1/2)	
LNAV/VNAV DA**	387-5/8	366	(400-5/8)	
LNAV MDA***	440-1/2	419 (500-1/2)	440-3/4	419 (500-3/4)
CIRCLING	500-1	477 (500-1)	560-1 1/2 537 (600-1 1/2)	800-2 1/2 777 (800-2 1/2)

HIRL Rwy 10-28  
 HIRL Rwy 14-32  
 REIL Rwy 32

JACKSONVILLE, FLORIDA

30°14'N - 81°41'W

JACKSONVILLE NAS (TOWERS FLD) (KNIP)

Orig 10OCT19

# RNAV (GPS) Z RWY 10

JACKSONVILLE, FLORIDA

# RNAV (GPS) Z RWY 28

WAAS CH 46924 W28A	APCH CRS 276°	Rwy ldg 9003 TDZE 13 Arpt Elev 23
--------------------------	------------------	---

AL-209 (USN)

JACKSONVILLE NAS (TOWERS FLD) (KNIP)

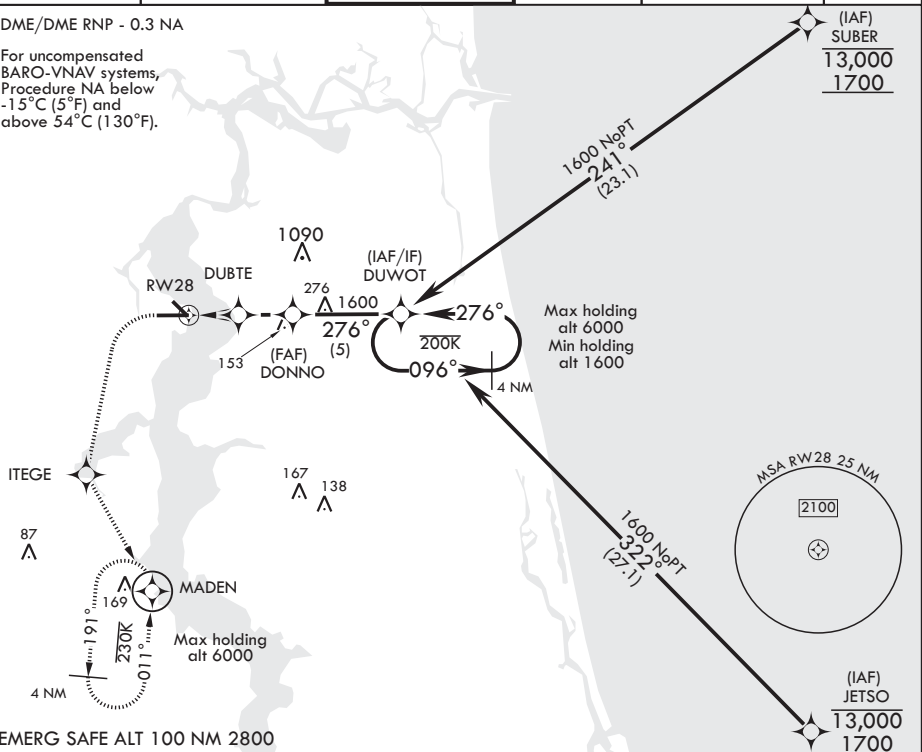
**▼** \* When ALS inop, increase CAT ABCD to 7/8 mile.  
 \*\* When ALS inop, increase CAT AB vis to 1 mile, CAT CD vis to 1 1/8 miles.

**SALS**  MISSED APPROACH: Climb to 600 then climbing left turn to 2000 direct ITEGE, track 156° to MADEN and hold.

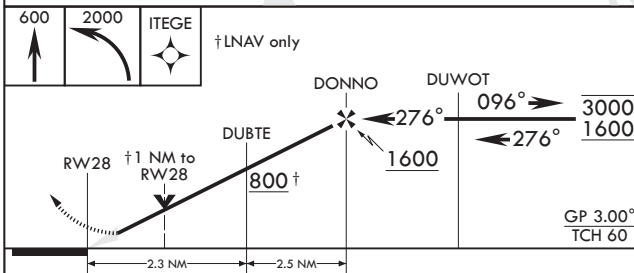
ATIS <b>124.35 290.425</b>	APP CON/DEP CON <b>127.775 377.075</b>	TOWER <b>125.15 (CTAF) 340.2</b>	GND CON <b>128.6 336.4</b>	CLNC DEL <b>134.775 0 353.675</b>	ASR/PAR
-------------------------------	---	-------------------------------------	-------------------------------	--------------------------------------	---------

DME/DME RNP - 0.3 NA

For uncompensated BARO-VNAV systems, Procedure NA below -15°C (5°F) and above 54°C (130°F).

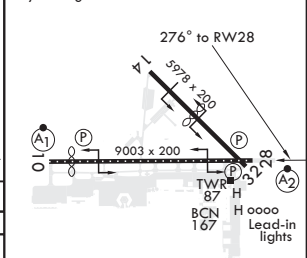


EMERG SAFE ALT 100 NM 2800



ELEV 23	TDZE 13
---------	---------

Rwy 10 ldg 8006'  
Rwy 14 ldg 3244'



CATEGORY	A	B	C	D
LPV DA	213-3/4	200	(200-3/4)	
LNAV/VNAV DA*	280-3/4 267 (300-3/4)	291-3/4 278 (300-3/4)	299-3/4 286 (300-3/4)	310-3/4 297 (300-3/4)
LNAV MDA**	400-3/4 387 (400-3/4)	420-3/8 387 (400-3/8)	560-1 1/2 537 (600-1 1/2)	800-2 1/2 777 (800-2 1/2)
<b>C</b> CIRCLING	500-1 477 (500-1)			

HIRL Rwy 10-28 0  
HIRL Rwy 14-32  
REIL Rwy 32

JACKSONVILLE, FLORIDA

30°14'N - 81°41'W

JACKSONVILLE NAS (TOWERS FLD) (KNIP)

Orig 10OCT19

# RNAV (GPS) Z RWY 28

SE-3, 28 JAN 2021 to 25 FEB 2021

SE-3, 28 JAN 2021 to 25 FEB 2021



