

AWDAD ONE ARRIVAL
(AWDAD.AWDAD1) 07DECI7

NEW ORLEANS APP CON
125.5 350.35 (WEST)
133.15 290.3 (EAST)
MSY D-ATIS
127.55
NEW ATIS
124.9



ARRIVAL ROUTE DESCRIPTION

FIGHTING TIGER TRANSITION (LSU.AWDAD1): From over LSU VORTAC on LSU R-135 to AWDAD INT.

LAFAYETTE TRANSITION (LFT.AWDAD1): From over LFT VOTRAC on LFT R-092 and RQR R-273 to AWDAD INT.

LAKE CHARLES TRANSITION (LCH.AWDAD1): From over LCH VORTAC on LCH R-080 and LFT R-264 to LFT VORTAC then on LFT R-092 and RQR R-273 to AWDAD INT.

From over AWDAD INT on RQR VOR/DME R-273 to VOODO INT.

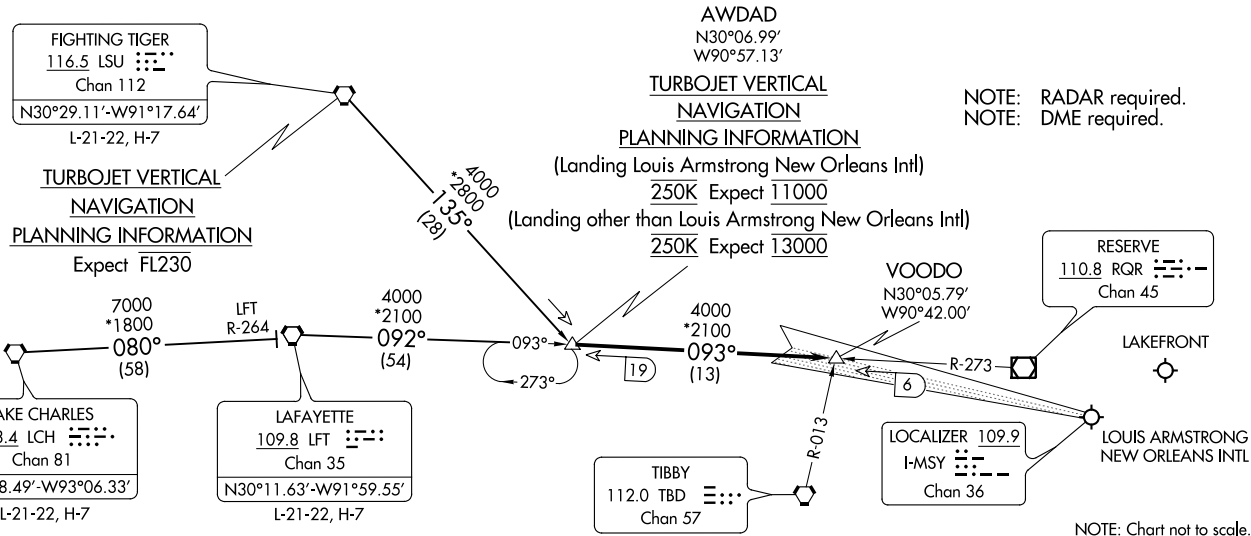
LANDING KMSY RWY 11: Intercept I-MSY localizer and expect clearance for ILS RWY 11 approach.

LANDING OTHER: Expect vectors to final approach course.

AWDAD.AWDAD1) 20198
AWDAD ONE ARRIVAL

A-609 (FAA)

NEW ORLEANS, LOUISIANA



NOTE: Chart not to scale.

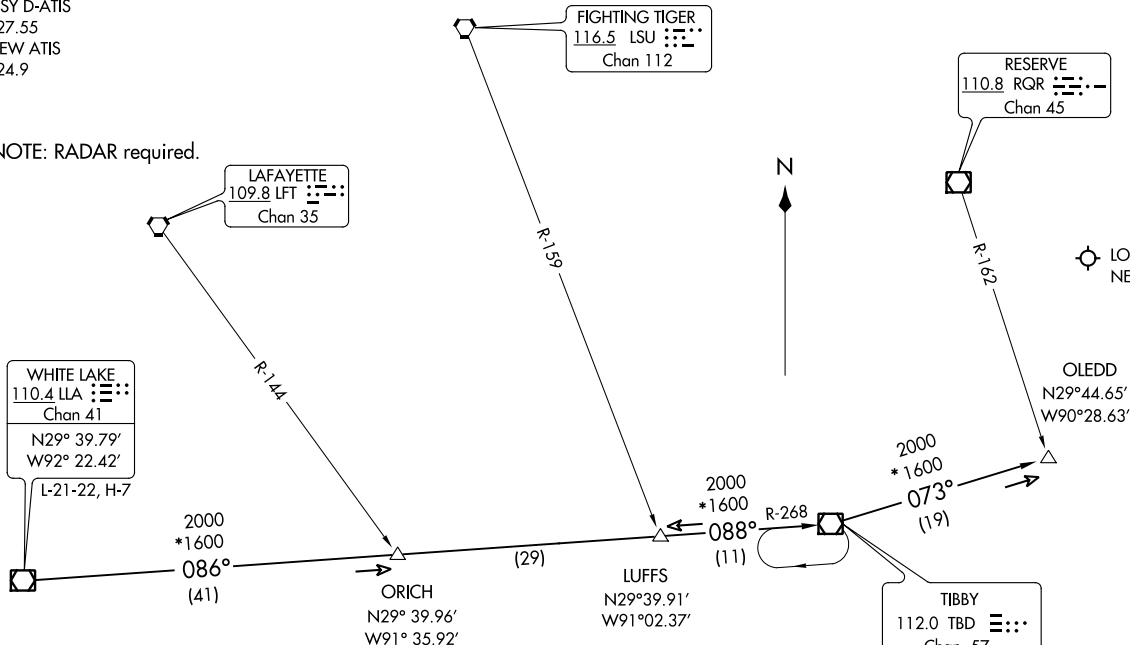
NEW ORLEANS, LOUISIANA

OLEDD FOUR ARRIVAL
(OLEDD,OLEDD4) 10NOV16

NEW ORLEANS, LOUISIANA

NEW ORLEANS APP CON
125.5 350.35
MSY D-ATIS
127.55
NEW ATIS
124.9

NOTE: RADAR required.



ARRIVAL ROUTE DESCRIPTION

TIBBY TRANSITION (TBD,OLEDD4): From over TBD VOR/DME on TBD R-073 to OLEDD INT. Thence. . . .

WHITE LAKE TRANSITION (LLA,OLEDD4): From over LLA VOR/DME on LLA R-086 to LUFFS INT, then R-268 to TBD VOR/DME, then on TBD R-073 to OLEDD INT. Thence. . . .

. . . .expect RADAR vectors to final approach course.

TURBOJET VERTICAL NAVIGATION
PLANNING INFORMATION

Expect 11000

NOTE: Chart not to scale.

(OLEDD,OLEDD4) 20198
OLEDD FOUR ARRIVAL

AL-609 (FAA)

NEW ORLEANS, LOUISIANA

RYTHM FOUR ARRIVAL

NEW ORLEANS, LOUISIANA

NEW ORLEANS APP CON
 133.15 290.3
 125.5 350.35
 MSY D-ATIS
 127.55
 NEW ATIS
 124.9

MERIDIAN
 117.0 MEI
 Chan 117
 N32°22.71'-W88°48.26'
 L-18, H-6

NATCHEZ
 110.0 HEZ
 Chan 37
 N31°37.09'-W91°17.98'
 L-22, H-6

MC COMB
 116.7 MCB
 Chan 114
 N31°18.27'-W90°15.49'
 L-21-22, H-6

BLEUZ
 N31°40.14'
 W89°29.35'

EATON
 110.6 LBY
 Chan 43
 N31°25.12'
 W89°20.26'
 L-22, H-6

5000
 *1900
 125°
 (70)

2000
 173
 (125)

5000
 *1900
 125°
 (69)

ZYCO
 N30°53.26'
 W90°13.65'

FOILS
 N30°41.26'
 W90°12.77'

RYTHM
 N30°32.41'-W90°12.13'
TURBOJET VERTICAL NAVIGATION
PLANNING INFORMATION
 250K Expect 11000

OYSTY
 N30°28.25'
 W90°11.82'

PICAYUNE
 114.15 PCU
 Chan 88 (Y)

NOTE: DME required.
 NOTE: RADAR required.

RESERVE
 110.8 RQR
 Chan 45

RAYOP
 N30°12.82'
 W90°10.70'

LOCALIZER 111.7
 I-ONW
 Chan 54

LAKEFRONT

LOUIS ARMSTRONG
 NEW ORLEANS INTL

NOTE: Chart not to scale.

(NARRATIVE ON FOLLOWING PAGE)

RYTHM FOUR ARRIVAL

NEW ORLEANS, LOUISIANA

SC-4, 17 JUN 2021 to 15 JUL 2021

SC-4, 17 JUN 2021 to 15 JUL 2021

ARRIVAL ROUTE DESCRIPTION

EATON TRANSITION (LBY.RYTHM4): From over LBY VORTAC via LBY R-216 to RYTHM INT. Thence. . . .

MC COMB TRANSITION (MCB.RYTHM4): From over MCB VORTAC via MCB R-173 to RYTHM INT. Thence. . . .

MERIDIAN TRANSITION (MEI.RYTHM4): From over MEI VORTAC via MEI R-215 to ZYDCO INT then via MCB R-173 to RYTHM INT. Thence. . . .

NATCHEZ TRANSITION (HEZ.RYTHM4): From over HEZ VOR/DME via HEZ R-125 to ZYDCO INT then via MCB R-173 to RYTHM INT. Thence. . . .

. . . .from over RYTHM INT via MCB R-173 to RAYOP INT. Thence. . . .

LANDING LOUIS ARMSTRONG RWY 20: Intercept I-ONW localizer course and expect clearance for LOC Rwy 20 approach.

LANDING OTHER RUNWAYS: Expect vectors to final approach course.

SC-4, 17 JUN 2021 to 15 JUL 2021

SC-4, 17 JUN 2021 to 15 JUL 2021

SLIDD TWO ARRIVAL
(SLIDD.SLIDD2) 06NOV97

NEW ORLEANS APP CON
125.5 350.35 (LOUIS ARMSTRONG)
133.15 290.3 (LAKEFRONT NORTH)
123.85 256.9 (LAKEFRONT SOUTH)
MSY D-ATIS
127.55
NEW ATIS
124.9

PICAYUNE
114.15 PCU
Chan 88 (Y)

RESERVE
110.8 RQR
Chan 45

LOUIS ARMSTRONG
NEW ORLEANS INTL

LAKEFRONT

TURBOJET VERTICAL NAVIGATION
PLANNING INFORMATION

Expect clearance to cross at 11,000'

SLIDD
N30° 09.77'
W89° 44.04'

CLERY
N30° 16.55'
W89° 25.87'

MUDDA
N30° 19.70'
W89° 17.37'

GREENE COUNTY
115.7 GCV
Chan 104

BUGLE
N30° 36.76'
W88° 36.94'

SEMMESS
115.3 SJI
Chan 100
N30°43.56' -W88°21.56'
L-21-22, H-6-7-8

GULFPORT
109.0 GPT
Chan 27
N30° 24.41' -W89° 04.61'
L-21-22



SC-4, 17 JUN 2021 to 15 JUL 2021

GULFPORT TRANSITION (GPT.SLIDD2): From over GPT VOR/DME via GPT R-245 to SLIDD INT. Thence. . . .
SEMMESS TRANSITION (SJI.SLIDD2): From over SJI VORTAC via SJI R-238 to GPT VOR/DME, then via GPT R-245 to SLIDD INT. Thence. . . .
. . . .expect vectors to final approach course.

NOTE: Chart not to scale.

SC-4, 17 JUN 2021 to 15 JUL 2021

(SLIDD.SLIDD2) 20254
SLIDD TWO ARRIVAL

AL-609 (FAA)

NEW ORLEANS, LOUISIANA