

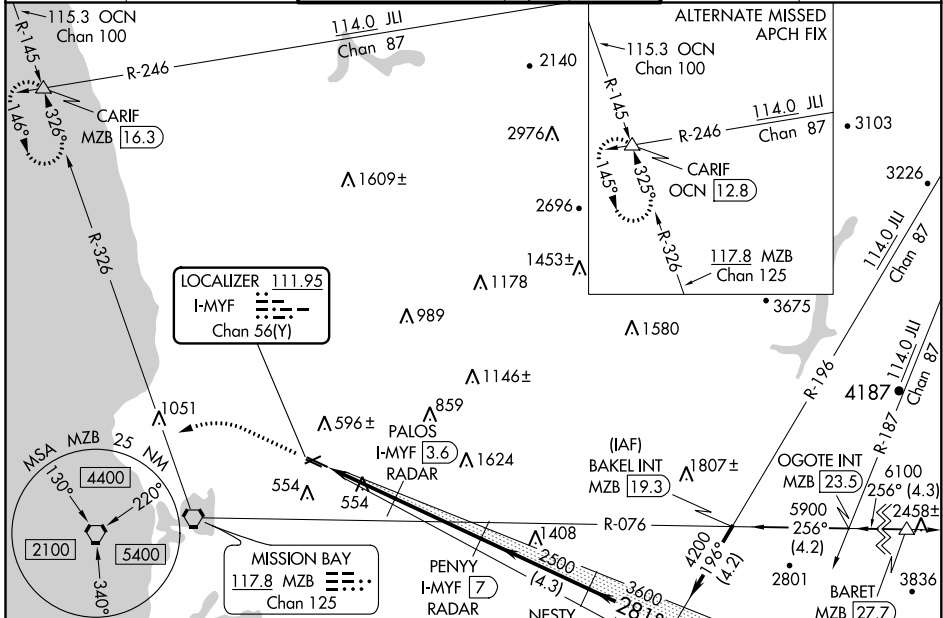
LOC/DME I-MYF 111.95 Chan 56(Y)	APP CRS 281°	Rwy Idg TDZE 423 Apt Elev 427
---	------------------------	--

ILS or LOC RWY 28R

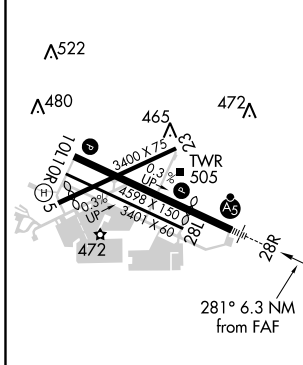
MONTGOMERY-GIBBS EXEC (MYF)

DME or RADAR required.		MALSR 	MISSED APPROACH: Climb to 1100 then climbing left turn to 3000 on heading 270° and MZB VORTAC R-326 to CARIF INT/MZB 16.3 DME and hold.
Circling Rwy 10L, 23, 28L NA at night. Rwy 28R helicopter visibility reduction below 3/4 SM NA. Inop table does not apply to S-ILS all Cats. For inop ALS, increase S-LOC 28R all Cats visibility to 1 SM.			

ATIS 126.9	SOCAL APP CON 124.35 279.625	MONTGOMERY TOWER ★ 119.2 (CTAF) 0 269.4 (Rwys 5, 10L/R, 23, 28L) 125.7 269.4 (Rwy 28R)	GND CON 118.225	CLNC DEL 123.725
----------------------	--	---	---------------------------	----------------------------



ELEV 427	TDZE 423
----------	----------



REIL Rwy 28L
MIRL Rwy 10L-28R

FAF to MAP 6.3 NM

Knots	60	90	120	150	180
Min:Sec	6:18	4:12	3:09	2:31	2:06

1100	3000	MZB R-326	CARIF	MIBBY INT I-MYF 14.5																				
↑	hdg 270°			JJI 29.6 RADAR																				
* LOC only																								
I-MYF 0.7	* I-MYF 1.8	PALOS I-MYF 3.6 RADAR	PENNY I-MYF 7 RADAR	NESTY I-MYF 11.2 RADAR																				
1.1 NM	1.8 NM	3.4 NM	4.3 NM	3.3 NM																				
<table border="1"> <thead> <tr> <th>CATEGORY</th> <th>A</th> <th>B</th> <th>C</th> <th>D</th> </tr> </thead> <tbody> <tr> <td>S-ILS 28R</td> <td>673-3/4</td> <td>250 (300-3/4)</td> <td></td> <td>NA</td> </tr> <tr> <td>S-LOC 28R</td> <td>820-3/4</td> <td>397 (400-3/4)</td> <td></td> <td>NA</td> </tr> <tr> <td>CIRCLING</td> <td>920-1</td> <td>493 (500-1)</td> <td></td> <td>NA</td> </tr> </tbody> </table>					CATEGORY	A	B	C	D	S-ILS 28R	673-3/4	250 (300-3/4)		NA	S-LOC 28R	820-3/4	397 (400-3/4)		NA	CIRCLING	920-1	493 (500-1)		NA
CATEGORY	A	B	C	D																				
S-ILS 28R	673-3/4	250 (300-3/4)		NA																				
S-LOC 28R	820-3/4	397 (400-3/4)		NA																				
CIRCLING	920-1	493 (500-1)		NA																				

SW-3, 11 AUG 2022 to 08 SEP 2022

SW-3, 11 AUG 2022 to 08 SEP 2022

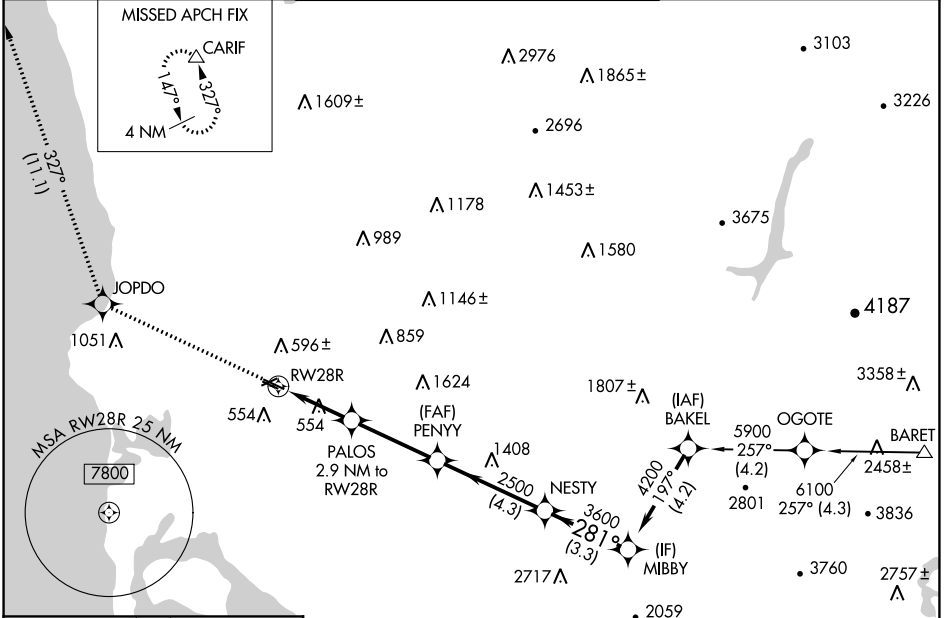
WAAS CH 45710 W28A	APP CRS 281°	Rwy Idg TDZE Apt Elev	3399 423 427
--	------------------------	-----------------------------	---

RNAV (GPS) RWY 28R

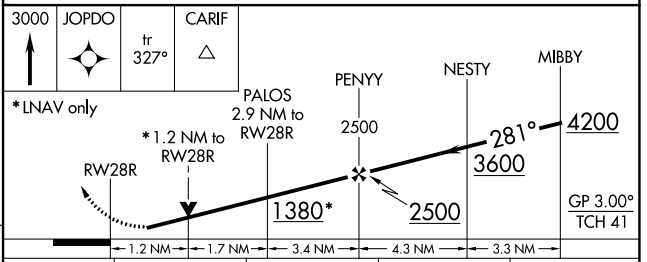
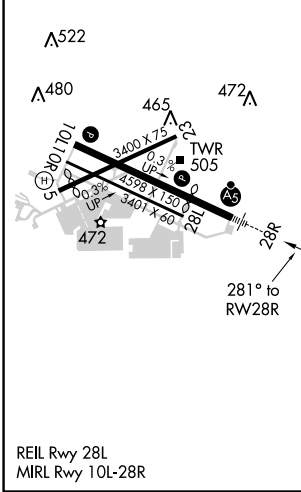
MONTGOMERY-GIBBS EXEC (M.Y.F.)

RNP APCH.		MALSR	MISSED APPROACH: Climb to 3000 direct JOPDO and on track 327° to CARIF and hold.
▼ Rwy 28R helicopter visibility reduction below ¾ SM NA. ▲ For uncompensated Baro-VNAV systems, LNAV/VNAV NA below -15°C or above 54°C.			

ATIS 126.9	SOCAL APP CON 124.35 279.625	MONTGOMERY TOWER ★ 119.2 (CTAF) 0 269.4 (Rwys 5, 10L/R, 23, 28L) 125.7 269.4 (Rwy 28R)	GND CON 118.225	CLNC DEL 123.725
----------------------	--	---	---------------------------	----------------------------



ELEV 427	TDZE 423
-----------------	-----------------



CATEGORY	A	B	C	D
LPV DA	673-¾	250 (300-¾)		NA
LNAV/VNAV DA	750-¾	327 (400-¾)		NA
LNAV MDA	840-¾	417 (500-¾)		NA
CIRCLING	920-1	493 (500-1)		NA

SW-3, 11 AUG 2022 to 08 SEP 2022

SW-3, 11 AUG 2022 to 08 SEP 2022