

DANEI TWO ARRIVAL  
(DANEI.DANEI2) 23NOV06

(DANEI.DANEI2) 16259  
DANEI TWO ARRIVAL

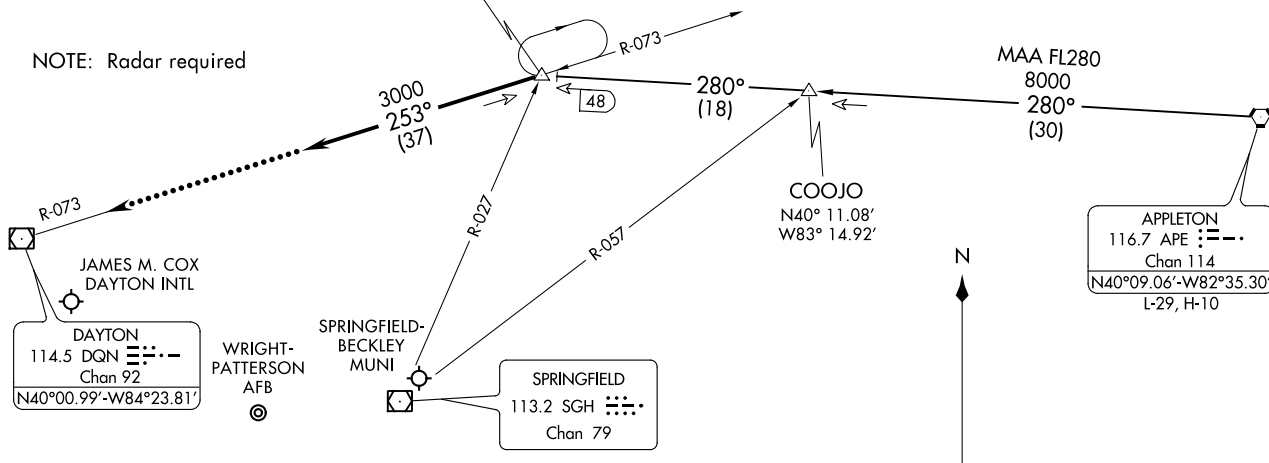
ST-107 (FAA)

DAYTON, OHIO

DAYTON APP CON  
118.425 323.15  
JAMES M COX ATIS 125.8

DANEI  
N40°12.16'-W83°38.36'  
VERTICAL NAVIGATION PLANNING  
All aircraft expect clearance to cross  
at 11,000' and 250 KTS

NOTE: Radar required



JAMES M. COX  
DAYTON INTL

DAYTON  
114.5 DQN Chan 92  
N40°00.99'-W84°23.81'

WRIGHT-  
PATTERSON  
AFB

SPRINGFIELD-  
BECKLEY  
MUNI

SPRINGFIELD  
113.2 SGH Chan 79

APPLETON  
116.7 APE Chan 114  
N40°09.06'-W82°35.30'  
L-29, H-10

DAYTON-  
WRIGHT BROTHERS

MIDDLETOWN RGNL  
HOOK FIELD

APPLETON TRANSITION (APE.DANEI2): From over APE VORTAC via APE R-280 to DANEI INT. Thence . . . .

. . . . From over DANEI INT via heading 253°. Expect radar vectors to final approach course.

LOST COMMUNICATIONS:

In the event of lost communications: At DANEI INT, proceed direct DQN VOR/DME maintain 3000 feet until DQN VOR/DME.

NOTE: Chart not to scale.

DAYTON, OHIO