

RNAV (GPS)-A

MORRISVILLE-STOWE STATE (MVL)

APP CRS	Rwy Idg	N/A
051°	TDZE	N/A
	Apt Elev	733

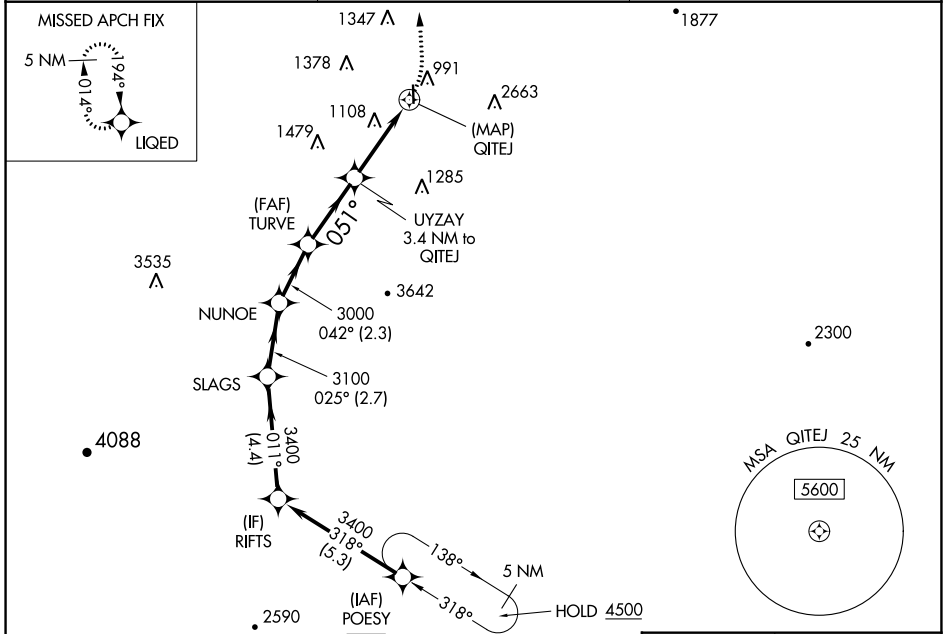
RNP APCH.

⚠ Circling NA for Cat C east of Rwy 1-19. When local altimeter setting not received, use Burlington altimeter setting and increase all MDAs 120 feet.

⚠ -30°C

MISSED APPROACH: Climbing left turn to 5600 direct LIQED and hold, continue climb-in-hold to 5600.

ASOS 135.625	BOSTON CENTER 135.7 282.2	UNICOM 122.8 (CTAF) 📻
------------------------	-------------------------------------	--



Procedure NA for arrival on MPV VOR/DME airway radials 317 CW 037.

MONTPELIER MPV

ELEV	733
------	-----

REIL Rwy 1 and 19 **📻**
HIRL Rwy 1-19 **📻**

RIFTS	SLAGS	NUNOE	TURVE	UYZAY	LIQED
3400	3400	3100	3000	3.4 NM to QITEJ	📍
4.4 NM	2.7 NM	2.3 NM	2.9 NM	3.4 NM	

CATEGORY	A	B	C	D
📻 CIRCLING	1620-1¼ 887 (900-1¼)	1780-1½ 1047 (1100-1½)	1980-3 1247 (1300-3)	NA

NE-1, 13 AUG 2020 to 10 SEP 2020

NE-1, 13 AUG 2020 to 10 SEP 2020

WAAS CH 72731 W19A	APP CRS 194°	Rwy Idg TDZE 733 Apt Elev 733	3700
--	------------------------	---	-------------

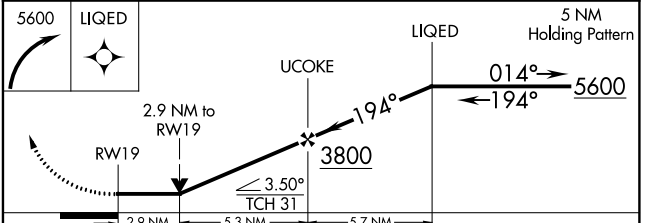
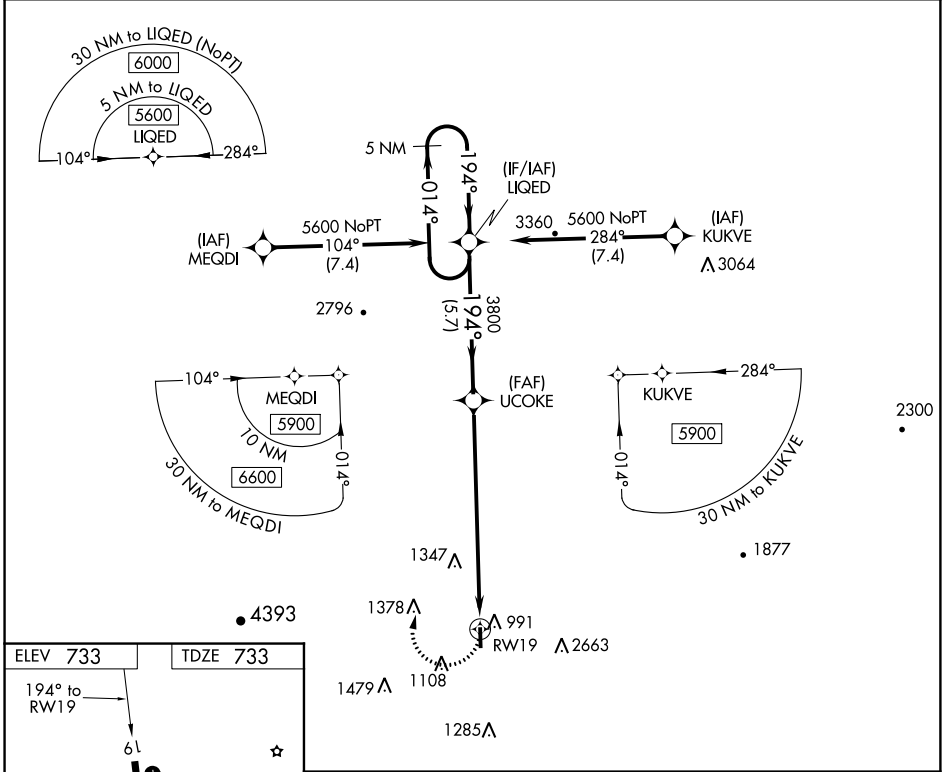
RNAV (GPS) Y RWY 19

MORRISVILLE-STOWE STATE (MVL)

⚠ Circling NA for Cat C E of Rwy 1-19. Rwy 19 helicopter visibility reduction below 3/4 SM NA. DME/DME RNP-0.3 NA. VDP NA when using Burlington altimeter setting. When local altimeter setting not received, use Burlington altimeter setting and increase all MDAs 120 feet.

⚠ MISSED APPROACH: (Do not exceed 165K until LIQED) Climbing right turn to 5600 direct LIQED and hold, continue climb-in-hold to 5600.

ASOS 135.625	BOSTON CENTER 135.7 282.2	UNICOM 122.8 (CTAF) 0
------------------------	-------------------------------------	---------------------------------



CATEGORY	A	B	C	D
LP MDA	1860-1/4 1127 (1200-1/4)	1860-1/2 1127 (1200-1/2)	1860-3 1127 (1200-3)	NA
LNAV MDA	2160-1/4 1427 (1500-1/4)	2160-1/2 1427 (1500-1/2)	2160-3 1427 (1500-3)	NA
C CIRCLING	2160-1/4 1427 (1500-1/4)	2160-1/2 1427 (1500-1/2)	2160-3 1427 (1500-3)	NA

NE-1, 13 AUG 2020 to 10 SEP 2020

NE-1, 13 AUG 2020 to 10 SEP 2020

WAAS CH 97531 W19B	APP CRS 194°	Rwy Idg TDZE Apt Elev	3700 733 733
--	------------------------	-----------------------------	---

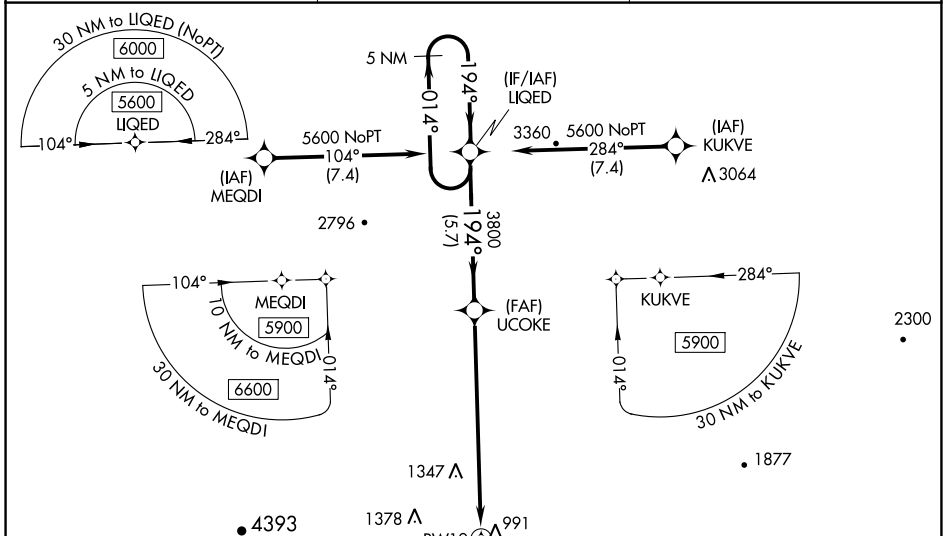
RNAV (GPS) Z RWY 19

MORRISVILLE-STOWE STATE (MVL)

⚠ For uncompensated Baro-VNAV systems, LNAV/VNAV NA below -28°C (-18°F) or above 54°C (130°F). Circling NA for Cat C E of Rwy 1-19. Baro-VNAV and VDP NA when using Burlington altimeter setting. Rwy 19 helicopter visibility reduction below 3/4 SM NA. DME/DME RNP-0.3 NA. When local altimeter setting not received, use Burlington altimeter setting: increase LPV DA to 1380 feet and all visibilities 3/4 SM; increase LNAV/VNAV DA to 1690 feet; increase all MDAs 120 feet.

MISSED APPROACH: (Do not exceed 165K until LIQED) Climb to 2200 then climbing right turn to 5600 direct LIQED and hold, continue climb-in-hold to 5600. Missed approach requires minimum climb of 325 feet per NM to 3000; if unable to meet climb gradient, see RNAV (GPS) Y Rwy 19.

ASOS 135.625	BOSTON CENTER 135.7 282.2	UNICOM 122.8 (CTAF) 0
------------------------	-------------------------------------	---------------------------------



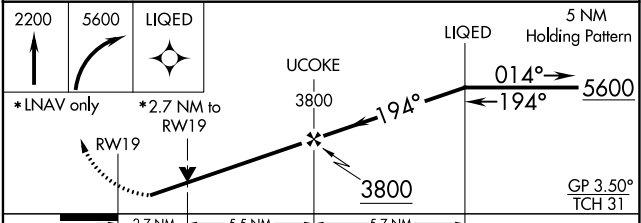
ELEV 733	TDZE 733
----------	----------

194° to RWY 19

61

3700 X 75

0.3% UP



CATEGORY	A	B	C	D
LPV DA	1270-1½	537 (600-1½)		NA
LNAV/VNAV DA	1580-3	847 (900-3)		NA
LNAV MDA	1760-1¼ 1027 (1100-1¼)	1760-1½ 1027 (1100-1½)	1760-3 1027 (1100-3)	NA
C CIRCLING	1760-1¼ 1027 (1100-1¼)	1780-1½ 1047 (1100-1½)	1980-3 1247 (1300-3)	NA

NE-1, 13 AUG 2020 to 10 SEP 2020

NE-1, 13 AUG 2020 to 10 SEP 2020