

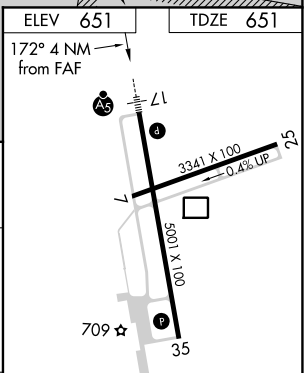
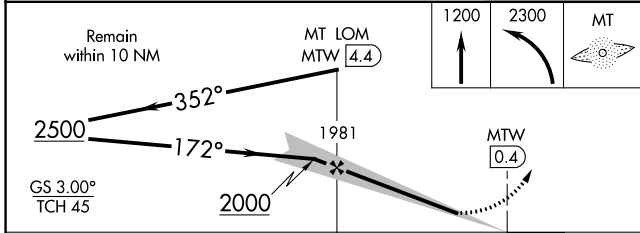
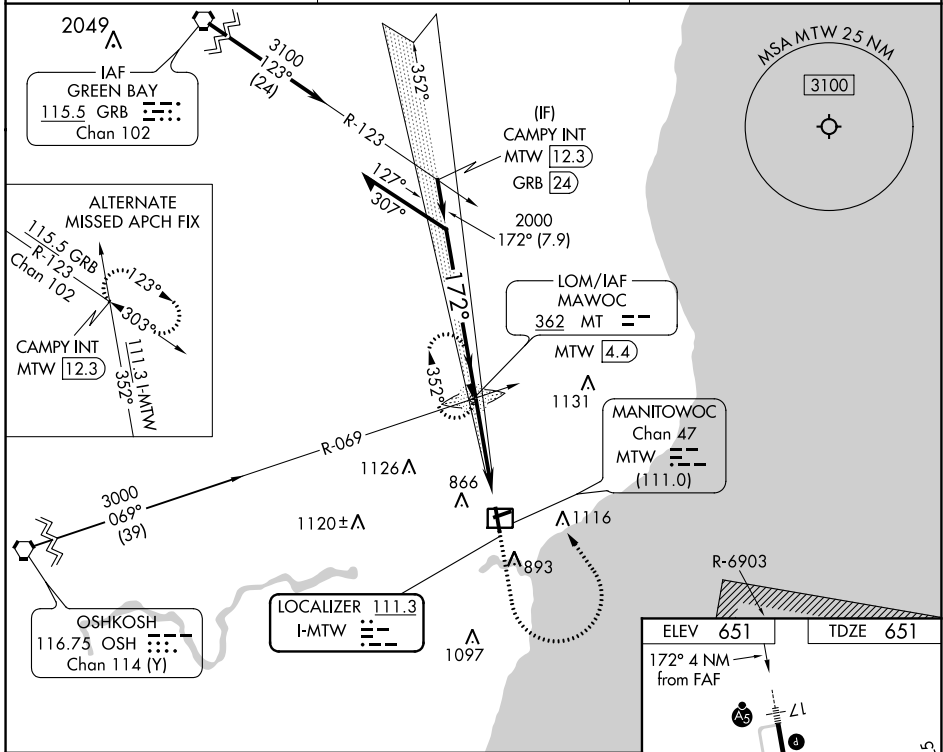
LOC I-MTW 111.3	APP CRS 172°	Rwy ldg TDZE Apt Elev	5001 651 651
---------------------------	------------------------	-----------------------------	---

ILS or LOC RWY 17

MANITOWOC COUNTY (MTW)

ADF required.	MALSR	MISSED APPROACH: Climb to 1200 then climbing left turn to 2300 direct MAWOC LOM and hold.
For inop ALS, increase S-LOC 17 Cat C/D visibility to 1 3/8 SM.		

AWOS-3PT 123.775	GREEN BAY APP CON* 120.2 338.2	UNICOM 122.8 (CTAF)
----------------------------	--	-------------------------------



CATEGORY	A	B	C	D	REIL Rwy 35 MIRL Rwy 7-25 HIRL Rwy 17-35 FAF to MAP 4 NM Knots 60 90 120 150 180 Min:Sec 4:00 2:40 2:00 1:36 1:20
S-ILS 17	851-1/2 200 (200-1/2)				
S-LOC 17	1160-1/2	509 (600-1/2)	1160-1	509 (600-1)	
CIRCLING	1200-1	549 (600-1)	1420-2 1/4 769 (800-2 1/4)	1480-2 3/4 829 (900-2 3/4)	

EC-3, 17 JUN 2021 to 15 JUL 2021

EC-3, 17 JUN 2021 to 15 JUL 2021

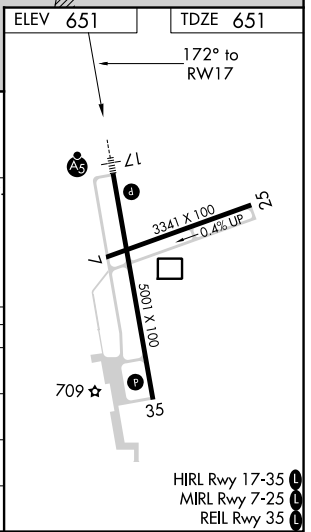
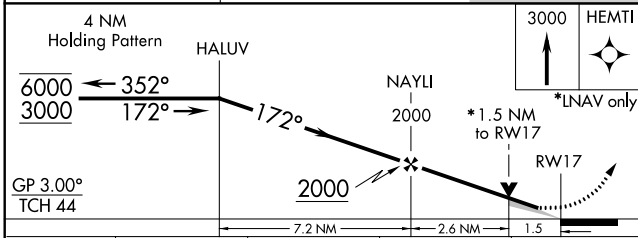
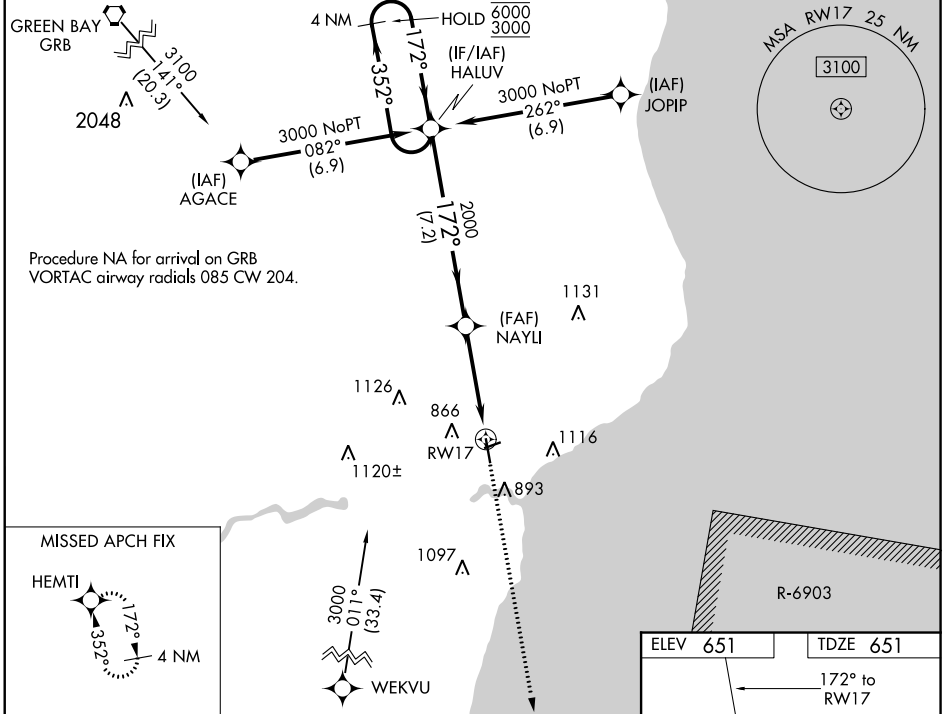
WAAS CH 63111 W17A	APP CRS 172°	Rwy Idg TDZE Apt Elev	5001 651 651
--	------------------------	-----------------------------	---

RNAV (GPS) RWY 17

MANITOWOC COUNTY (MTW)

RNP APCH.	<p>▼ For uncompensated Baro-VNAV systems, LNAV/VNAV NA below -16°C or above 54°C. For inop ALS, increase LNAV/VNAV all Cats visibility to 7/8 SM.</p>	<p>MALSR</p>	<p>MISSED APPROACH: Climb to 3000 direct HEMTI and hold.</p>
-----------	---	--------------	--

AWOS-3PT 123.775	GREEN BAY APP CON * 120.2 338.2	UNICOM 122.8 (CTAF)
----------------------------	---	-------------------------------



CATEGORY	A	B	C	D
LPV DA		851-1/2	200 (200-1/2)	
LNAV/VNAV DA		942-1/2	291 (300-1/2)	
LNAV MDA	1180-1/2	529 (600-1/2)	1180-1	529 (600-1)
C CIRCLING	1200-1	549 (600-1)	1420-2 1/4 769 (800-2 1/4)	1480-2 3/4 829 (900-2 3/4)

EC-3, 17 JUN 2021 to 15 JUL 2021

EC-3, 17 JUN 2021 to 15 JUL 2021

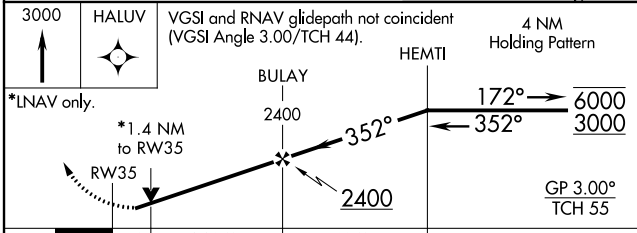
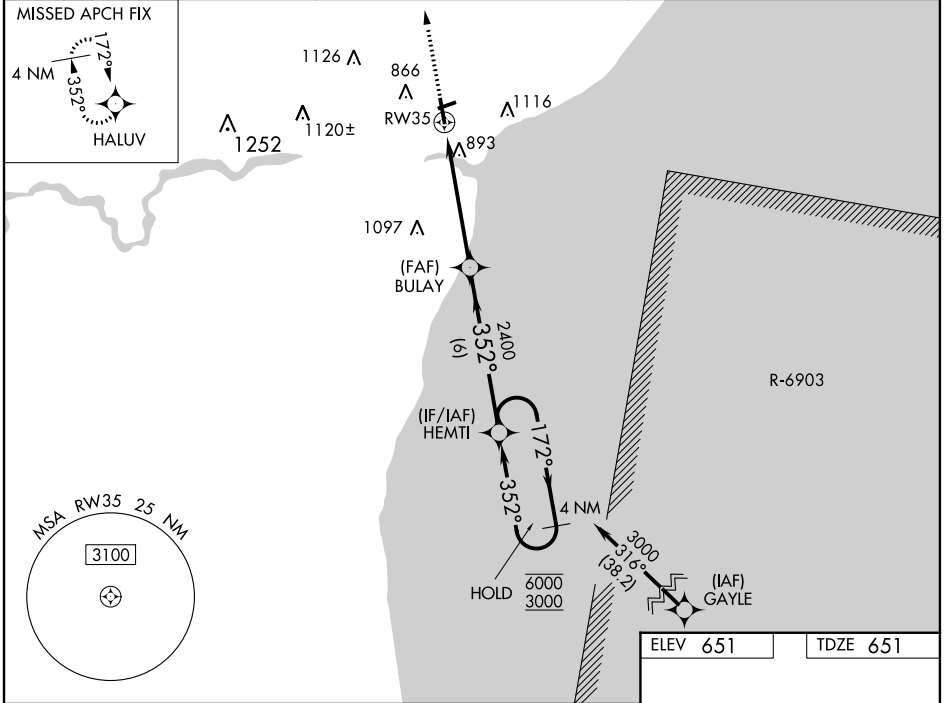
WAAS CH 82611 W35A	APP CRS 352°	Rwy Idg TDZE Apt Elev	5001 651 651
--	------------------------	-----------------------------	---

RNAV (GPS) RWY 35

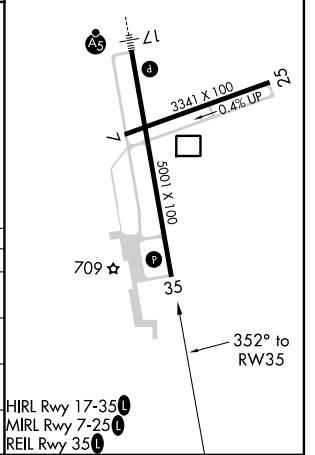
MANITOWOC COUNTY (MTW)

RNP APCH.	MISSED APPROACH: Climb to 3000 direct HALUV and hold.
-----------	---

AWOS-3PT 123.775	GREEN BAY APP CON★ 120.2 338.2	UNICOM 122.8 (CTAF) L
----------------------------	--	---------------------------------



ELEV 651	TDZE 651
----------	----------



CATEGORY	A	B	C	D
LPV DA		957-7/8	306 (400-7%)	
LNAV/VNAV DA		1199-15/8	548 (600-1%)	
LNAV MDA	1160-1	509 (600-1)	1160-13/8	509 (600-13%)
C CIRCLING	1200-1	549 (600-1)	1420-2 1/4 769 (800-2 1/4)	1480-2 3/4 829 (900-2 3/4)

- HIRL Rwy 17-35 L
- MIRL Rwy 7-25 L
- REIL Rwy 35 L

EC-3, 17 JUN 2021 to 15 JUL 2021

EC-3, 17 JUN 2021 to 15 JUL 2021