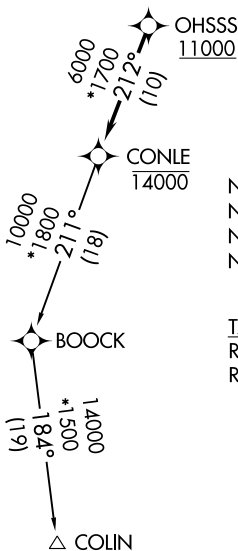


CONLE THREE DEPARTURE (RNAV)

ATIS
 124.925
 CLNC DEL
 121.8 (when twr closed)
 GND CON
 121.8 253.4
 MARTIN TOWER *
 121.3 (CTAF) 254.425
 UNICOM
 122.95
 POTOMAC DEP CON
 119.7 290.47

**TOP ALTITUDE:
ASSIGNED BY ATC**



NOTE: RNAV 1.
 NOTE: DME/DME/IRU or GPS required.
 NOTE: RADAR required.
 NOTE: Turbojets only.

TAKEOFF MINIMUMS:

Rwy 15: Standard.
 Rwy 33: Standard with minimum climb of 215' per NM to 1700.

TAKEOFF OBSTACLES:

- Rwy 15: Trees 625' from DER, 184' right of centerline, up to 20' AGL/29' MSL.
 Pole and trees beginning 1689' from DER, 580' left of centerline, up to 89' AGL/97' MSL.
 Trees beginning 2582' from DER, 68' right of centerline, up to 92' AGL/103' MSL.
 Trees beginning 2906' from DER, 550' left of centerline, up to 100' AGL/109' MSL.
- Rwy 33: Terrain 91' from DER, 482' right of centerline, 0' AGL/25' MSL.
 Poles and trees beginning 1170' from DER, 3' left of centerline, up to 84' AGL/133' MSL.
 Poles and trees beginning 1175' from DER, 10' right of centerline, up to 79' AGL/128' MSL.
 Trees beginning 3108' from DER, 8' left of centerline, up to 86' AGL/145' MSL.
 Trees beginning 2843' from DER, 14' right of centerline, up to 96' AGL/175' MSL.

NOTE: Chart not to scale.

DEPARTURE ROUTE DESCRIPTION

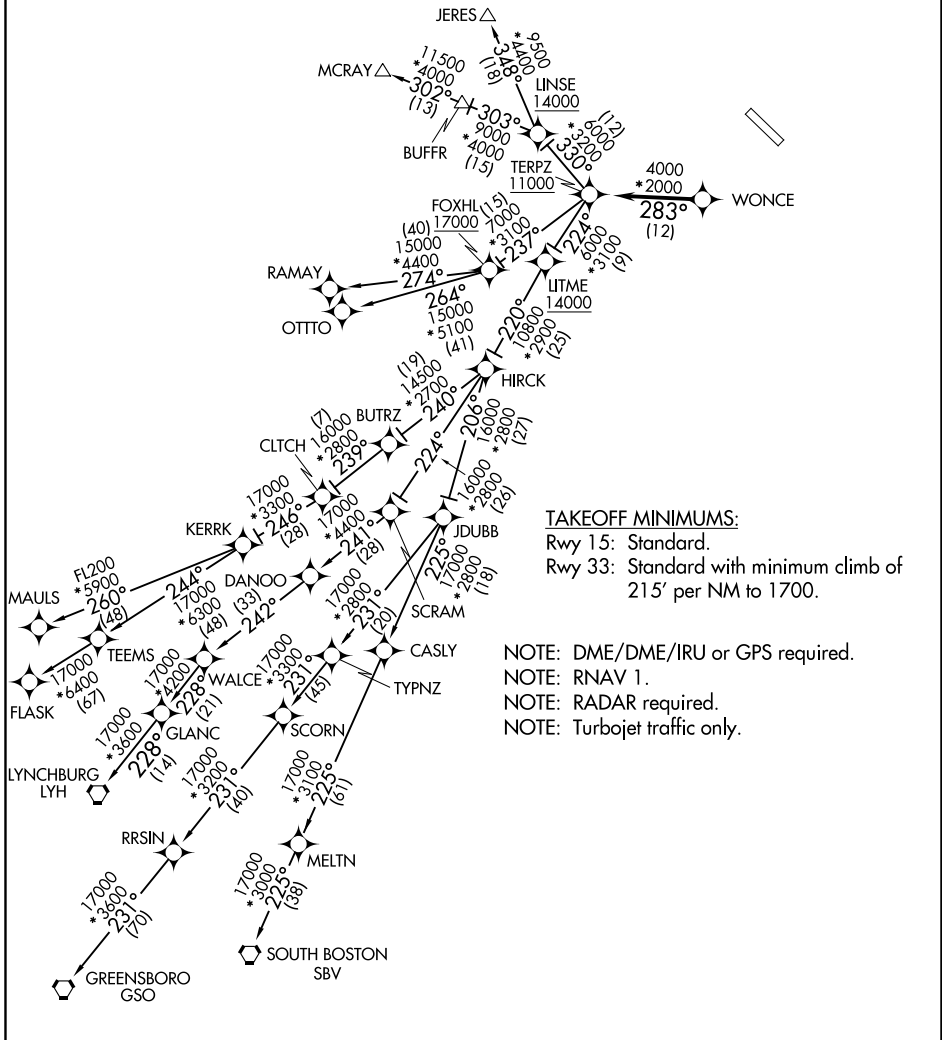
Fly heading and maintain altitude assigned by ATC, expect RADAR vectors to cross OHSSS at or above 11000, then on track 212° to cross CONLE at or below 14000, then on COLIN transition. Expect filed altitude within 10 minutes after departure.

COLIN TRANSITION (CONLE3.COLIN)

TERPZ SIX DEPARTURE (RNAV)

ATIS
 124.925
 CLNC DEL
 121.8 (when twr closed)
 GND CON
 121.8 253.4
 MARTIN TOWER ★
 121.3 (CTAF) 254.425
 UNICOM
 122.95
 POTOMAC DEP CON
 119.7

TOP ALTITUDE:
RAMAY, OTTTO, MAULS, FLASK,
SBV, LYH, GSO TRANSITIONS:
17000
JERES, MCRAY TRANSITIONS:
16000



TAKEOFF MINIMUMS:
 Rwy 15: Standard.
 Rwy 33: Standard with minimum climb of 215' per NM to 1700.

NOTE: DME/DME/IRU or GPS required.
 NOTE: RNAV 1.
 NOTE: RADAR required.
 NOTE: Turbojet traffic only.

NOTE: Chart not to scale.

NE-3, 21 JUN 2018 to 19 JUL 2018

NE-3, 21 JUN 2018 to 19 JUL 2018

TERPZ SIX DEPARTURE (RNAV)

TERPZ SIX DEPARTURE (RNAV)



DEPARTURE ROUTE DESCRIPTION

Fly heading and maintain altitude assigned by ATC, expect RADAR vectors to WONCE, then on track 283° to cross TERPZ at or above 11000, thence. . . .
 . . . on assigned transition: Departures on JERES and MCRA Y transitions maintain 16000. Departures on RAMAY, OTTTO, MAULS, FLASK, LYH, GSO, SBV transitions maintain 17000, expect further clearance to filed altitude within 10 minutes after departure.

- FLASK TRANSITION (TERPZ6.FLASK):
- GREENSBORO TRANSITION (TERPZ6.GSO):
- JERES TRANSITION (TERPZ6.JERES):
- LYNCHBURG TRANSITION (TERPZ6.LYH):
- MAULS TRANSITION (TERPZ6.MAULS):
- MCRA Y TRANSITION (TERPZ6.MCRA Y):
- OTTTO TRANSITION (TERPZ6.OTTTO):
- RAMAY TRANSITION (TERPZ6.RAMAY):
- SOUTH BOSTON TRANSITION (TERPZ6.SBV):

TAKEOFF OBSTACLES:

- Rwy 15: Trees 625' from DER, 184' right of centerline, up to 20' AGL/29' MSL.
 Pole and trees beginning 1689' from DER, 580' left of centerline, up to 89' AGL/97' MSL.
 Trees beginning 2568' from DER, 68' right of centerline, up to 92' AGL/103' MSL.
 Trees beginning 2906' from DER, 550' left of centerline, up to 100' AGL/109' MSL.
- Rwy 33: Terrain 91' from DER, 482' right of centerline, 0' AGL/25' MSL.
 Poles and trees beginning 1170' from DER, 3' left of centerline, up to 84' AGL/133' MSL.
 Poles and trees beginning 1175' from DER, 10' right of centerline, up to 79' AGL/128' MSL.
 Trees beginning 3108' from DER, 8' left of centerline, up to 86' AGL/145' MSL.
 Trees beginning 2843' from DER, 14' right of centerline, up to 96' AGL/175' MSL.

NE-3, 21 JUN 2018 to 19 JUL 2018

NE-3, 21 JUN 2018 to 19 JUL 2018