

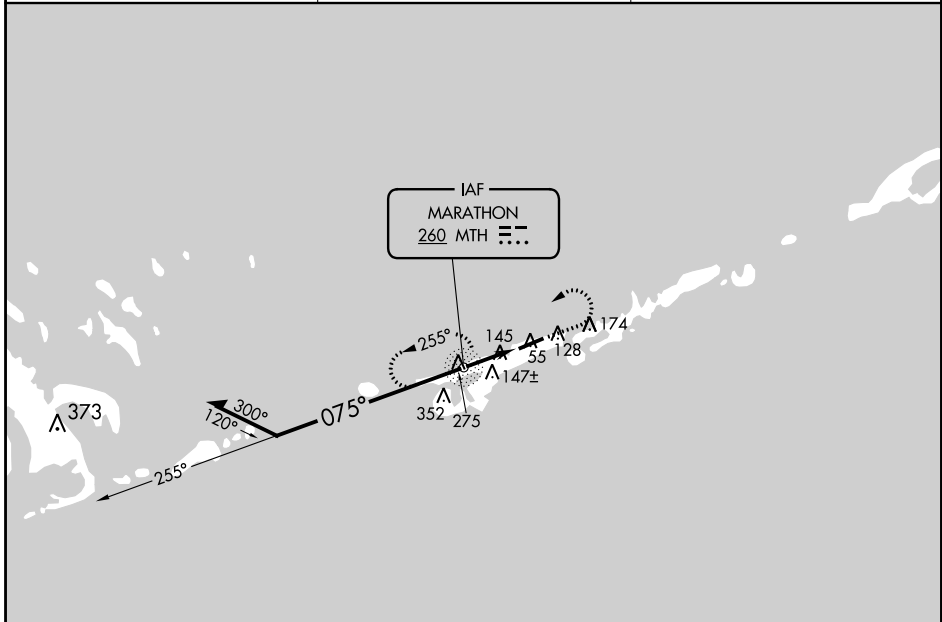
NDB MTH 260	APP CRS 075°	Rwy Idg TDZE Apt Elev	N/A N/A 5
-----------------------	------------------------	-----------------------------	--------------------------------------

NDB-A

THE FLORIDA KEYS MARATHON INTL (MTH)

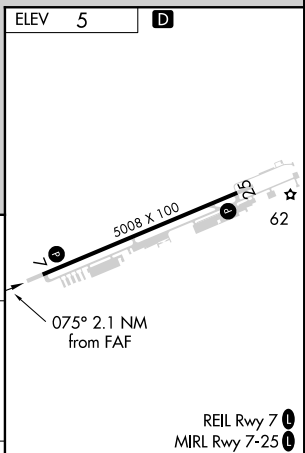
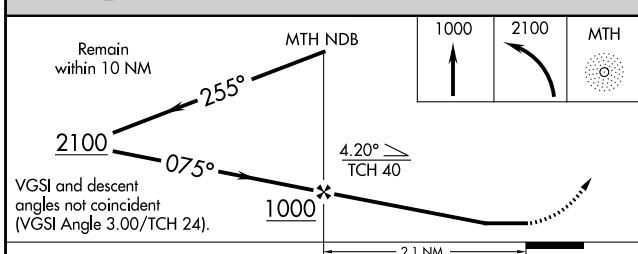
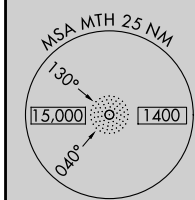
<p>▼ Helicopter visibility reduction below 3/4 SM NA. ▲ When local altimeter setting not received, use Key West Intl altimeter setting and increase all MDAs 100 feet and Cat D visibility 1/4 mile.</p>	<p>MISSED APPROACH: Climb to 1000 then climbing left turn to 2100 direct MTH NDB and hold.</p>
---	--

ASOS 135.525	MIAMI CENTER 133.5 306.9	UNICOM 122.8 (CTAF) 1
------------------------	------------------------------------	---------------------------------



SE-3, 21 JUN 2018 to 19 JUL 2018

SE-3, 21 JUN 2018 to 19 JUL 2018



CATEGORY	A	B	C	D	FAF to MAP 2.1 NM					
	460-1 455 (600-1)		460-1½ 455 (500-1½)	580-2 575 (600-2)	Knots	60	90	120	150	180
CIRCLING					Min:Sec	2:06	1:24	1:03	0:50	0:42

NDB-A

WAAS CH 58312 W25A	APP CRS 251°	Rwy Idg 5008 TDZE 5 Apt Elev 5
--	------------------------	---

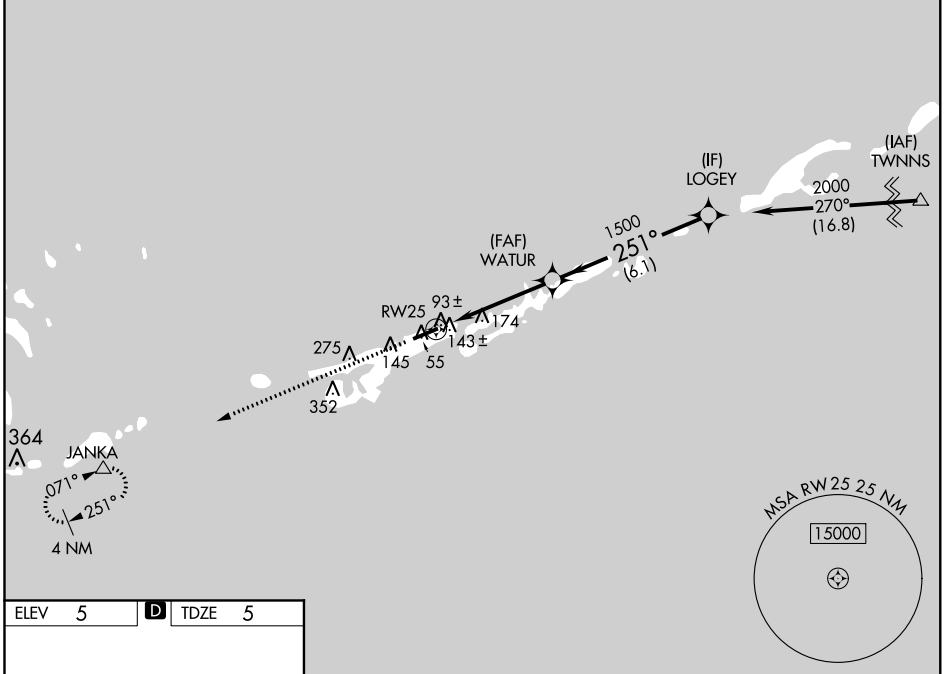
RNAV (GPS) RWY 25

THE FLORIDA KEYS MARATHON INTL (MTH)

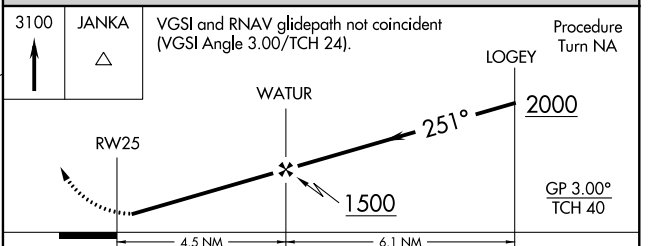
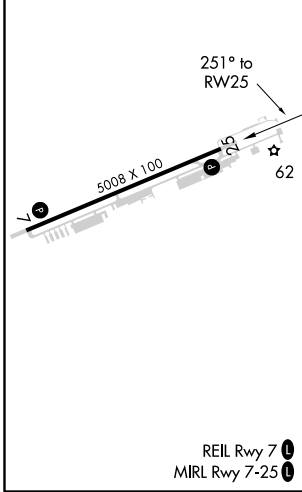
▼ DME/DME RNP-0.3 NA. Helicopter visibility reduction below 3/4 SM NA. When local altimeter setting not received, use Key West Intl altimeter setting and increase all DA 93 feet and MDA 100 feet, and increase LPV all Cats visibility 1/2 mile; LNAV/VNAV all Cats visibility 1/4 mile; LNAV Cats C and D visibility 1/4 mile and increase Circling Cat D visibility 1/4 mile. Baro-VNAV NA when using Key West Intl altimeter setting.

▲ MISSED APPROACH: Climb to 3100 direct JANKA and hold.

ASOS 135,525	MIAMI CENTER 133.5 306.9	UNICOM 122.8 (CTAF) 0
------------------------	------------------------------------	---------------------------------



ELEV 5	D	TDZE 5
--------	----------	--------



CATEGORY	A	B	C	D
LPV DA	315-1 310 (400-1)			
LNAV/VNAV DA	404-1 1/2 399 (400-1 1/2)			
LNAV MDA	440-1	435 (500-1)	440-1 1/4 435 (500-1 1/4)	440-1 1/2 435 (500-1 1/2)
CIRCLING	460-1	455 (500-1)	460-1 1/2 455 (500-1 1/2)	580-2 575 (600-2)

SE-3, 21 JUN 2018 to 19 JUL 2018

SE-3, 21 JUN 2018 to 19 JUL 2018

WAAS CH 99605 W07A	APP CRS 071°	Rwy Idg TDZE Apt Elev	5008 5 5
--	------------------------	-----------------------------	-------------------------------------

RNAV (GPS) RWY 7

THE FLORIDA KEYS MARATHON INTL (MTH)

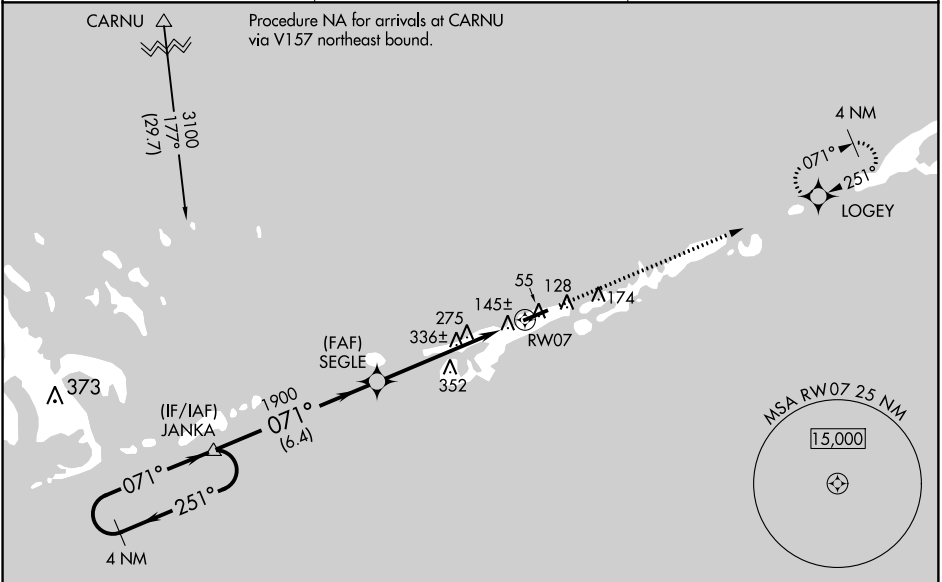
⚠ Baro-VNAV NA when using Key West Intl altimeter setting. For uncompensated Baro-VNAV systems, LNAV/VNAV NA below -15°C (5°F) or above 49°C (120°F). DME/DME RNP-0.3 NA.
⚠ Helicopter visibility reduction below ¾ SM NA. When local altimeter setting not received, use Key West Intl altimeter setting and increase all DAs 93 feet, increase all MDAs 100 feet, increase LPV and LNAV/VNAV all Cats visibility ½ mile, LNAV Cats C and D visibility ½ mile, and Circling Cat C visibility ½ mile, Circling Cat D visibility ¼ mile.

MISSED APPROACH:
Climb to 2000 direct LOGEY and hold.

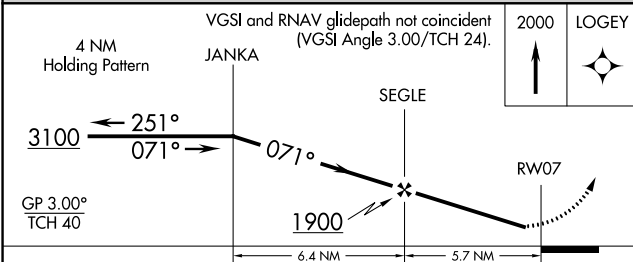
ASOS
135.525

MIAMI CENTER
133.5 306.9

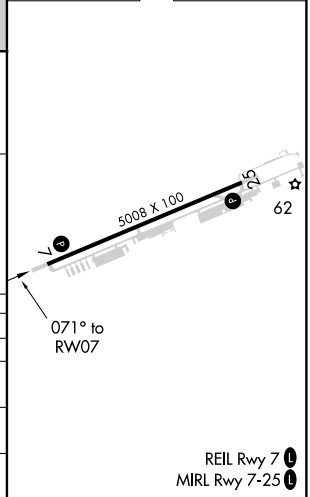
UNICOM
122.8 (CTAF) 0



ELEV	5	D	TDZE	5
------	---	----------	------	---



CATEGORY	A	B	C	D
LPV DA		389-1¼	384 (400-1¼)	
LNAV/VNAV DA		441-1½	436 (500-1½)	
LNAV MDA	600-1	595 (600-1)	600-1½ 595 (600-1½)	600-1¾ 595 (600-1¾)
CIRCLING	600-1	595 (600-1)	600-1½ 595 (600-1½)	600-2 595 (600-2)



REIL Rwy 7 **0**
MIRL Rwy 7-25 **0**

SE-3, 21 JUN 2018 to 19 JUL 2018

SE-3, 21 JUN 2018 to 19 JUL 2018