

(DIDL5.DIDL5) 18144

DIDL5 FIVE DEPARTURE

AL-266 (FAA)

MISSOULA INTL (MSO)

MISSOULA, MONTANA

**TOP ALTITUDE:
14000**

KALISPELL
113.2 FCA
Chan 79
N48°12.85'-W114°10.55'
L-13, H-1

MULLAN PASS
117.8 MLP
Chan 125
N47°27.41'-W115°38.76'
L-13, H-1

ORONE
N47°10.86'
W114°32.62'

DIDL5
N47°03.01'
W114°19.34'
7800

CHARL
N47°28.34'
W114°07.37'

JESSY
N47°23.43'
W114°07.03'
13000

ATIS
126.65
GND CON
121.9
MISSOULA TOWER *
118.4 377.175
SPOKANE DEP CON
124.9 298.95
SALT LAKE CITY CENTER
133.4 285.4

MISSOULA
112.8 MSO
Chan 75
N46°54.48'-W114°05.02'
L-13
10000

SALMON
113.5 LKT
Chan 82
N45°01.28'-W114°05.05'
L-13, H-1

TAKEOFF MINIMUMS

Rwy 30: Standard with minimum climb of 275' per NM to 7800.

NOTE: DME required.

NOTE: Chart not to scale.

DEPARTURE ROUTE DESCRIPTION

TAKEOFF RUNWAY 30: Climb on MSO R-298 to cross DIDL5 at or above 7800, thence on assigned transition or route.

KALISPELL TRANSITION (DIDL5.FCA): From over DIDL5, left turn on MSO R-298 to MSO VOR/DME, then on MSO R-344 to JESSY, then on MSO R-344 and FCA R-159 to FCA VOR/DME.

MISSOULA TRANSITION (DIDL5.MSO): From over DIDL5, left turn on MSO R-298 to MSO VOR/DME.

MULLAN PASS TRANSITION (DIDL5.MLP): From over DIDL5 on MSO R-298 to ORONE, then on MLP R-095 to MLP VOR/DME.

SALMON TRANSITION (DIDL5.LKT): From over DIDL5 left turn on MSO R-298 to MSO VOR/DME, then on MSO R-167 and LKT R-347 to LKT VOR/DME.

NW-1, 08 NOV 2018 to 06 DEC 2018

NW-1, 08 NOV 2018 to 06 DEC 2018

DIDL5 FIVE DEPARTURE

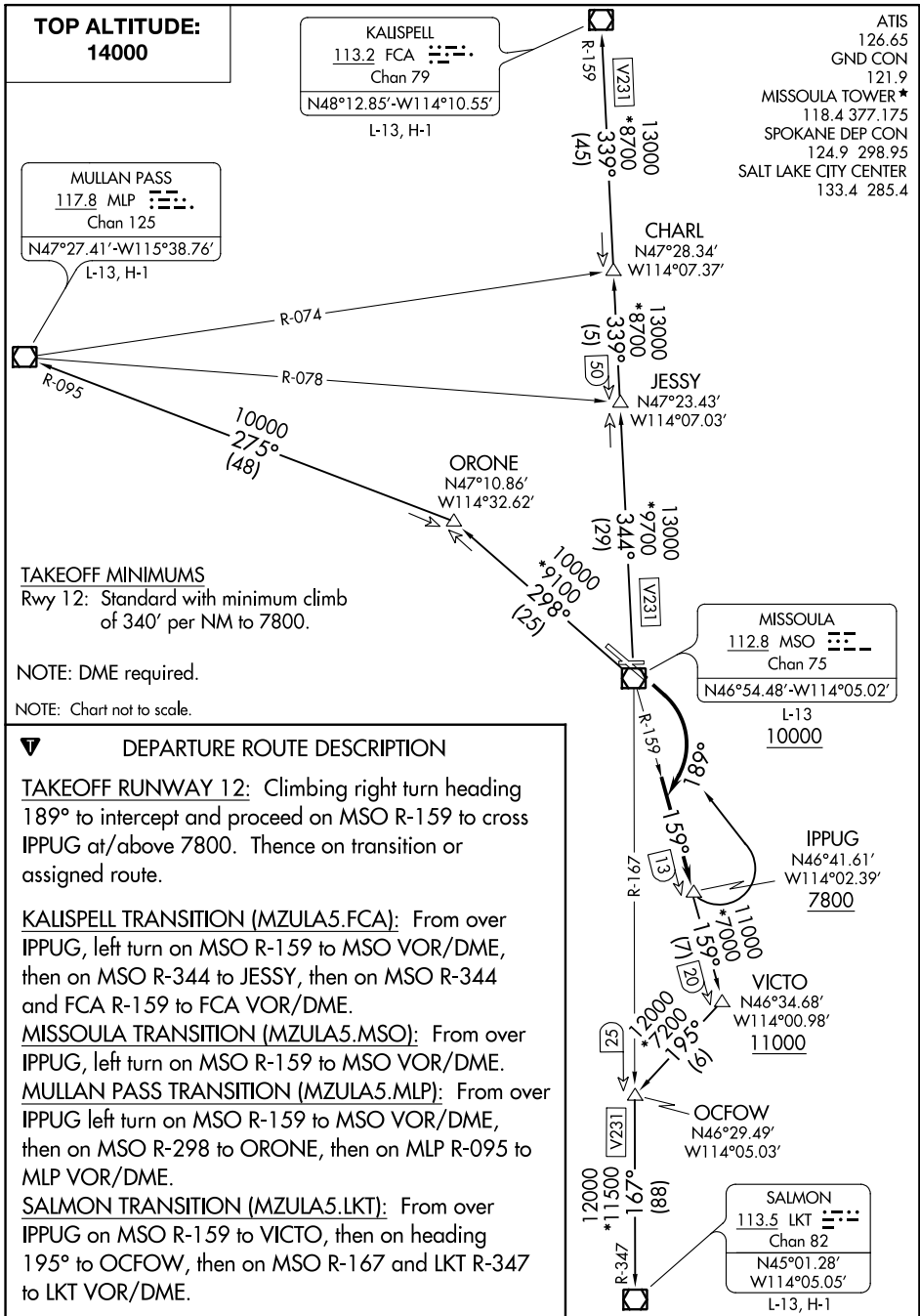
(DIDL5.DIDL5) 24MAY18

MISSOULA, MONTANA
MISSOULA INTL (MSO)

MZULA FIVE DEPARTURE

AL-266 (FAA)

MISSOULA INTL (MSO)
MISSOULA, MONTANA



NW-1, 08 NOV 2018 to 06 DEC 2018

NW-1, 08 NOV 2018 to 06 DEC 2018

MZULA FIVE DEPARTURE

(MZULA5.IPPUG) 24MAY18

MISSOULA, MONTANA
MISSOULA INTL (MSO)