

LOC RWY 3

FOOTHILLS RGNL (MRN)

LOC I-MRNR	APP CRS	Rwy Idg	5500
111.1	031°	TDZE	1248
		Apt Elev	1270

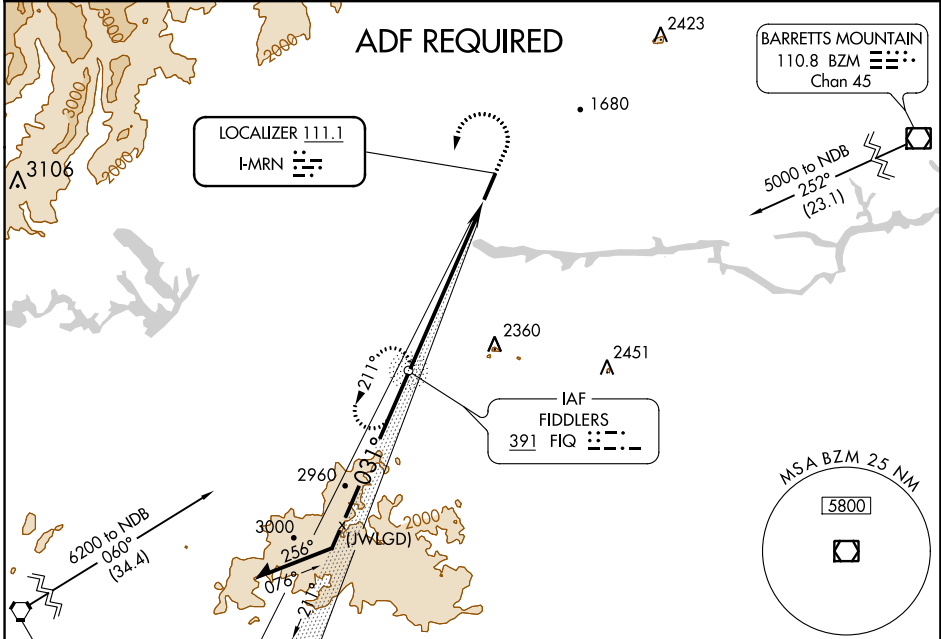
ADF Required. When local altimeter setting not received, use Hickory altimeter setting and increase all MDA 40 feet, increase S-3 Cat C visibility ¼ mile and Circling Cat C visibility ½ mile.

MISSED APPROACH: Climb to 3200 then climbing left turn to 5000 direct FIQ NDB and hold.

AWOS-3P
124.175

ATLANTA CENTER
125.15 263.0

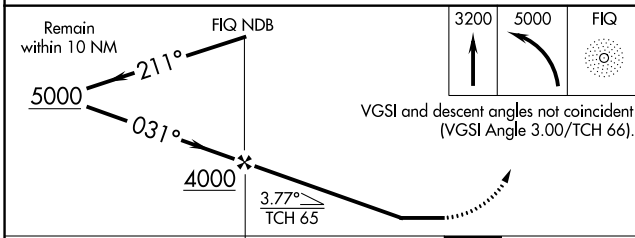
UNICOM
122.7 (CTAF)



SE-2: 08 NOV 2018 to 06 DEC 2018

SE-2: 08 NOV 2018 to 06 DEC 2018

ELEV 1270	TDZE 1248
MIRL Rwy 3-21	REIL Rws 3 and 21



ELEV 1270	TDZE 1248				
MIRL Rwy 3-21	REIL Rws 3 and 21				
FAF to MAP 6.8 NM					
Knots	60	90	120	150	180
Min:Sec	6:48	4:32	3:24	2:43	2:16

CATEGORY	A	B	C	D
S-3	1740-1	492 (500-1)	1740-1 3/8 492 (500-1 3/8)	NA
CIRCLING	1740-1 470 (500-1)	1760-1 490 (500-1)	1760-1 1/2 490 (500-1 1/2)	NA

RNAV (GPS) RWY 21

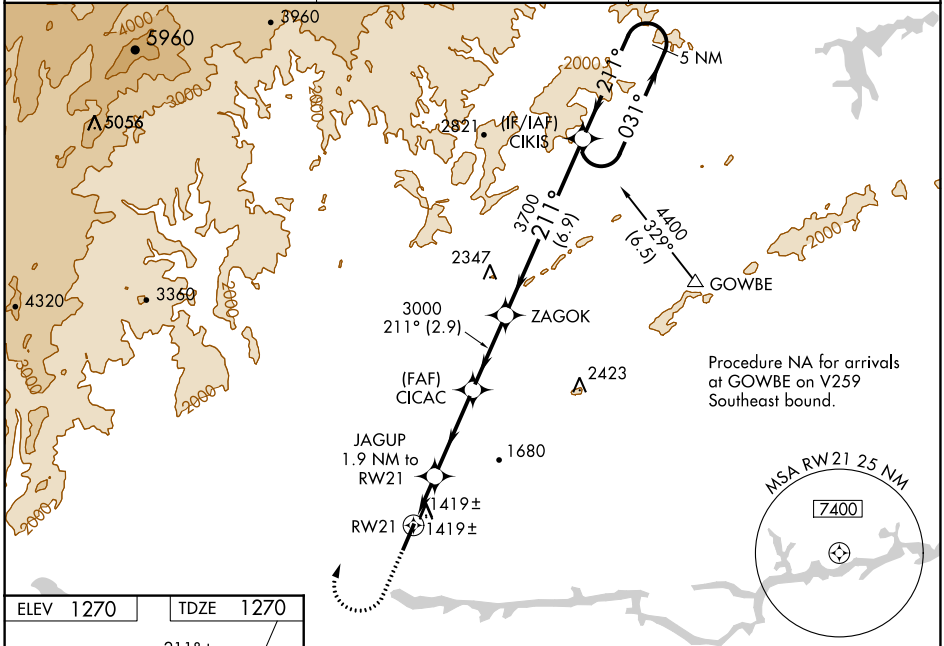
FOOTHILLS RGNL (MRN)

WAAS CH 40322 W21A	APP CRS 211°	Rwy Idg TDZE Apt Elev	5500 1270 1270
--	------------------------	-----------------------------	---

⚠ Baro-VNAV NA when using Hickory altimeter setting. For uncompensated Baro-VNAV systems, LNAV/VNAV NA below -17°C (2°F) or above 35°C (95°F).
⚠ DME/DME RNP-0.3 NA. VDP NA with Hickory altimeter setting. When local altimeter setting not received use Hickory altimeter setting and increase all DA 39 feet and all MDA 40 feet; increase LPV all Cats visibility ¼ mile, increase LNAV/VNAV all Cats visibility ⅓ mile and increase LNAV Cats C and D visibility ¼ mile.

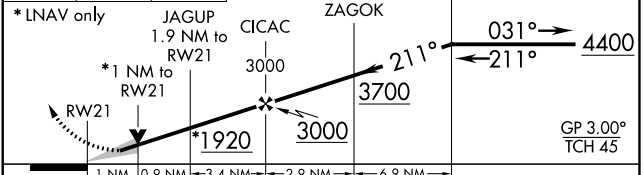
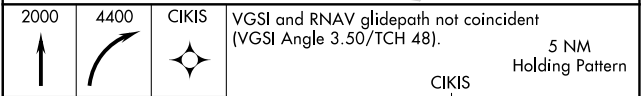
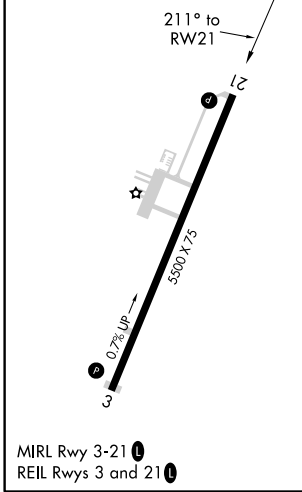
MISSED APPROACH: Climb to 2000 then climbing right turn to 4400 direct CIKIS and hold.

AWOS-3P 124.175	ATLANTA CENTER 125.15 263.0	UNICOM 122.7 (CTAF) 0
---------------------------	---------------------------------------	---------------------------------



Procedure NA for arrivals at GOWBE on V259 Southeast bound.

ELEV 1270	TDZE 1270
-----------	-----------



CATEGORY	A	B	C	D
LPV DA		1520-¾	250 (300-¾)	
LNAV/VNAV DA		1600-1½	330 (400-1½)	
LNAV MDA	1680-1	410 (500-1)	1680-1½	410 (500-1½)
CIRCLING	1720-1 450 (500-1)	1760-1 490 (500-1)	1760-1½ 490 (500-1½)	1840-2 570 (600-2)

SE-2, 08 NOV 2018 to 06 DEC 2018

SE-2, 08 NOV 2018 to 06 DEC 2018

WAAS CH 69322 W03A	APP CRS 031°	Rwy Idg TDZE 1248 Apt Elev 1270	5500
--	------------------------	---	-------------

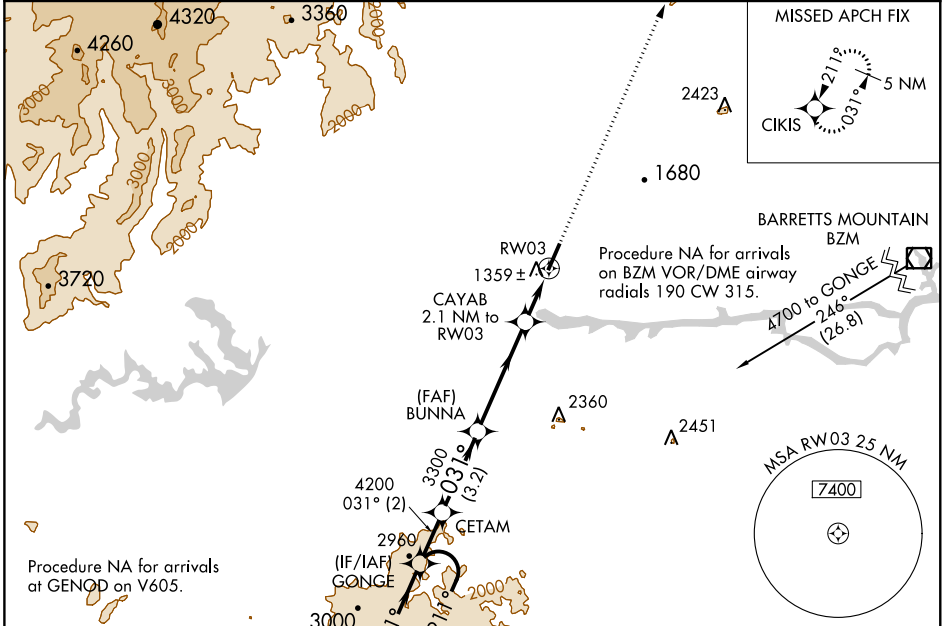
RNAV (GPS) RWY 3

FOOTHILLS RGNL (MRN)

Baro-VNAV NA when using Hickory altimeter setting. For uncompensated Baro-VNAV systems, LNAV/VNAV NA below -17°C (2°F) or above 36°C (96°F). DME/DME RNP-0.3 NA.
VDP NA with Hickory altimeter setting. When local altimeter setting not received use Hickory altimeter setting and increase all DA 39 feet and all MDA 40 feet; increase LNAV/VNAV all Cats visibility 1/8 mile and increase LNAV Cats C and D visibility 1/8 mile.

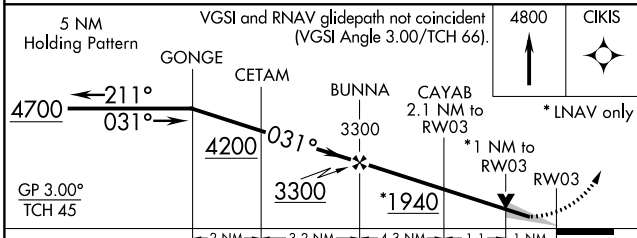
MISSED APPROACH:
Climb to 4800 direct CIKIS and hold.

AWOS-3P 124.175	ATLANTA CENTER 125.15 263.0	UNICOM 122.7 (CTAF) 0
---------------------------	---------------------------------------	---------------------------------

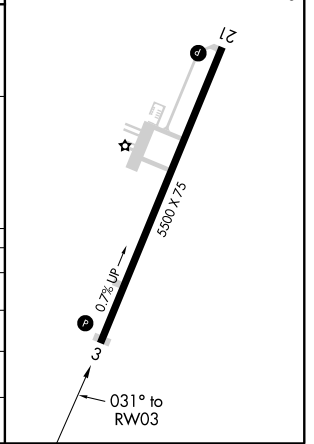


Procedure NA for arrivals at GENOD on V605.
 (IAF) GENOD 4700 NoPT 073° (12.8)
 (FAF) BUNNA 3300 031° (3.2)
 (IF/IAF) GONGE 2960 031° (2.1)
 4200 031° (2)
 2360
 2451
 MSA RW03 25 NM 7400
 Procedure NA for arrivals on BZM VOR/DME airway radials 190 CW 315.

ELEV 1270	TDZE 1248
MIRL Rwy 3-21	
REIL Rwy 3 and 21	



CATEGORY	A	B	C	D
LPV DA		1498-1	250 (300-1)	
LNAV/VNAV DA		1558-1 1/8	310 (300-1 1/8)	
LNAV MDA		1620-1	372 (400-1)	
CIRCLING	1720-1	1760-1	1760-1 1/2	1840-2
	450 (500-1)	490 (500-1)	490 (500-1 1/2)	570 (600-2)



SE-2, 08 NOV 2018 to 06 DEC 2018

SE-2, 08 NOV 2018 to 06 DEC 2018