

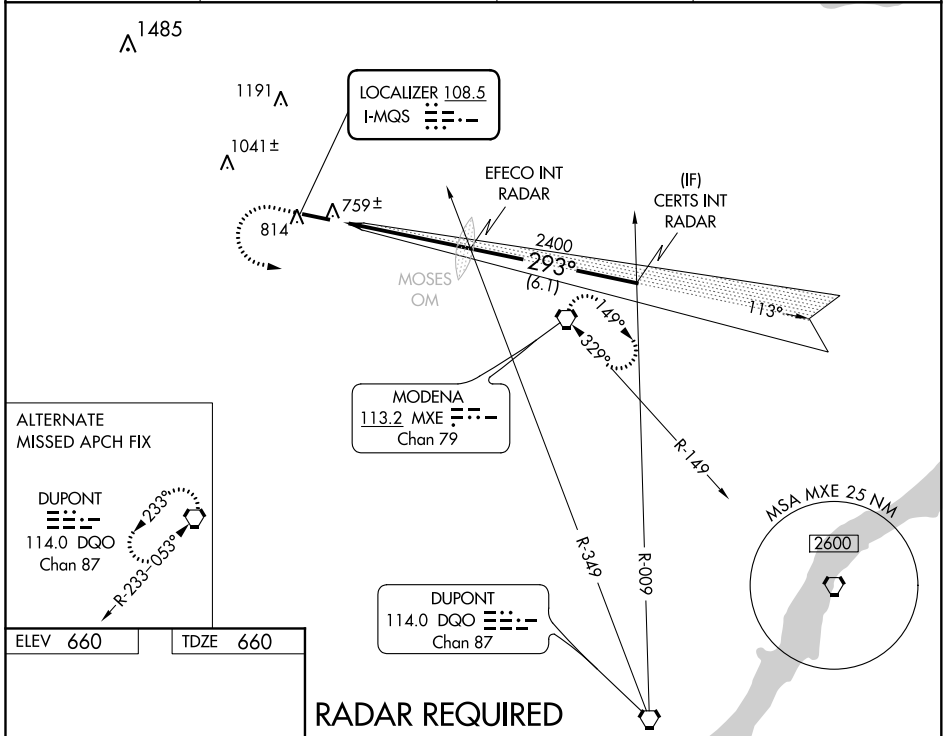
LOC I-MQS 108.5	APP CRS 293°	Rwy Idg TDZE Apt Elev	5400 660 660
---------------------------	------------------------	-----------------------------	-----------------------------------------

ILS or LOC RWY 29
CHESTER COUNTY G O CARLSON (MQS)

⚠ Rwy 29 helicopter visibility reduction below 3/4 SM NA. When local altimeter setting not received, use Heritage Fld altimeter setting and increase all DA 98 feet, and all MDA 100 feet, S-ILS 29 visibility 1/4 mile all Cats, S-LOC 29 visibility Cats C and D 1/4 mile, and Circling visibility Cat C and D 1/4 mile.

⚠ MISSED APPROACH: Climb to 1300 then climbing left turn to 2400 direct MXE VORTAC and hold.

AWOS-3 126.25	PHILADELPHIA APP CON 124.35 319.15	CLNC DEL 125.6	UNICOM 122.7 (CTAF) 0
-------------------------	----------------------------------------------	--------------------------	---------------------------------

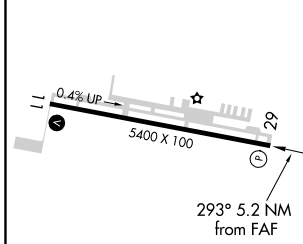


ALTERNATE MISSED APCH FIX

DUPONT
114.0 DGO
Chan 87

R-233-053

ELEV 660	TDZE 660
----------	----------

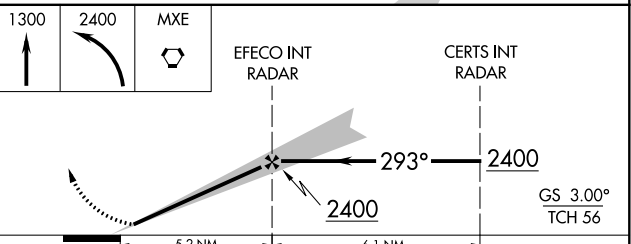


HIRL Rwy 11-29 0
REIL Rwy 11-29 0

FAF to MAP 5.2 NM

Knots	60	90	120	150	180
Min:Sec	5:12	3:28	2:36	2:05	1:44

RADAR REQUIRED



CATEGORY	A	B	C	D
S-ILS 29	919-1 259 (300-1)			
S-LOC 29	1040-1 380 (400-1)			1040-1 1/4 380 (400-1 1/4)
CIRCLING	1140-1 480 (500-1)	1240-1 580 (600-1)	1280-1 3/4 620 (700-1 1/4)	1440-2 1/2 780 (800-2 1/2)

NE-4, 12 AUG 2021 to 09 SEP 2021

NE-4, 12 AUG 2021 to 09 SEP 2021

WAAS CH 63006 W11A	APP CRS 113°	Rwy Idg TDZE Apt Elev	5400 644 660
----------------------------------------	------------------------	-----------------------------	-----------------------------------------

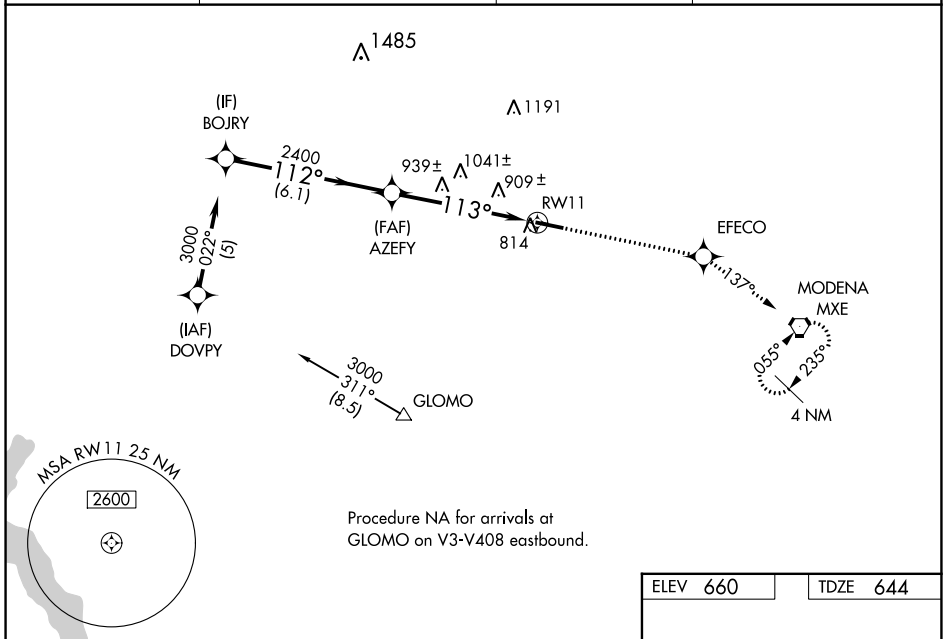
RNAV (GPS) RWY 11

CHESTER COUNTY G O CARLSON (MQS)

⚠ Baro-VNAV NA when using Heritage Fld altimeter setting. For uncompensated Baro-VNAV systems, LNAV/VNAV NA below -16°C (4°F) or above 47°C (116°F). DME/DME RNP-0.3 NA. Rwy 11 helicopter visibility reduction below 3/4 SM NA. When local altimeter setting not received, use Heritage Fld altimeter setting and increase all DA 98 feet and all MDA 100 feet, LPV visibility 1/2 mile all Cats, LNAV/VNAV visibility 1/2 mile all Cats, LNAV visibility Cats C and D 1/4 mile, and Circling visibility Cat C and D 1/4 mile.

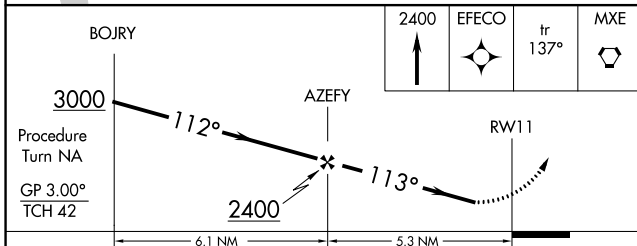
MISSED APPROACH:
Climb to 2400 direct EFECO and on 137° track to MXE VORTAC and hold.

AWOS-3 126.25	PHILADELPHIA APP CON 124.35 319.15	CLNC DEL 125.6	UNICOM 122.7 (CTAF) 0
-------------------------	----------------------------------------------	--------------------------	---------------------------------



NE-4, 12 AUG 2021 to 09 SEP 2021

NE-4, 12 AUG 2021 to 09 SEP 2021



ELEV 660	TDZE 644
----------	----------

HIRL Rwy 11-29 **0**
REIL Rwy 11-29 **0**

CATEGORY	A	B	C	D
LPV DA	955-1		311 (300-1)	
LNAV/VNAV DA	1274-2 1/4		630 (700-2 1/4)	
LNAV MDA	1200-1	556 (600-1)	1200-1 1/2 556 (600-1 1/2)	1200-1 3/4 556 (600-1 3/4)
CIRCLING	1200-1 540 (600-1)	1240-1 580 (600-1)	1280-1 3/4 620 (700-1 3/4)	1440-2 780 (800-2)

WAAS CH 82506 W29A	APP CRS 293°	Rwy Idg TDZE Apt Elev	5400 660 660
----------------------------------------	------------------------	-----------------------------	-----------------------------------------

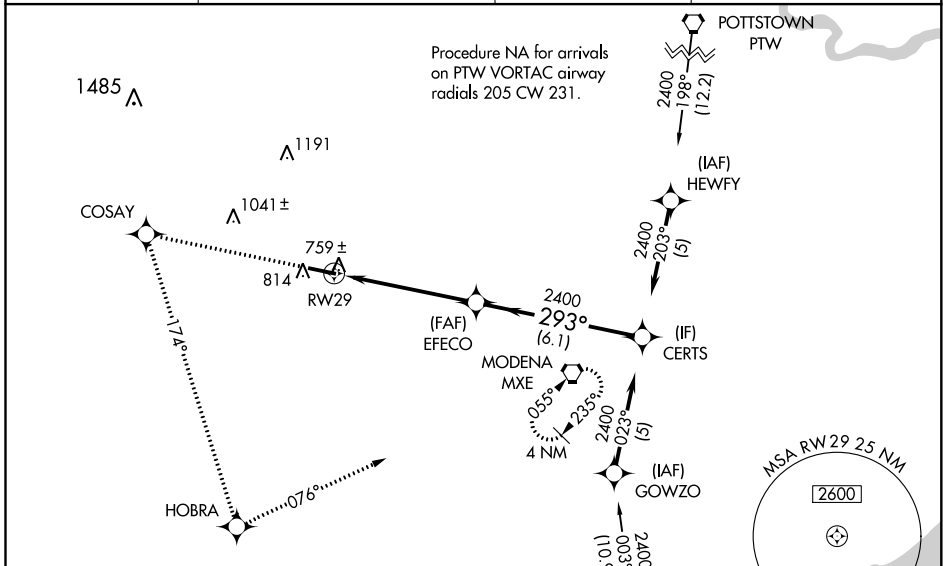
RNAV (GPS) RWY 29

CHESTER COUNTY G O CARLSON (MQS)

⚠ Baro-VNAV NA when using Heritage Fld altimeter setting. For uncompensated Baro-VNAV systems, LNAV/VNAV NA below -16°C (4°F) or above 47°C (116°F). DME/DME RNP-0.3 NA. When local altimeter setting not received, use Heritage Fld altimeter setting and increase all DA 98 feet and all MDA 100 feet, LPV visibility ¼ mile all Cats, LNAV/VNAV visibility ¼ mile all Cats, LNAV visibility Cats C and D ¼ mile, and Circling visibility Cat C and D ¼ mile. VDP NA when using Heritage Fld altimeter setting. Rwy 29 helicopter visibility reduction below ¾ SM NA.

⚠ MISSED APPROACH: Climb to 2400 direct COSAY and left turn on 174° track to HOBRA and left turn on 076° track to MXE VORTAC and hold.

AWOS-3 126.25	PHILADELPHIA APP CON 124.35 319.15	CLNC DEL 125.6	UNICOM 122.7 (CTAF) 0
-------------------------	----------------------------------------------	--------------------------	---------------------------------

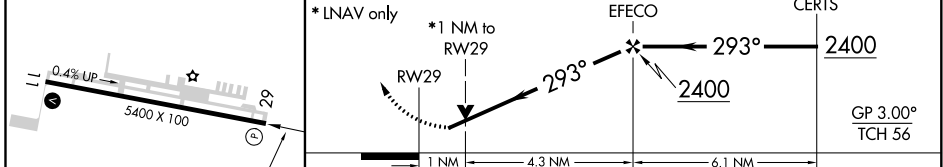
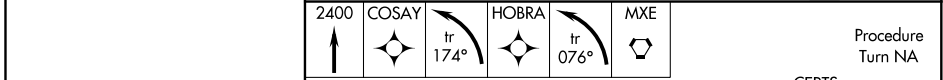


NE-4, 12 AUG 2021 to 09 SEP 2021

NE-4, 12 AUG 2021 to 09 SEP 2021

ELEV 660	TDZE 660
----------	----------

Procedure NA for arrivals on DGO VORTAC airway radials 309 CW 053.



CATEGORY	A	B	C	D
LPV DA		938-1	278 (300-1)	
LNAV/VNAV DA		1029-1¼	369 (400-1¼)	
LNAV MDA		1020-1	360 (400-1)	1020-1¼ 360 (400-1¼)
CIRCLING	1140-1 480 (500-1)	1240-1 580 (600-1)	1280-1¾ 620 (700-1¾)	1440-2½ 780 (800-2½)

HIRL Rwy 11-29 **0**
REIL Rwy 11-29 **0**

