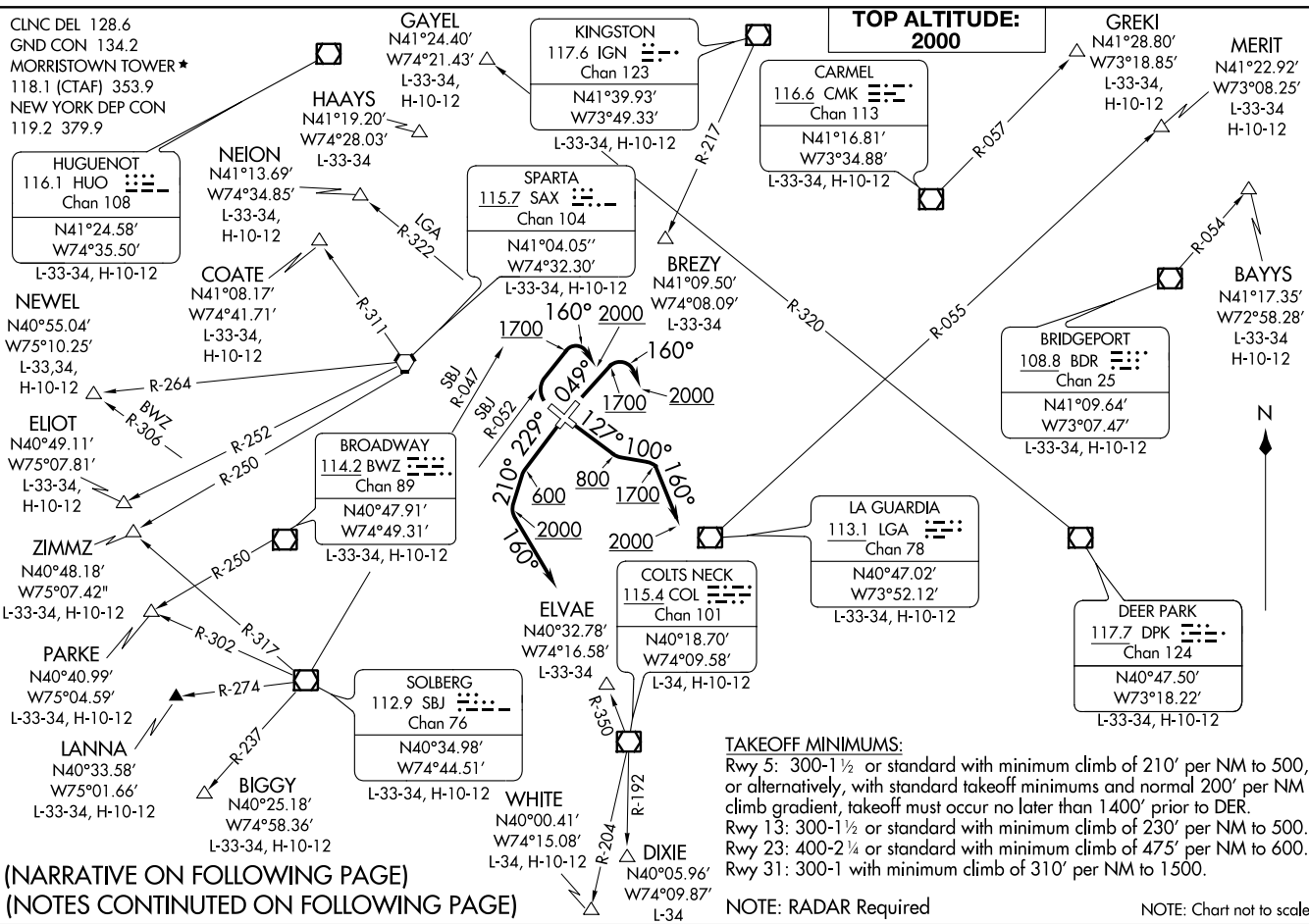


(MMU7.MMU) 28FEB19

MORRISTOWN SEVEN DEPARTURE

MORRISTOWN, NEW JERSEY
MORRISTOWN MUNI (MMT)



(NARRATIVE ON FOLLOWING PAGE)
(NOTES CONTINUED ON FOLLOWING PAGE)

(MMU7.MMU) 20254

AL-931 (FAA)

MORRISTOWN MUNI (MMT)
MORRISTOWN, NEW JERSEY

MORRISTOWN SEVEN DEPARTURE



DEPARTURE ROUTE DESCRIPTION

TAKEOFF RUNWAY 5: Climb heading 049° to 1700, then climbing right turn heading 160° to 2000, thence...

TAKEOFF RUNWAY 13: Climb heading 127° to 800, then climb heading 100° to 1700, then climb heading 160° to 2000, thence...

TAKEOFF RUNWAY 23: Climb heading 229° to 600, then climb heading 210° to 2000, then turning left heading 160°, thence...

TAKEOFF RUNWAY 31: Climbing right turn on SBJ R-052 to 1700, then climbing right turn heading 160° to 2000, thence...

...as per notes or vectors to assigned route/fix. Expect clearance to filed altitude/flight level ten (10) minutes after departure.

LOST COMMUNICATIONS: For aircraft proceeding to COATE, NEION, HAAYS, GAYEL, BREZY, if radio contact lost/not established with ATC, climb to 3000 feet after crossing SBJ R-047.

NOTE: BAYYS departures will be issued vectors to BDR/BDR R-054.

NOTE: BIGGY departures will be issued vectors to SBJ/SBJ R-237.

NOTE: BREZY departures will be issued vectors to IGN R-217 to BREZY.

NOTE: COATE departures will be issued vectors to SAX/SAX R-311.

NOTE: DIXIE departures will be issued vectors to COL R-350/COL/COL R-192 or ELVAE/COL.

NOTE: ELIOT departures will be issued vectors to SAX R-252. ELIOT may be accessed by all types of aircraft requesting a final altitude of 14000 or 16000.

NOTE: GAYEL departures will be issued vectors to DPK R-320.

NOTE: HAAYS departures will be issued vectors to HUO.

NOTE: LANNA departures will be issued vectors to SBJ/SBJ R-274.

NOTE: MERIT departures will be issued vectors to LGA R-055.

NOTE: NEION departures will be issued vectors to LGA R-322.

NOTE: NEWEL departures will be issued vectors to SAX/SAX R-264. NEWEL may be accessed by jet aircraft only requesting a final altitude at or above flight level 180.

NOTE: Rwy 23 PARKE departures will be issued vectors to BWZ R-250 or SBJ/SBJ R-302.

NOTE: WHITE departures will be issued vectors to COL R-350/COL/COL R-204 or ELVAE/COL.

NOTE: ZIMMZ departures will be issued vectors SBJ/SBJ R-317. ZIMMZ may be accessed by all types of aircraft requesting a final altitude at or above flight level 180.

NE-2, 27 JAN 2022 to 24 FEB 2022

NE-2, 27 JAN 2022 to 24 FEB 2022