

WAAS CH 78402 W12A	APP CRS 123°	Rwy Idg TDZE Apt Elev	3588 1051 1051
--	------------------------	-----------------------------	---

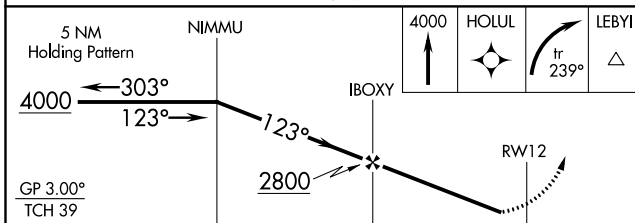
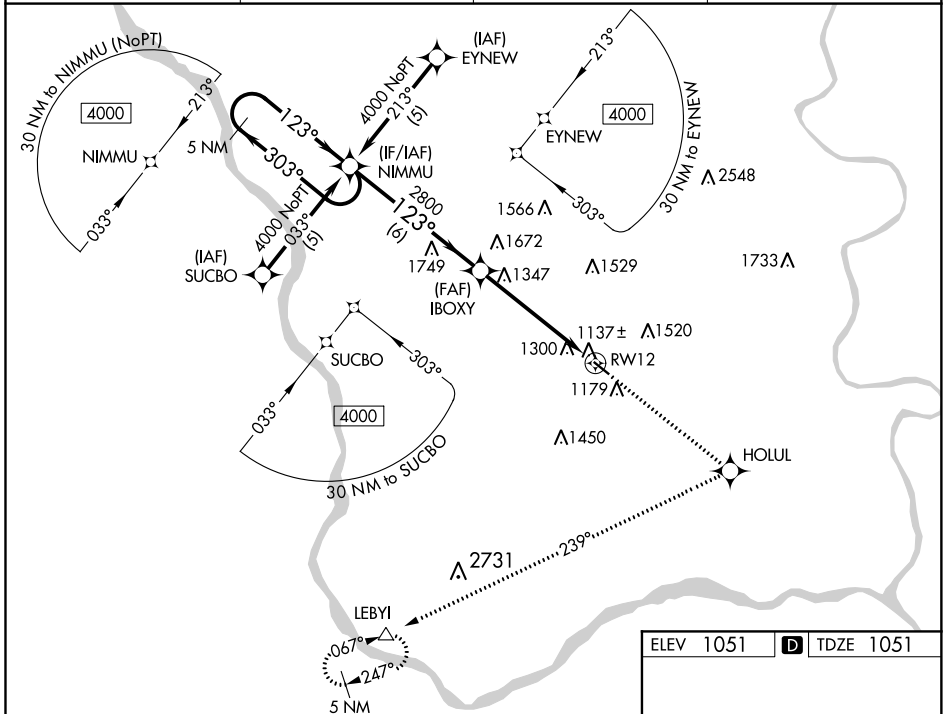
RNAV (GPS) RWY 12

MILLARD (M.L.E.)

⚠ DME/DME RNP-0.3 NA. If local altimeter setting not received, use Council Bluffs Muni altimeter setting and increase all DAs/MDAs 80 feet. Baro-VNAV NA when using Council Bluffs Muni altimeter setting. For uncompensated Baro-VNAV systems, LNAV/VNAV NA below -17°C (2°F) or above 54°C (130°F). Visibility reduction by helicopters NA.

MISSED APPROACH: Climb to 4000 direct HOLUL and right turn via 239° track to LEBYI and hold.

AWOS-3 118.25	OMAHA APP CON 120.1 354.05	CLNC DEL 125.4	UNICOM 123.0 (CTAF) 0
-------------------------	--------------------------------------	--------------------------	---------------------------------



ELEV 1051	D TDZE 1051
-----------	--------------------

REIL Rwy 12 **0**
MIRL Rwy 12-30 **0**

CATEGORY	A	B	C	D
LPV DA	1387-1¼	336 (400-1¼)		NA
LNAV/VNAV DA	1668-2	617 (700-2)		NA
LNAV MDA	1660-1	609 (700-1)		NA
CIRCLING	1700-2	649 (700-2)		NA

NC-2, 05 NOV 2020 to 03 DEC 2020

NC-2, 05 NOV 2020 to 03 DEC 2020

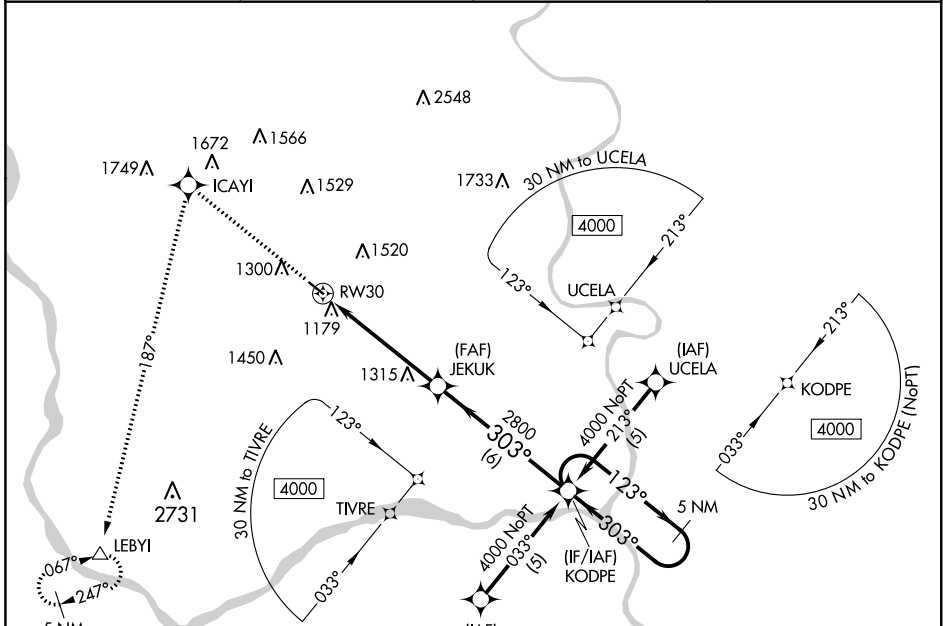
APP CRS 303°	Rwy Idg TDZE Apt Elev	3801 1050 1051
------------------------	-----------------------------	---

RNAV (GPS) RWY 30

MILLARD (MILE)

<p>▽ ▲</p> <p>DME/DME RNP-0.3 NA. If local altimeter setting not received, use Council Bluffs Muni altimeter setting and increase all MDAs 80 feet. Visibility reduction by helicopters NA.</p>	<p>MISSED APPROACH: Climb to 4000 direct ICAYI and left turn via 187° track to LEBYI and hold.</p>
---	--

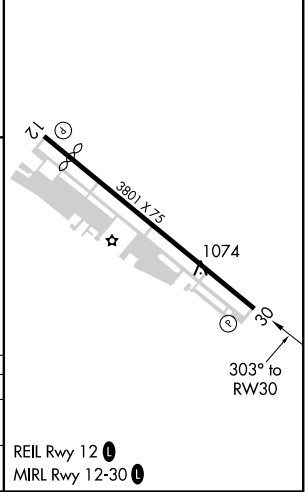
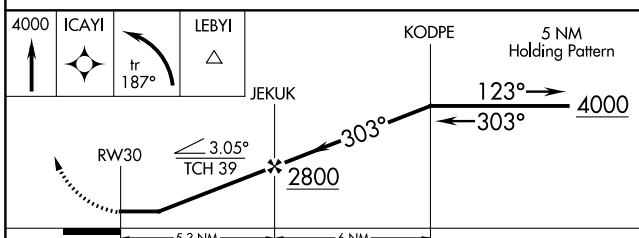
AWOS-3 118.25	OMAHA APP CON 120.1 354.05	CLNC DEL 125.4	UNICOM 123.0 (CTAF) ①
-------------------------	--------------------------------------	--------------------------	---------------------------------



NC-2, 05 NOV 2020 to 03 DEC 2020

NC-2, 05 NOV 2020 to 03 DEC 2020

ELEV 1051	D TDZE 1050
-----------	--------------------



CATEGORY	A	B	C	D
LNVA MDA	1620-1	570 (600-1)		NA
CIRCLING	1700-1	649 (700-1)		NA