

ORLANDO APP CON
128.37 338.2
ORLANDO INTL D-ATIS ARR
121.25

ORMOND BEACH
112.6 OMN
Chan 73
N29°18.20' - W81°06.76'
L-21-23-24, H-8

OCALA
113.7 OCF
Chan 84

ORLANDO
112.2 ORL
Chan 59

LAMMA
N29°00.87' - W81°05.38'
TURBOJET VERTICAL NAVIGATION
PLANNING INFORMATION

Expect clearance to cross at 15000' landing Patrick AFB, Melbourne Intl, and Merritt Island.
Expect clearance to cross at 12000' landing Orlando Intl, Kissimmee Gateway, Space Coast Rgnl, Cape Canaveral AFS Skid Strip, and NASA Shuttle Landing Facility.
NOTE: Orlando Intl landing south: Expect clearance to cross at 250K IAS.

COZMO
N28°47.95' - W81°04.36'
TURBOJET VERTICAL NAVIGATION
PLANNING INFORMATION

Expect clearance to cross at 10000' landing Orlando Intl Runway 18.

JESUP
N28°53.31' - W81°04.78'

BITHO
N28°37.86' - W81°03.56'
TURBOJET VERTICAL NAVIGATION
PLANNING INFORMATION

Expect clearance to cross at 8000' landing NASA Shuttle Landing Facility, Cape Canaveral AFS Skid Strip, Merritt Island, Patrick AFB, and Melbourne Intl.

NASA SHUTTLE LANDING FACILITY

SPACE COAST RGNL

CAPE CANAVERAL AFS SKID STRIP

MERRITT ISLAND

PATRICK AFB

MELBOURNE INTL

ORLANDO INTL

KISSIMMEE GATEWAY

NOTE: Chart not to scale.

From over OMN VORTAC via OMN R-176 to BITHO INT. Expect radar vectors to final approach course after BITHO INT.

SE-3, 07 DEC 2017 to 04 JAN 2018

SE-3, 07 DEC 2017 to 04 JAN 2018

(COSTR.COSTR3) 17117

COSTR THREE ARRIVAL (RNAV)

AL-571 (FAA)

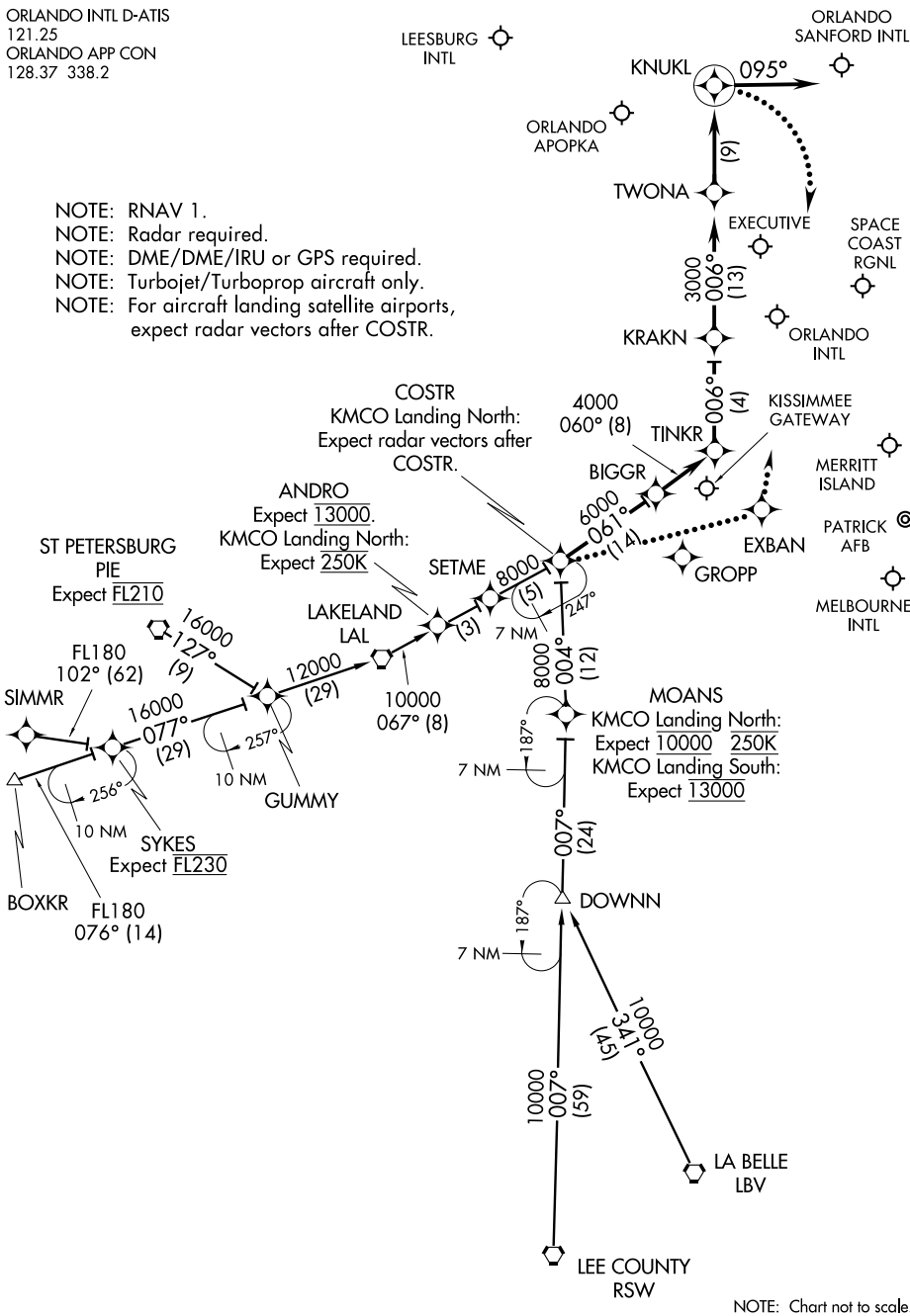
ORLANDO, FLORIDA

ORLANDO INTL D-ATIS
121.25
ORLANDO APP CON
128.37 338.2

LEESBURG INTL

ORLANDO SANFORD INTL

- NOTE: RNAV 1.
- NOTE: Radar required.
- NOTE: DME/DME/IRU or GPS required.
- NOTE: Turbojet/Turboprop aircraft only.
- NOTE: For aircraft landing satellite airports, expect radar vectors after COSTR.



SE-3, 07 DEC 2017 to 04 JAN 2018

SE-3, 07 DEC 2017 to 04 JAN 2018

NOTE: Chart not to scale.

COSTR THREE ARRIVAL (RNAV)

(COSTR.COSTR3) 29MAY14

ORLANDO, FLORIDA

ARRIVAL ROUTE DESCRIPTION

BOXKR TRANSITION (BOXKR.COSTR3):

LA BELLE TRANSITION (LBV.COSTR3):

LEE COUNTY TRANSITION (RSW.COSTR3):

SIMMR TRANSITION (SIMMR.COSTR3):

ST. PETERSBURG TRANSITION (PIE.COSTR3):

From over COSTR on track 061° to BIGGR, then as depicted to KNUKL, then on track 095°. Expect radar vectors.

LOST COMMUNICATIONS:

KMCO LANDING NORTH: Continue track to COSTR, then proceed direct to EXBAN, turn left to intercept the Rwy 36L final approach course, conduct approach.

KMCO LANDING SOUTH: Continue track to KNUKL, turn right to intercept the Rwy 18R final approach course, conduct approach.

SE-3, 07 DEC 2017 to 04 JAN 2018

SE-3, 07 DEC 2017 to 04 JAN 2018