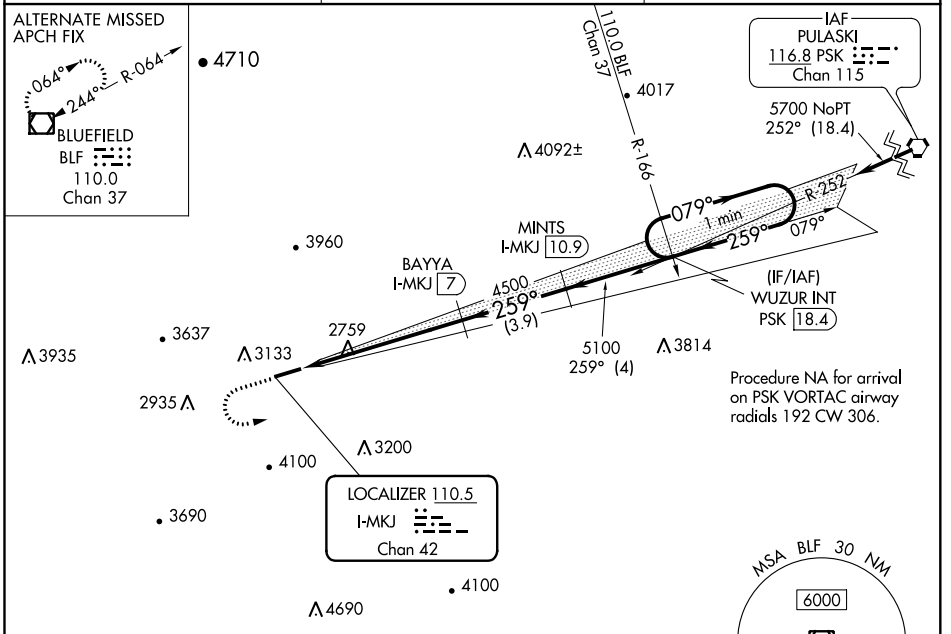


LOC/DME I-MKJ <b>110.5</b> Chan <b>42</b>	APP CRS <b>259°</b>	Rwy Idg TDZE Apt Elev <b>5252</b> <b>2519</b> <b>2558</b>
---	------------------------	--

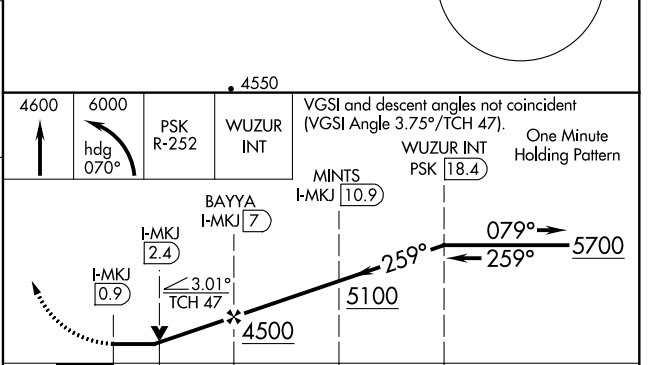
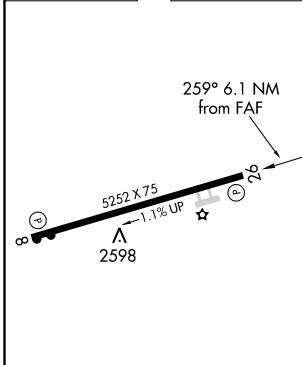
# LOC RWY 26

MOUNTAIN EMPIRE (MKJ)

<p><b>▼</b> Circling NA north of Rwy 8-26. <b>▲</b> NA Helicopter visibility reduction below 3/4 SM NA. DME required.</p>	<p>MISSED APPROACH: Climb to 4600 then climbing left turn to 6000 on heading 070° and PSK VORTAC R-252 to WUZUR INT and hold.</p>	
<p>AWOS-3 <b>123.875</b></p>	<p>ATLANTA CENTER <b>127.85 269.3</b></p>	<p>UNICOM <b>122.7 (CTAF) 0</b></p>



ELEV 2558	TDZE 2519
-----------	-----------



REIL Rwys 8 and 26 MIRL Rwy 8-26 0	FAF to MAP 6.1 NM				
Knots	60	90	120	150	180
Min:Sec	6:06	4:04	3:03	2:26	2:02
<b>☑</b> CIRCLING	3260-1	702 (800-1)	4440-3 1882 (1900-3)	NA	NA

NE-3, 02 DEC 2021 to 30 DEC 2021

NE-3, 02 DEC 2021 to 30 DEC 2021

WAAS CH <b>72802</b> <b>W26A</b>	APP CRS <b>259°</b>	Rwy Idg TDZE Apt Elev	<b>5252</b> <b>2519</b> <b>2558</b>
--	------------------------	-----------------------------	---

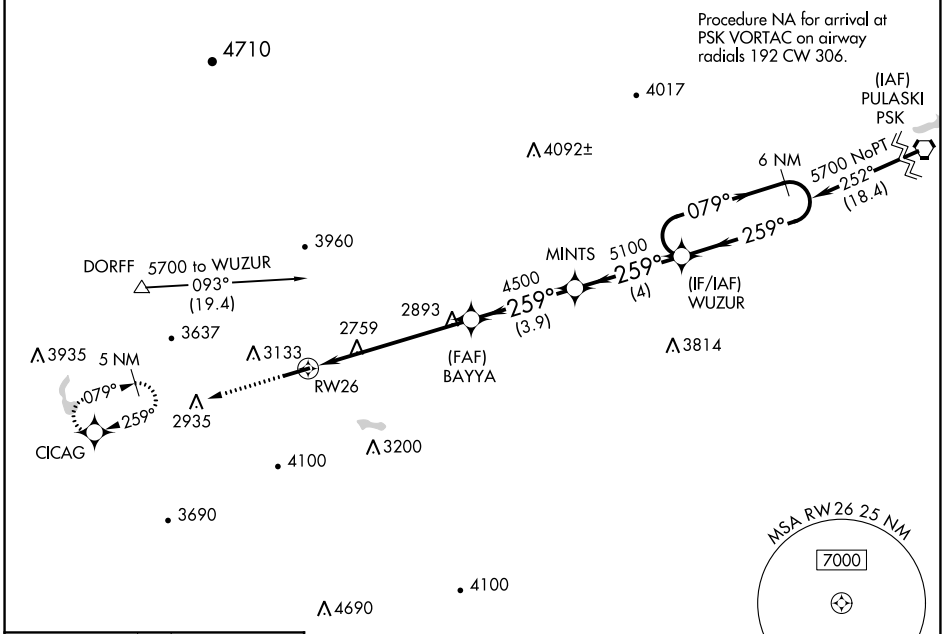
# RNAV (GPS) RWY 26

MOUNTAIN EMPIRE (MKJ)

**⚠** For uncompensated Baro-VNAV systems, LNAV/VNAV NA below -20°C (-4°F) or above 54°C (130°F). Circling NA north of Rwy 8-26. Rwy 26 helicopter visibility reduction below 3/4 SM NA. DME/DME RNP-0.3 NA.

**MISSED APPROACH:** Climb to 6200 direct CICAG and hold, continue climb-in-hold to 6200.

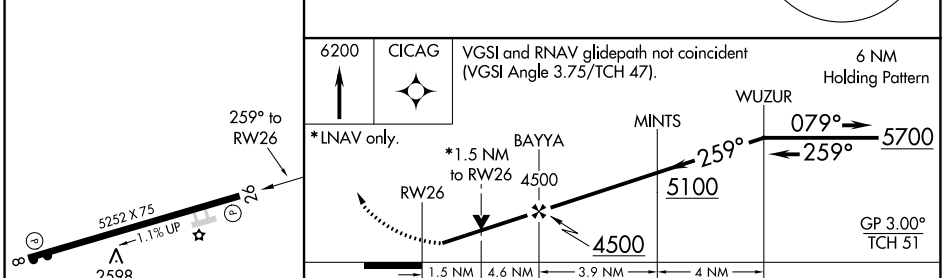
AWOS-3 <b>123.875</b>	ATLANTA CENTER <b>127.85 269.3</b>	UNICOM <b>122.7 (CTAF) 0</b>
--------------------------	---------------------------------------	---------------------------------



NE-3, 02 DEC 2021 to 30 DEC 2021

NE-3, 02 DEC 2021 to 30 DEC 2021

ELEV 2558	TDZE 2519
-----------	-----------



CATEGORY	A	B	C	D
LPV DA	3096-2		577 (600-2)	NA
LNAV/VNAV DA	3159-2½		640 (700-2½)	NA
LNAV MDA	3140-1	621 (600-1)	3140-1¾ 621 (600-1¾)	NA
<b>C</b> CIRCLING	3260-1	702 (800-1)	4440-3 1882 (1900-3)	NA