

LOC/DME I-VMU 108.7 Chan 24	APP CRS 269°	Rwy Idg TDZE Apt Elev	6001 1064 1080
---	------------------------	-----------------------------	---

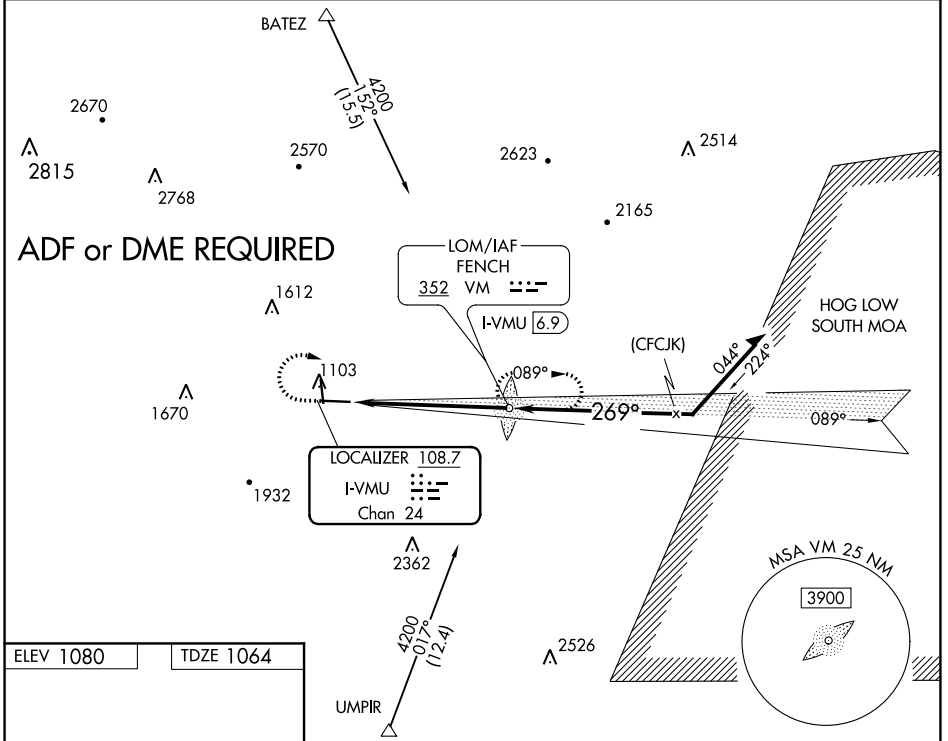
ILS or LOC RWY 27

MENA INTERMOUNTAIN MUNI (MEZ)

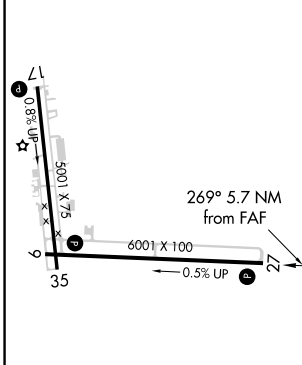
NA Circling Rwy 35 NA at night. ADF Required.

MISSED APPROACH: Climb to 1700 then climbing right turn to 3600 direct FENCH LOM/I-VMU 6.9 DME and hold.

AWOS-3 118.025	MEMPHIS CENTER 126.1 269.0	UNICOM 122.8 (CTAF) 0
--------------------------	--------------------------------------	---------------------------------



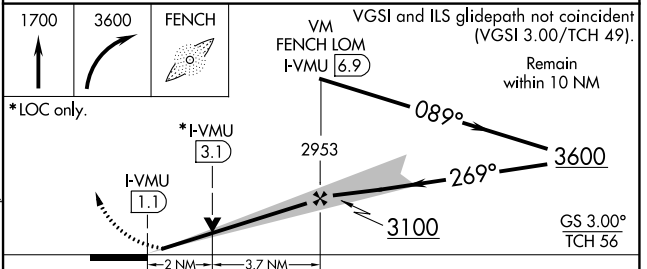
ELEV 1080	TDZE 1064
-----------	-----------



MIRL Rwy 9-27 and 17-35
REIL Rws 9, 27 and 35

FAF to MAP 5.7 NM

Knots	60	90	120	150	180
Min:Sec	5:42	3:48	2:51	2:17	1:54



CATEGORY	A	B	C	D
S-ILS 27	1464-1½ 400 (400-1½)			NA
S-LOC 27	1660-1	596 (600-1)	1660-1⅞ 596 (600-1⅞)	NA
<input checked="" type="checkbox"/> CIRCLING	1840-1 760 (800-1)	2140-1½ 1060 (1100-1½)	2220-3 1140 (1200-3)	NA

SC-1, 22 APR 2021 to 20 MAY 2021

SC-1, 22 APR 2021 to 20 MAY 2021

RNAV (GPS) RWY 17

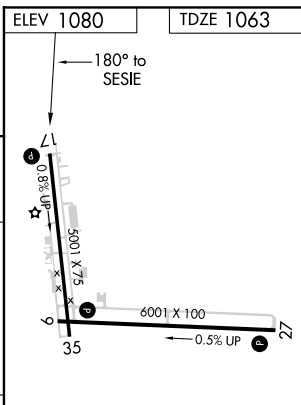
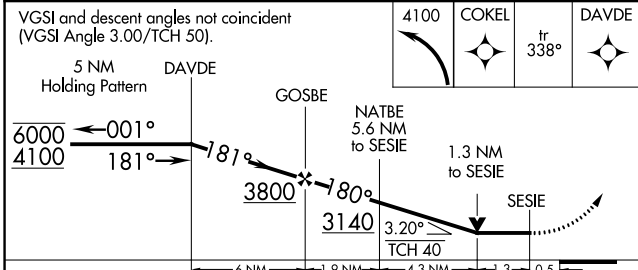
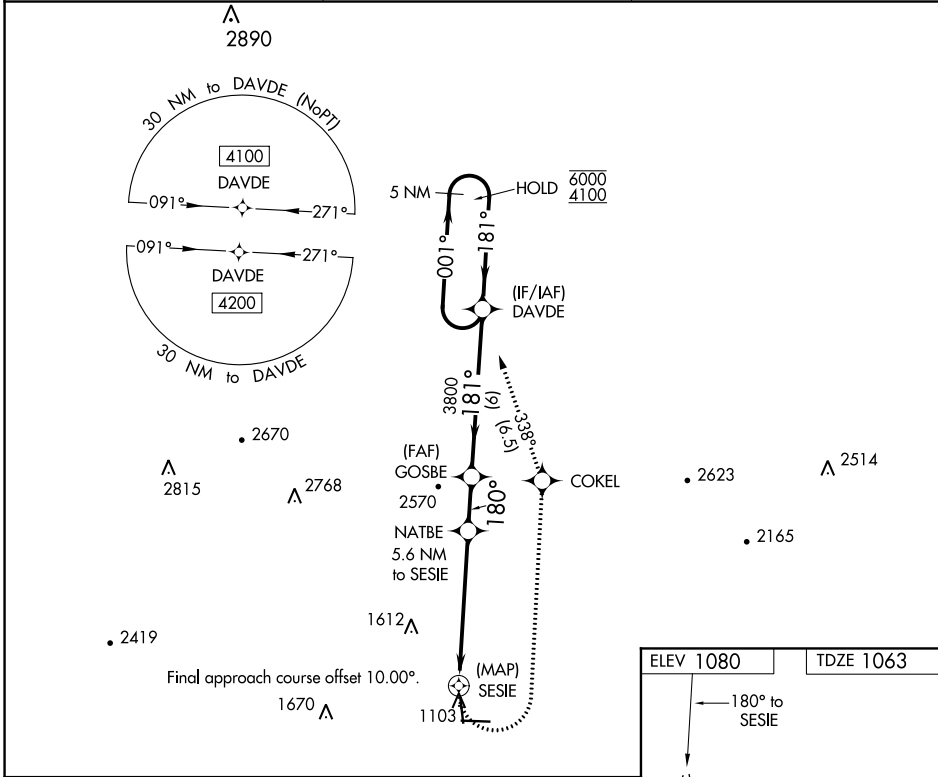
MENA INTERMOUNTAIN MUNI (MEZ)

APP CRS 180°	Rwy Idg 5001
	TDZE 1063
	Apt Elev 1080

RNP APCH.
 ▼ Circling Rwy 35 NA at night.
 ▲ Rwy 17 helicopter visibility reduction below ¼ SM NA.

MISSED APPROACH: Climbing left turn to 4100 direct COKEI and track 338° to DAVDE and hold.

AWOS-3 118.025	MEMPHIS CENTER 126.1 269.0	UNICOM 122.8 (CTAF) 0
--------------------------	--------------------------------------	---------------------------------



CATEGORY	A	B	C	D
LNVA MDA	1660-1	597 (600-1)	1660-1¼ 597 (600-1¼)	NA
CIRCLING	1840-1 760 (800-1)	2140-1½ 1060 (1100-1½)	2220-3 1140 (1200-3)	NA

MIRL Rwy 9-27 and 17-35
 REIL Rwy 9, 27 and 35

SC-1, 22 APR 2021 to 20 MAY 2021

SC-1, 22 APR 2021 to 20 MAY 2021