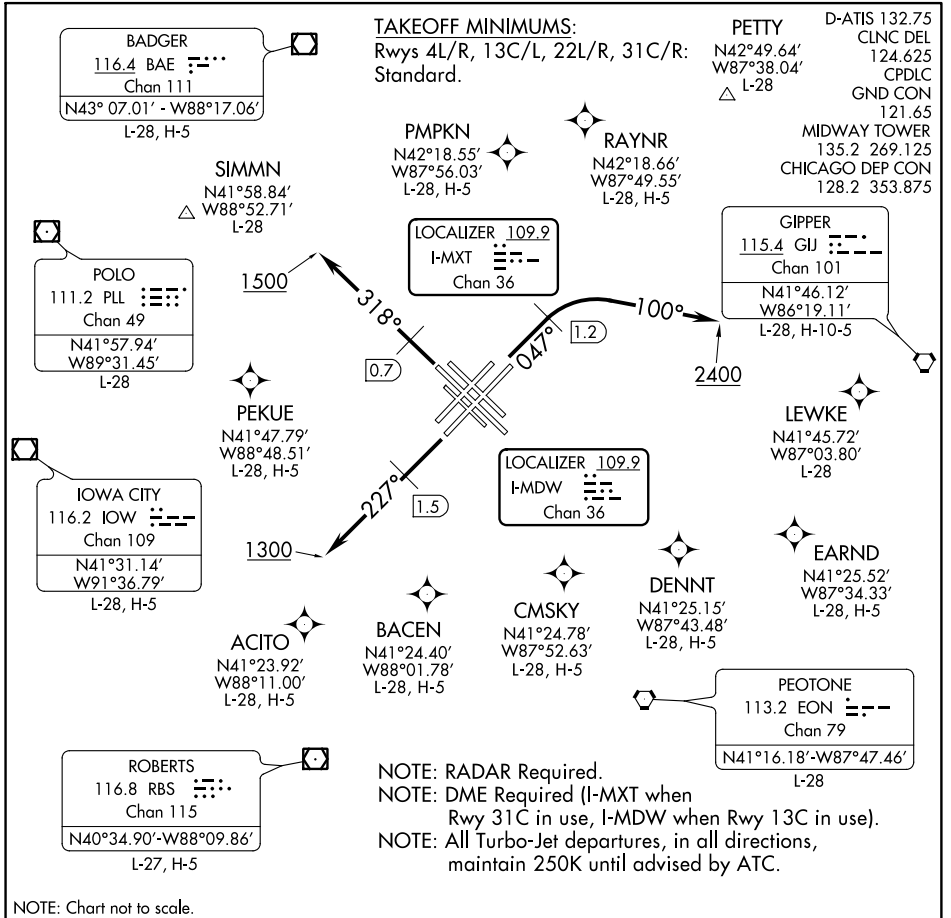


CICERO NINE DEPARTURE

AL-81 (FAA)

CHICAGO MIDWAY INTL (MDW)

CHICAGO, ILLINOIS



EC-3, 24 MAY 2018 to 21 JUN 2018

EC-3, 24 MAY 2018 to 21 JUN 2018

DEPARTURE ROUTE DESCRIPTION

TAKEOFF RWYS 4L/R: Northbound departures assigned headings 360° (CW) thru 080° climb heading 047° to 1.2 DME, then continue climbing right turn heading 100° to 2400, Thence

TAKEOFF RWY 22L: Climb heading 227° to 1.5 DME, then continue climb to 1300. Thence

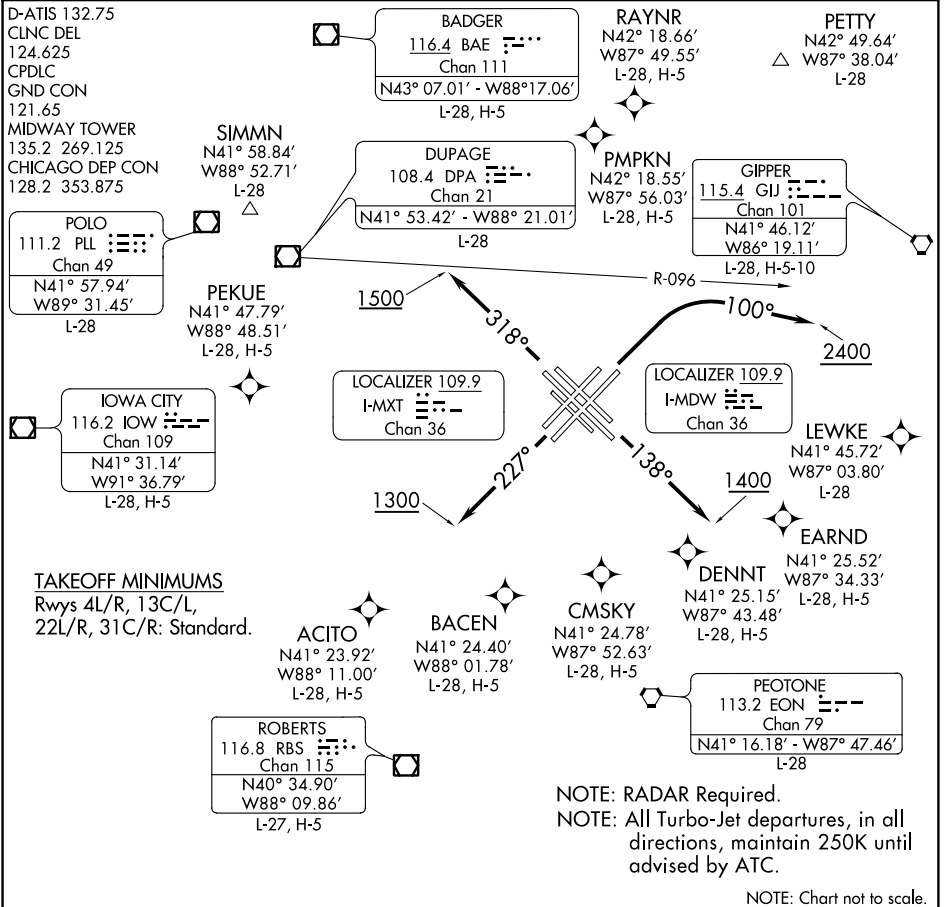
TAKEOFF RWY 31C: Climb heading 318° to 0.7 DME, then continue climb to 1500. Thence

TAKEOFF RWYS 13C/L, 22R, 31R: Climb assigned heading to 1.2 DME. Thence

ALL AIRCRAFT: Expect RADAR vectors to first enroute fix. Maintain 3000 or assigned lower altitude. Expect clearance to requested altitude/flight level 10 (ten) minutes after departure. Complete initially assigned turn within 4 DME.
. . . .on tower assigned heading/vector to assigned altitude.

CICERO NINE DEPARTURE

CHICAGO, ILLINOIS
CHICAGO MIDWAY INTL (MDW)



EC-3, 24 MAY 2018 to 21 JUN 2018

EC-3, 24 MAY 2018 to 21 JUN 2018

DEPARTURE ROUTE DESCRIPTION

ALL AIRCRAFT:

- TAKEOFF RWYS 4L/R:** Northbound departures assigned headings 360° (CW) thru 080°, climbing right turn to 2400 heading 100° before proceeding on course, thence. . . .
- TAKEOFF RWY 13C/13L:** Climb heading 138° to 1400 before turning, thence. . . .
- TAKEOFF RWY 22L/22R:** Climb heading 227° to 1300 before turning, thence. . . .
- TAKEOFF RWY 31C/31R:** Climb heading 318° to 1500 before turning, thence. . . .

DME EQUIPPED AIRCRAFT: Complete initially assigned turn within 4 DME (I-MXT when Rwy 31C in use, I-MDW when Rwy 13C in use). Maintain 3000 or assigned lower altitude, thence. . . .

NON-DME EQUIPPED AIRCRAFT: Complete initially assigned turn south of DPA R-096, maintain 3000 or assigned lower altitude, thence. . . .

. . . .expect RADAR vectors to first enroute fix. Expect clearance to requested altitude/flight level 10 (ten) minutes after departure.