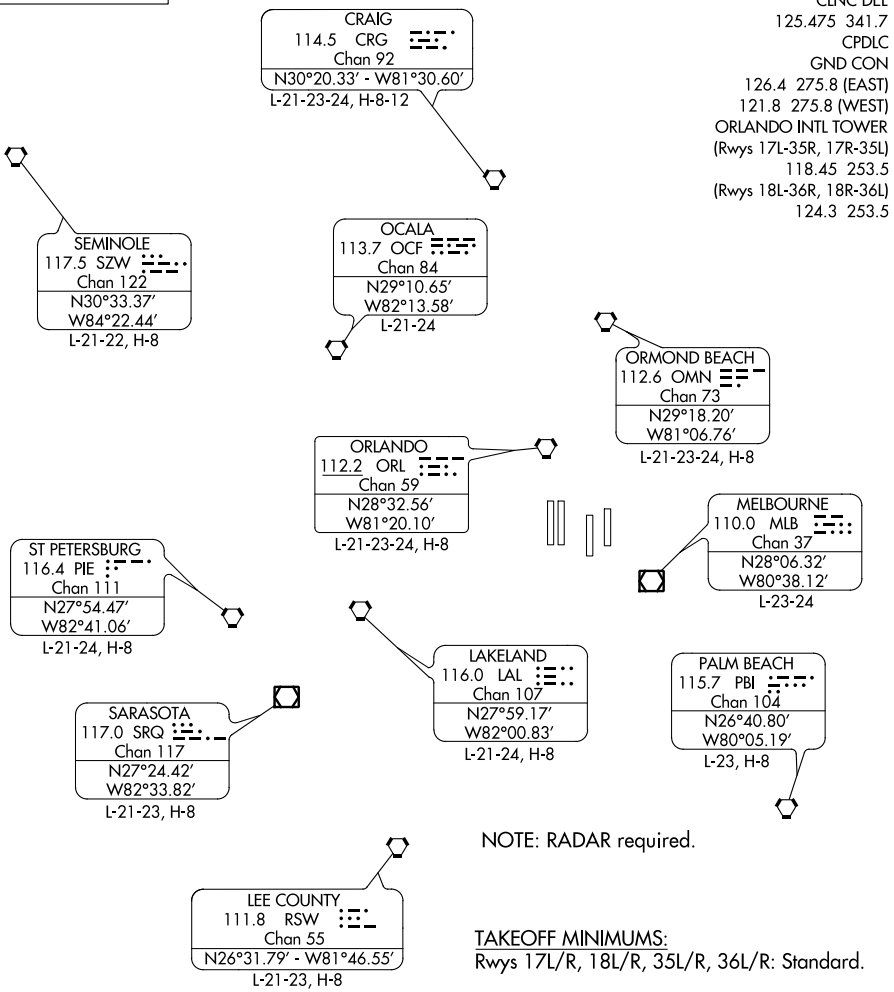


# CITRUS ONE DEPARTURE

**TOP ALTITUDE:  
2000**



D-ATIS DEP  
120.525  
CLNC DEL  
125.475 341.7  
CPDLC  
GND CON  
126.4 275.8 (EAST)  
121.8 275.8 (WEST)  
ORLANDO INTL TOWER  
(Rwys 17L-35R, 17R-35L)  
118.45 253.5  
(Rwys 18L-36R, 18R-36L)  
124.3 253.5

SE-3, 07 DEC 2017 to 04 JAN 2018

SE-3, 07 DEC 2017 to 04 JAN 2018

NOTE: RADAR required.

**TAKEOFF MINIMUMS:**  
Rwys 17L/R, 18L/R, 35L/R, 36L/R: Standard.

NOTE: Chart not to scale.

## DEPARTURE ROUTE DESCRIPTION

**TAKEOFF ALL RWYS:** Climb on heading as assigned for vectors to appropriate fix. Maintain 2000. Expect further clearance to filed altitude/flight level 10 minutes after departure.

# JAGUAR SIX DEPARTURE

ORLANDO, FLORIDA

**TOP ALTITUDE:  
5000**

D-ATIS DEP

120.525

CLNC DEL

125.475 341.7

CPDLC

GND CON

126.4 275.8 (East)

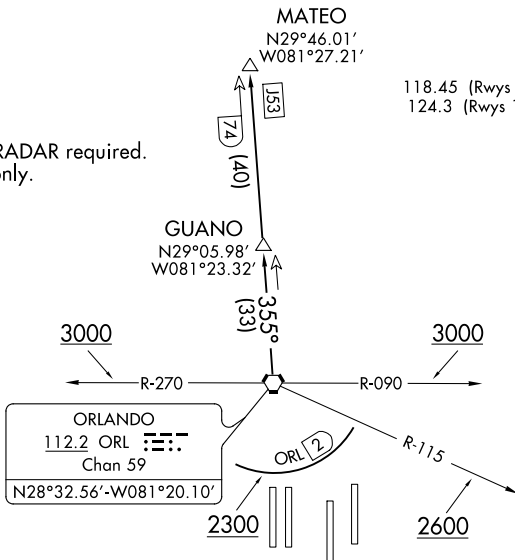
121.8 275.8 (West)

ORLANDO INTL TOWER

118.45 (Rwys 17L-35R, 17R-35L) 253.5

124.3 (Rwys 18L-36R, 18R-36L) 253.5

NOTE: DME and RADAR required.  
NOTE: Turbojets only.



### TAKEOFF MINIMUMS

Rwys 17L/R, 18L/R, 35L/R, 36L/R: Standard.

NOTE: Chart not to scale.



### DEPARTURE ROUTE DESCRIPTION

TAKEOFF RWYS 17L/R, 18L/R: Climb on heading as assigned, thence . . . .

TAKEOFF RWYS 35L/R: Climb on heading as assigned. Cross ORL VORTAC R-115 at or above 2600, cross ORL VORTAC R-090 or R-270 at or above 3000, thence . . . .

TAKEOFF RWYS 36L/36R: Climb on heading as assigned. Cross 2 DME south of ORL VORTAC at or above 2300, cross ORL VORTAC R-090 or R-270 at or above 3000, thence . . . .

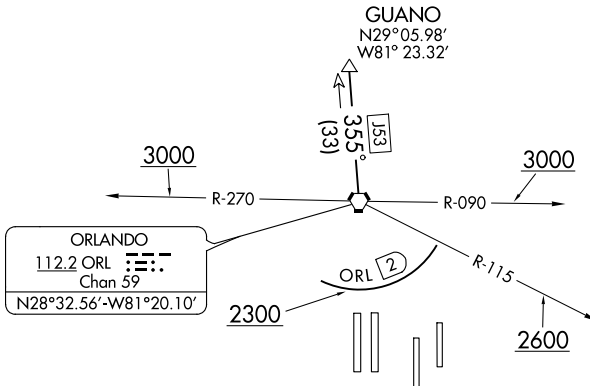
. . . . for vectors to ORL VORTAC R-355 to GUANO, then on ORL VORTAC R-355 to MATEO. Maintain 5000. Expect further clearance to filed altitude/flight level 10 minutes after departure.

# MCCOY TWO DEPARTURE

**TOP ALTITUDE:**  
**5000**

D-ATIS DEP  
120.525  
CLNC DEL  
125.475 341.7  
CPDCL  
GND CON  
126.4 275.8 (East)  
121.8 275.8 (West)  
ORLANDO INTL TOWER  
118.45 (Rwys 17L-35R, 17R-35L) 253.5  
124.3 (Rwys 18L-36R, 18R-36L) 253.5

**TAKEOFF MINIMUMS**  
Rwys 17L/R, 18L/R, 35L/R, 36L/R: Standard.



NOTE: DME and RADAR Required.  
NOTE: Turbojets only.

NOTE: Chart not to scale.



## DEPARTURE ROUTE DESCRIPTION

TAKEOFF RWYS 17L/R, 18L/R: Climb on heading as assigned. Thence...

TAKEOFF RWYS 35L/R, 36L/R: Climb on heading as assigned. Cross 2 DME south of ORL VORTAC at or above 2300, cross ORL VOTRAC R-115 at or above 2600, cross ORL VORTAC R-090 or R-270 at or above 3000, Thence...

...for vectors to ORL VORTAC R-355 to GUANO. Maintain 5000. Expect further clearance to filed altitude/flight level 10 minutes after departure.

# ORLANDO FOUR DEPARTURE

**TOP ALTITUDE:  
5000**

### TAKEOFF MINIMUMS

Rwys 17L/R, 18L/R, 35L/R, 36L/R: Standard.

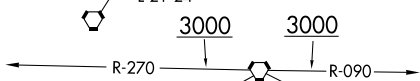
D-ATIS DEP 120.525  
CLNC DEL 125.475 341.7  
CPDLC  
GND CON 126.4 275.8 (East)  
121.8 275.8 (West)  
ORLANDO INTL TOWER  
(Rwys 17L-35R, 17R-35L) 118.45 253.5  
(Rwys 18L-36R, 18R-36L) 124.3 253.5

SEMINOLE  
117.5 SZW  
Chan 122  
N30°33.37'  
W84°22.44'  
L-21-22, H-8

OCALA  
113.7 OCF  
Chan 84  
N29°10.65'  
W82°13.58'  
L-21-24

CRAIG  
114.5 CRG  
Chan 92  
N30°20.33'  
W81°30.60'  
L-21-23-24, H-8-12

ORMOND BEACH  
112.6 OMN  
Chan 73  
N29°18.20'  
W81°06.76'  
L-21-23-24, H-8



ORLANDO  
112.2 ORL  
Chan 59  
N28°32.56'-W81°20.10'

ST PETERSBURG  
116.4 PIE  
Chan 111  
N27°54.47'  
W82°41.06'  
L-21-24, H-8

LAKELAND  
116.0 LAL  
Chan 107  
N27°59.17'  
W82°00.83'  
L-21-24, H-8

MELBOURNE  
110.0 MLB  
Chan 37  
N28°06.32'  
W80°38.12'  
L-23-24

SARASOTA  
117.0 SRQ  
Chan 117  
N27°24.42'  
W82°33.82'  
L-21-23, H-8

LEE COUNTY  
111.8 RSW  
Chan 55  
N26°31.79'-W81°46.55'  
L-21-23, H-8

PALM BEACH  
115.7 PBI  
Chan 104  
N26°40.80'  
W80°05.19'  
L-23, H-8

NOTE: RADAR required.  
NOTE: Takeoff Rwy 35L/R, 36L/R: DME required.

NOTE: Chart not to scale.

### DEPARTURE ROUTE DESCRIPTION

**TAKEOFF RWYS 17L/R, 18L/R:** Climb on heading as assigned for vectors to filed/assigned route. Thence. . . .

**TAKEOFF RWYS 35L/R, 36L/R:** Climb on heading as assigned for vectors to filed/assigned route. Cross 2 DME south of ORL VORTAC at or above 2300, cross ORL VORTAC R-115 at or above 2600, cross ORL VORTAC R-090 or R-270 at or above 3000. Thence. . . .

. . . .maintain 5000, expect further clearance to filed altitude/flight level 10 minutes after departure.

SE-3: 07 DEC 2017 to 04 JAN 2018

SE-3: 07 DEC 2017 to 04 JAN 2018