

ILS or LOC RWY 23

TAMPA, FLORIDA
 LOC I-GBZ
111.7

APCH CRS
229°
 Rwy Idg **11,421**
 TDZE **14**
 Appr Elev **14**

ALSf1 [USAF]



† MISSED APPROACH: Climb to 1600 via MCF R-223 to MILNE and hold.

RADAR or DME required.
 ** When AIS inop, increase RVR to 40' vis to ½ mile.
 *** When AIS in CD, increase CAT AB RVR to 55' vis to 1 mile. CAT CDE vis to 1/8 miles.

TOWER **120.175 294.7**
 GND CON **118.575 275.8**

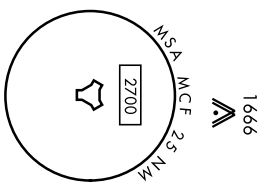
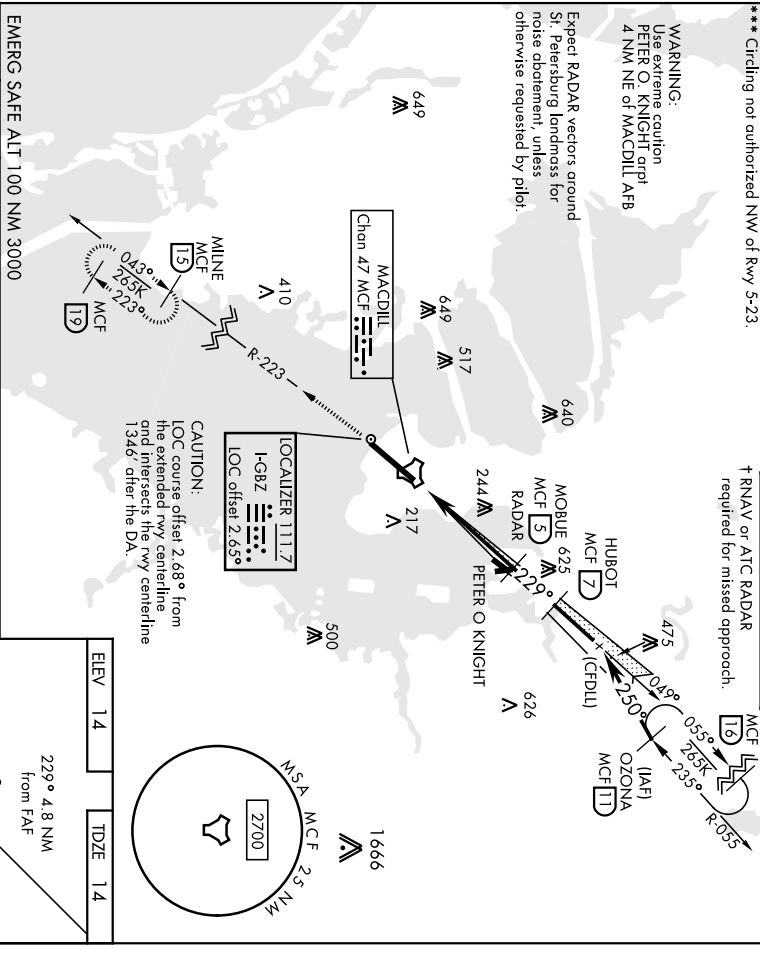
*** Circling not authorized NW of Rwy 5-23.

† RNAV or ATC RADAR required for missed approach.

WARNING:

Use extreme caution
 Expect extreme caution
 FETTER OF KNIGHT area
 4 NM NE of MACDILL AFB

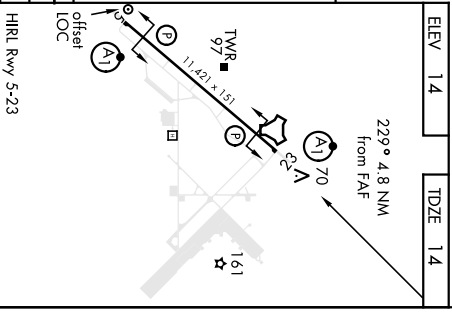
Expect RADAR vectors around
 St. Petersburg Landsmass for
 noise abatement, unless
 otherwise requested by pilot.



CAUTION:
 LOC course offset 2.68° from
 the extended rwy centerline
 and intersects the rwy centerline
 1.346' offset the DA.

EMERG SAFE ALT 100 NM 3000

1 600 MILNE MCF R-223	MOBUE HUBROT (GPDLL) OZONA R-053				
TACAN FANED R-223	RADAR 1600 1700 1700				
0.4	GS 3.00° TCH 54				
4.3 NM					
CATEGORY	A B C D E				
S-ILS 23 *	264/24	250	(300-½)		
S-LOC 23 ***	440/24	426 (500-½)	440/40	426 (500-¾)	
CIRCLING ****	500-1	540-1	540-1½	580-2	1020-3
	486 (500-1)	526 (600-1)	526 (600-1½)	566 (600-2)	1006(1000-3)



LOC FAF to MAP 4.3 NM					
Knots	60	90	120	150	180
Min:Sec	4:18	2:52	2:09	1:43	1:26

TAMPA, FLORIDA

27° 51' N-82° 31' W

Orig 31DEC20

MACDILL AFB (KMCF)
 ILS or LOC RWY 23

TAMPA, FLORIDA

ILS or LOC RWY 5

MACDILL AFB (KMCF)

AL-418 [USAF]

LOC I-MCF <u>109.5</u>	APCH CRS 044°	Rwy Idg TDZE Appt Elev	11,421 10 14
RADAR or DME required.			ALSF-1 A1

*When ALS inop, increase RVR to 40, vis to ¾ mile.
**When ALS inop, increase CAT AB RVR to 55, vis to 1 mile; CAT CDE RVR to 60, vis to 1 ½ miles.

ATIS
139.825 270.1

TAMPA APP CON
124.95 354.0

TOWER
120.175 294.7

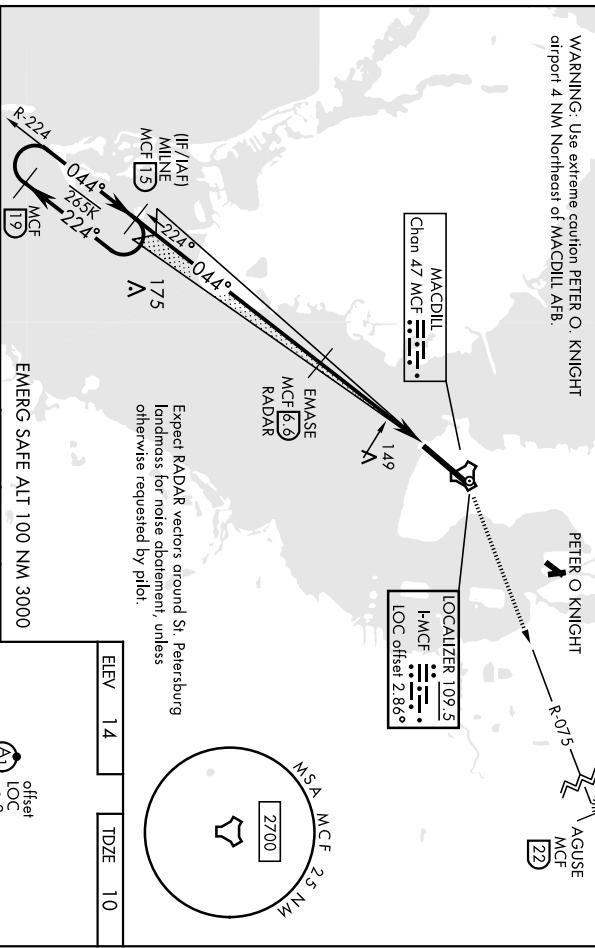
GND CON
118.575 275.8

***Circling not authorized NW of Rwy 5-23.

† RNAV or ATC RADAR required for missed approach.

CAUTION:
LOC course offset 2.86° from the extended rwy centerline and intersects the rwy centerline 1834' after the DA.

WARNING: Use extreme caution PETER O. KNIGHT airport 4 NM Northeast of MACDILL AFB.

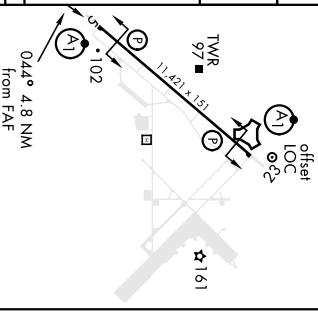


Expect RADAR vectors around St. Petersburg landmarks for noise abatement, unless otherwise requested by pilot.

ELEV	14	TDZE	10
------	----	------	----

CATEGORY	A	B	C	D	E
	15	6/9	19	29	23
S-LOC 5**	420/24	410 (500-½)	250	420/40	410 (500-¾)
CIRCLING***	500-1	540-1	540-1½	580-2	1020-3
	486 (500-1)	526 (600-1)	526 (600-1½)	566 (600-2)	1006(1100-3)

HIRL Rwy 5-23	LOC FAE to MAF 4.3 NM				
Knots	60	90	120	150	180
Mins:Sec	4:18	2:52	2:09	1:43	1:26



EMERG SAFE ALT 100 NM 3000

TAMPA, FLORIDA
Orig 31DEC20

MACDILL AFB (KMCF)
ILS or LOC RWY 5

TAMPA, FLORIDA

RNAV (GPS) RWY 23

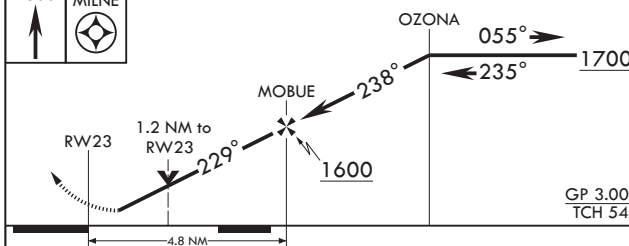
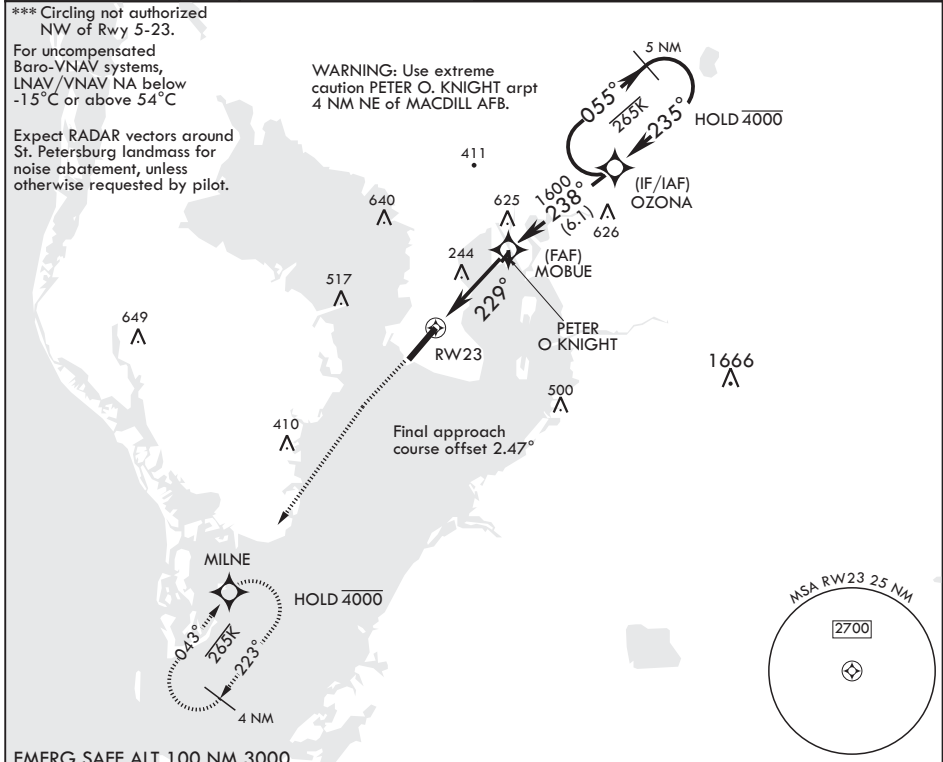
APCH CRS	Rwy Idg	11,421
229°	TDZE	14
	Arprt Elev	14

AL-418 (USAF)

MACDILL AFB (KMCF)

RNP APCH	ALSF-1	MISSED APPROACH: Climb to 1600, then climbing left turn to 1600 direct MILNE and hold.
<p>* When ALS inop, increase vis to 1 1/4 miles. ** When ALS inop, increase CAT AB RVR to 55, vis to 1 mile; CAT CDE vis to 1 1/4 miles.</p>		

ATIS 133.825 270.1	TAMPA APP CON 124.95 354.0	TOWER 120.175 294.7	GND CON 118.575 275.8
------------------------------	--------------------------------------	-------------------------------	---------------------------------



TAMPA, FLORIDA 27°51'N - 82°31'W MACDILL AFB (KMCF)

Orig 31DEC20

RNAV (GPS) RWY 23

SE-3, 16 JUN 2022 to 14 JUL 2022

SE-3, 16 JUN 2022 to 14 JUL 2022

TAMPA, FLORIDA

RNAV (GPS) RWY 5

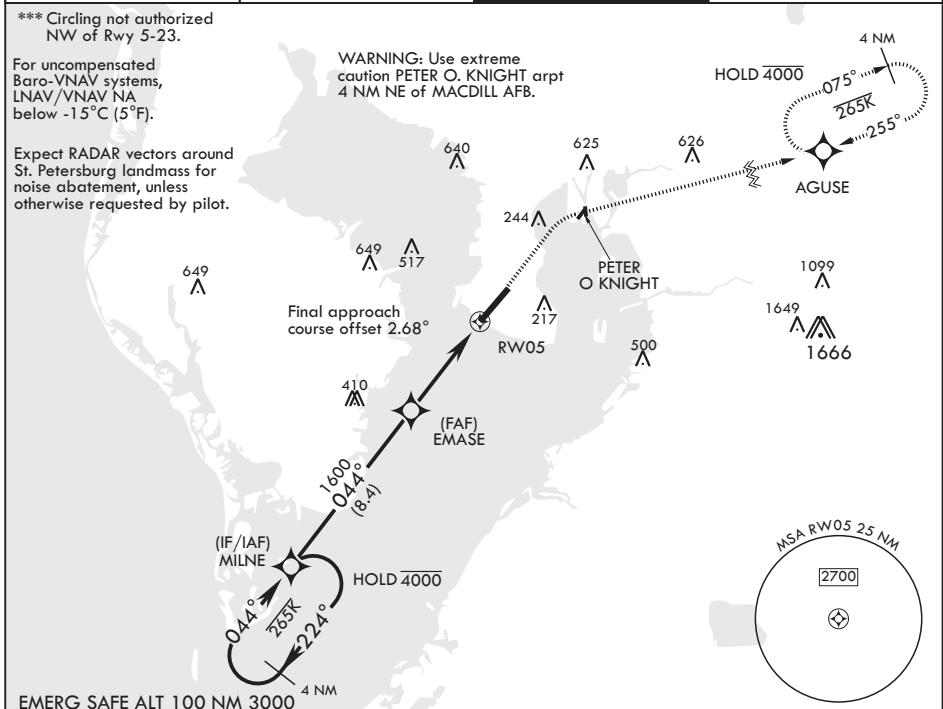
APCH CRS	Rwy Idg	11,421
044°	TDZE	10
	Arprt Elev	14

AL-418 (USAF)

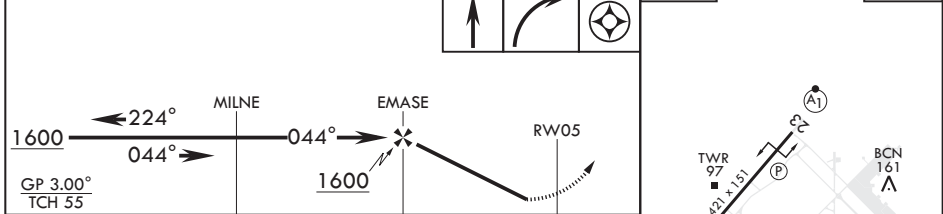
MACDILL AFB (KMCF)

RNP APCH	ALSF-1	MISSED APPROACH: Climb to 1700 then climbing right turn to 2700 direct AGUSE and hold.
<p>* When ALS inop, increase CAT AB RVR to 40, vis to 3/4 mile; CAT CDE RVR to 45, vis to 7/8 mile. ** When ALS inop, increase CAT AB RVR to 55, vis to 1 mile, CAT CDE RVR to 60, vis to 1 1/8 miles.</p>		

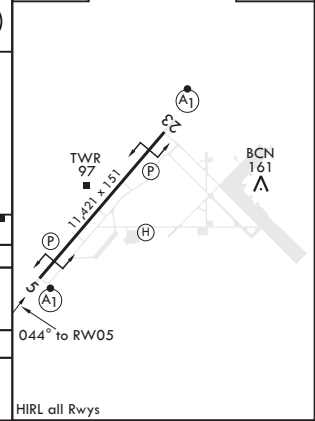
ATIS 133.825 270.1	TAMPA APP CON 124.95 354.0	TOWER 120.175 294.7	GND CON 118.575 275.8
------------------------------	--------------------------------------	-------------------------------	---------------------------------



EMERG SAFE ALT 100 NM 3000	1700	2700	AGUSE	ELEV 14	TDZE 10
----------------------------	------	------	-------	---------	---------



CATEGORY	A	B	C	D	E
LNAV/VNAV DA*	260/24 250 (300-½)	264/24 254 (300-½)	272/24 262 (300-½)	283/24 273 (300-½)	304/24 294 (300-½)
LNAV MDA**	420/24 410 (500-½)	420/40	410	500-¾	
CIRCLING***	500-1 486 (500-1)	540-1 526 (600-1)	540-1½ 526 (600-½)	580-2 566 (600-2)	1020-3 1006 (1100-3)



TAMPA, FLORIDA 27°51'N - 82°31'W MACDILL AFB (KMCF)

Orig 31DEC20

RNAV (GPS) RWY 5

SE-3, 16 JUN 2022 to 14 JUL 2022

SE-3, 16 JUN 2022 to 14 JUL 2022

TAMPA, FLORIDA

TACAN RWY 23

TACAN MCF Chan 47	APCH CRS 240°	Rwy ldg TDZE Arprt Elev	11,421 14 14
-------------------	---------------	-------------------------	--------------------

AL-418 (USAF)

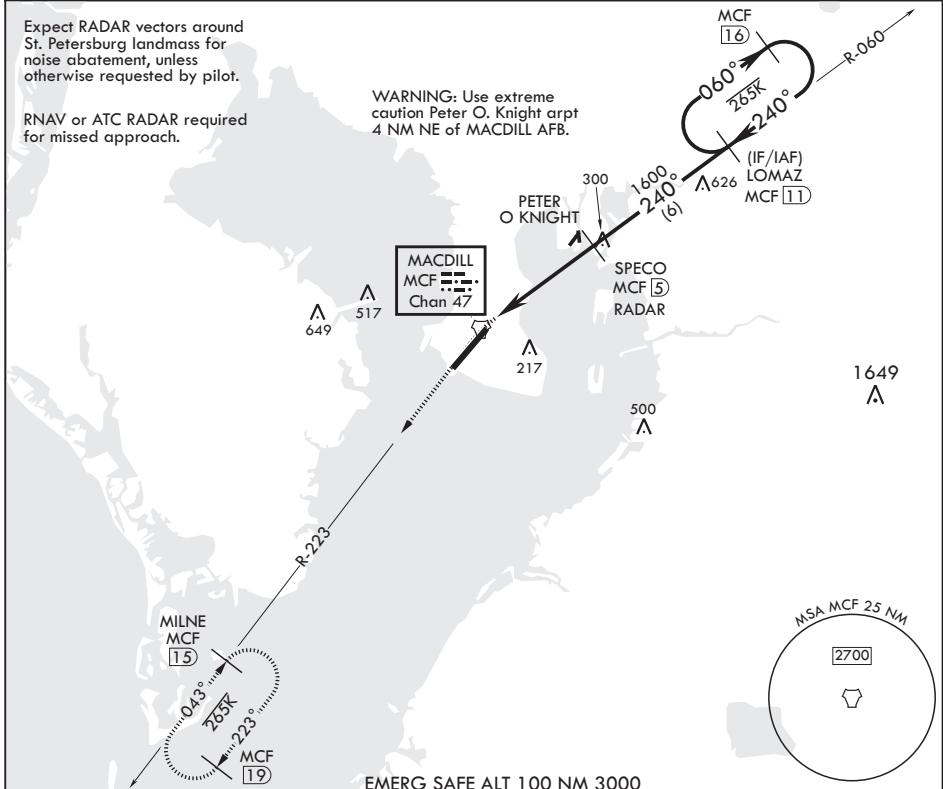
MACDILL AFB (KMCF)

* When ALS inop, increase CAT AB RVR to 55, vis to 1 mile; CAT CDE vis to 1 1/4 miles.
 ** Circling not authorized NW of Rwy 5-23.



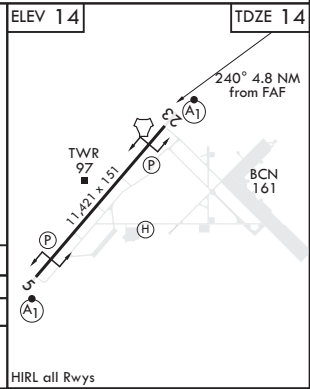
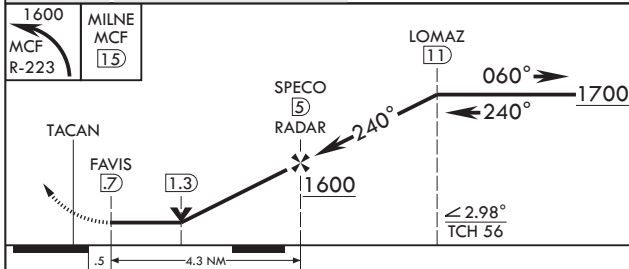
MISSED APPROACH: Climb to 1600 via MCF TACAN R-223 to MILNE and hold.

ATIS 133.825 270.1	TAMPA APP CON 124.95 354.0	TOWER 120.175 294.7	GND CON 118.575 275.8
-----------------------	-------------------------------	------------------------	--------------------------



SE-3, 16 JUN 2022 to 14 JUL 2022

SE-3, 16 JUN 2022 to 14 JUL 2022



CATEGORY	A	B	C	D	E
S-23*	440/24 426 (500-½)		440/40 426		(500-¾)
CIRCLING**	520-1 486 (600-1)	540-1 526 (600-1)	540-1½ 526 (600-1½)	580-2 566 (600-2)	1020-3 1006 (1100-3)

TAMPA, FLORIDA
 Orig 31DEC20

27°51'N - 82°31'W

MACDILL AFB (KMCF)

TACAN RWY 23

TAMPA, FLORIDA

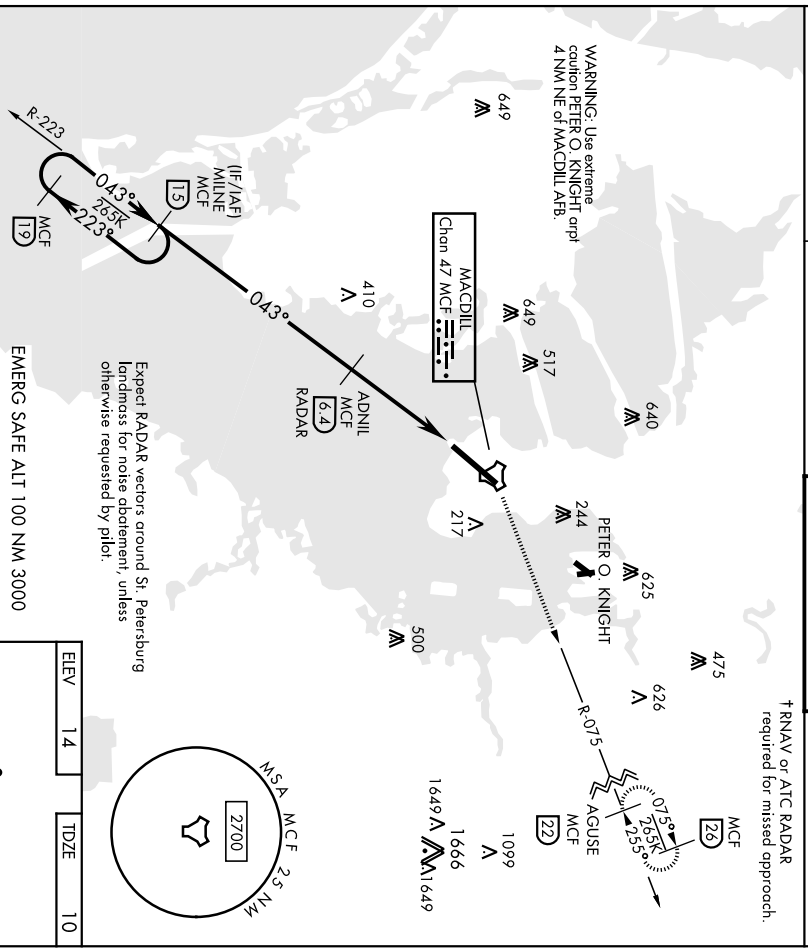
TACAN RWY 5

MACDILL AFB (KMCF)

TACAN MCF Chon 47	APCH CRS 043°	Rwy Idg TDZE Appt Elev 11,421 10 14	AL-418 [USAF]	ALSF-1 	† MISSED APPROACH: Climb to 2700 via MCF R-075 to 22 DME and hold. Cross 8 DME at 1700.
* When ALS Inop, increase CAT AB RVR to 55, vis to 1 mile; CAT CDE RVR to 60, vis to 1½ miles. ** Circling not authorized NW of Rwy 5-23.					

ATIS 139.825 270.1	TAMPA APP CON 124.95 354.0	TOWER 120.175 294.7	GND CON 118.575 275.8
------------------------------	--------------------------------------	-------------------------------	---------------------------------

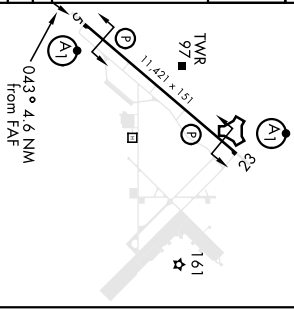
† RNAV or ATC RADAR required for missed approach.



Expect RADAR vectors around St. Petersburg
landmass for noise abatement, unless
otherwise requested by pilot.

EMERG SAFE ALT 100 NM 3000

CATEGORY	A	B	C	D	E
S-5*	420/24 410 (500-½)	420/40 410 (500-¾)	420/40 410 (500-¾)		
CIRCLING**	500-1 488 (500-1)	540-1 526 (600-1)	540-1½ 526 (600-1½)	580-2 566 (600-2)	1020-3 1006(1100-3)



TAMPA, FLORIDA
Orig 31DEC20
27°51'N-82°31'W
MACDILL AFB (KMCF)
TACAN RWY 5