

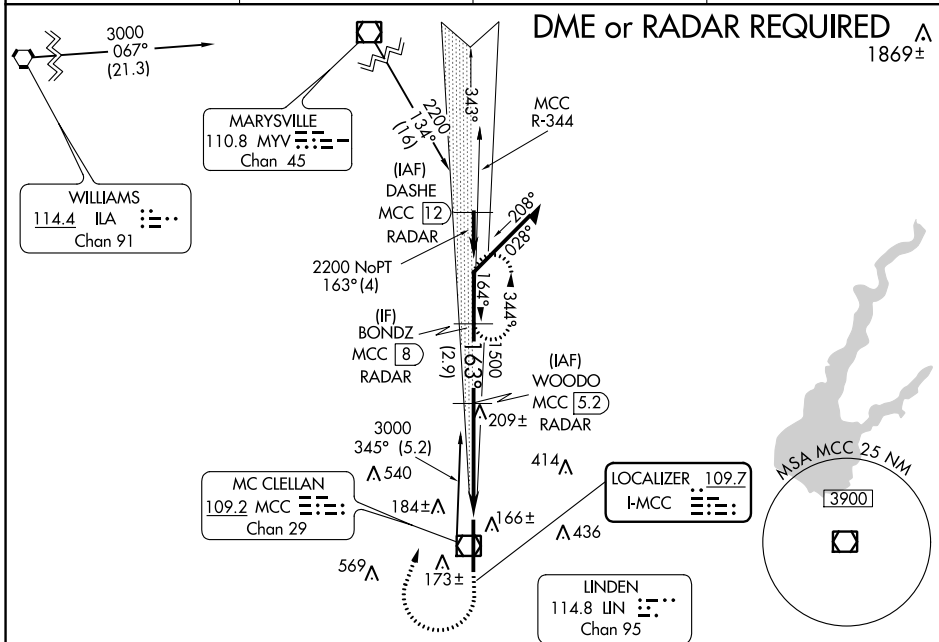
LOC I-MCC <b>109.7</b>	APP CRS <b>163°</b>	Rwy Idg <b>10599</b> TDZE <b>77</b> Apt Elev <b>77</b>
---------------------------	------------------------	--

# ILS or LOC RWY 16

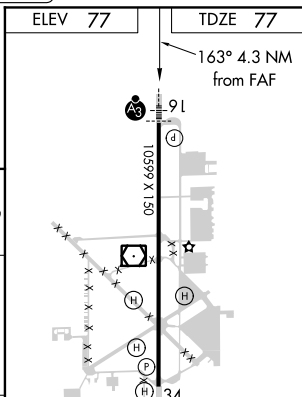
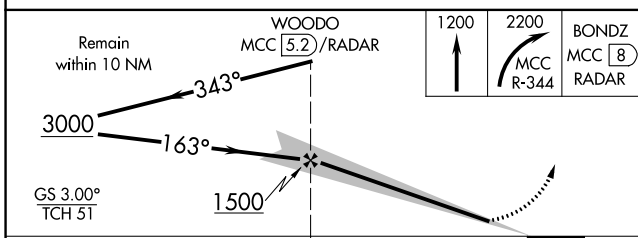
MC CLELLAN AIRFIELD (MCC)

<b>NA</b> DME from MCC VOR/DME. If local altimeter setting is not received, use Sacramento Intl altimeter setting and increase all DH/MDAs 40 feet.	SSALR	MISSED APPROACH: Climb to 1200 then climbing right turn to 2200 via MCC VOR/DME R-344 to BONDZ/MCC 8 DME/RADAR and hold.
---	-------	--

AWOS-3 <b>125.975</b>	NORCAL APP CON <b>127.4 317.5</b>	CINC DEL <b>119.825</b>	UNICOM <b>122.975 (CTAF)</b>
--------------------------	--------------------------------------	----------------------------	---------------------------------



ELEV 77	TDZE 77
---------	---------



CATEGORY	A	B	C	D
S-ILS 16		277-1/2	200 (200-1/2)	
S-LOC 16		460-1/2	383 (400-1/2)	460-3/4 383 (400-3/4)
CIRCLING		NA		

FAF to MAP 4.3 NM					
Knots	60	90	120	150	180
Min:Sec	4:18	2:52	2:09	1:43	1:26

SW-2, 12 SEP 2019 to 10 OCT 2019

SW-2, 12 SEP 2019 to 10 OCT 2019

VOR/DME MCC	APP CRS	Rwy Idg	<b>10599</b>
<b>109.2</b>	<b>333°</b>	TDZE	<b>72</b>
Chan <b>29</b>		Apt Elev	<b>77</b>

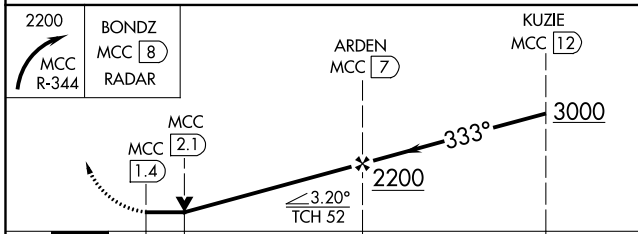
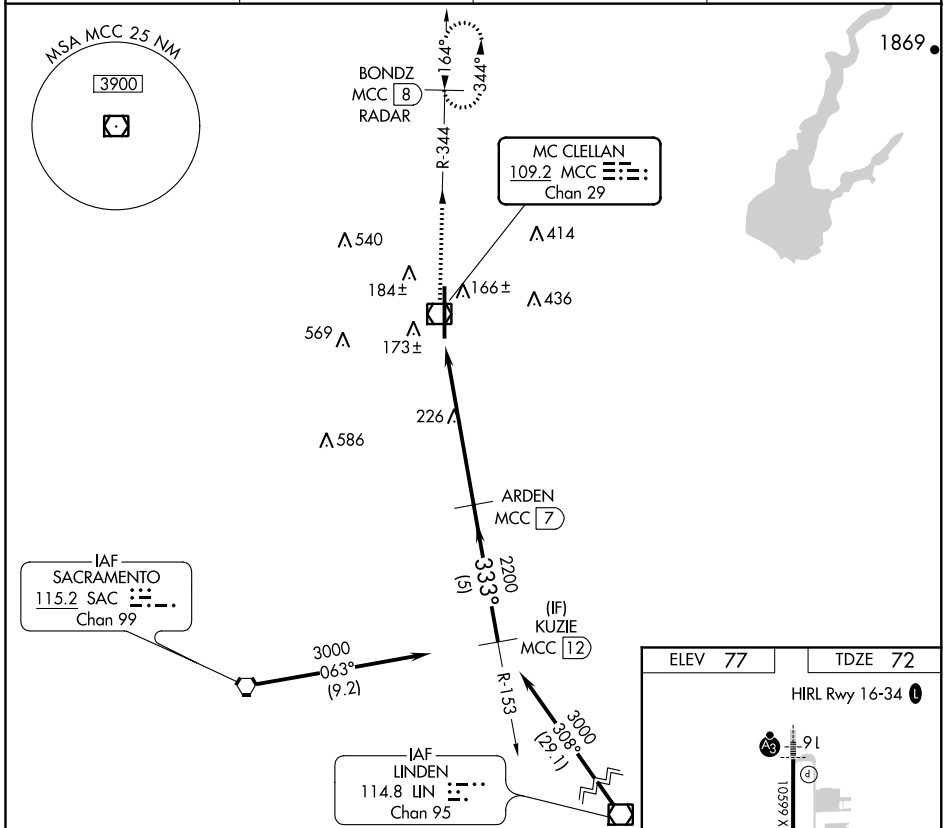
# VOR/DME RWY 34

MC CLELLAN AIRFIELD (MCC)

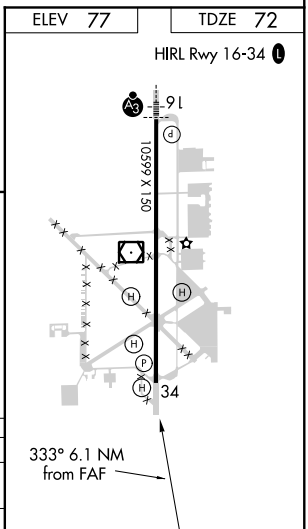
**NA** VDP NA when using Sacramento Intl altimeter setting. When local altimeter setting not received, use Sacramento Intl altimeter setting and increase all MDAs 40 feet.

**MISSED APPROACH:** Climbing right turn to 2200 via MCC R-344 to BONDZ/MCC 8 DME/RADAR and hold.

AWOS-3 <b>125.975</b>	NORCAL APP CON <b>127.4 317.5</b>	CLNC DEL <b>119.825</b>	UNICOM <b>122.975 (CTAF)</b>
--------------------------	--------------------------------------	----------------------------	---------------------------------



CATEGORY	A	B	C	D
S-34	500-1	428 (500-1)	500-1½ 428 (500-1½)	500-1½ 428 (500-1½)
CIRCLING	NA			



SW-2, 12 SEP 2019 to 10 OCT 2019

SW-2, 12 SEP 2019 to 10 OCT 2019