

AIRPORT DIAGRAM

MC CLELLAN AIRFIELD (MCC)
SACRAMENTO, CALIFORNIA

AL-357 (FAA)

AWOS-3
125.975
CTAF/UNICOM
122.975
CLNC DEL
119.825

1000
X 200

FIELD
ELEV
77

38°41'N

RWY 16-34
S-155, D-300, 2S-175,
2D-500, 2D/D1-620, C5-840



JANUARY 2020
ANNUAL RATE OF CHANGE
0.1° W

FIRE STATION

SW-2, 22 APR 2021 to 20 MAY 2021

SW-2, 22 APR 2021 to 20 MAY 2021

10599 X 150

38°40'N

FBO

ELEV
70

1000
X 200

38°39'N

121°25'W

121°24'W

AIRPORT DIAGRAM


SACRAMENTO, CALIFORNIA
MC CLELLAN AIRFIELD (MCC)

LOC I-MCC 109.7	APP CRS 163°	Rwy Idg 10599 TDZE 77 Apt Elev 77
---------------------------	------------------------	--

ILS or LOC RWY 16

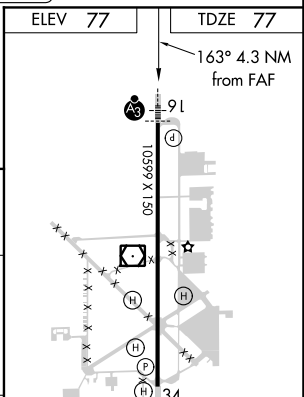
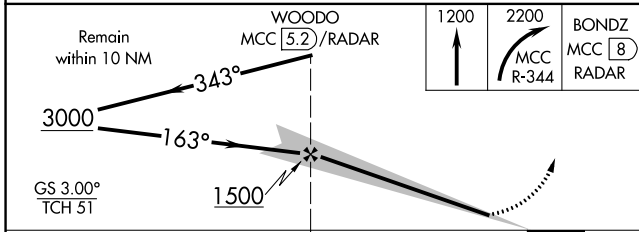
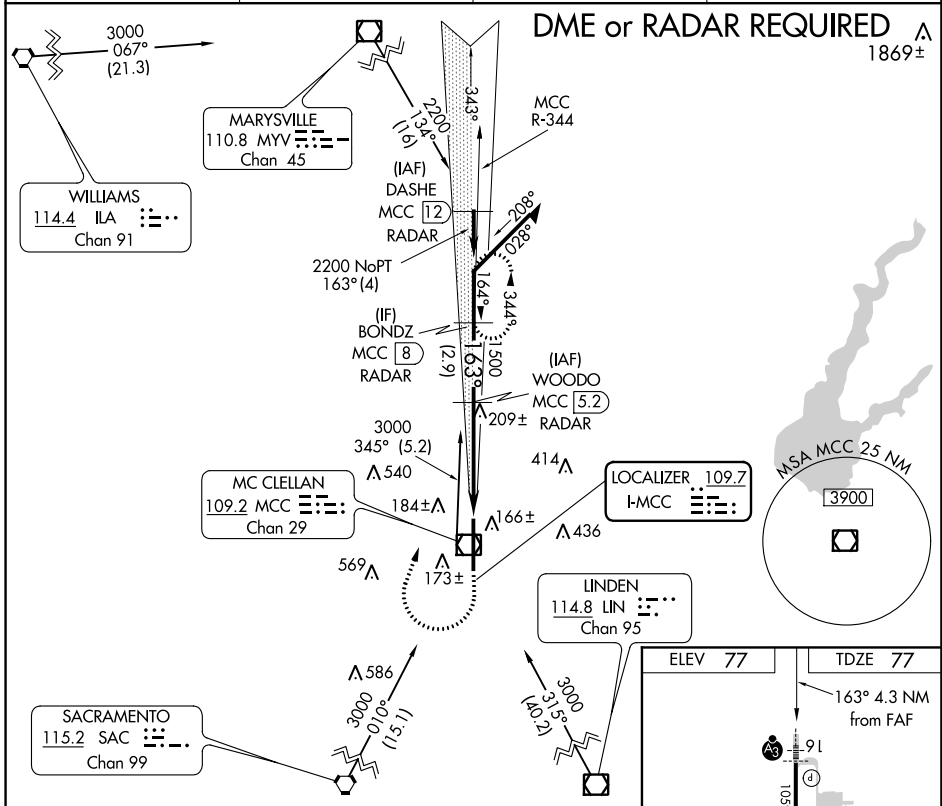
MC CLELLAN AIRFIELD (MCC)

NA DME from MCC VOR/DME. If local altimeter setting is not received, use Sacramento Intl altimeter setting and increase all DH/MDAs 40 feet.

SSALR 

MISSED APPROACH: Climb to 1200 then climbing right turn to 2200 via MCC VOR/DME R-344 to BONDZ/MCC 8 DME/RADAR and hold.

AWOS-3 125.975	NORCAL APP CON 127.4 317.5	CINC DEL 119.825	UNICOM 122.975 (CTAF) 
--------------------------	--------------------------------------	----------------------------	---



CATEGORY	A	B	C	D
S-ILS 16		277- $\frac{1}{2}$	200 (200- $\frac{1}{2}$)	
S-LOC 16		460- $\frac{1}{2}$	383 (400- $\frac{1}{2}$)	460- $\frac{3}{4}$ 383 (400- $\frac{3}{4}$)
CIRCLING		NA		

FAF to MAP 4.3 NM					
Knots	60	90	120	150	180
Min:Sec	4:18	2:52	2:09	1:43	1:26

SW-2, 22 APR 2021 to 20 MAY 2021

SW-2, 22 APR 2021 to 20 MAY 2021

VOR/DME MCC 109.2 Chan 29	APP CRS 333°	Rwy Idg 10599 TDZE 72 Apt Elev 77
---	------------------------	--

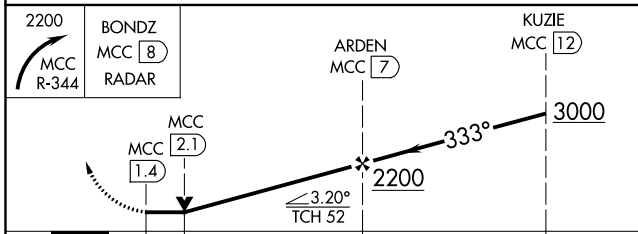
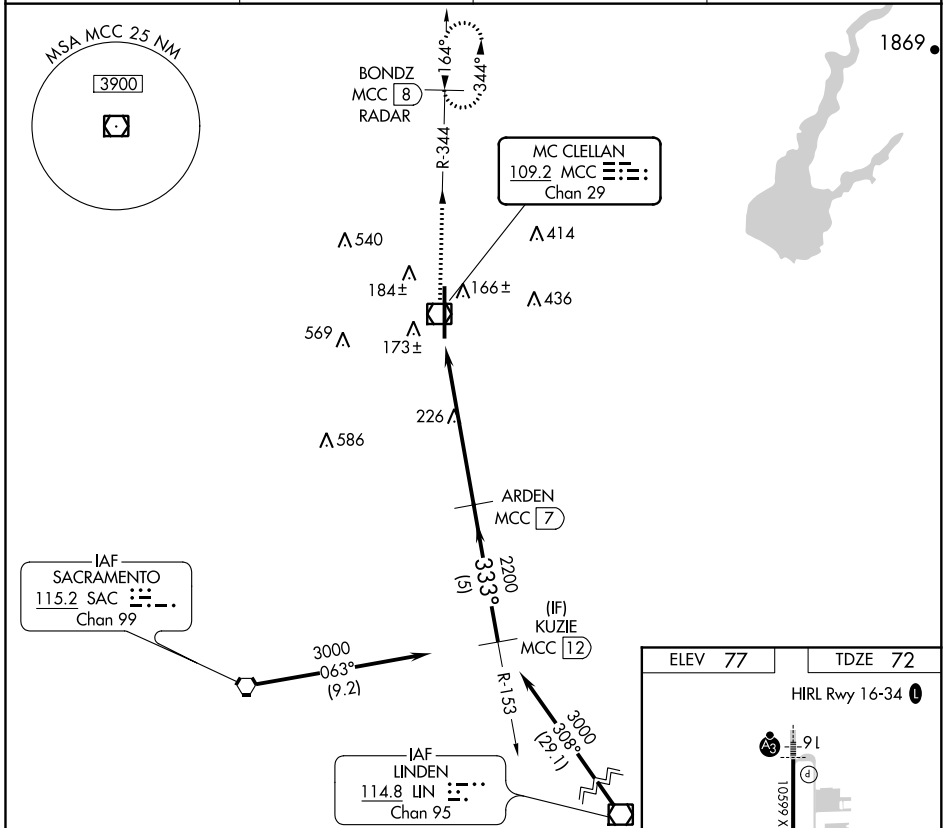
VOR/DME RWY 34

MC CLELLAN AIRFIELD (MCC)

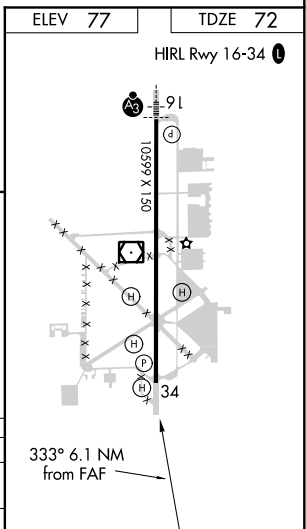
NA VDP NA when using Sacramento Intl altimeter setting. When local altimeter setting not received, use Sacramento Intl altimeter setting and increase all MDAs 40 feet.

MISSED APPROACH: Climbing right turn to 2200 via MCC R-344 to BONDZ/MCC 8 DME/RADAR and hold.

AWOS-3 125.975	NORCAL APP CON 127.4 317.5	CLNC DEL 119.825	UNICOM 122.975 (CTAF) 0
--------------------------	--------------------------------------	----------------------------	-----------------------------------



CATEGORY	A	B	C	D
S-34	500-1	428 (500-1)	500-1½ 428 (500-1½)	500-1½ 428 (500-1½)
CIRCLING	NA			



SW-2, 22 APR 2021 to 20 MAY 2021

SW-2, 22 APR 2021 to 20 MAY 2021