

WAAS CH 56621 W13A	APP CRS 129°	Rwy Idg TDZE 4691 867 Apt Elev 867
----------------------------------------	------------------------	------------------------------------------------------------------------

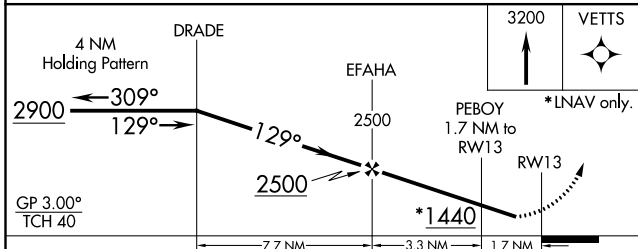
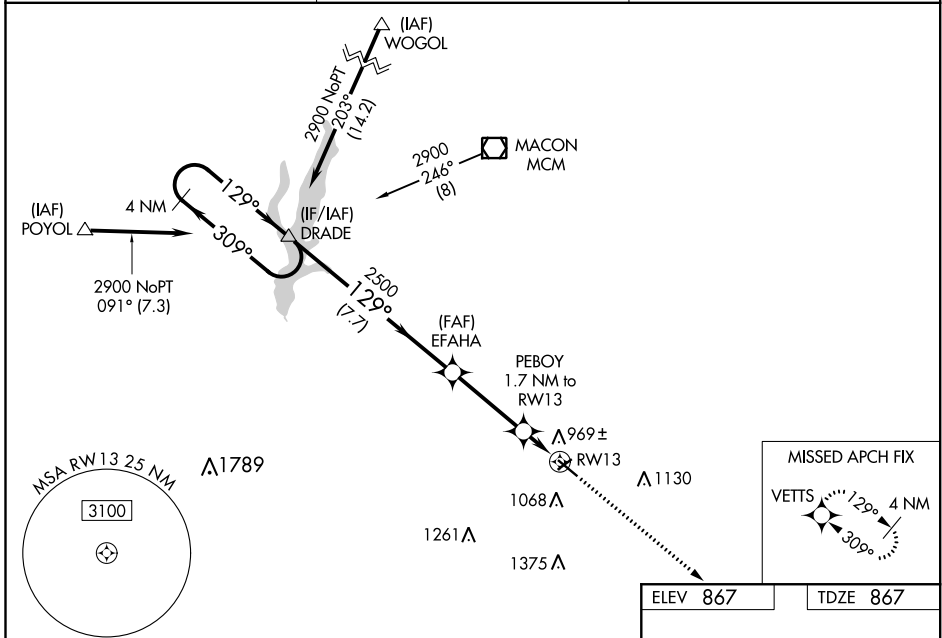
RNAV (GPS) RWY 13

OMAR N BRADLEY (MBY)

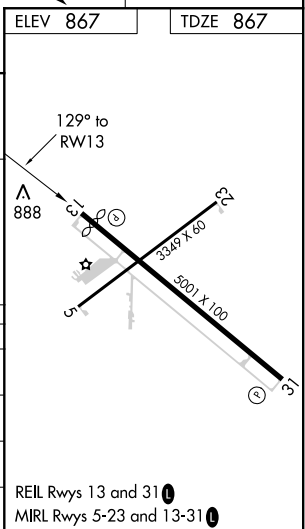
NA Circling to Rwy 5 NA at night. Baro-VNAV NA when using Columbia altimeter setting. For uncompensated Baro-VNAV systems, LNAV/VNAV NA below -16°C (4°F) or above 54°C (130°F). When VGSi inop, procedure NA at night. DME/DME RNP-0.3 NA. Visibility reduction by helicopters NA. When local altimeter setting not received, use Columbia altimeter setting and increase all DA 95 feet and all MDA 100 feet, increase LPV visibility 1/8 mile all Cats, LNAV/VNAV visibility 1/4 mile all Cats, LNAV Cat C visibility 3/8 mile and Circling Cat C visibility 1/4 mile.

MISSED APPROACH:
Climb to 3200 direct VETTS and hold.

AWOS-3PT 120.025	KANSAS CITY CENTER 125.25 235.975	UNICOM 122.7 (CTAF) ①
----------------------------	---------------------------------------------	---------------------------------



CATEGORY	A	B	C	D
LPV DA	1117-1	250 (300-1)		NA
LNAV/VNAV DA	1142-1	275 (300-1)		NA
LNAV MDA	1220-1	353 (400-1)		NA
CIRCLING	1420-1	553 (600-1)	1480-1 3/4 613 (700-1 3/4)	NA



NC-3, 20 MAY 2021 to 17 JUN 2021

NC-3, 20 MAY 2021 to 17 JUN 2021

REIL Rws 13 and 31 ①
MIRL Rws 5-23 and 13-31 ①

WAAS CH 61321 W31A	APP CRS 309°	Rwy Idg TDZE Apt Elev	5001 867 867
----------------------------------------	------------------------	-----------------------------	-----------------------------------------

RNAV (GPS) RWY 31

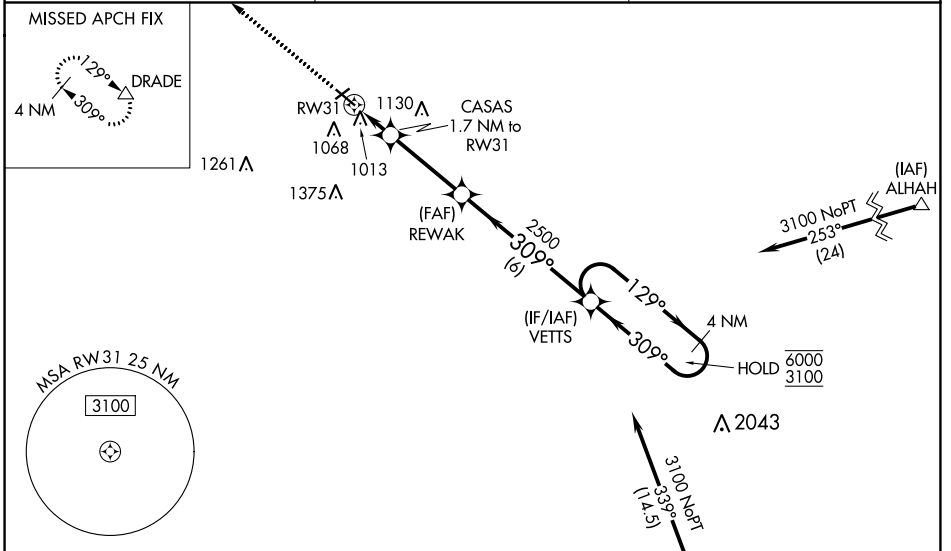
OMAR N BRADLEY (MBY)

RNP APCH.

NA Circling to Rwy 5, 23 NA at night. Rwy 31 helicopter visibility reduction below 3/4 SM NA. Baro-VNAV NA when using Columbia altimeter setting. For uncompensated Baro-VNAV systems, LNAV/VNAV NA below -16°C or above 54°C. VDP NA when using Columbia altimeter setting. When local altimeter setting not received, use Columbia altimeter setting: increase LPV DA to 1212 feet and all visibilities 1/8 SM; increase LNAV/VNAV DA to 1278 feet and all visibilities 1/4 SM; increase all MDA 100 feet and visibility Cat C 1/4 SM.

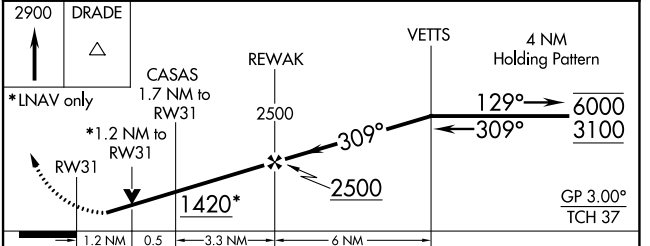
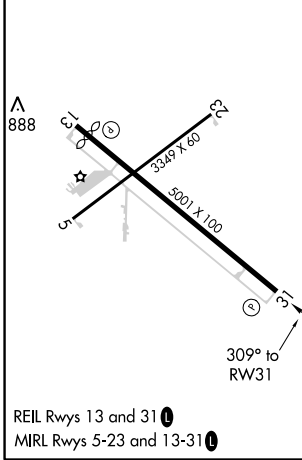
MISSED APPROACH: Climb to 2900 direct DRADE and hold.

AWOS-3PT 120.025	KANSAS CITY CENTER 125.25 235.975	UNICOM 122.7 (CTAF) 0
----------------------------	---------------------------------------------	---------------------------------



ELEV 867	TDZE 867
-----------------	-----------------

Procedure NA for arrival on HLV VORTAC airway radials 270 CW 036.



CATEGORY	A	B	C	D
LPV DA	1117-7/8	250 (300-7/8)		NA
LNAV/VNAV DA	1183-7/8	316 (400-7/8)		NA
LNAV MDA	1280-1	413 (500-1)	1280-1 1/8 413 (500-1 1/8)	NA
CIRCLING	1420-1	553 (600-1)	1480-1 3/4 613 (700-1 3/4)	NA

NC-3, 20 MAY 2021 to 17 JUN 2021

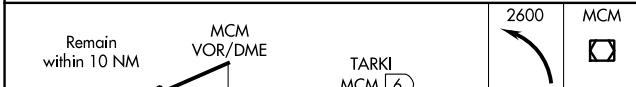
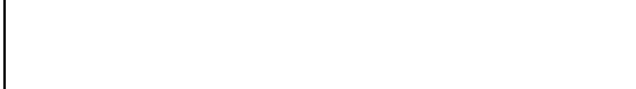
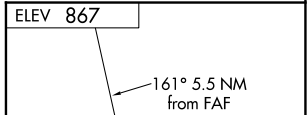
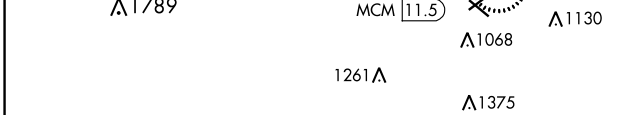
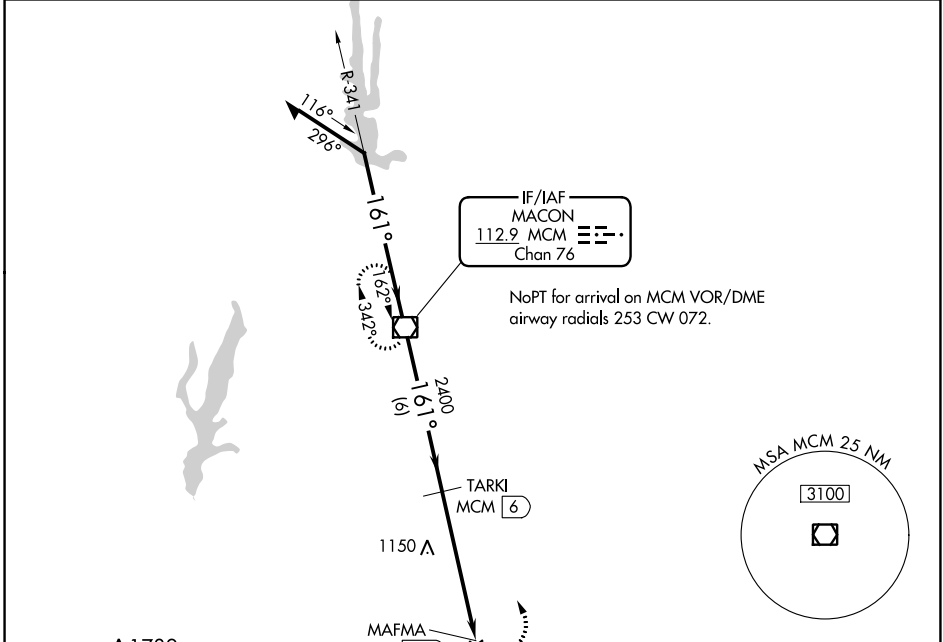
NC-3, 20 MAY 2021 to 17 JUN 2021

VOR/DME MCM 112.9 Chan 76	APP CRS 161°	Rwy Idg TDZE Apt Elev	N/A N/A 867
-----------------------------------------------	------------------------	-----------------------------	----------------------------------------

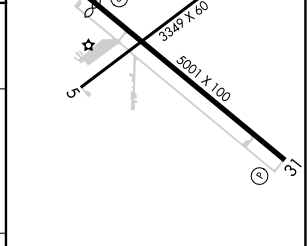
VOR/DME-A
OMAR N BRADLEY (M^BY)

<p>▼ Circling to Rwy 5 NA at night. When local altimeter setting not received, use Columbia altimeter setting and increase all MDA 100 feet and visibility Cat C ¼ mile. Visibility reduction by helicopters NA.</p> <p>▲ NA</p>	<p>MISSED APPROACH: Climbing left turn to 2600 direct MCM VOR/DME and hold.</p>
------------------------------------------------------------------------------------------------------------------------------------------------------------------------------------------------------------------------------------------------	----------------------------------------------------------------------------------------

AWOS-3PT 120.025	KANSAS CITY CENTER 125.25 235.975	UNICOM 122.7 (CTAF) 0
----------------------------	---------------------------------------------	---------------------------------



CATEGORY	A	B	C	D
CIRCLING	1420-1	553 (600-1)	1480-1¾ 613 (700-1¾)	NA



REIL Rwys 13 and 31	0
MIRL Rwys 5-23 and 13-31	0

NC-3, 20 MAY 2021 to 17 JUN 2021

NC-3, 20 MAY 2021 to 17 JUN 2021