

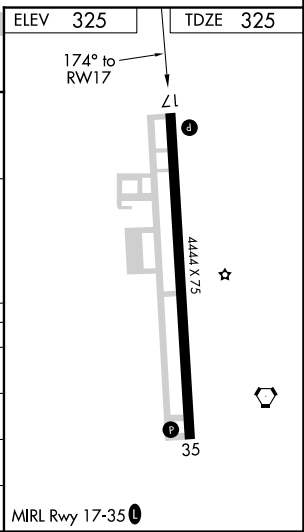
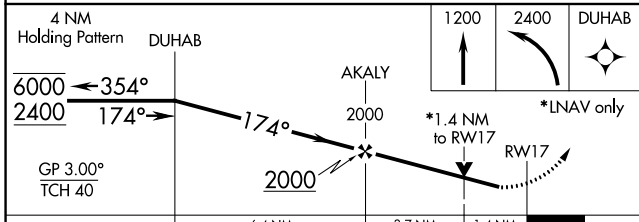
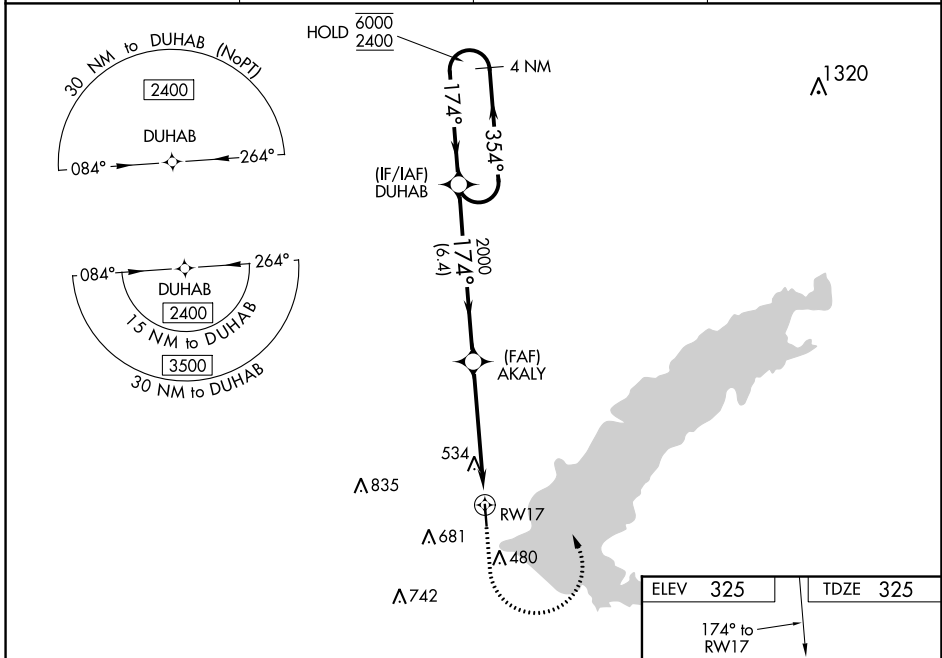
WAAS CH 69231 W17A	APP CRS 174°	Rwy Idg TDZE 325 Apt Elev 325	4444
--	------------------------	---	-------------

RNAV (GPS) RWY 17

BRUCE CAMPBELL FIELD (MBO)

RNP APCH.	<p>▼ Baro-VNAV and VDP NA when using Jackson-Medgar Wiley Evers Intl altimeter setting. ▲ Rwy 17 helicopter visibility reduction below 3/4 SM NA. For uncompensated Baro-VNAV systems, LNAV/VNAV NA below -15°C or above 54°C. When local altimeter setting not received, use Jackson-Medgar Wiley Evers Intl altimeter setting and increase all DA 21 feet and all MDA 40 feet, and increase LNAV/VNAV visibility 1/8 SM, and Circling Cats C/D visibility 1/2 mile.</p>	MISSED APPROACH: Climb to 1200 then climbing left turn to 2400 direct DUHAB and hold.
-----------	--	---

AWOS-3PT 119.125	JACKSON APP CON ★ 123.9 317.7	CLNC DEL 125.9	UNICOM 122.8 (CTAF) 0
----------------------------	---	--------------------------	---------------------------------



CATEGORY	A	B	C	D
LPV DA	600-7/8 275 (300-7/8)			
LNAV/VNAV DA	832-1 3/8 507 (600-1 1/8)			
LNAV MDA	800-1 475 (500-1)	800-1 3/8 475 (500-1 3/8)		
CIRCLING	820-1 495 (500-1)	840-1 515 (600-1)	1040-2 715 (800-2)	1040-2 1/4 715 (800-2 1/4)

SC-4, 02 DEC 2021 to 30 DEC 2021

SC-4, 02 DEC 2021 to 30 DEC 2021

WAAS CH 72631 W35A	APP CRS 354°	Rwy Idg 4444 TDZE 324 Apt Elev 325
--	------------------------	---

RNAV (GPS) RWY 35

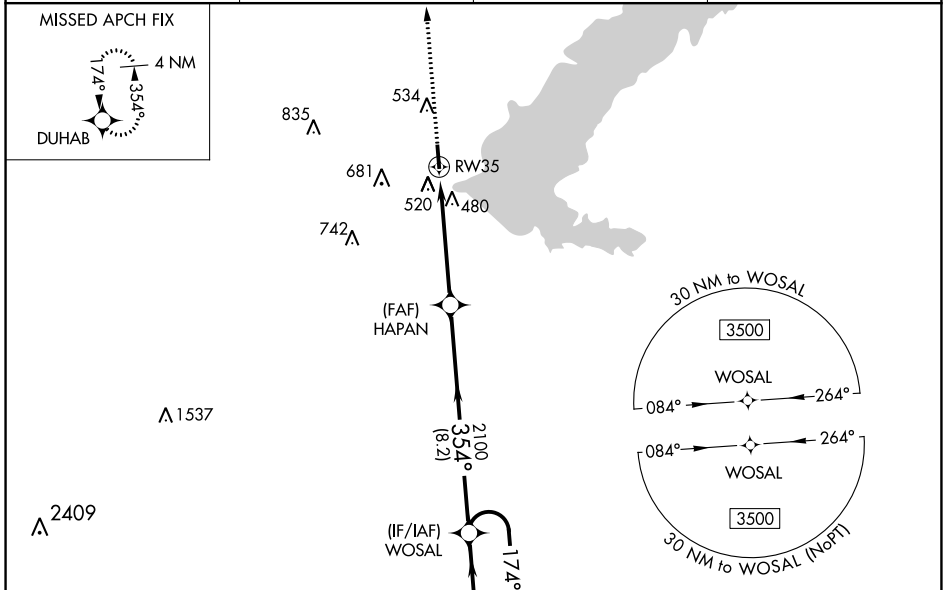
BRUCE CAMPBELL FIELD (MBO)

RNP APCH.

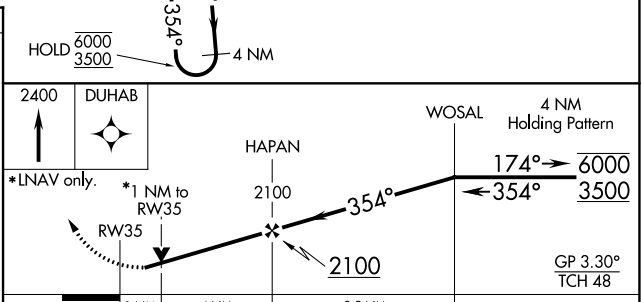
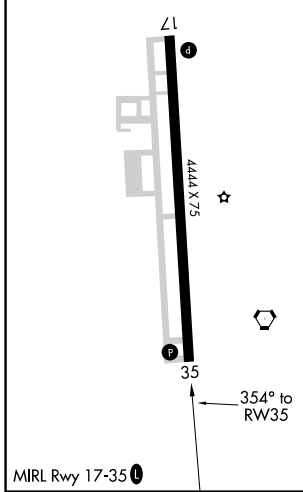
Baro-VNAV and VDP NA when using Jackson-Medgar Wiley Evers Intl altimeter setting.
 RWY 35 helicopter visibility reduction below 3/4 SM NA. For uncompensated Baro-VNAV systems, LNAV/VNAV NA below -15°C or above 54°C. When local altimeter setting not received, use Jackson-Medgar Wiley Evers Intl altimeter setting and increase all DA 21 feet and visibility 1/8 SM, increase all MDA 40 feet and Circling Cat C/D visibility 1/4 SM.

MISSED APPROACH: Climb to 2400 direct DUHAB and hold.

AWOS-3PT 119.125	JACKSON APP CON ★ 123.9 317.7	CLNC DEL 125.9	UNICOM 122.8 (CTAF) 0
----------------------------	---	--------------------------	---------------------------------



ELEV 325	TDZE 324
-----------------	-----------------



CATEGORY	A	B	C	D
LPV DA		643-7/8	319 (400-7/8)	
LNAV/VNAV DA		750-1/4	426 (500-1/4)	
LNAV MDA	780-1	456 (500-1)	780-1 3/8	456 (500-1 3/8)
C CIRCLING	820-1 495 (500-1)	840-1 515 (600-1)	1040-2 715 (800-2)	1040-2 1/4 715 (800-2 1/4)

SC-4, 02 DEC 2021 to 30 DEC 2021

SC-4, 02 DEC 2021 to 30 DEC 2021

VORTAC MHZ 113.2 Chan 79	APP CRS 167°	Rwy Idg TDZE Apt Elev	4444 325 325
--	------------------------	-----------------------------	---

VOR RWY 17

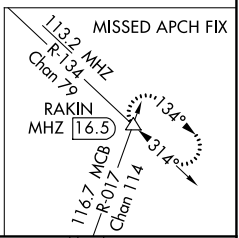
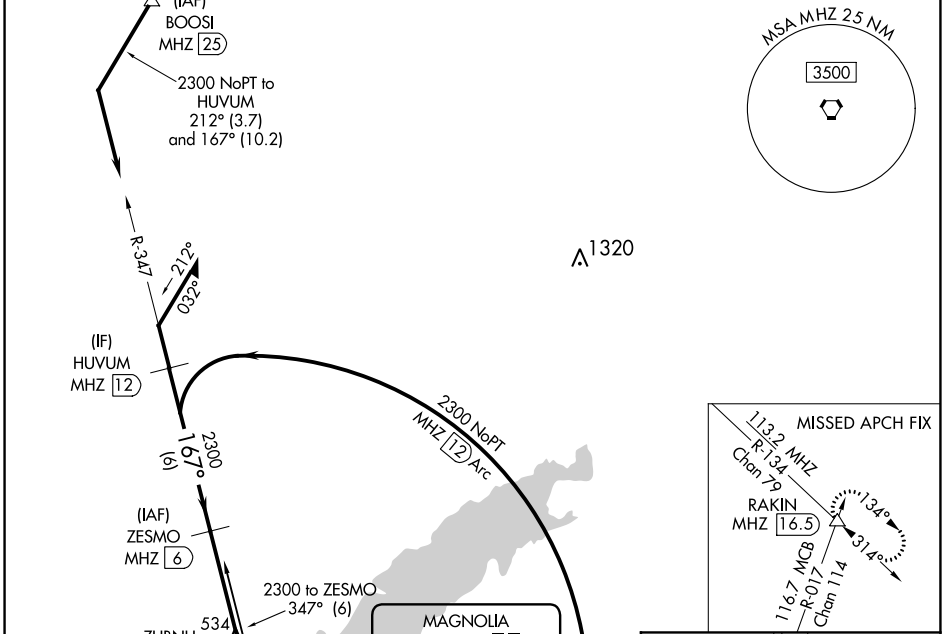
BRUCE CAMPBELL FIELD (MBO)

DME required.

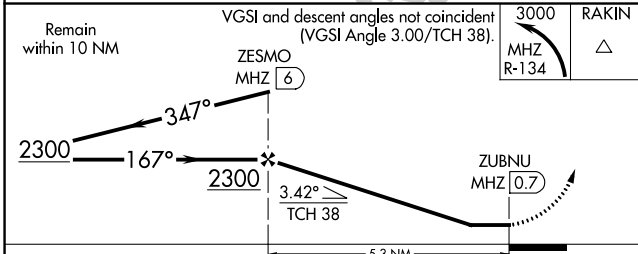
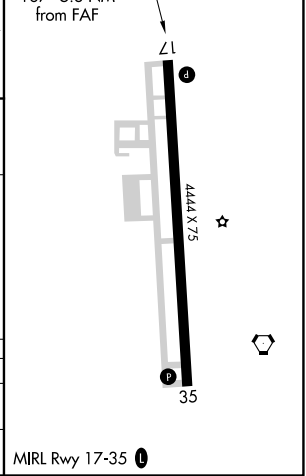
⚠ Rwy 17 helicopter visibility reduction below 1 SM NA. When local altimeter setting not received, use Jackson-Medgar Wiley Evers Intl altimeter setting and increase all MDA 40 feet, and Circling Cts C/D ¼ SM. Straight-in Rwy 17 NA at night, Circling Rwy 17 NA at night.

MISSED APPROACH: Climbing left turn to 3000 on MHZ VORTAC R-134 to RAKIN INT/MHZ 16.5 DME.

AWOS-3PT 119.125	JACKSON APP CON ★ 123.9 317.7	CLNC DEL 125.9	UNICOM 122.8 (CTAF) 0
----------------------------	---	--------------------------	---------------------------------



ELEV 325	TDZE 325
----------	----------



CATEGORY	A	B	C	D
S-17	800-1	475 (500-1)	800-1⅓	475 (500-1⅓)
C CIRCLING	820-1 495 (500-1)	840-1 515 (600-1)	1040-2 715 (800-2)	1040-2¼ 715 (800-2¼)

SC-4, 02 DEC 2021 to 30 DEC 2021

SC-4, 02 DEC 2021 to 30 DEC 2021