

NDB LX Y 329	APP CRS 328°	Rwy Idg TDZE Apt Elev N/A N/A 544
------------------------	------------------------	---

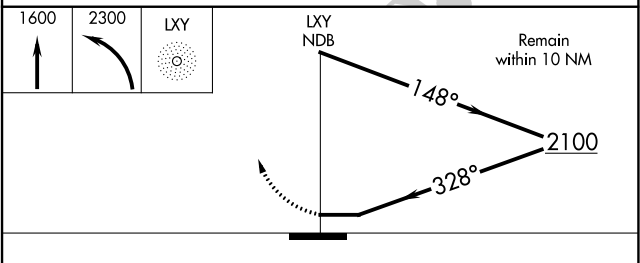
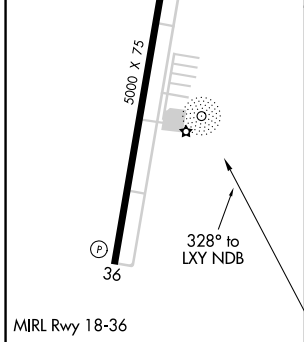
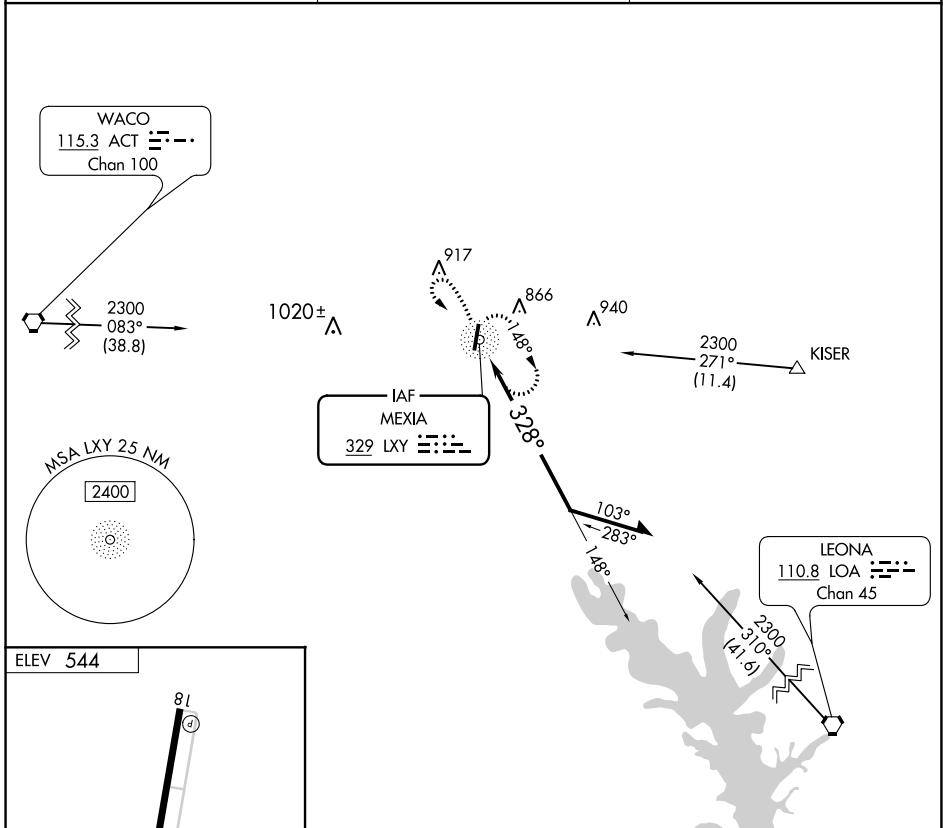
NDB-A

MEXIA-LIMESTONE COUNTY (LXY)

NA Obtain local altimeter setting on CTAF; when not received, use Waco Rgnl altimeter setting and increase all MDA 100 feet and Cat C visibility ¼ mile. Rwy 36 helicopter visibility reduction below ¾ SM NA.

MISSED APPROACH: Climb to 1600 then climbing left turn to 2300 direct LXY NDB and hold.

AWOS-3 127.275	WACO APP CON 127.65 352.0	UNICOM 122.8 (CTAF)
--------------------------	-------------------------------------	-------------------------------



CATEGORY	A	B	C	D
CIRCLING	1080-1	536 (600-1)	1180-1¾ 636 (700-1¾)	NA

SC-5, 28 JAN 2021 to 25 FEB 2021

SC-5, 28 JAN 2021 to 25 FEB 2021

WAAS CH 69228 W36A	APP CRS 005°	Rwy Idg TDZE Apt Elev	5000 541 545
--	------------------------	-----------------------------	---

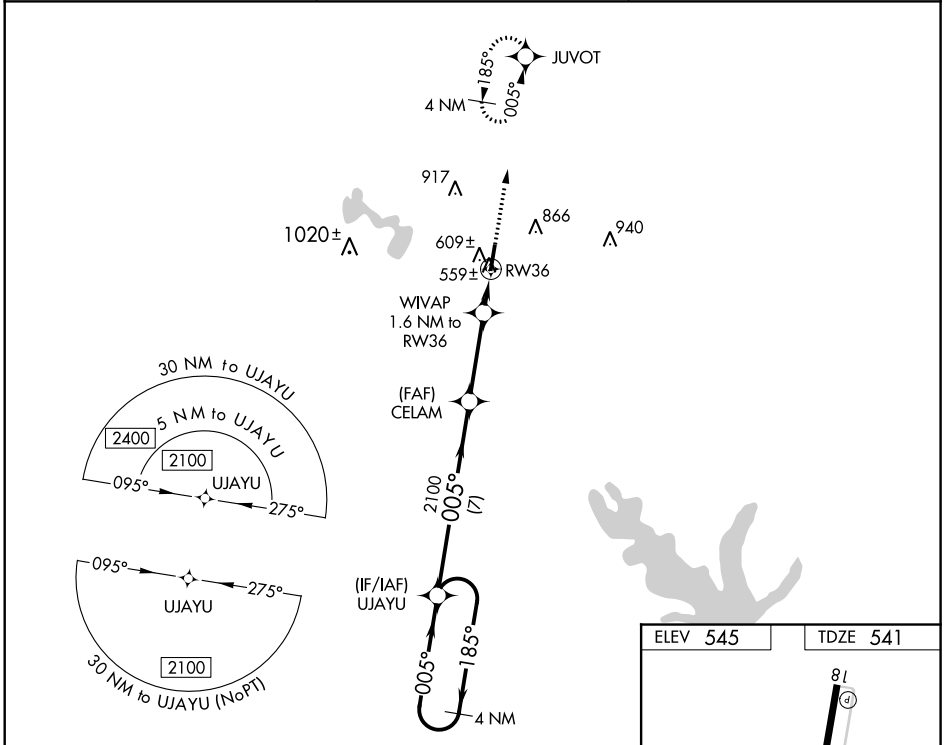
RNAV (GPS) RWY 36

MEXIA-LIMESTONE COUNTY (L.X.Y)

▽ DME/DME RNP-0.3 NA. Helicopter visibility reduction below ¾ SM NA. Obtain local altimeter setting on CTAF; when not received, use Waco Rgnl altimeter setting and increase all MDA 100 feet; increase LP Cat C visibility ¼ mile and LNAV and circling Cat C visibility ¼ mile.

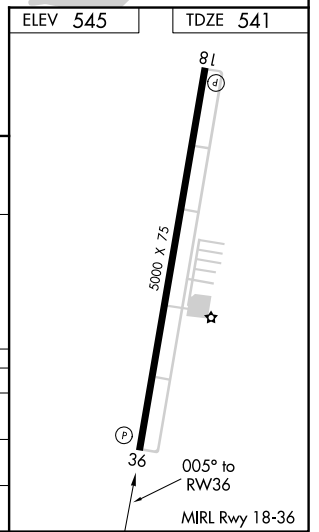
△ NA MISSED APPROACH: Climb to 2400 direct JUVOT and hold.

AWOS-3 127.275	WACO APP CON 127.65 352.0	UNICOM 122.8 (CTAF)
--------------------------	-------------------------------------	-------------------------------



SC-5, 28 JAN 2021 to 25 FEB 2021

SC-5, 28 JAN 2021 to 25 FEB 2021



4 NM Holding Pattern	VGSI and descent angles not coincident (VGSI Angle 3.00/TCH 24).	2400	JUVOT	
UJAYU	CELAM	WIVAP 1.6 NM to RWY 36	RWY 36	
2100 ← 185°	005° → 2100	3.00° TCH 40	1080	
7 NM		3.2 NM	1.6 NM	
CATEGORY	A	B	C	D
LP MDA	860-1	319 (400-1)		NA
LNAV MDA	880-1	339 (400-1)		NA
CIRCLING	960-1 415 (500-1)	1000-1 456 (500-1)	1180-1¾ 636 (700-1¾)	NA