

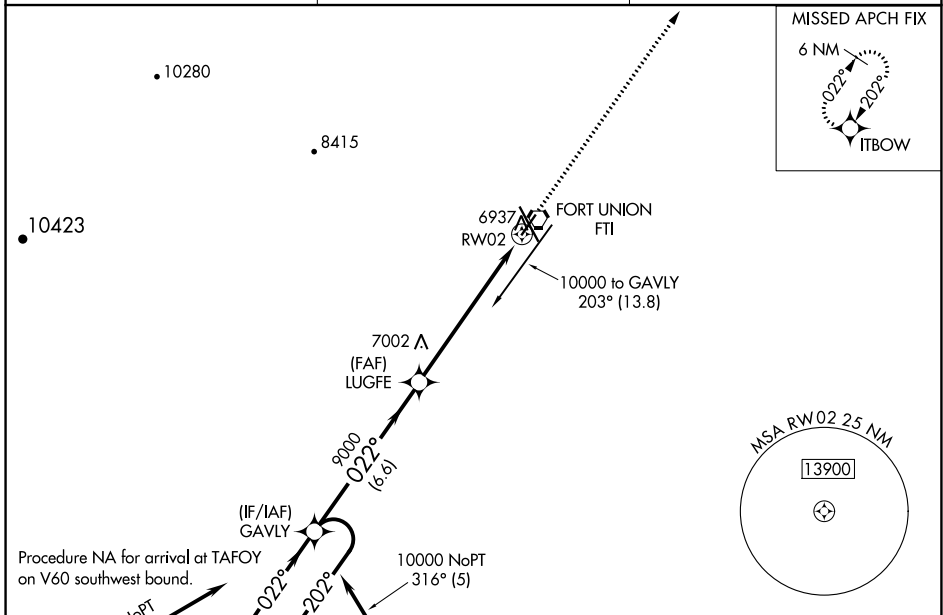
APP CRS 022°	Rwy Idg 5006
	TDZE 6870
	Apt Elev 6877

RNAV (GPS) RWY 2

LAS VEGAS MUNI (LVS)

RNP APCH-GPS.	ODALS 	MISSED APPROACH: Climb to 10000 direct ITBOW and hold.
<p>Inop table does not apply to Cat C. When local altimeter not received, use Santa Fe Muni altimeter setting and increase all MDAs 200 feet; increase LNAV Cat C visibility to 1 1/4 SM and Circling Cat C visibility to 2 1/4 SM.</p>		

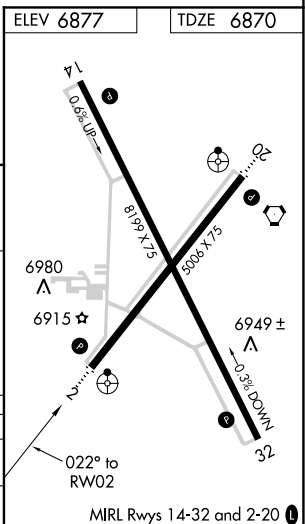
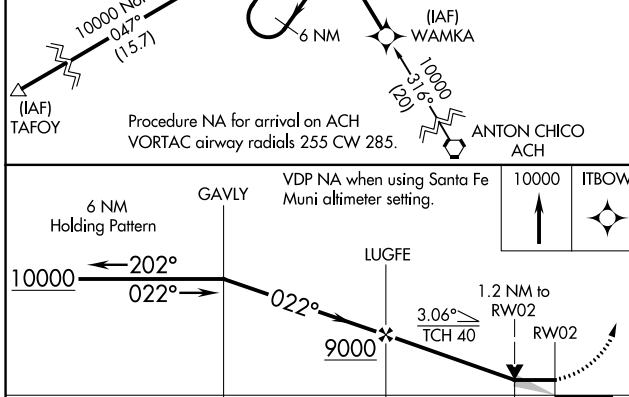
ASOS 118.525	ALBUQUERQUE CENTER 132.8 346.35	UNICOM 122.8 (CTAF) 0
------------------------	---	---------------------------------



Procedure NA for arrival at TAFOY on V60 southwest bound.

Procedure NA for arrival on ACH VORTAC airway radials 255 CW 285.

VDP NA when using Santa Fe Muni altimeter setting.



CATEGORY	A	B	C	D
LNAV MDA	7280-3/4	410 (500-3/4)	7280-1 1/4 410 (500-1 1/4)	NA
CIRCLING	7420-1	543 (600-1)	7420-1 1/2 543 (600-1 1/2)	NA

SW-1, 02 DEC 2021 to 30 DEC 2021

SW-1, 02 DEC 2021 to 30 DEC 2021

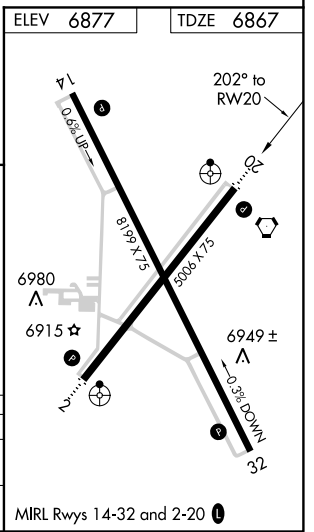
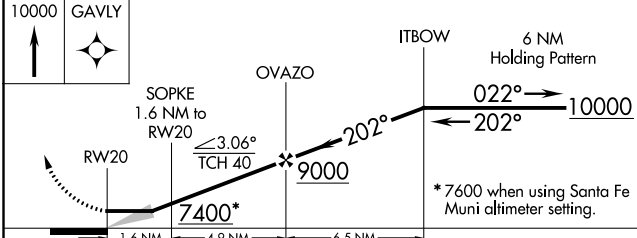
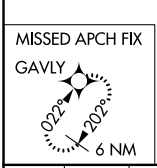
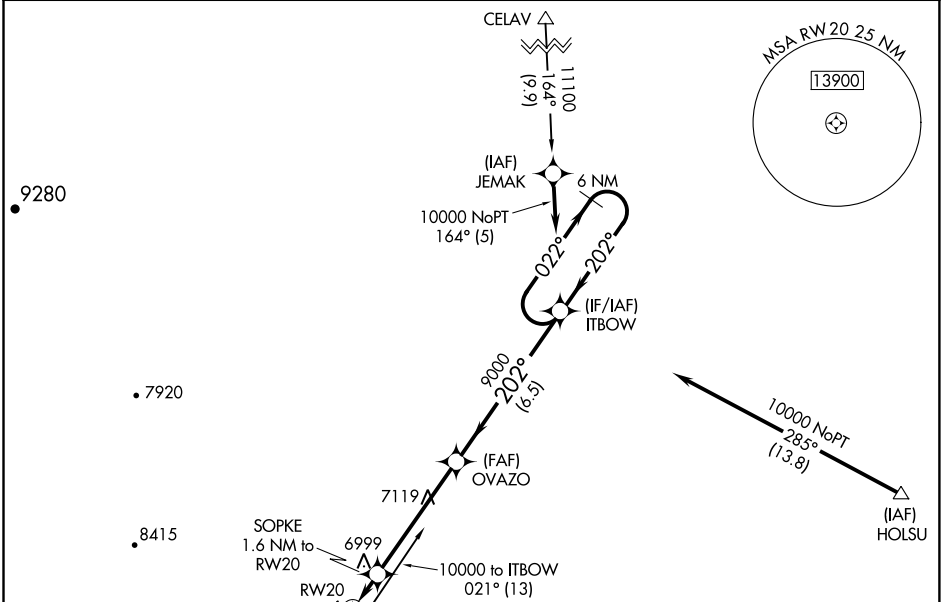
RNAV (GPS) RWY 20

LAS VEGAS MUNI (LVS)

APP CRS 202°	Rwy Idg 5006
	TDZE 6867
	Apt Elev 6877

RNP APCH-GPS.	ODALS	MISSED APPROACH: Climb to 10000 direct GAVLY and hold.
<p>⚠ When local altimeter setting not received, use Santa Fe Muni altimeter setting and increase all MDAs 200 feet; increase LNAV Cat C visibility to 1½ SM and Circling Cat C visibility to 2¼ SM. Straight-in minimums NA when using Santa Fe Muni altimeter setting.</p>		

ASOS 118.525	ALBUQUERQUE CENTER 132.8 346.35	UNICOM 122.8 (CTAF)
------------------------	---	-------------------------------



CATEGORY	A	B	C	D
LNAV MDA	7260-¾ 393 (400-¾)			NA
CIRCLING	7420-1	543 (600-1)	7420-1½ 543 (600-1½)	NA

SW-1, 02 DEC 2021 to 30 DEC 2021

SW-1, 02 DEC 2021 to 30 DEC 2021

RNAV (GPS) RWY 32

LAS VEGAS MUNI (LVS)

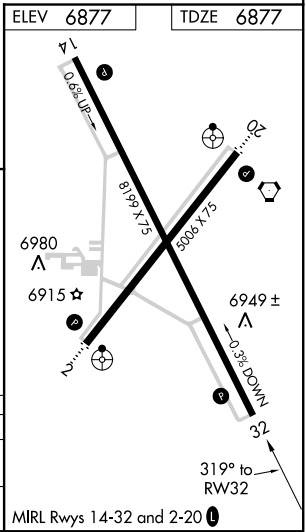
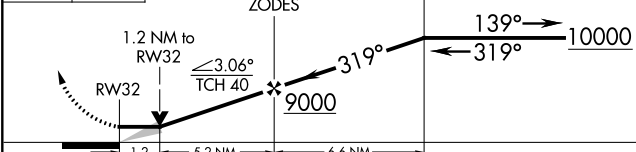
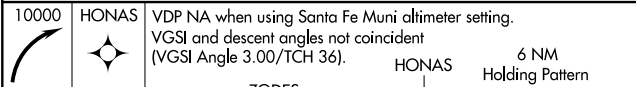
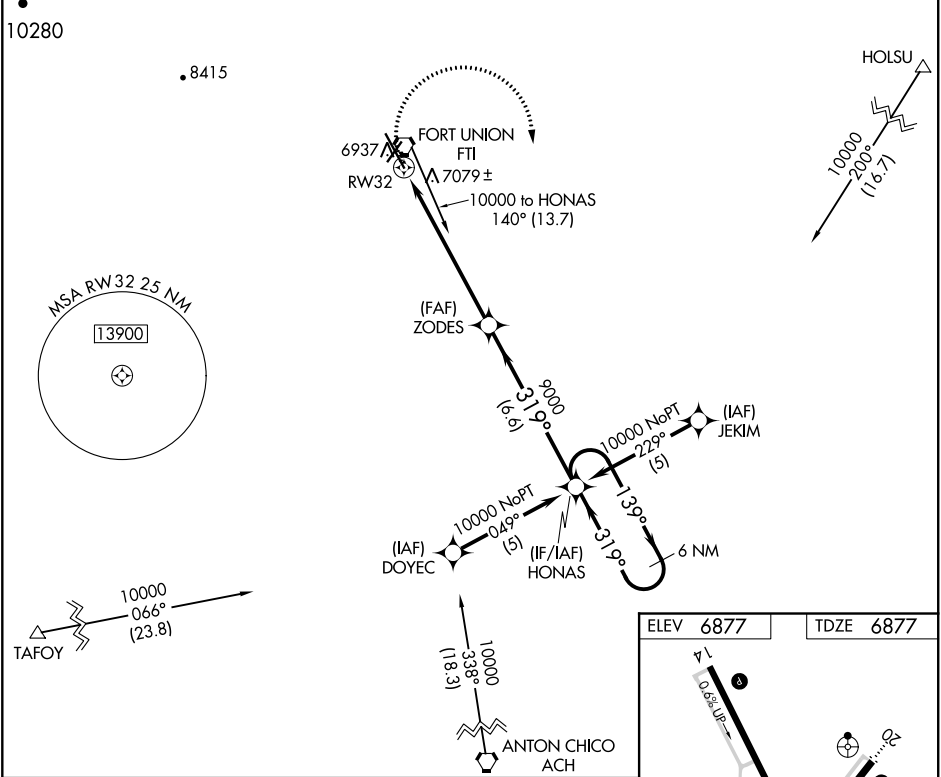
APP CRS 319°	Rwy Idg 8199
	TDZE 6877
	Apt Elev 6877

RNP APCH-GPS.

▼ When local altimeter not received, used Santa Fe Muni altimeter setting and increase all MDA 200 feet; increase LNAV Cat C visibility to 1 7/8 SM and Circling Cat C visibility to 2 1/4 SM.

MISSED APPROACH: Climbing right turn to 10000 direct HONAS and hold.

ASOS 118.525	ALBUQUERQUE CENTER 132.8 346.35	UNICOM 122.8 (CTAF) 0
------------------------	---	---------------------------------



CATEGORY	A	B	C	D
LNAV MDA	7320-1	443 (500-1)	7320-1 1/4 443 (500-1 1/4)	NA
CIRCLING	7420-1	543 (600-1)	7420-1 1/2 543 (600-1 1/2)	NA

SW-1, 02 DEC 2021 to 30 DEC 2021


SW-1, 02 DEC 2021 to 30 DEC 2021

VORTAC FTI 117.3 Chan 120	APP CRS 192°	Rwy Idg TDZE Apt Elev	5006 6867 6877
---	------------------------	-----------------------------	---

VOR RWY 20

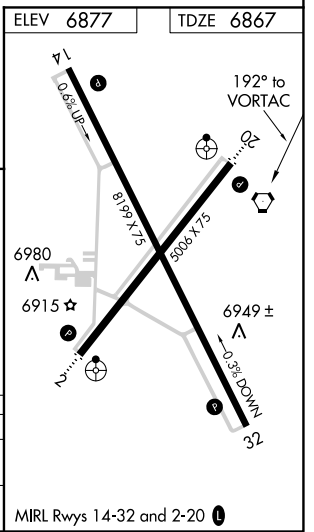
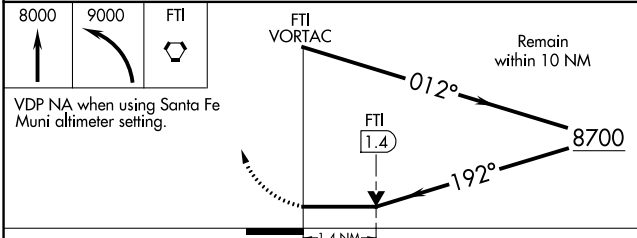
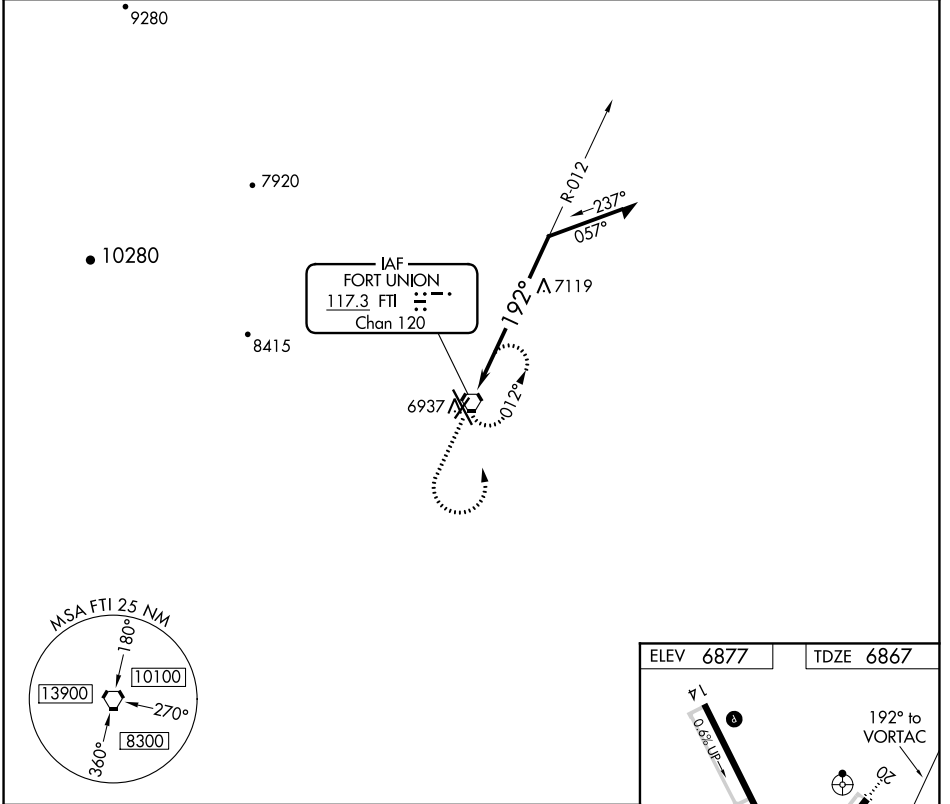
LAS VEGAS MUNI (LVS)

∇ Inoperative table does not apply. When local altimeter not received, use Santa Fe Muni altimeter setting and increase all MDA 200 feet;
⚠ increase Circling Cat C visibility 3/4 SM.

ODALS 

MISSED APPROACH: Climb to 8000 then climbing left turn to 9000 direct FTI VORTAC and hold.

ASOS 118.525	ALBUQUERQUE CENTER 132.8 346.35	UNICOM 122.8 (CTAF) 0
------------------------	---	---------------------------------



CATEGORY	A	B	C	D
S-20	7420-1	553 (600-1)	7420-1½ 553 (600-1½)	NA
C CIRCLING	7420-1	543 (600-1)	7420-1½ 543 (600-1½)	NA

SW-1, 02 DEC 2021 to 30 DEC 2021

SW-1, 02 DEC 2021 to 30 DEC 2021