

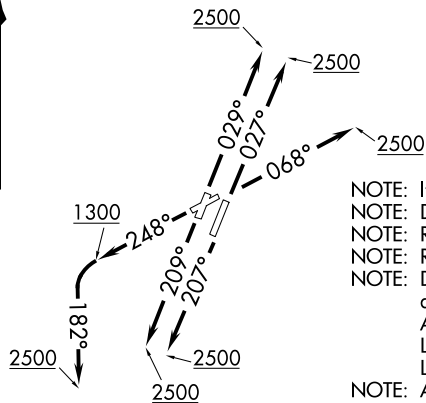
ROCKT ONE DEPARTURE (RNAV)  
 (ROCKT1, ROCKT) 15AUG19  
 CINCINNATI, OHIO  
 CINCINNATI MUNI AIRPORT LUNKEN FIELD (L, UTK)

ATIS 120.25  
 LUNKEN TOWER ★  
 118.7 (CTAF) 257.8  
 GND CON  
 121.9  
 CLNC DEL  
 121.9  
 CLNC DEL  
 124.9 (When twr closed)  
 CINCINNATI DEP CON  
 121.0 254.25

**TAKEOFF MINIMUMS**

Rwy 3L: 400-2 with minimum climb of 226' per NM to 1300  
 or standard with minimum climb of 423' per NM to 1000.  
 Rwy 3R: 400-2 with minimum climb of 233' per NM to 1300  
 or standard with minimum climb of 384' per NM to 1100.  
 Rwy 7: 400-1 3/4 with minimum climb of 279' per NM to 1000  
 or standard with minimum climb of 451' per NM to 1000.  
 Rwy 21L: 500-2 1/2 with minimum climb of 254' per NM to 1100  
 or standard with minimum climb of 439' per NM to 1000.  
 Rwy 21R: 500-2 3/4 with minimum climb of 226' per NM to 1100  
 or standard with minimum climb of 489' per NM to 1100.  
 Rwy 25: 600-2 1/2 with minimum climb of 268' per NM to 1100.

**TOP ALTITUDE:  
 ASSIGNED BY ATC.**

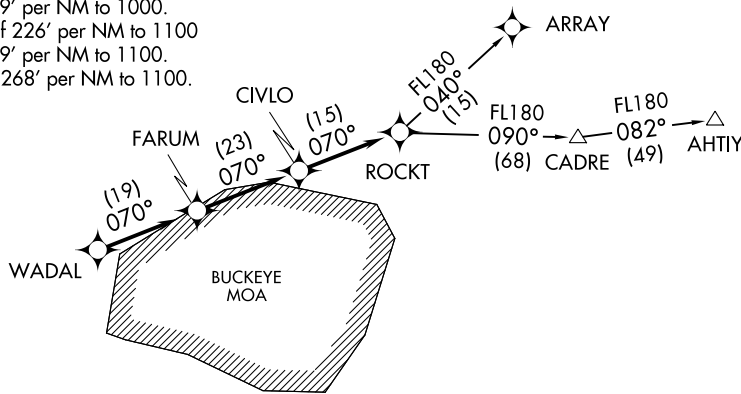


NOTE: If unable to accept climb rates, advise ATC on initial contact.  
 NOTE: DME/DME/IRU or GPS required.  
 NOTE: RADAR required.  
 NOTE: RNAV 1.  
 NOTE: Departure procedure limited to aircraft with the following destination airports

and departure times as indicated:  
 Anytime - ABE, AGC, ALB, AVP, BDL, BKL, BOS, BWI, CAK, CGF, CLE, LNN,  
 LPR, MDT, MHT, PHL, PIT, PNE, PVD, PWM, SWF, TTN, UNV, and overseas flights.  
 LGA between 1000-1800 UTC.

NOTE: ARRAY TRANSITION (ROCKT1, ARRAY) limited to aircraft landing: BKL, CAK, CLE, CGF, LNN, LPR.  
 NOTE: Accelerate to 250K, if unable advise ATC.

(NARRATIVE ON FOLLOWING PAGE)



(ROCKT1, ROCKT) 19339  
 ROCKT ONE DEPARTURE (RNAV)  
 AL-83 (FAA)  
 CINCINNATI MUNI AIRPORT LUNKEN FIELD (L, UTK)  
 CINCINNATI, OHIO



DEPARTURE ROUTE DESCRIPTION

TAKEOFF RUNWAY 3L: Climb heading 029° to 2500, for vectors to WADAL, thence . . . .

TAKEOFF RUNWAY 3R: Climb heading 027° to 2500, for vectors to WADAL, thence . . . .

TAKEOFF RUNWAY 7: Climb heading 068° to 2500, for vectors to WADAL, thence . . . .

TAKEOFF RUNWAY 21L: Climb heading 207° to 2500, for vectors to WADAL, thence . . . .

TAKEOFF RUNWAY 21R: Climb heading 209° to 2500, for vectors to WADAL, thence . . . .

TAKEOFF RUNWAY 25: Climb heading 248° to 1300, then climbing left turn heading 182° to 2500, for vectors to WADAL, thence . . . .

. . . . on depicted route to ROCKT. Maintain ATC assigned altitude. Expect clearance to filed altitude within 10 minutes after departure.

AHTY TRANSITION (ROCKT1.AHTY)

ARRAY TRANSITION (ROCKT1.ARRAY)

EC-2, 28 JAN 2021 to 25 FEB 2021

EC-2, 28 JAN 2021 to 25 FEB 2021