

WAAS CH 93934 W02A	APP CRS 021°	Rwy Idg TDZE 718 Apt Elev 718	5001
--	------------------------	---	-------------

RNAV (GPS) RWY 2

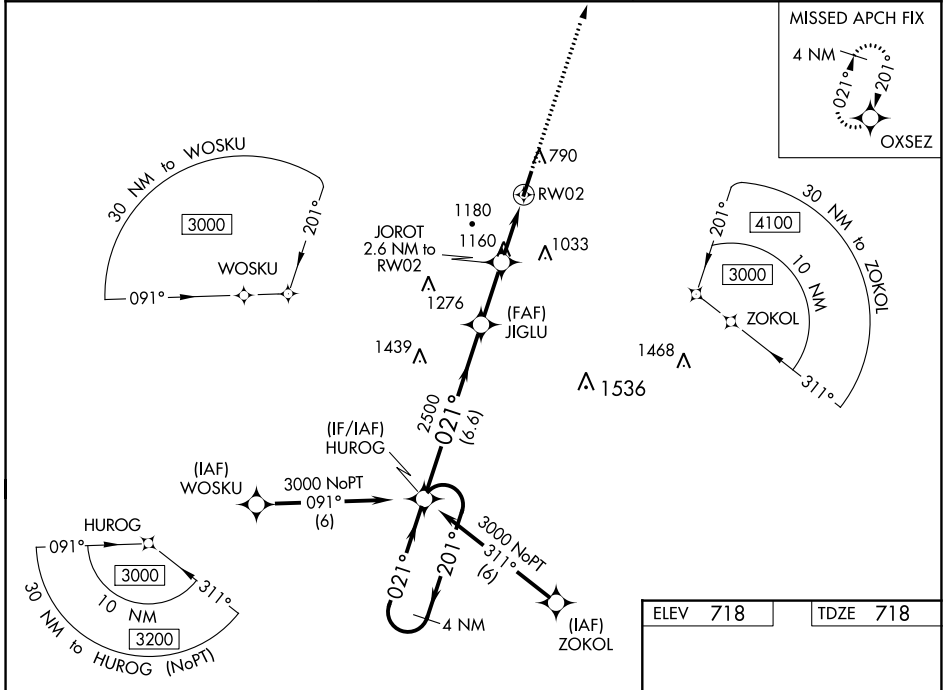
ELLINGTON (LUG)

RNP APCH-GPS.

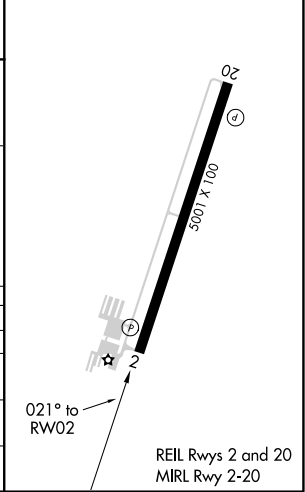
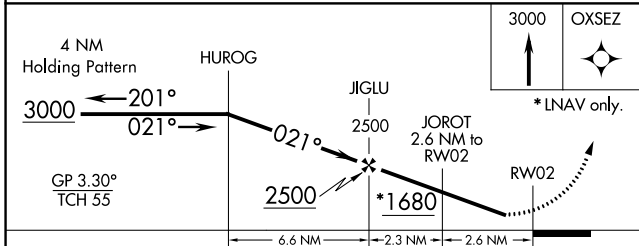
▼ When local altimeter setting not received, use Nashville Intl altimeter setting: increase LPV DA to 1096 feet and all visibilities $\frac{1}{8}$ SM and LNAV/VNAV DA to 1531 feet and all visibilities $\frac{1}{2}$ SM; increase all MDA 120 feet and visibility LNAV Cats B/C/D and Circling Cats A/B/C $\frac{1}{2}$ SM. Baro-VNAV NA when using Nashville Intl altimeter. For uncompensated Baro-VNAV systems, LNAV/VNAV NA below -16°C or above 54°C. Rwy 2 helicopter visibility reduction below $\frac{3}{4}$ SM NA. Circling Rwy 20 NA at night.

▲ NA MISSED APPROACH: Climb to 3000 direct OXSEZ and hold.

AWOS-3 135.775	MEMPHIS CENTER 128.15 323.125	UNICOM 122.8 (CTAF)
--------------------------	---	-------------------------------



ELEV 718	TDZE 718
----------	----------



CATEGORY	A	B	C	D
LPV DA	993- $\frac{7}{8}$	275 (300- $\frac{7}{8}$)		NA
LNAV/VNAV DA	1428-2	710 (800-2)		NA
LNAV MDA	1420-1	702 (800-1)	1420-2	702 (800-2)
CIRCLING	1420-1 702 (800-1)	1480-1 762 (800-1)	1540-2 $\frac{1}{2}$ 822 (900-2 $\frac{1}{2}$)	1640-3 922 (1000-3)

SE-1, 01 DEC 2022 to 29 DEC 2022

SE-1, 01 DEC 2022 to 29 DEC 2022

WAAS CH 56619 W20A	APP CRS 201°	Rwy Idg TDZE 5001 710 Apt Elev 718
--	------------------------	--

RNAV (GPS) RWY 20

ELLINGTON (LUG)

RNP APCH-GPS.

▽ When local altimeter setting not received, use Nashville Intl altimeter setting and increase all MDA 120 feet and visibility LNAV Cats C and D and Circling Cats B and C ¼ SM. Circling to Rwy 2 NA at night. Straight-in Rwy 20 NA at night, Circling Rwy 20 NA at night. Rwy 20 helicopter visibility reduction below 1 SM NA.

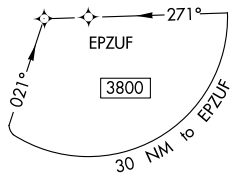
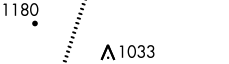
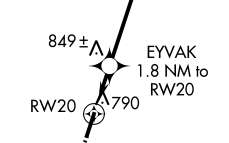
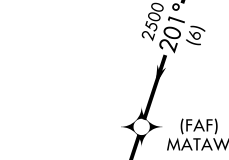
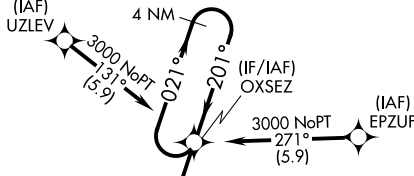
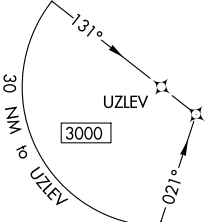
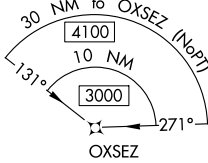
MISSED APPROACH:
Climb to 3000 direct HUROG and hold.

AWOS-3
135.775

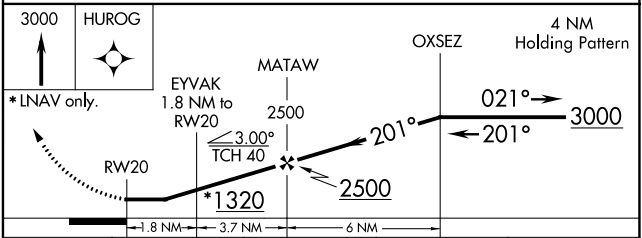
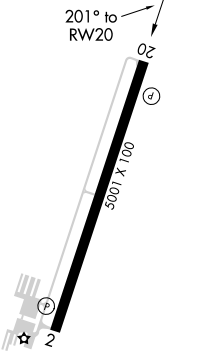
MEMPHIS CENTER
128.15 323.125

UNICOM
122.8 (CTAF)

Λ 1789



ELEV 718	TDZE 710
----------	----------



CATEGORY	A	B	C	D
LNAV MDA	1100-1	390 (400-1)	1100-1½	390 (400-1½)
C CIRCLING	1300-1 582 (600-1)	1480-1 762 (800-1)	1540-2½ 822 (900-2½)	1640-3 922 (1000-3)

SE-1, 01 DEC 2022 to 29 DEC 2022

SE-1, 01 DEC 2022 to 29 DEC 2022