

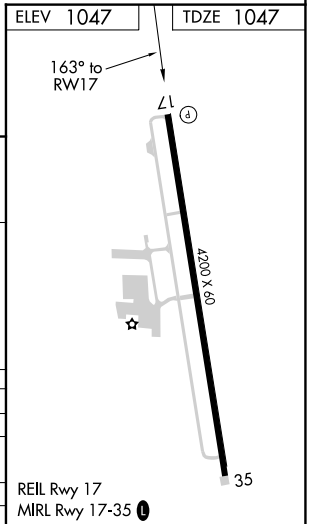
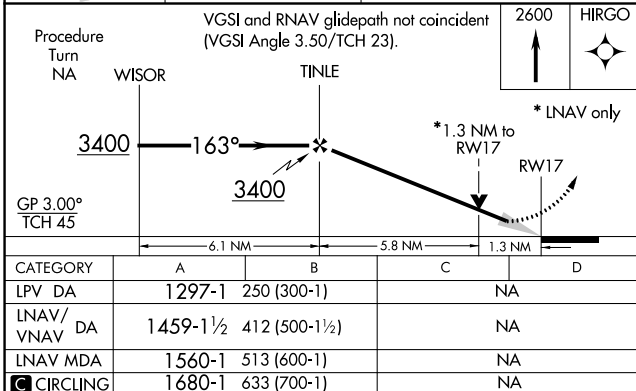
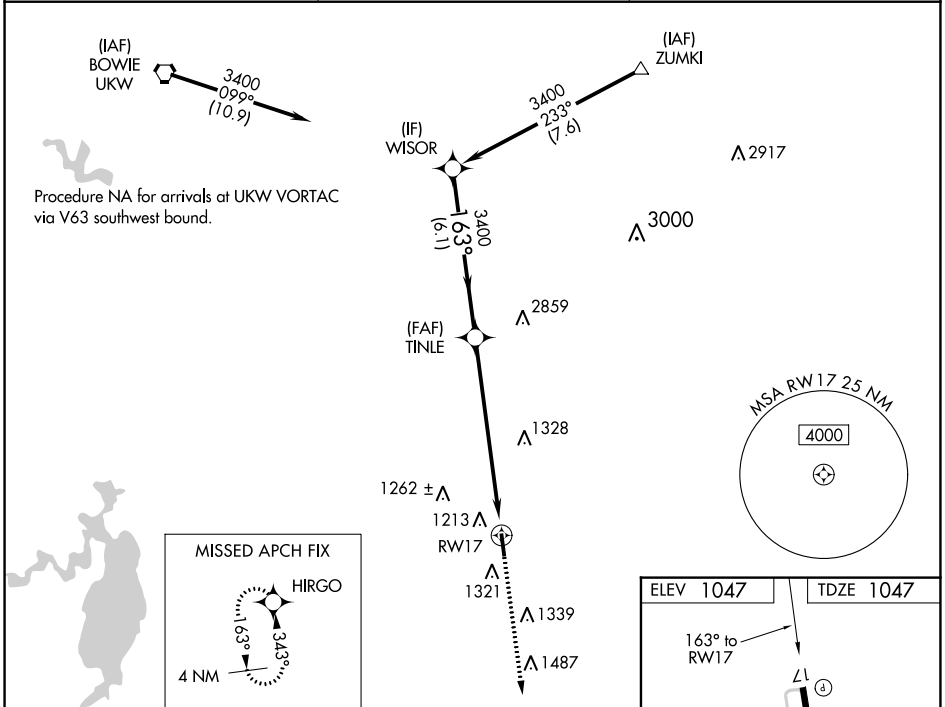
WAAS CH <b>40107</b> <b>W17A</b>	APP CRS <b>163°</b>	Rwy Idg <b>4200</b> TDZE <b>1047</b> Apt Elev <b>1047</b>
--	------------------------	---

# RNAV (GPS) RWY 17

DECATUR MUNI (LUD)

RNP APCH.	<p><b>▽</b> When local altimeter setting not received, use Fort Worth Meacham Intl altimeter setting and increase all DAs 113 feet, and all MDAs 120 feet, increase LPV visibilities ¼ mile, LNAV/VNAV visibilities ½ mile, and circling Cat B visibility ½ mile. Baro-VNAV and VDP NA when using Fort Worth Meacham Intl altimeter setting. For uncompegnated Baro-VNAV systems, LNAV/VNAV NA below -17°C (2°F) or above 54°C (130°F).</p>
MISSED APPROACH: Climb to 2600 direct HIRGO and hold.	

AWOS-3 <b>118.225</b>	REGIONAL APP CON <b>118.1 306.95</b>	UNICOM <b>122.8(CTAF) ①</b>
--------------------------	---	--------------------------------



SC-2, 27 JAN 2022 to 24 FEB 2022

SC-2, 27 JAN 2022 to 24 FEB 2022

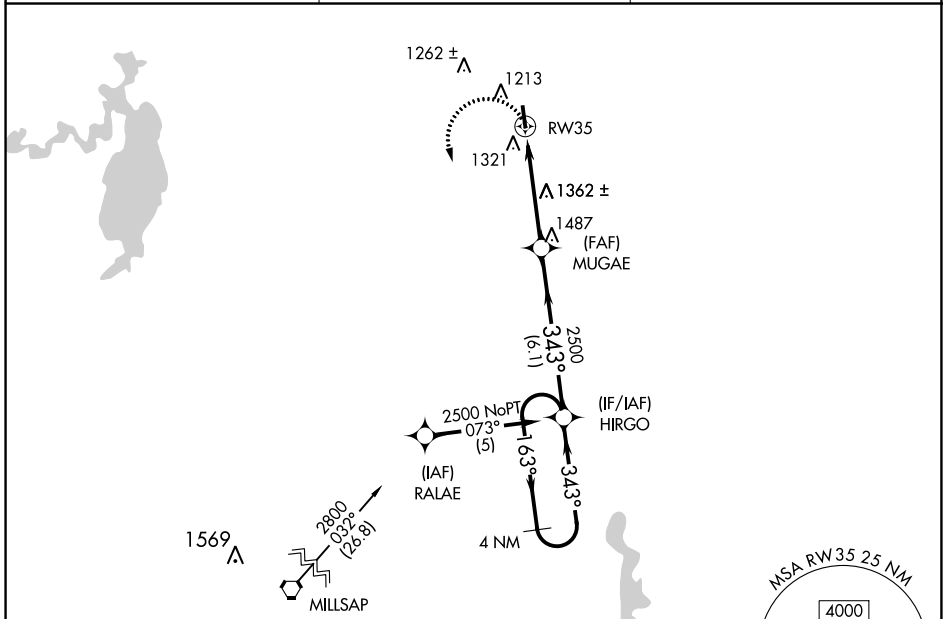
APP CRS	Rwy Idg	<b>4200</b>
<b>343°</b>	TDZE	<b>1047</b>
	Apt Elev	<b>1047</b>

# RNAV (GPS) RWY 35

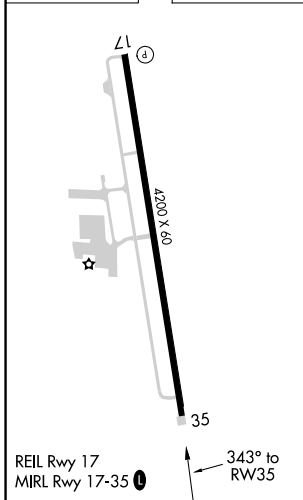
DECATUR MUNI (LUD)

RNP APCH.	MISSED APPROACH: Climbing left turn to 2600 direct HIRGO and hold.
<p>▼ When local altimeter setting not received, use Fort Worth Meacham Intl altimeter setting and increase all MDAs 120 feet, and Cat B visibilities ¼ mile.</p> <p>▲ Rwy 35 helicopter visibility reduction below ¾ SM NA.</p>	

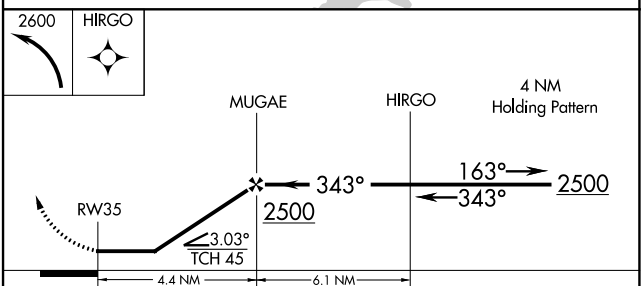
AWOS-3 <b>118.225</b>	REGIONAL APP CON <b>118.1 306.95</b>	UNICOM <b>122.8(CTAF)</b>
--------------------------	---	------------------------------



ELEV 1047	TDZE 1047
-----------	-----------



Procedure NA for arrivals at MQP VORTAC on airway radials 330 CW 001.



CATEGORY	A	B	C	D
LNAV MDA	1680-1	633 (700-1)	NA	
<b>C</b> CIRCLING	1680-1	633 (700-1)	NA	

SC-2, 27 JAN 2022 to 24 FEB 2022

SC-2, 27 JAN 2022 to 24 FEB 2022

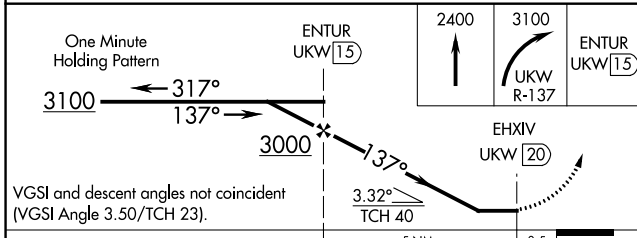
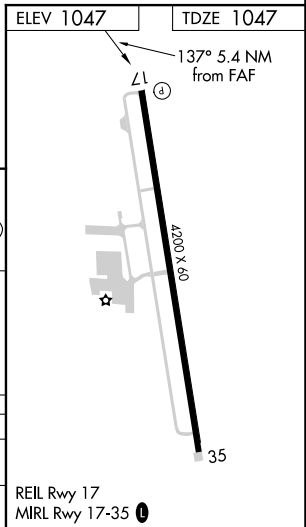
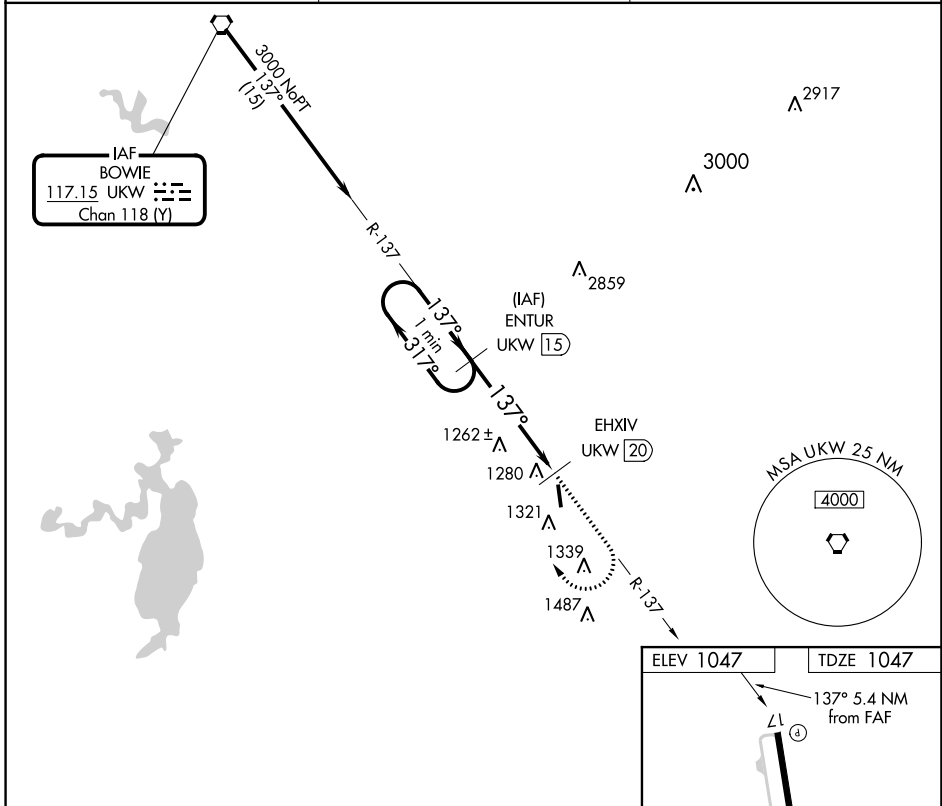
VORTAC UKW <b>117.15</b> Chan <b>118</b> (Y)	APP CRS <b>137°</b>	Rwy Idg TDZE Apt Elev	<b>4200</b> <b>1047</b> <b>1047</b>
--	------------------------	-----------------------------	---

# VOR/DME RWY 17

DECATUR MUNI (LUD)

**⚠** When local altimeter setting not received, use Fort Worth Meacham Intl altimeter setting. **MISSED APPROACH:** Climb to 2400 then climbing right turn to 3100 via UKW R-137 to ENTUR/15 DME and hold.

AWOS-3 <b>118.225</b>	REGIONAL APP CON <b>118.1 306.95</b>	UNICOM <b>122.8(CTAF) 0</b>
--------------------------	---	--------------------------------



CATEGORY	A	B	C	D
S-17	1700-1 653 (700-1)	1700-1¼ 653 (700-1¼)		NA
<b>C</b> CIRCLING	1800-1 753 (800-1)	1800-1¼ 753 (800-1¼)		NA

SC-2, 27 JAN 2022 to 24 FEB 2022

SC-2, 27 JAN 2022 to 24 FEB 2022