

WAAS CH <b>90419</b> <b>W24A</b>	APP CRS <b>245°</b>	Rwy Idg TDZE Apt Elev	<b>3700</b> <b>295</b> <b>302</b>
--	------------------------	-----------------------------	---

# RNAV (GPS) RWY 24

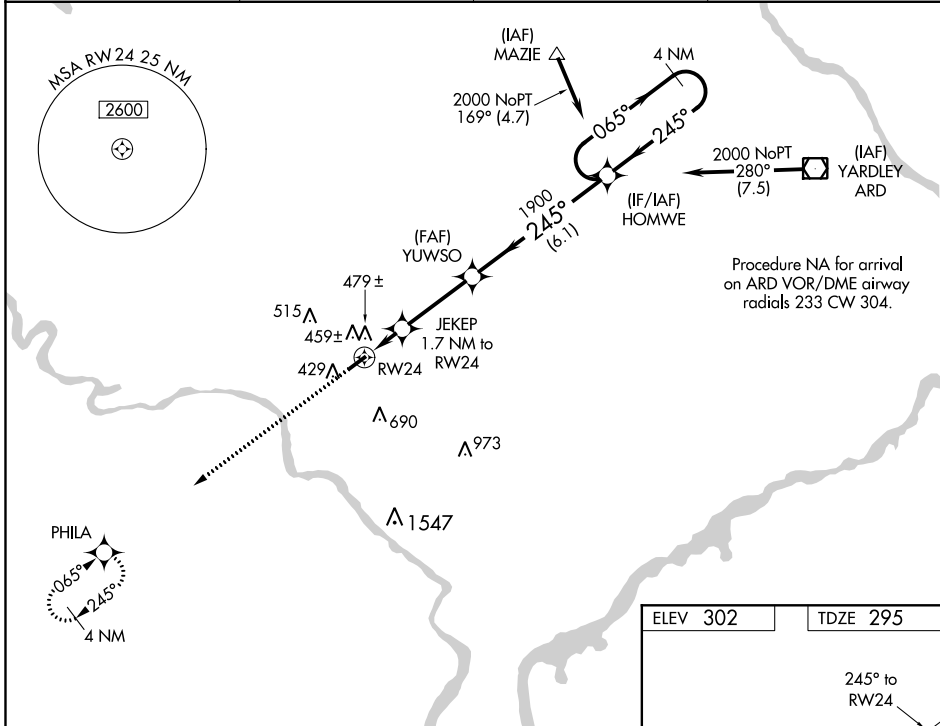
WINGS FIELD (LOM)

RNP APCH

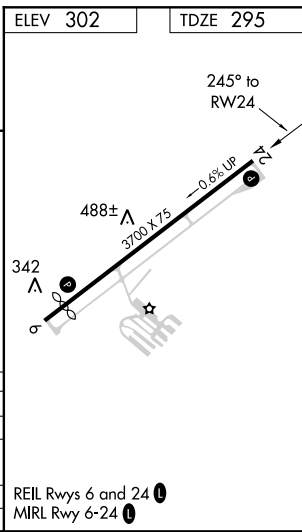
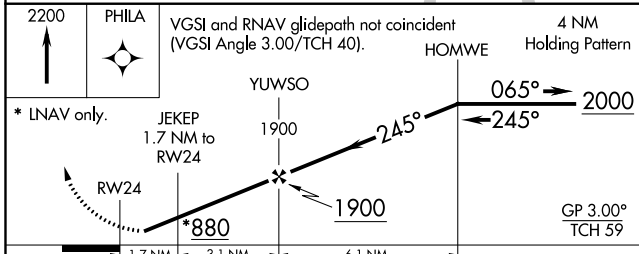
Baro-VNAV NA when using Pottstown altimeter setting. For uncompensated Baro-VNAV systems, LNAV/VNAV NA below -15°C (5°F) or above 54°C (130°F). When local altimeter setting not received, use Pottstown altimeter setting and increase all DA 35 feet and all MDA 40 feet. Rwy 24 helicopter visibility reduction below 3/4 SM NA.

MISSED APPROACH: Climb to 2200 direct PHILA and hold.

AWOS-3 <b>118.925</b>	PHILADELPHIA APP CON <b>126.85 263.125</b>	CLNC DEL <b>118.55</b>	UNICOM <b>123.0 (CTAF) 0</b>
--------------------------	---	---------------------------	---------------------------------



Procedure NA for arrival on ARD VOR/DME airway radials 233 CW 304.



CATEGORY	A	B	C	D
LPV DA	567-1	272 (300-1)		NA
LNAV/VNAV DA	775-1 3/4	480 (500-1 3/4)		NA
LNAV MDA	740-1	445 (500-1)		NA
CIRCLING	780-1	478 (500-1)		NA

NE-4, 16 JUL 2020 to 13 AUG 2020

NE-4, 16 JUL 2020 to 13 AUG 2020

WAAS CH <b>42719</b> <b>W06A</b>	APP CRS <b>065°</b>	Rwy Idg TDZE Apt Elev	<b>3523</b> <b>301</b> <b>302</b>
--	------------------------	-----------------------------	---

# RNAV (GPS) RWY 6

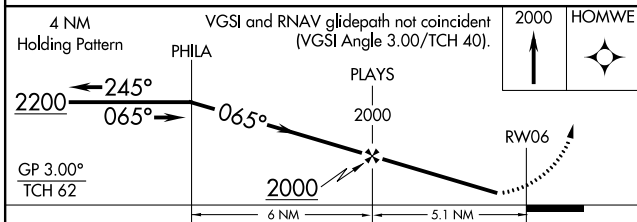
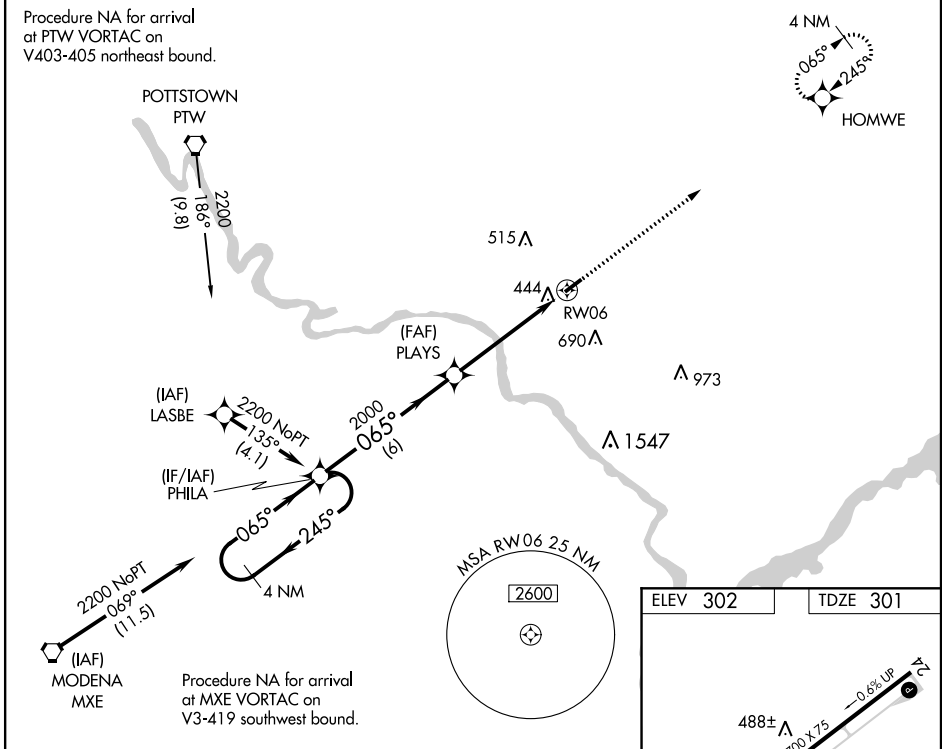
WINGS FIELD (LOM)

RNP APCH

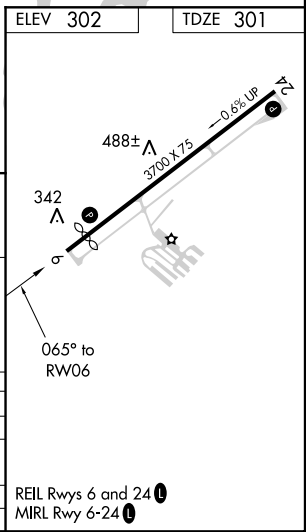
**▼** Baro-VNAV NA when using Pottstown altimeter setting. For uncompensated Baro-VNAV systems, LNAV/VNAV NA below -15°C (5°F) or above 54°C (130°F). When local altimeter setting not received, use Pottstown altimeter setting and increase all DA 35 feet and all MDA 40 feet; increase LPV Cats A/B visibility ¼ mile. Rwy 6 helicopter visibility reduction below ¾ SM NA.

MISSED APPROACH: Climb to 2000 direct HOMWE and hold.

AWOS-3 <b>118.925</b>	PHILADELPHIA APP CON <b>126.85 263.125</b>	CLNC DEL <b>118.55</b>	UNICOM <b>123.0 (CTAF)</b>
--------------------------	---	---------------------------	-------------------------------



CATEGORY	A	B	C	D
LPV DA	614-1	313 (400-1)		NA
LNAV/VNAV DA	788-1¾	487 (500-1¾)		NA
LNAV MDA	720-1	419 (500-1)		NA
CIRCLING	780-1	478 (500-1)		NA



NE-4, 16 JUL 2020 to 13 AUG 2020

NE-4, 16 JUL 2020 to 13 AUG 2020