

WAAS CH 90419 W24A	APP CRS 245°	Rwy Idg TDZE Apt Elev	3700 295 302
--	------------------------	-----------------------------	---

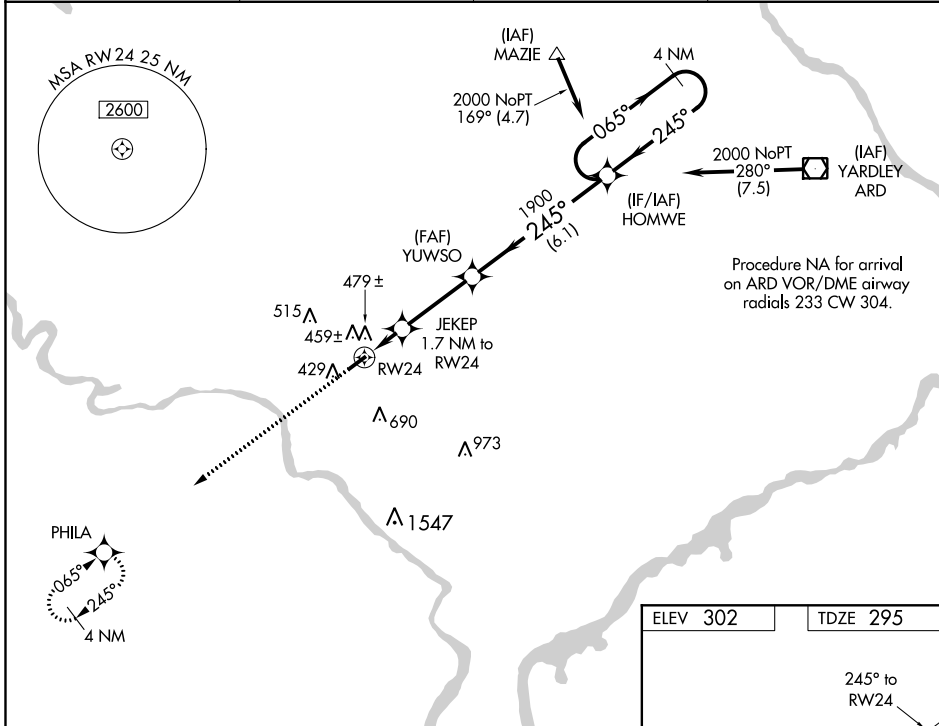
RNAV (GPS) RWY 24

WINGS FIELD (LOM)

RNP APCH
 ▽ Baro-VNAV NA when using Pottstown altimeter setting. For uncompensated Baro-VNAV systems, LNAV/VNAV NA below -15°C (5°F) or above 54°C (130°F). When local altimeter setting not received, use Pottstown altimeter setting and increase all DA 35 feet and all MDA 40 feet. Rwy 24 helicopter visibility reduction below 3/4 SM NA.

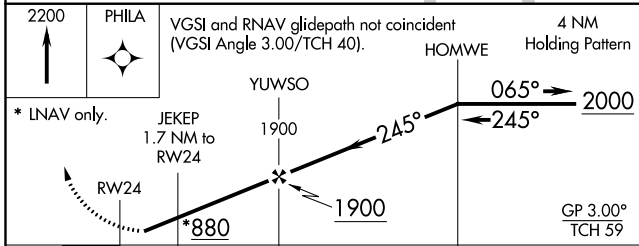
MISSED APPROACH: Climb to 2200 direct PHILA and hold.

AWOS-3 118.925	PHILADELPHIA APP CON 126.85 263.125	CLNC DEL 118.55	UNICOM 123.0 (CTAF) 0
--------------------------	---	---------------------------	---------------------------------

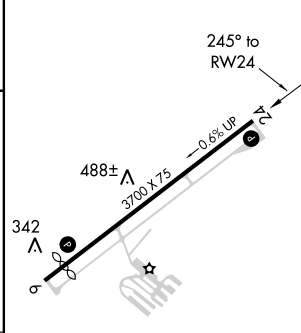


NE-4, 16 JUL 2020 to 13 AUG 2020

NE-4, 16 JUL 2020 to 13 AUG 2020



ELEV 302	TDZE 295
----------	----------



CATEGORY	A	B	C	D
LPV DA	567-1	272 (300-1)		NA
LNAV/VNAV DA	775-1 3/4	480 (500-1 3/4)		NA
LNAV MDA	740-1	445 (500-1)		NA
CIRCLING	780-1	478 (500-1)		NA

REIL Rwy 6 and 24 0
 MIRL Rwy 6-24 0

INSTRUMENT APPROACH PROCEDURE CHARTS

A IFR ALTERNATE AIRPORT MINIMUMS

Standard alternate minimums for non-precision approaches and approaches with vertical guidance [NDB, VOR, LOC, TACAN, LDA, SDF, VOR/DME, ASR, RNAV (GPS) or RNAV (RNP)] are 800-2. Standard alternate minimums for precision approaches (ILS, PAR, or GLS) are 600-2. Airports within this geographical area that require alternate minimums other than standard or alternate minimums with restrictions are listed below. NA - means alternate minimums are not authorized due to unmonitored facility, absence of weather reporting service, or lack of adequate navigation coverage. Civil pilots see FAR 91. IFR Alternate Minimums: Ceiling and Visibility Minimums not applicable to USA/USN/USAF. Pilots must review the IFR Alternate Minimums Notes for alternate airfield suitability.

NAME	ALTERNATE MINIMUMS	NAME	ALTERNATE MINIMUMS
ALLENTOWN, PA		BECKLEY, WV	
ALLENTOWN QUEEN		RALEIGH COUNTY	
CITY MUNI (XLL).....	VOR-B	MEMORIAL (BKW).....	ILS or LOC Rwy 19¹
NA when local weather not available			RNAV (GPS) Rwy 1²
Categories A, B, 900-2; Category C, 900-2½.			RNAV (GPS) Rwy 10²
			RNAV (GPS) Rwy 19²
			RNAV (GPS) Rwy 28³
			VOR Rwy 10²
LEHIGH VALLEY		NA when local weather not available.	
INTL (ABE).....	ILS or LOC Rwy 6¹	¹ LOC, Category C, 900-2½; Category D, 1000-3.	
	ILS or LOC Rwy 13²	² Category C, 900-2½; Category D, 1000-3.	
	ILS or LOC/DME Rwy 24¹	³ Categories A, B, 900-2; Category C, 900-2½; Category D, 1000-3.	
	RNAV (GPS) Rwy 6³		
	RNAV (GPS) Rwy 13³		
	RNAV (GPS) Rwy 24³		
	RNAV (GPS) Rwy 31³		
	VOR-A³		
¹ LOC, Category C, 800-2½; Category D, 1300-3.		BEDFORD, PA	
² ILS, LOC, Categories A, B, 900-2; Category C, 900-2½; Category D, 1300-3.		BEDFORD	
³ Category C, 800-2½; Category D, 1300-3.		COUNTY (HMZ).....	VOR-A²
			RNAV (GPS) Rwy 14¹
ALTOONA, PA		¹ Categories A, B, 900-4; Category C, 1100-4; Category D, 1800-4.	
ALTOONA-BLAIR		² Categories A, B, 1600-2; Category C, 1600-3; Category D, 1800-3.	
COUNTY (AOO).....	ILS or LOC Rwy 21¹		
	RNAV (GPS) Rwy 21²³		
	RNAV (GPS) Y Rwy 3²³		
¹ ILS, Categories A, B, 800-2; Category C, 1300-3; Category D, 1400-3; LOC, Category C, 1300-3; Category D, 1400-3.		BLUEFIELD, WV	
² NA when local weather not available.		MERCER	
³ Category C, 1300-3; Category D, 1400-3.		COUNTY (BLF).....	ILS or LOC Rwy 23¹
			RNAV (GPS) Rwy 5²
			RNAV (GPS) Rwy 23³
			VOR Rwy 23²
BEAVER FALLS, PA		NA when local weather not available.	
BEAVER		¹ LOC, Category D, 800-2¼.	
COUNTY (BVI).....	LOC Rwy 10¹	² Category D, 800-2¼.	
	VOR Rwy 28²	³ Category C, 800-2¼; Category D, 800-2½.	
¹ NA when control tower closed.			
² Categories A, B, 900-2; Categories C, D, 900-2½.		BRADFORD, PA	
		BRADFORD	
		RGNL (BFD).....	RNAV (GPS) Rwy 14
			RNAV (GPS) Rwy 32
			VOR Rwy 14¹
			VOR/DME Rwy 14
		NA when local weather not available.	
		¹ Category C, 800-2½; Category D, 800-2¼.	

16 JUL 2020 to 13 AUG 2020

16 JUL 2020 to 13 AUG 2020

NAME ALTERNATE MINIMUMS

BUCKHANNON, WV

UPSHUR COUNTY
RGNL (W22).....**VOR-A**
Categories A, B, 1200-2.

BUTLER, PA

PITTSBURGH/BUTLER
RGNL (BTP).....**ILS or LOC Rwy 8¹**
RNAV (GPS) Rwy 8²
RNAV (GPS) Rwy 26²

¹ILS, Category C, 900-2½; Category D, 900-2¾.
²LOC, Category C, 900-2½; Category D, 900-2¾.
²Category C, 900-2½; Category D, 900-2¾.

CHARLESTON, WV

YEAGER (CRW).....**ILS or LOC Rwy 5¹**
ILS or LOC Rwy 23¹
RNAV (GPS) Y Rwy 5²
RNAV (GPS) Y Rwy 23³
VOR-A²

¹LOC, Category C, 900-2½; Category D, 1000-3.
²Category C, 900-2½; Category D, 1000-3.
³Category C, 900-2½; Category D, 900-2¾.

CLARKSBURG, WV

NORTH CENTRAL
WEST VIRGINIA (CKB).....**ILS or LOC Rwy 21¹²**
RNAV (GPS) Rwy 3³
RNAV (GPS) Rwy 21⁴
VOR-A⁵⁶

¹NA when control tower closed.
²LOC, Category B, 900-2; Categories C, D, 1100-3.
³Category B, 900-2; Categories C, D, 1100-3.
⁴Categories C, D, 1100-3.
⁵Category D, 900-2¾.
⁶NA when local weather not available.

CLEARFIELD, PA

CLEARFIELD-
LAWRENCE (FIG).....**RNAV (GPS) Rwy 12¹²**
RNAV (GPS) Rwy 30³

¹NA when local weather not available.
²Category C, 800-2¼.
³Category D, 900-2¾.

COATESVILLE, PA

CHESTER COUNTY
G O CARLSON (MQS).....**ILS or LOC Rwy 29**
RNAV (GPS) Rwy 11
RNAV (GPS) Rwy 29

NA when local weather not available.

DOYLESTOWN, PA

DOYLESTOWN (DYL).....**RNAV (GPS) Rwy 5**
RNAV (GPS) Rwy 23
VOR/DME Rwy 23

NA when local weather not available.

NAME ALTERNATE MINIMUMS

DUBOIS, PA

DUBOIS RGNL (DUJ).....**ILS or LOC Rwy 25**
RNAV (GPS) Rwy 7¹
RNAV (GPS) Rwy 25¹
VOR/DME Rwy 7

NA when local weather not available.
¹Category D, 900-2½.

ELKINS, WV

ELKINS-RANDOLPH COUNTY-JENNINGS
RANDOLPH FIELD (EKN).....**LDA-C¹**
RNAV (GPS) Rwy 5²
RNAV (GPS) Rwy 23³
RNAV (GPS)-A⁴

NA when local weather not available.
¹Categories A, B, 1200-2; Category C, 1800-3; Category D, 2100-3.
²Categories A, B, 1400-2; Category C, 1800-3; Category D, 2100-3.
³Categories A, B, 1200-2; Category C, 1800-3; Category D, 1200-3.
⁴Categories A, B, 1700-2; Category C, 1800-3.

ERIE, PA

ERIE INTL/TOM RIDGE
FIELD (ERI).....**ILS or LOC Rwy 6¹**
ILS or LOC Rwy 24¹
RNAV (GPS) Rwy 6
RNAV (GPS) Rwy 24

NA when local weather not available.
¹NA when control tower closed.

FRANKLIN, PA

VENANGO
RGNL (FKL).....**RNAV (GPS) Rwy 3**
VOR Rwy 21

NA when local weather not available.

HARRISBURG, PA

CAPITAL CITY (CXY).....**ILS or LOC Rwy 8¹²³**
RNAV (GPS) Rwy 8²⁵
RNAV (GPS) Rwy 26³⁴

¹Categories A, 1000-2; Category B, 1400-2; Categories C, D, 1400-3.
²NA when control tower closed.
³NA when local weather not available.
⁴Category A, 1200-2, Category B, 1400-2; Categories C, D, 1400-3.
⁵Category A, 900-2; Category B, 1400-2; Categories C, D, 1400-3.

HARRISBURG

INTL (MDT).....**ILS or LOC Rwy 31¹**
RNAV (GPS) Rwy 13²
RNAV (GPS) Rwy 31³
VOR Rwy 31²

¹LOC, Category D, 800-2¼.
²Categories A,B, 900-2; Category C, 900-2½; Category D, 900-2¾.
³Category C, 800-2¼; Category D, 800-2½.

16 JUL 2020 to 13 AUG 2020

16 JUL 2020 to 13 AUG 2020

NAME ALTERNATE MINIMUMS

HAZLETON, PA

HAZLETON RGNL (HZL).....RNAV (GPS) Rwy 10
RNAV (GPS) Rwy 28
Category C, 900-2½; Category D, 1000-3.

HUNTINGTON, WV

TRI-STATE/MILTON J FERGUSON
FIELD (HTS).....ILS or LOC Rwy 12¹
ILS or LOC Rwy 30¹
RNAV (GPS) Rwy 30²

¹LOC, Category D, 1000-3.
²Category D, 1000-3.

INDIANA, PA

INDIANA COUNTY/JIMMY STEWARD
FLD (IDI).....RNAV (GPS) Rwy 11
RNAV (GPS) Rwy 29

NA when local weather not available.
Categories C, D, 1300-3.

JOHNSTOWN, PA

JOHN MURTHA JOHNSTOWN-CAMBRIA
COUNTY (JST).....ILS or LOC Rwy 33¹²³
RNAV (GPS) Rwy 5⁴
RNAV (GPS) Rwy 15⁴
RNAV (GPS) Rwy 23⁴
RNAV (GPS) Rwy 33⁴
VOR Rwy 5²⁴
VOR Y Rwy 15²⁵
VOR Y Rwy 23⁴
VOR Z Rwy 23⁴

¹NA when control tower closed.
²NA when local weather not available.
³LOC, Category D, 800-2¼.
⁴Category D, 800-2¼.
⁵Categories A, B, 1000-2;
Categories C, D, 1000-3.

LANCASTER, PA

LANCASTER (LNS).....ILS or LOC Rwy 8¹²³
RNAV (GPS) Rwy 8¹²
RNAV (GPS) Rwy 13²
RNAV (GPS) Rwy 26²
RNAV (GPS) Rwy 31²
VOR/DME Rwy 31²⁴
VOR/DME Rwy 8²
VOR/DME Rwy 26²⁴
VOR Rwy 8²⁵
VOR Rwy 31⁴

¹NA when control tower closed.
²NA when local weather not available.
³ILS, Categories A, B, C, 700-2; Category D, 700-2¼. LOC, Category D, 800-2¼.
⁴Category D, 800-2¼.
⁵Categories A, B, 1000-2; Categories C, D, 1000-3.

NAME ALTERNATE MINIMUMS

LATROBE, PA

ARNOLD PALMER
RGNL (LBE).....ILS or LOC Rwy 24¹²
RNAV (GPS) Rwy 6³
RNAV (GPS) Rwy 24³

¹NA when control tower closed.
²LOC, Categories A, B, 1200-2; Categories C, D, 1200-3.
³Category C, 900-2½; Category D, 900-2¼.

LEHIGHTON, PA

JAKE ARNER
MEMORIAL (22N).....RNAV (GPS) Rwy 8¹
RNAV (GPS) Rwy 26²

¹Categories A, B, 1100-2.
²Categories A, B, 1000-2.

LEWISBURG, WV

GREENBRIER
VALLEY (LWB).....ILS or LOC Rwy 4¹²
RNAV (GPS) Rwy 4¹³
RNAV (GPS) Rwy 22⁴

¹NA when local weather not available.
²LOC, Category C, 1000-3; Category D, 1400-3.
³Category C, 1000-3; Category D, 1400-3.
⁴Category C, 1000-3; Category D, 1300-3.

LOGAN, WV

LOGAN
COUNTY (6L4).....RNAV (GPS) Rwy 6¹
RNAV (GPS) Rwy 24

Category C, 1100-3.
¹NA when local weather not available.

MARTINSBURG, WV

EASTERN WEST VIRGINIA RGNL/
SHEPHERD FLD (MRB).....ILS or LOC Rwy 26¹²
RNAV (GPS) Rwy 8³
RNAV (GPS) Rwy 26¹⁴
VOR-A¹³

¹NA when local weather not available.
²ILS, LOC, Category D, 900-2¾;
Category E, 1600-3.
³Category D, 800-2¼; Category E, 1600-3.
⁴Category D, 900-2¾; Category E, 1600-3.

MEADVILLE, PA

PORT MEADVILLE (GKJ).....LOC Rwy 25¹
RNAV (GPS) Rwy 7
RNAV (GPS) Rwy 25

Category B, 900-2; Category C, 900-2½;
Category D, 900-2¾.
¹NA when local weather not available.

16 JUL 2020 to 13 AUG 2020

16 JUL 2020 to 13 AUG 2020

20198

NAME ALTERNATE MINIMUMS

MORGANTOWN, WV

MORGANTOWN MUNI-WALTER L BILL
HART FIELD (MGW).....**ILS or LOC Rwy 18**¹²
RNAV (GPS) Y Rwy 18³⁴
RNAV (GPS) Z Rwy 18³⁴
RNAV (GPS) Rwy 36⁴

- ¹NA when control tower closed.
- ²LOC, Category C, 1000-2¼; Category D, 1400-3.
- ³NA when local weather not available.
- ⁴Category C, 1000-2¼; Category D, 1400-3.

MOUNT POCONO, PA

POCONO MOUNTAINS
MUNI (MPO).....**RNAV (GPS) Rwy 5**
RNAV (GPS) Rwy 13
RNAV (GPS) Rwy 31
VOR/DME Rwy 13

- NA when local weather not available.
- Category D, 800-2¼.

MUIR AAF (MUI)

FORT INDIANTOWN GAP, PA.....**NDB-A**¹
RNAV (GPS)-B²³
COPTER NDB Y-289¹
COPTER NDB Z-289¹
COPTER RNAV (GPS) Rwy 25¹

- ¹NA when control tower closed.
- ²NA when local weather not available.
- ³Categories A, B, 1000-2; Category C, 1000-2¼.

PARKERSBURG, WV

MID-OHIO VALLEY
RGNL (PKB).....**RNAV (GPS) Rwy 3**
RNAV (GPS) Rwy 10
RNAV (GPS) Rwy 21
RNAV (GPS) Rwy 28

- NA when local weather not available.

PHILADELPHIA, PA

NORTHEAST
PHILADELPHIA (PNE).....**ILS or LOC Rwy 24**¹²
LOC BC Rwy 6¹
RNAV (GPS) Rwy 6
RNAV (GPS) Rwy 15
RNAV (GPS) Rwy 24¹
RNAV (GPS) Rwy 33

- NA when local weather not available.
- ¹NA when control tower closed.
- ²ILS, Category D, 700-2.

NAME ALTERNATE MINIMUMS

PHILADELPHIA, PA (CON'T)

PHILADELPHIA
INTL (PHL).....**ILS or LOC Rwy 9L**¹
ILS Z or LOC Z Rwy 9R²
ILS Z or LOC Rwy 17²
ILS or LOC Rwy 26³
ILS or LOC Rwy 27L⁴⁶
RNAV (GPS) Rwy 27L⁵
RNAV (GPS) Rwy 27R⁵
RNAV (GPS) Rwy 35⁵⁶
RNAV (GPS) Y Rwy 9R⁵

- ¹ILS, Categories A, B, 800-2; Category C, 800-2¼; Category D, 800-2½. LOC, Category C, 800-2¼; Category D, 800-2½.
- ²ILS, Categories A, B, C, 800-2; Category D, 800-2¼. LOC, Category D, 800-2¼.
- ³ILS, Categories A, B, C, 700-2.
- ⁴LOC, Category D, 800-2¼.
- ⁵Category D, 800-2¼.
- ⁶NA when local weather not available.

WINGS FIELD (LOM).....**RNAV (GPS) Rwy 6**
RNAV (GPS) Rwy 24

- NA when local weather not available.

PITTSBURGH, PA

ALLEGHENY
COUNTY (AGC).....**ILS or LOC Rwy 10**
ILS, Category C, 800-2; Category D, 800-2¼. LOC,
Category D, 800-2¼.

PITTSBURGH

INTL (PIT).....**ILS or LOC Rwy 10L**¹
ILS or LOC Rwy 10R²
ILS or LOC Rwy 28L¹
ILS or LOC Rwy 28R¹
ILS or LOC Rwy 32¹
RNAV (GPS) Rwy 10L³
RNAV (GPS) Rwy 14³
RNAV (GPS) Y Rwy 10C³
RNAV (GPS) Y Rwy 10R³
RNAV (GPS) Y Rwy 28C³
RNAV (GPS) Y Rwy 28L³
RNAV (GPS) Y Rwy 28R³
RNAV (GPS) Y Rwy 32³

- ¹LOC, Category D, 800-2¼, Category E, 800-2½.
- ²ILS, Category C, 700-2; Category D, 700-2¼.
- Category E, 700-2½. LOC, Category D, 800-2¼, Category E, 800-2½.
- ³Category D, 800-2¼.

POINT PLEASANT, WV

MASON COUNTY (3I2).....**RNAV (GPS) Rwy 7**¹
RNAV (GPS) Rwy 25²

- NA when local weather not available.
- ¹Categories A, B, 1300-2; Category C, D, 1300-3.
- ²Category A, B, 1100-2; Category C, D, 1100-3.

16 JUL 2020 to 13 AUG 2020

16 JUL 2020 to 13 AUG 2020

20198

NAME ALTERNATE MINIMUMS

POTTSTOWN, PA

HERITAGE FIELD (PTW).....**LOC Rwy 28**
RNAV (GPS)-A
RNAV (GPS) Rwy 28
VOR/DME-A

NA when local weather not available.

QUAKERTOWN, PA

QUAKERTOWN (UKT).....**RNAV (GPS) Rwy 11**
RNAV (GPS) Rwy 29

NA when local weather not available.

READING, PA

READING RGNL/CARL A.
SPAATZ FIELD (RDG).....**ILS or LOC Rwy 13¹³**
ILS or LOC Rwy 36¹³
RNAV (GPS) Rwy 13²
RNAV (GPS) Rwy 18²
RNAV (GPS) Rwy 36²

NA when local weather not available.

¹ILS, Categories A, B, C, 700-2; Category D, 800-2½. LOC, Category D, 800-2½.

²Category D, 800-2½.

³NA when control tower closed.

SELINGROVE, PA

PENN VALLEY (SEG).....**RNAV (GPS) Rwy 17¹**
RNAV (GPS) Rwy 35²
VOR-A³

¹Categories A, B, 1000-2; Category C, 1000-3; Category D, 1200-3.

²Categories A, B, 1400-2; Categories C, D, 1400-3.

³Categories A, B, 1000-2.

SOMERSET, PA

SOMERSET COUNTY (2G9).....**LOC Rwy 25¹**
NDB Rwy 25²

¹Categories C, D, 1300-3.

²Categories A, B, 1000-2; Categories C, D, 1300-3.

STATE COLLEGE, PA

UNIVERSITY
PARK (UNV).....**ILS or LOC Rwy 24¹**
RNAV (GPS) Rwy 6²
RNAV (GPS) Rwy 24²

¹ILS, Category C, 800-2; Category D, 1400-3; LOC, Category D, 1400-3.

²Category D, 1400-3.

WASHINGTON, PA

WASHINGTON
COUNTY (AFJ).....**ILS OR LOC Rwy 27³**
RNAV (GPS) Rwy 9¹
RNAV (GPS) Rwy 27²

NA when local weather not available.

¹Category D, 900-2¾.

²Category C, 800-2½, Category D, 900-2¾.

³ILS, Categories A, B, 800-2; Category C, 800-2½; Category D, 900-2¾. LOC, Category C, 800-2½; Category D 900-2¾.

NAME ALTERNATE MINIMUMS

WELLSBORO, PA

WELLSBORO
JOHNSTON (N38).....**RNAV (GPS) Rwy 10¹**
RNAV (GPS) Rwy 28²
VOR-A³⁴

¹Categories A, B, 900-2; Category C, 900-2½.

²Category C, 900-2½.

³Categories A, B, 1100-2; Category C, 1100-3.

⁴NA when local weather not available.

WHEELING, WV

WHEELING OHIO
COUNTY (HLG).....**ILS or LOC Rwy 3¹**
RNAV (GPS) Rwy 3²
RNAV (GPS) Rwy 16²
RNAV (GPS) Rwy 21²
RNAV (GPS) Rwy 34²
VOR Rwy 21²³

¹ILS, Categories A, B, 700-2; Category C, 800-2; Category D, 800-2¼; LOC, Category D, 800-2¼.

²Category D, 800-2¼.

³NA when local weather not available.

WILKES-BARRE/SCRANTON, PA

WILKES-BARRE/SCRANTON
INTL (AVP).....**ILS or LOC Rwy 4¹**
ILS or LOC Rwy 22²
RNAV (GPS) Rwy 4³
RNAV (GPS) Rwy 22³

¹ILS, LOC, Category A, 900-2; Category B, 1100-2; Category C, 1100-3; Category D, 1400-3.

²LOC, Category A, 900-2; Category B, 1100-2; Category C, 1100-3; Category D, 1400-3.

³Category A, 900-2; Category B, 1100-2; Category C, 1100-3; Category D, 1400-3.

WILLIAMSPORT, PA

WILLIAMSPORT
RGNL (IPT).....**ILS or LOC Rwy 27¹²**
RNAV (GPS) Rwy 9³
RNAV (GPS) Rwy 12⁴
RNAV (GPS) Rwy 27⁵
RNAV (GPS) Rwy 30⁶

¹NA when local control tower closed.

²ILS, LOC, Categories A, B, 1000-2; Category C, 1400-3; Category D, 1600-3.

³Categories A, B, 1600-2; Category C, 1600-3.

⁴Category A, 900-2; Category B, 1000-2.

⁵Categories A, B, 1800-2; Categories C, D, 1800-3;

⁶Categories A, B, 1500-2.

YORK, PA

YORK (THV).....**RNAV (GPS) Rwy 17**
RNAV (GPS) Rwy 35

Category C, 800-2¼; Category D, 800-2½.

16 JUL 2020 to 13 AUG 2020

16 JUL 2020 to 13 AUG 2020