

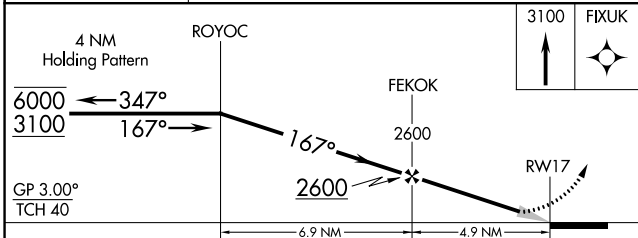
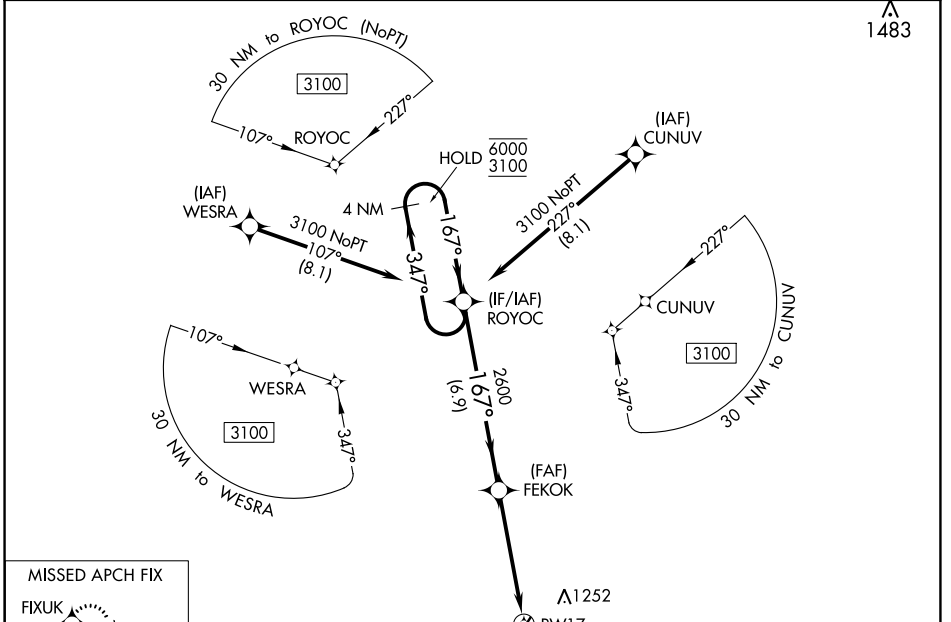
WAAS CH <b>97336</b> <b>W17A</b>	APP CRS <b>167°</b>	Rwy Idg TDZE Apt Elev	<b>4000</b> <b>1010</b> <b>1010</b>
--	------------------------	-----------------------------	---

# RNAV (GPS) RWY 17

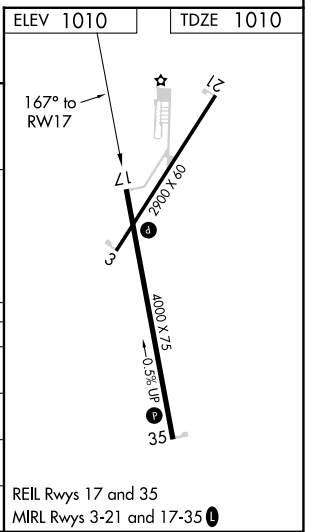
LAMAR MUNI (LLU)

RNP APCH.	MISSED APPROACH: Climb to 3100 direct FIXUK and hold.
<p>⚠ Circling Rwy 21 NA at night. Baro-VNAV NA.                  ⚠ NA Use Joplin altimeter setting.</p>	

JLN ASOS <b>120.85</b>	KANSAS CITY CENTER <b>128.6 282.325</b>	CTAF <b>122.9</b>
---------------------------	--	----------------------



CATEGORY	A	B	C	D
LPV DA	1315-1	305 (400-1)		NA
LNAV/VNAV DA	1367-1¼	357 (400-1¼)		NA
LNAV MDA	1520-1	510 (600-1)	1520-1⅜ 510 (600-1⅜)	NA
CIRCLING	1520-1 510 (600-1)	1620-1 610 (700-1)	1620-1¾ 610 (700-1¾)	NA



NC-3, 23 MAR 2023 to 20 APR 2023

NC-3, 23 MAR 2023 to 20 APR 2023

WAAS CH <b>45536</b> <b>W03A</b>	APP CRS <b>031°</b>	Rwy Idg TDZE Apt Elev	<b>2900</b> <b>1007</b> <b>1010</b>
--	------------------------	-----------------------------	---

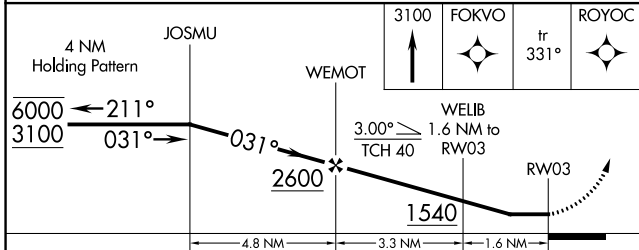
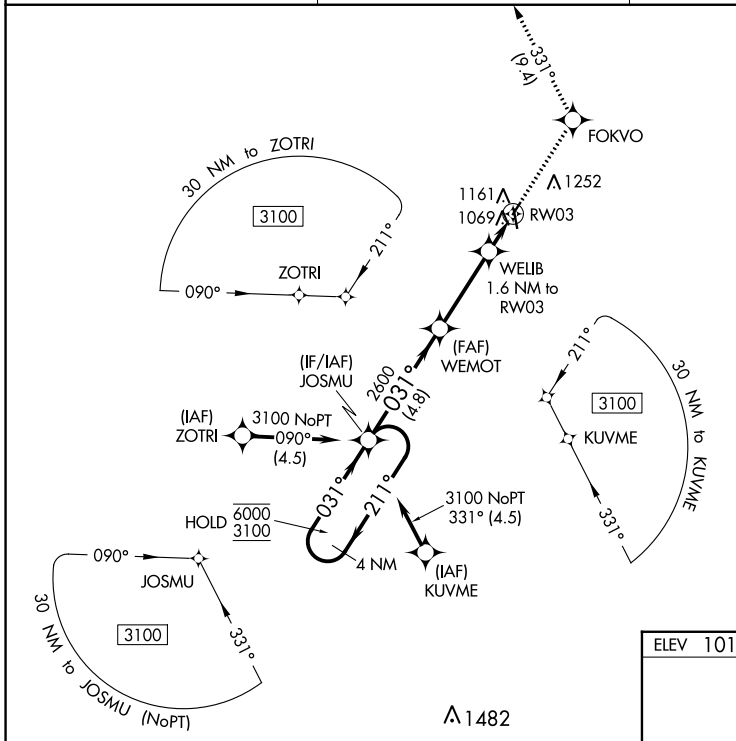
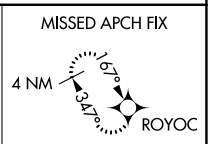
# RNAV (GPS) RWY 3

LAMAR MUNI (L.L.U)

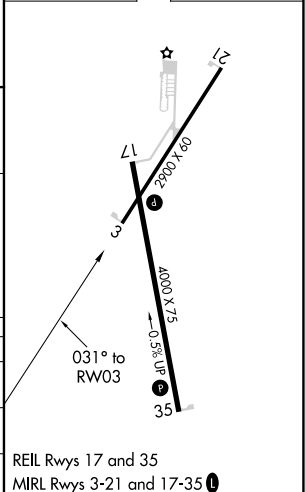
RNP APCH.  
 ▼ Circling Rwy 21 NA at night. Use Joplin altimeter setting.  
 ▲ NA Rwy 3 helicopter visibility reduction below ¼ SM NA.

MISSED APPROACH: Climb to 3100 direct FOKVO and on track 331° to ROYOC and hold.

JLN ASOS <b>120.85</b>	KANSAS CITY CENTER <b>128.6 282.325</b>	CTAF <b>122.9</b>
---------------------------	--	----------------------



ELEV 1010	TDZE 1007
-----------	-----------



CATEGORY	A	B	C	D
LP MDA	1380-1	373 (400-1)	NA	
LNAV MDA	1480-1	473 (500-1)	NA	
<b>C</b> CIRCLING	1520-1 510 (600-1)	1620-1 610 (700-1)	NA	

REIL Rwy 17 and 35  
MIRL Rwy 3-21 and 17-35

NC-3, 23 MAR 2023 to 20 APR 2023

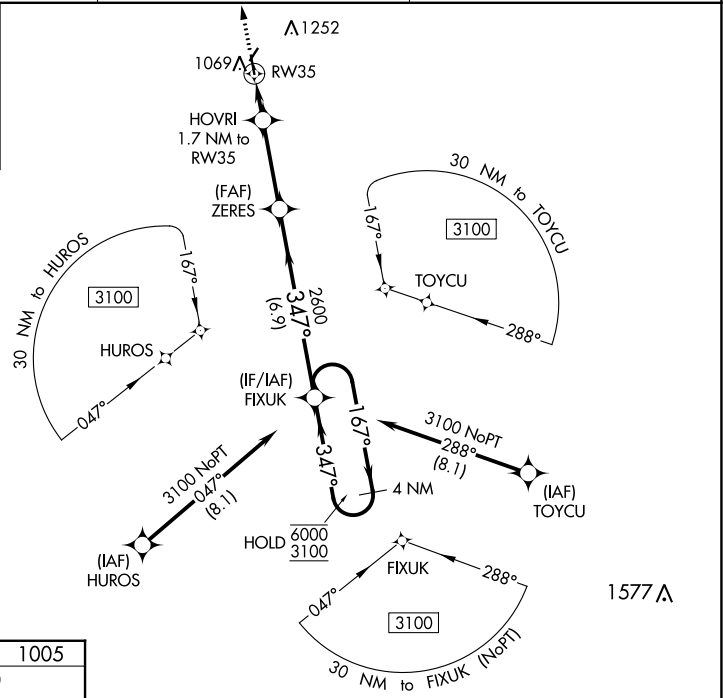
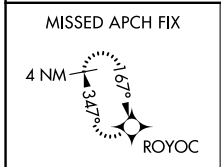
NC-3, 23 MAR 2023 to 20 APR 2023

WAAS CH <b>77536</b> <b>W35A</b>	APP CRS <b>347°</b>	Rwy Idg TDZE Apt Elev	<b>4000</b> <b>1005</b> <b>1010</b>
--	------------------------	-----------------------------	---

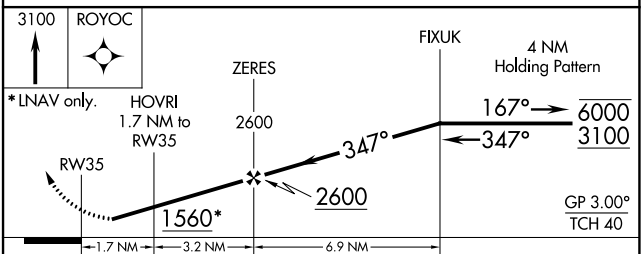
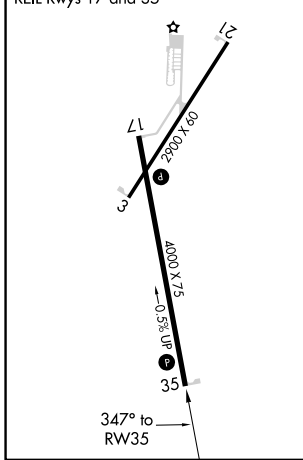
# RNAV (GPS) RWY 35

LAMAR MUNI (LLU)

RNP APCH.		MISSED APPROACH: Climb to 3100 direct ROYOC and hold.
▼ Rwy 35 helicopter visibility reduction below 3/4 SM NA. Baro-VNAV NA. ▲ NA Use Joplin altimeter setting. Circling Rwy 21 NA at night.		
JLN ASOS <b>120.85</b>	KANSAS CITY CENTER <b>128.6 282.325</b>	CTAF <b>122.9</b>



ELEV 1010	TDZE 1005
MIRL Rwy 3-21 and 17-35	REIL Rwy 17 and 35



CATEGORY	A	B	C	D
LPV DA	1310-1	305 (300-1)		NA
LNAV/VNAV DA	1310-1	305 (300-1)		NA
LNAV MDA	1380-1	375 (400-1)		NA
<b>C</b> CIRCLING	1520-1 510 (600-1)	1620-1 610 (700-1)	1620-1 3/4 610 (700-1 3/4)	NA

NC-3, 23 MAR 2023 to 20 APR 2023

NC-3, 23 MAR 2023 to 20 APR 2023