

WAAS CH <b>77829</b> <b>W29A</b>	APP CRS <b>293°</b>	Rwy Idg TDZE Apt Elev	<b>5249</b> <b>574</b> <b>574</b>
--	------------------------	-----------------------------	---

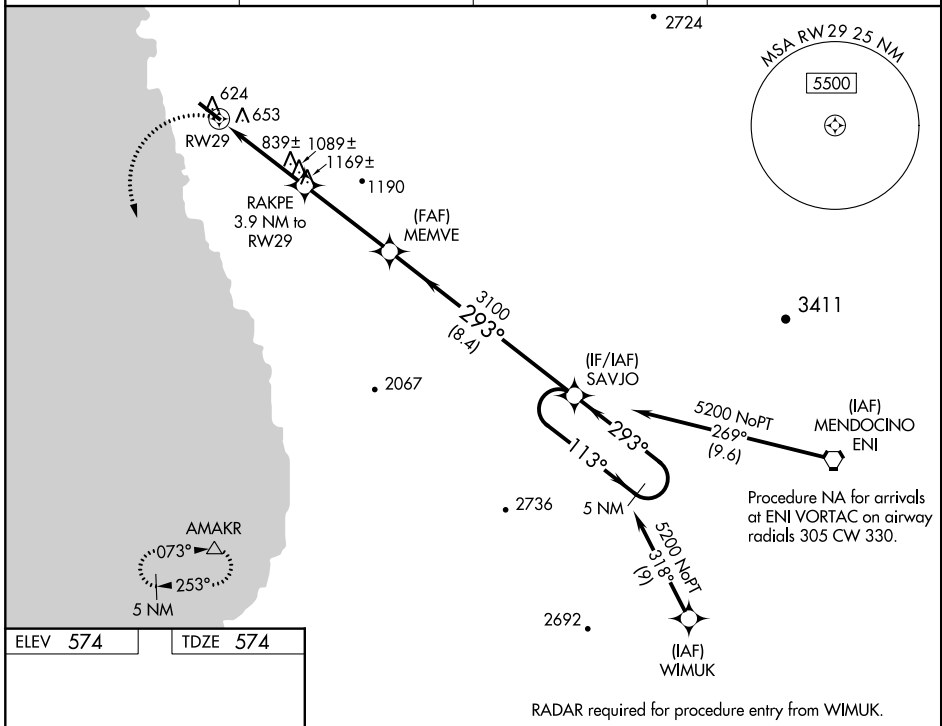
# RNAV (GPS) RWY 29

LITTLE RIVER (LLR)

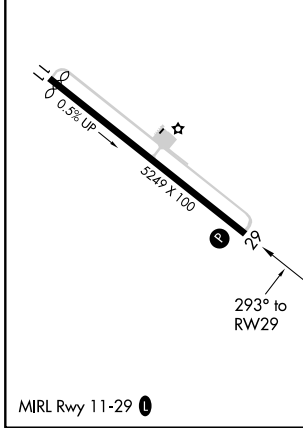
**▼** DME/DME RNP-0.3 NA. Helicopter visibility reduction below 1 SM NA. Use Ukiah altimeter setting; when not received, procedure NA. Circling NA northeast of Rwy 11-29. Procedure NA at night.

**▲** NA MISSED APPROACH: Climbing left turn to 6000 direct AMAKR and hold, continue climb-in-hold to 6000.

AWOS-AV <b>121.125</b>	UKIAH ASOS <b>119.275</b>	OAKLAND CENTER <b>132.2 350.3</b>	AUNICOM <b>122.7 (CTAF) 0</b>
---------------------------	------------------------------	--------------------------------------	----------------------------------



ELEV 574	TDZE 574
----------	----------



RADAR required for procedure entry from WIMUK.

6000	AMAKR	VGSI and descent angles not coincident (VGSI Angle 3.50/TCH 42).	5 NM Holding Pattern
		SAVJO	
		MEMVE	
		RAKPE 3.9 NM to RWY 29	
		RWY 29	
		3.9 NM	3.9 NM
		8.4 NM	
CATEGORY	A	B	C
LP MDA	1160-1	586 (600-1)	1160-1¾ 586 (600-1¾)
LNAV MDA	1420-1 846 (900-1)	1420-1¼ 846 (900-1¼)	1420-2¼ 846 (900-2¼)
CIRCLING	1420-1¼	846 (900-1¼)	1420-2¾ 846 (900-2¾)

SW-2, 11 OCT 2018 to 08 NOV 2018

SW-2, 11 OCT 2018 to 08 NOV 2018