

LOC I-LKU <b>108.55</b>	APP CRS <b>272°</b>	Rwy Idg TDZE Apt Elev	<b>4300</b> <b>494</b> <b>494</b>
----------------------------	------------------------	-----------------------------	---

# LOC RWY 27

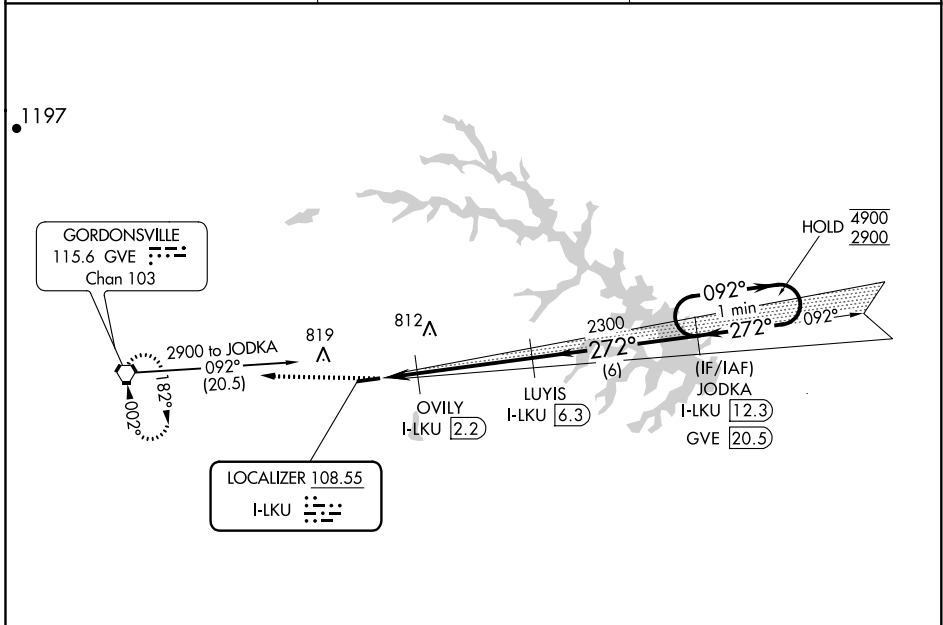
LOUISA COUNTY/FREEMAN FIELD (LKU)

DME required.

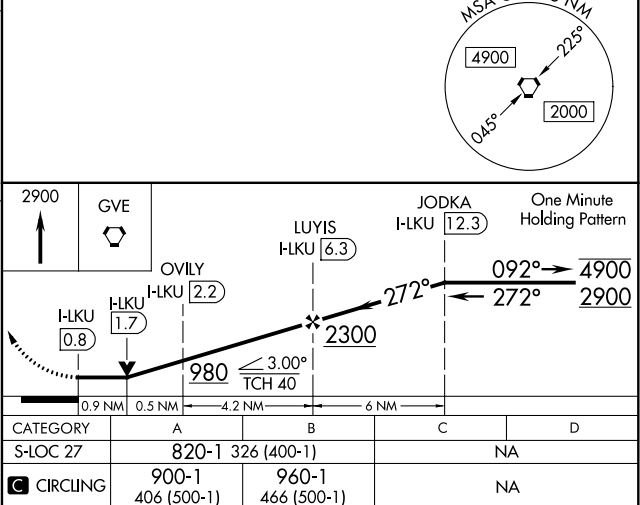
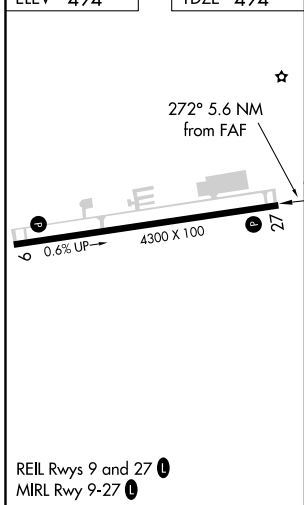
**NA** Circling NA north of Rwy 9-27. When local altimeter setting not received, use Orange altimeter setting and increase all MDA 40 feet. VDP NA when using Orange altimeter setting.

**MISSED APPROACH:**  
Climb to 2900 direct  
GVE VORTAC and hold.

AWOS-3 <b>119.475</b>	POTOMAC APP CON <b>132.85 323.125</b>	UNICOM <b>122.975 (CTAF) 0</b>
--------------------------	--	-----------------------------------



ELEV 494	TDZE 494
----------	----------



NE-3, 15 JUL 2021 to 12 AUG 2021

NE-3, 15 JUL 2021 to 12 AUG 2021

WAAS CH <b>58318</b> <b>W27A</b>	APP CRS <b>272°</b>	Rwy Idg TDZE <b>494</b> Apt Elev <b>494</b>
--	------------------------	---

# RNAV (GPS) RWY 27

LOUISA COUNTY/FREEMAN FIELD (LKU)

RNP APCH

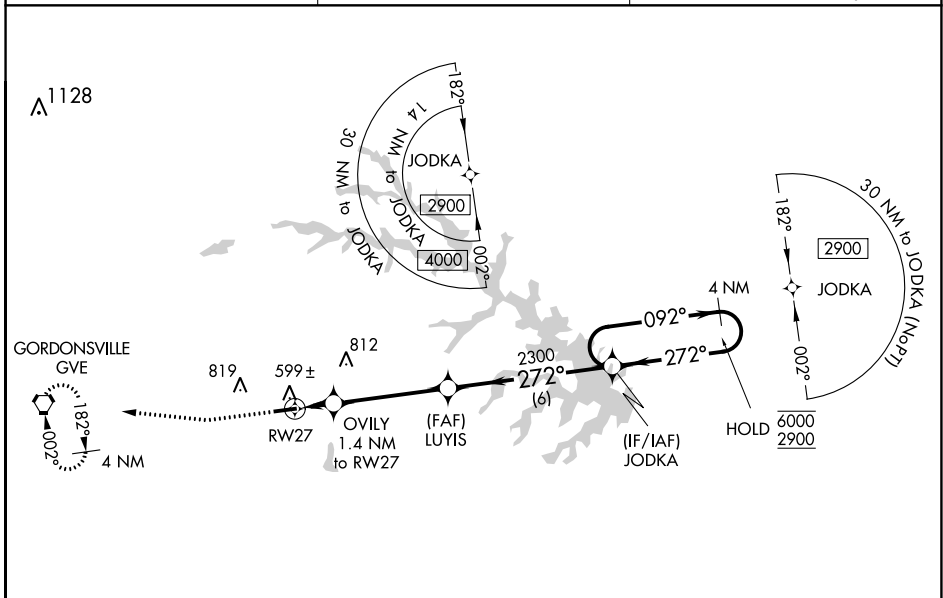
**⚠** Circling NA north of Rwy 9-27. Baro-VNAV NA when using Orange altimeter setting. For uncompensated Baro-VNAV systems, LNAV/VNAV NA below -15°C or above 54°C. When local altimeter setting not received, use Orange altimeter setting and increase all DA to 780 feet and all MDA 40 feet and increase LPV and LNAV/VNAV visibility  $\frac{1}{8}$  SM.

**MISSED APPROACH:** Climb to 1000 then climbing right turn to 2900 direct GVE VORTAC and hold, continue climb-in-hold to 2900.

AWOS-3  
**119.475**

POTOMAC APP CON  
**132.85 323.125**

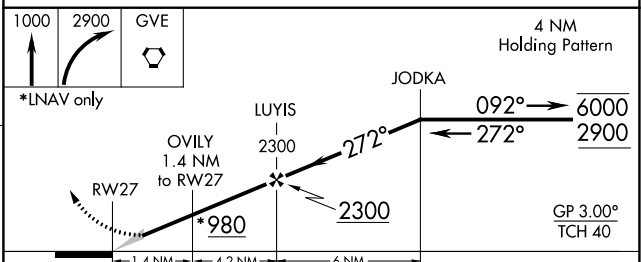
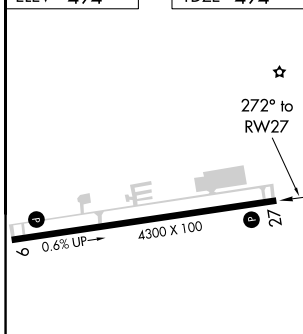
UNICOM  
**122.975 (CTAF) 0**



NE-3, 15 JUL 2021 to 12 AUG 2021

NE-3, 15 JUL 2021 to 12 AUG 2021

ELEV <b>494</b>	TDZE <b>494</b>
-----------------	-----------------



CATEGORY	A	B	C	D
LPV DA	744- $\frac{3}{4}$	250 (300- $\frac{3}{4}$ )		NA
LNAV/VNAV DA	744- $\frac{3}{4}$	250 (300- $\frac{3}{4}$ )		NA
LNAV MDA	860-1	366 (400-1)		NA
CIRCLING	900-1	960-1		
	406 (500-1)	466 (500-1)		NA

WAAS CH <b>48843</b> <b>W09A</b>	APP CRS <b>092°</b>	Rwy Idg <b>4300</b> TDZE <b>489</b> Apt Elev <b>494</b>
--	------------------------	---

# RNAV (GPS) RWY 9

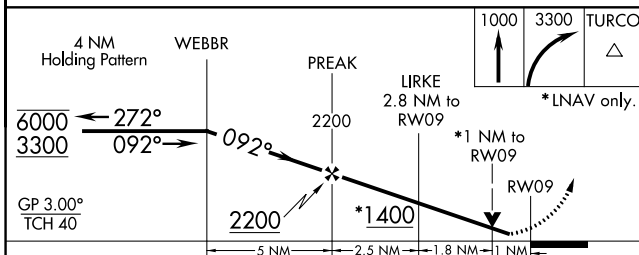
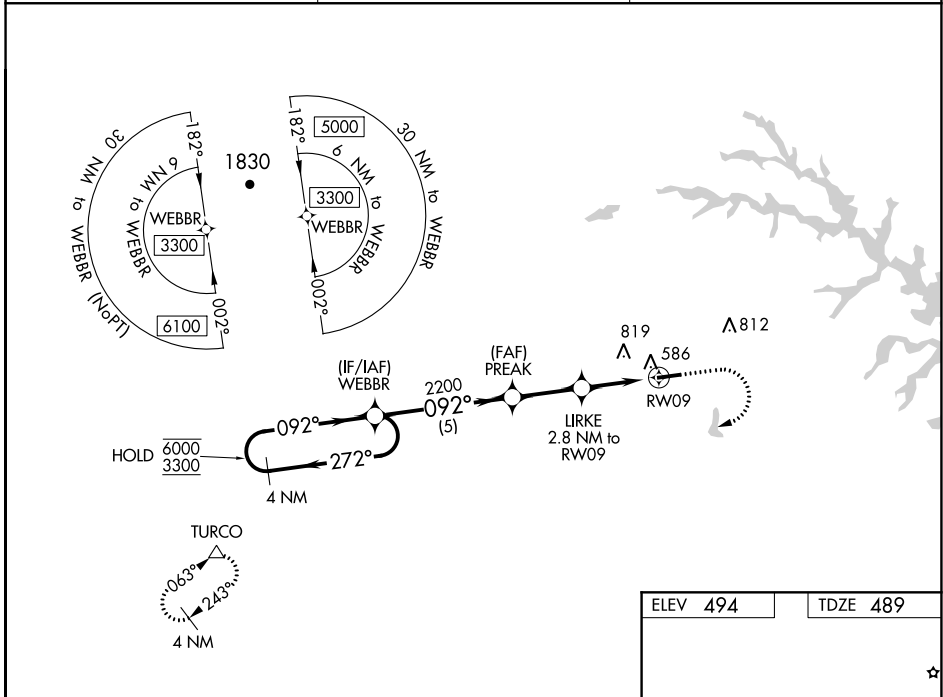
LOUISA COUNTY/FREEMAN FIELD (LKU)

RNP APCH.

▼ Circling NA north of Rwy 9-27. Rwy 9 helicopter visibility reduction below 3/4 SM NA.  
 ▲ For uncompensated Baro-VNAV systems, LNAV/VNAV NA below -15°C or above 54° C.  
 When local altimeter setting not received, use Orange altimeter setting and increase LPV DA to 775 feet, LNAV/VNAV DA to 784 feet and MDA 40 feet; increase LPV and LNAV/VNAV visibility 1/2 SM. Baro-VNAV and VDP NA when using Orange altimeter setting.

MISSED APPROACH: Climb to 1000 then climbing right turn to 3300 direct TURCO and hold.

AWOS-3 <b>119.475</b>	POTOMAC APP CON <b>132.85 323.125</b>	UNICOM <b>122.975</b> (CTAF) <b>1</b>
--------------------------	--	--



ELEV 494	TDZE 489
----------	----------

Detailed view of RWY 9 showing runway dimensions (4300 X 100) and altitudes (586, 494, 489). The diagram also shows the missed approach procedure: a climbing right turn to 1000 feet, then a right turn to 3300 feet and direct to TURCO. The diagram also shows a 4 NM holding pattern at TURCO with altitudes of 063° and 243°.

REIL Rwy 9 and 27 **1**  
MIRL Rwy 9-27 **1**

CATEGORY	A	B	C	D
LPV DA	739-3/4	250 (300-3/4)		NA
LNAV/VNAV DA	748-3/4	259 (300-3/4)		NA
LNAV MDA	840-1	351 (400-1)		NA
CIRCLING	900-1 406 (500-1)	960-1 466 (500-1)		NA

NE-3, 15 JUL 2021 to 12 AUG 2021

NE-3, 15 JUL 2021 to 12 AUG 2021