


LOC I-LEW <b>108.9</b>	APP CRS <b>041°</b>	Rwy Idg TDZE Apt Elev	<b>5001</b> <b>270</b> <b>288</b>
---------------------------	------------------------	-----------------------------	---

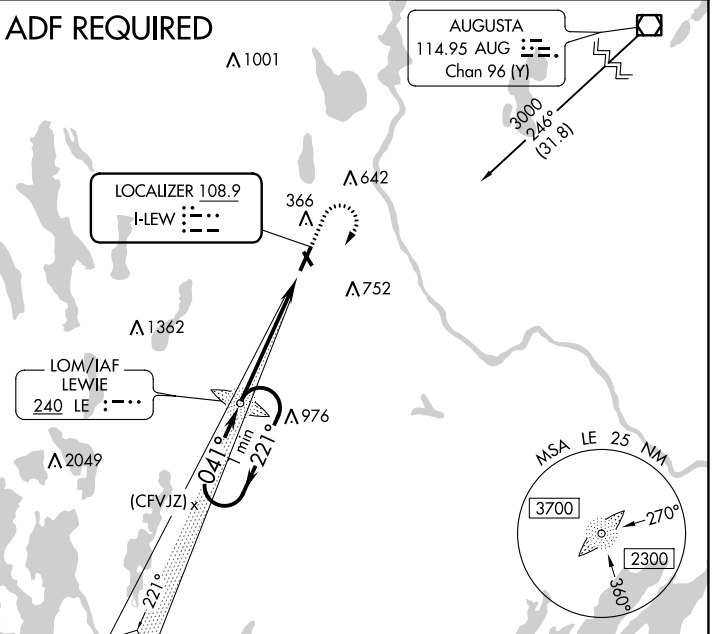
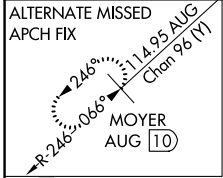
# ILS or LOC RWY 4

AUBURN/LEWISTON MUNI (LEW)

**⚠** Circling to Rwy 17, 22, 35 NA at night.  
 Rwy 4 helicopter visibility reduction below 3/4 SM NA. ADF required.  
 For inop ALS, increase S-LOC 4 Cat A visibility to 1 SM, Cat C/D to 2 1/2 SM.

MALSR  MISSED APPROACH: Climb to 900 then climbing right turn to 2300 direct LEWIE LOM and hold.

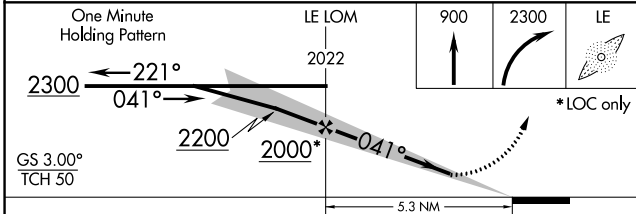
AWOS-3PT <b>118.025</b>	PORTLAND APP CON ★ <b>125.5 353.9</b>	PORTLAND CLNC DEL <b>124.05</b>	UNICOM <b>122.8 (CTAF) 0</b>
----------------------------	--	------------------------------------	---------------------------------



ELEV 288	TDZE 270	
REIL Rwy 22	HIRL Rwy 4-22	MIRL Rwy 17-35

FAF to MAP 5.3 NM

Knots	60	90	120	150	180
Min:Sec	5:18	3:32	2:39	2:07	1:46



CATEGORY	A	B	C	D
S-ILS 4		470-1/2	200 (200-1/2)	
S-LOC 4		1040-3/4	770 (800-3/4)	
<b>C</b> CIRCLING	1040-1 752 (800-1)	1040-1 1/4 752 (800-1 1/4)	1060-2 1/2 772 (800-2 1/2)	1120-2 3/4 832 (900-2 3/4)

NE-1, 30 DEC 2021 to 27 JAN 2022

NE-1, 30 DEC 2021 to 27 JAN 2022

WAAS CH <b>78019</b> <b>W22A</b>	APP CRS <b>221°</b>	Rwy Idg TDZE Apt Elev	<b>5001</b> <b>270</b> <b>288</b>
--	------------------------	-----------------------------	---

# RNAV (GPS) RWY 22

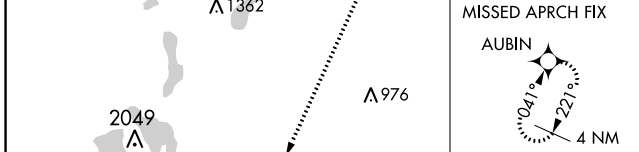
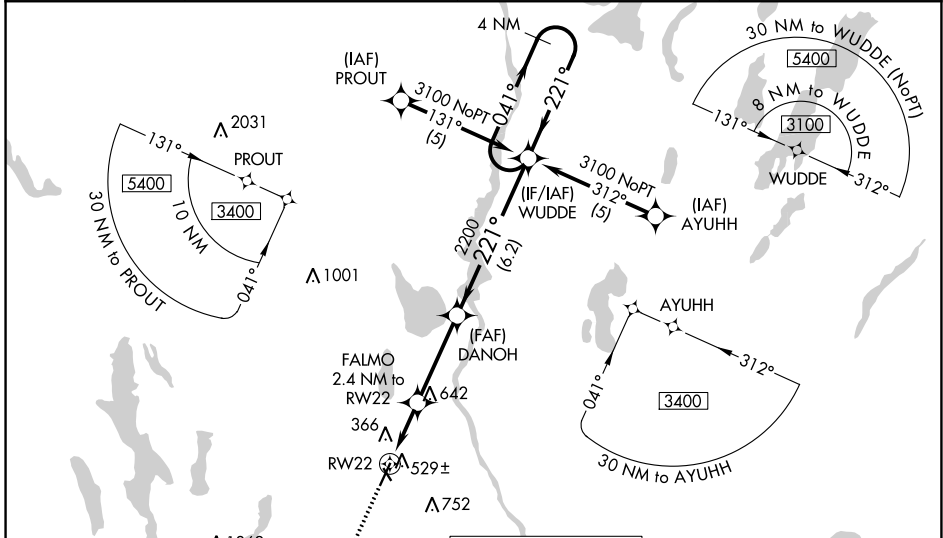
AUBURN/LEWISTON MUNI (LEW)

RNP APCH.

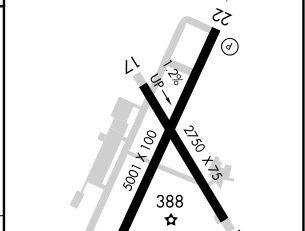
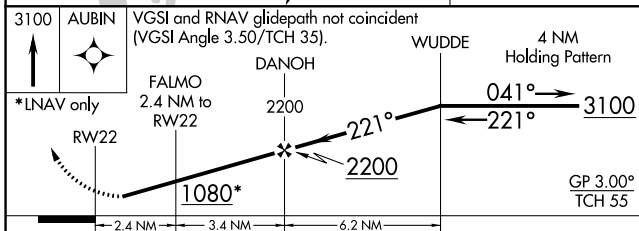
**▼** Procedure NA at night. For uncompensated Baro-VNAV systems, LNAV/VNAV NA below -15°C or above 48°C. Rwy 22 helicopter visibility reduction below 1 SM NA. When local altimeter setting not received, use Augusta altimeter setting: increase LPV all Cats DA to 617 feet and all Cats visibility ½ SM; LNAV/VNAV all Cats DA to 938 feet and all Cats visibility ½ SM; increase all MDA 80 feet and LNAV Cat C/D visibility ⅓ SM. Baro-VNAV NA when using Augusta altimeter setting.

**▲** MISSED APPROACH: Climb to 3100 direct AUBIN and hold.

AWOS-3PT <b>118.025</b>	PORTLAND APP CON ★ <b>125.5 353.9</b>	PORTLAND CLNC DEL <b>124.05</b>	UNICOM <b>122.8 (CTAF) 0</b>
----------------------------	--	------------------------------------	---------------------------------



ELEV 288	TDZE 270
----------	----------



CATEGORY	A	B	C	D
LPV DA		546-1	276 (300-1)	
LNAV/VNAV DA		867-2	597 (600-2)	
LNAV MDA	780-1	510 (500-1)	780-1 ⅓	510 (500-1 ⅓)

REIL Rwy 22 0  
HIRL Rwy 4-22 0  
MIRL Rwy 17-35 0

NE-1, 30 DEC 2021 to 27 JAN 2022

NE-1, 30 DEC 2021 to 27 JAN 2022

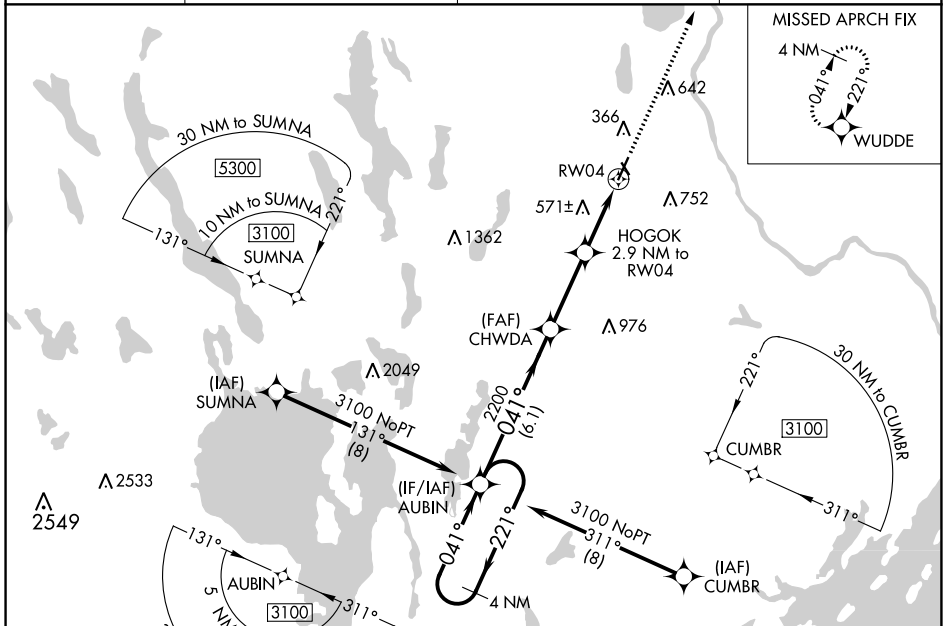
WAAS CH <b>69219</b> <b>W04A</b>	APP CRS <b>041°</b>	Rwy Idg TDZE Apt Elev	<b>5001</b> <b>270</b> <b>288</b>
--	------------------------	-----------------------------	---

# RNAV (GPS) RWY 4

AUBURN/LEWISTON MUNI (LEW)

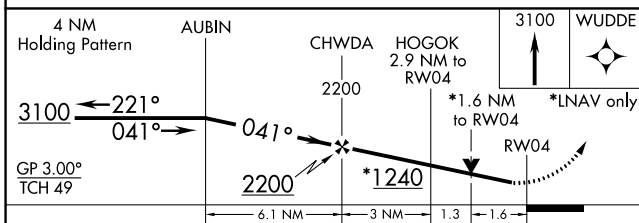
<p><b>⚠</b> Circling to Rwy 17, 22, 35 NA at night. For uncompensated Baro-VNAV systems, LNAV/VNAV NA below -16°C (4°F) or above 54°C (130°F). DME/DME RNP-0.3 NA. For inop ALS, increase visibility LNAV/VNAV all Cats to 1½ SM, LNAV Cat A/B to 1 SM and Cat C/D to 1½ SM. Rwy 04 helicopter visibility reduction below ¾ SM NA.</p>	<p>MALS R</p>	<p>MISSED APPROACH: Climb to 3100 direct WUDD and hold.</p>
	<p>UNICOM <b>122.8</b> (CTAF) <b>0</b></p>	

AWOS-3PT <b>118.025</b>	PORTLAND APP CON ★ <b>125.5 353.9</b>	PORTLAND CLNC DEL <b>124.05</b>	UNICOM <b>122.8</b> (CTAF) <b>0</b>
----------------------------	--	------------------------------------	--

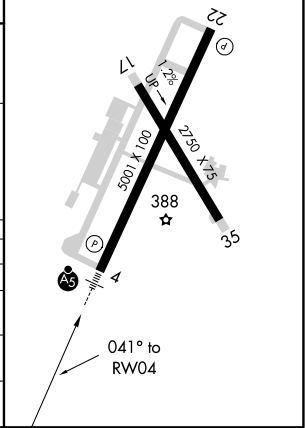


ELEV <b>288</b>	TDZE <b>270</b>
-----------------	-----------------

- REIL Rwy 22 **0**
- HIRL Rwy 4-22 **0**
- MIRL Rwy 17-35 **0**



CATEGORY	A	B	C	D
LPV DA		470-½	200 (200-½)	
LNAV/VNAV DA		780-1	510 (500-1)	
LNAV MDA	840-¾	570 (600-¾)	840-1¼	570 (600-1¼)
<b>C</b> CIRCLING	840-1 552 (600-1)	920-1 632 (700-1)	1060-2¼ 772 (800-2¼)	1120-2¾ 832 (900-2¾)



NE-1, 30 DEC 2021 to 27 JAN 2022

NE-1, 30 DEC 2021 to 27 JAN 2022