

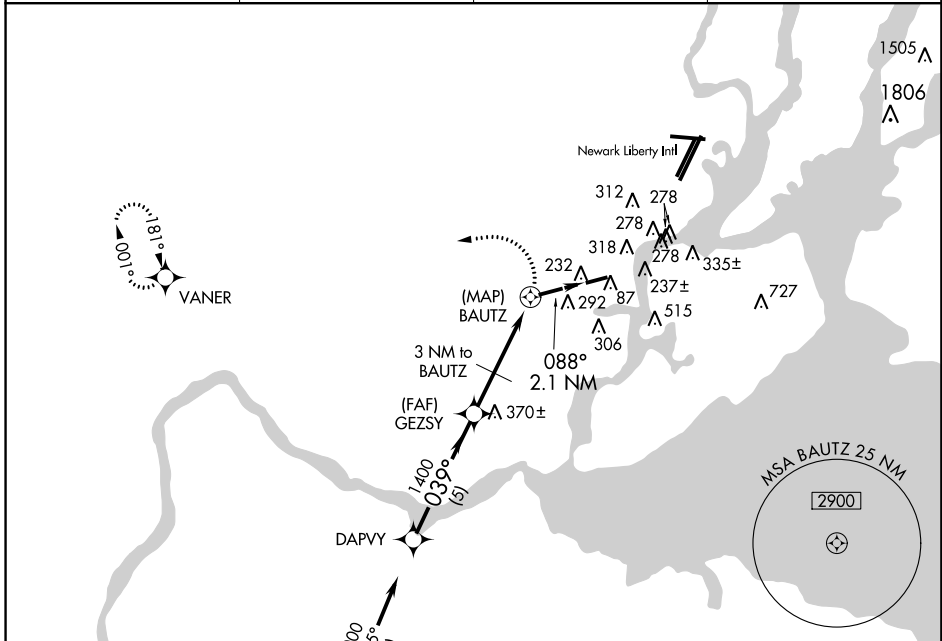
APP CRS <b>039°</b>	Rwy Idg TDZE Apt Elev	<b>N/A</b> <b>N/A</b> <b>23</b>
------------------------	-----------------------------	---------------------------------------

**GPS-A**  
LINDEN (LDJ)

**▼** When local altimeter setting not received, use Newark Liberty Intl altimeter setting. Helicopter visibility reduction below 1 SM NA.  
**▲ NA** Procedure NA at night.

MISSED APPROACH: Climbing left turn to 2000 direct VANER WP and hold.

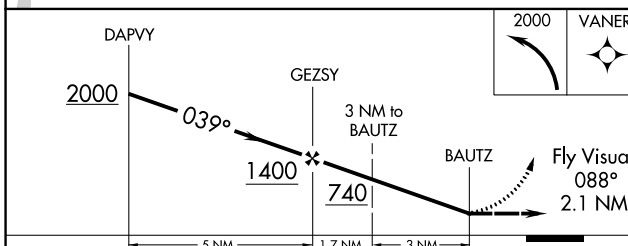
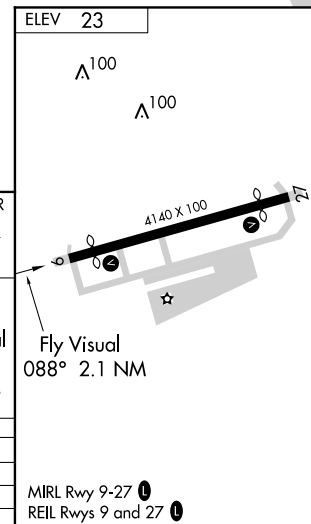
AWOS-3 <b>124.025</b>	NEW YORK APP CON <b>135.35 379.9</b>	CLNC DEL <b>127.25</b>	UNICOM <b>123.0 (CTAF) ①</b>
--------------------------	---	---------------------------	---------------------------------



NE-2, 01 MAR 2018 to 29 MAR 2018

NE-2, 01 MAR 2018 to 29 MAR 2018

Procedure NA for arrivals at WARRD on V213 southbound and on TK502 westbound.



CATEGORY	A	B	C	D
CIRCLING	620-2½	597 (600-2½)		NA
NEWARK ALTIMETER SETTING MINIMUMS				
CIRCLING	640-2½	617 (700-2½)		NA

MIRL Rwy 9-27 ①  
REIL Rwy 9 and 27 ①