

LOC I-LBE <b>110.9</b>	APP CRS <b>236°</b>	Rwy Idg TDZE Apt Elev	<b>7372</b> <b>1145</b> <b>1199</b>
---------------------------	------------------------	-----------------------------	---

# ILS or LOC RWY 24

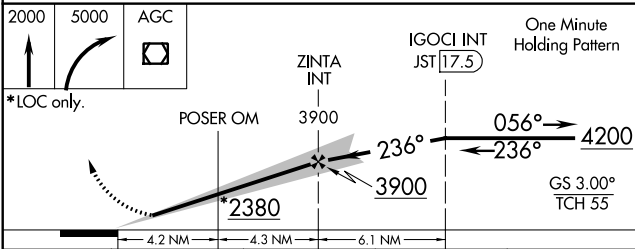
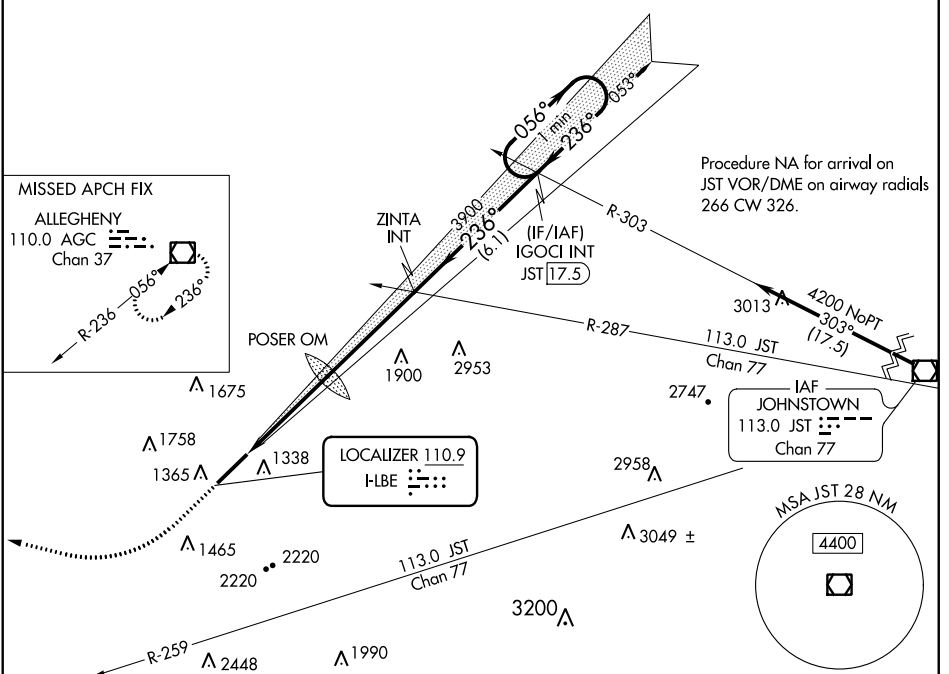
ARNOLD PALMER RGNL (L.B.E)

**⚠** Circling NA SE of Rwy 5-23. Inop table does not apply to S-LOC 23 Cats C/D.  
**⚠** For inop ALS, increase POSER OM minimums S-LOC 23 Cats C/D visibility to 1 1/4 SM.

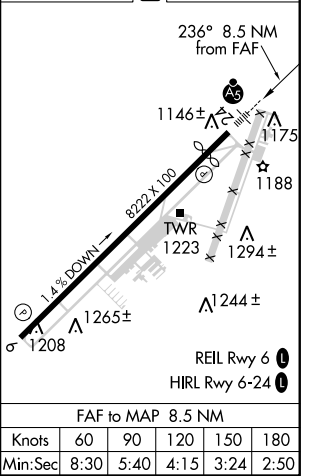


**MISSED APPROACH:** Climb to 2000 then climbing right turn to 5000 direct AGC VOR/DME and hold.

ATIS <b>118.375</b>	JOHNSTOWN APP CON ★ <b>121.2 299.2</b>	PALMER TOWER ★ <b>125.0 (CTAF)</b>	GND CON <b>121.8</b>
------------------------	---	---------------------------------------	-------------------------



ELEV 1199	TDZE 1145
-----------	-----------



CATEGORY	A	B	C	D
S-ILS 24	1345-1/2 200 (200-1/2)			
S-LOC 24	2380-3/4 1235 (1200-3/4)	2380-1 1235 (1200-1)	2380-3	1235 (1200-3)
<b>C</b> CIRCLING	2380-1 1/4 1181 (1200-1 1/4)	2380-1 1/2 1181 (1200-1 1/2)	2380-3	1181 (1200-3)
POSER OM MINIMUMS				
S-LOC 24	1760-1/2	615 (600-1/2)	1760-1 3/8	615 (600-1 3/8)
<b>C</b> CIRCLING	1760-1 561 (600-1)	1780-1 581 (600-1)	2060-2 1/2 861 (900-2 1/2)	2060-2 3/4 861 (900-2 3/4)

NE-4, 07 NOV 2019 to 05 DEC 2019

NE-4, 07 NOV 2019 to 05 DEC 2019

WAAS CH <b>70499</b> <b>W24A</b>	APP CRS <b>236°</b>	Rwy Idg TDZE Apt Elev	<b>7372</b> <b>1145</b> <b>1199</b>
--	------------------------	-----------------------------	---

# RNAV (GPS) RWY 24

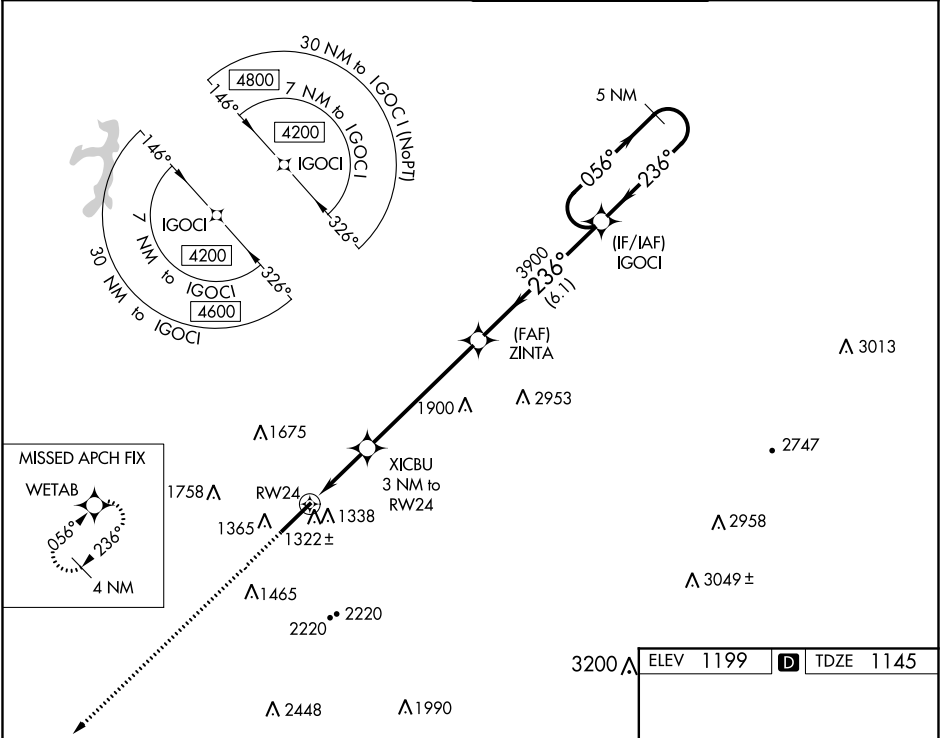
ARNOLD PALMER RGNL (L.B.E)

**⚠** For uncompensated Baro-VNAV systems, LNAV/VNAV NA below -17°C (2°F) or above 54°C (130°F). Circling NA southeast of Rwy 6-24. DME/DME RNP-0.3 NA.

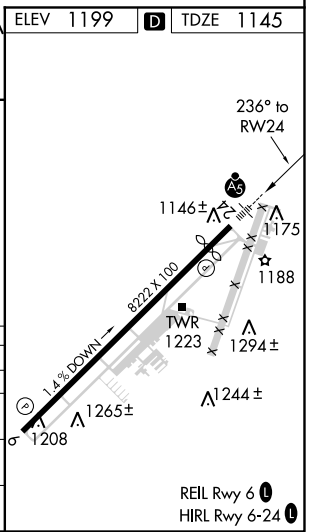
MALSR

**MISSED APPROACH:** Climb to 4200 direct WETAB and hold, continue climb-in-hold to 4200.

ATIS <b>118.375</b>	JOHNSTOWN APP CON* <b>121.2 299.2</b>	PALMER TOWER* <b>125.0 (CTAF) 0</b>	GND CON <b>121.8</b>
------------------------	--	--	-------------------------



4200	WETAB	5 NM Holding Pattern	
*LNAV only.		ZINTA	IGOCI
		XICBU 3 NM to RWY 24	
		RWY 24	
		*2140	3900
		1.2	1.8 NM
		5.5 NM	6.1 NM
CATEGORY	A	B	C
LPV DA		1345 - 1/2	200 (200-1/2)
LNAV/VNAV DA		1498 - 3/4	353 (300-3/4)
LNAV MDA	1580 - 1/2	435 (400-1/2)	1580 - 3/4 435 (400-3/4)
CIRCLING	1740 - 1 541 (600-1)	1780 - 1 581 (600-1)	2060 - 2 1/2 861 (900-2 1/2) 2060 - 2 3/4 861 (900-2 3/4)



NE-4, 07 NOV 2019 to 05 DEC 2019

NE-4, 07 NOV 2019 to 05 DEC 2019

WAAS CH <b>70539</b> <b>W06A</b>	APP CRS <b>056°</b>	Rwy Idg <b>8222</b> TDZE <b>1199</b> Apt Elev <b>1199</b>
--	------------------------	---

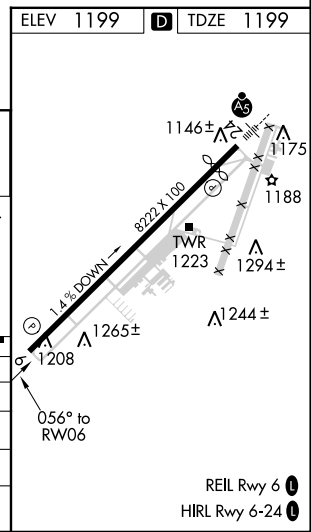
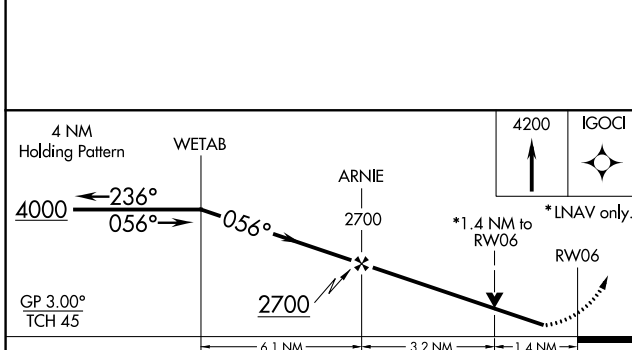
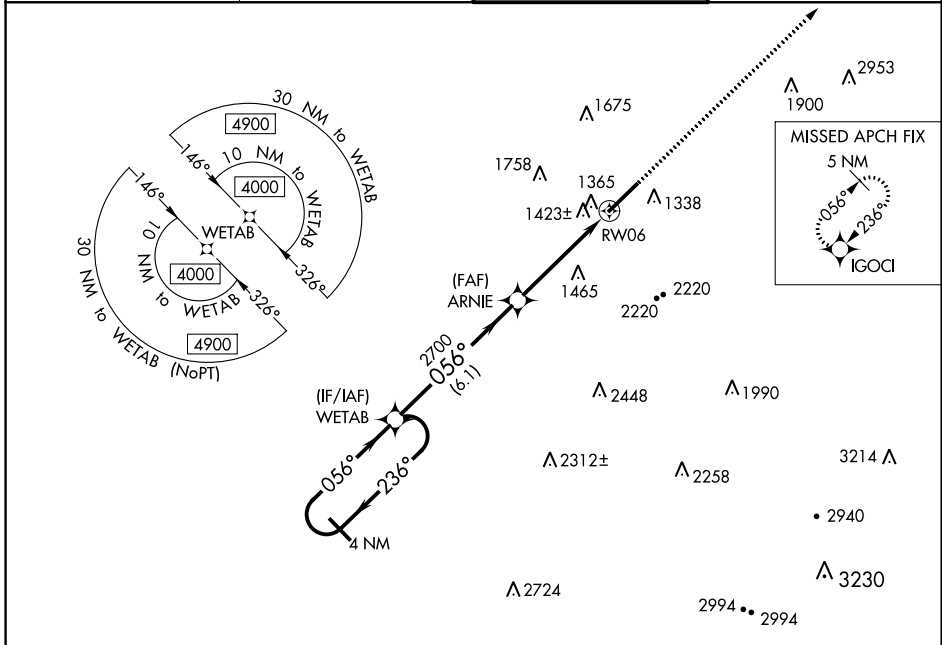
# RNAV (GPS) RWY 6

ARNOLD PALMER RGNL (L.B.E.)

**⚠** For uncompensated Baro-VNAV systems, LNAV/VNAV NA below -17°C (2°F) or above 54°C (130°F). Circling NA southeast of Rwy 6-24.  
Rwy 6 helicopter visibility below ½ SM NA. DME/DME RNP-0.3 NA.

**MISSED APPROACH:**  
Climb to 4200 direct IGOCI and hold.

ATIS <b>118.375</b>	JOHNSTOWN APP CON* <b>121.2 299.2</b>	PALMER TOWER* <b>125.0 (CTAF) 0</b>	GND CON <b>121.8</b>
------------------------	--	--	-------------------------



CATEGORY	A	B	C	D
LPV DA		1449-¾	250 (300-¾)	
LNAV/VNAV DA		1716-1¾	517 (600-1¾)	
LNAV MDA	1680-1	481 (500-1)	1680-1¾	481 (500-1¾)
<b>C</b> CIRCLING	1740-1 541 (600-1)	1780-1 581 (600-1)	2060-2½ 861 (900-2½)	2060-2¾ 861 (900-2¾)

NE-4, 07 NOV 2019 to 05 DEC 2019

NE-4, 07 NOV 2019 to 05 DEC 2019

REIL Rwy 6 **0**  
HIRL Rwy 6-24 **0**