

LOC/DME I-OSS 108.5 Chan 22	APP CRS 251°	Rwy Idg TDZE Apt Elev	24R 8926 122 128	24L 9483 123 128
---	------------------------	-----------------------------	--	--

ILS or LOC RWY 24R

LOS ANGELES INTL (LAX)

From CRJUS, SEAVU: RNAV 1-GPS required. DME or RADAR required.

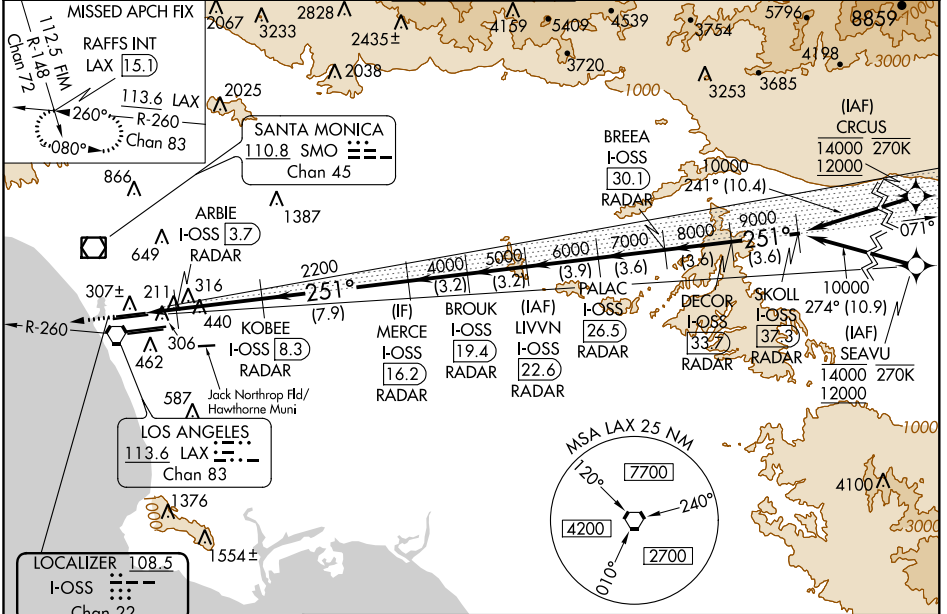
⚠ Simultaneous approach authorized with HHR. LOC procedure NA during simultaneous operations with HHR LOC RWY 25. Simultaneous approach authorized. For inset ALS, increase S-LOC 24R Cat C/D visibility to RVR 5500.

ALS-2 Rwy 24R

MALSR Rwy 24L

MISSED APPROACH: Climb to 2000 on heading 251° and LAX VORTAC R-260 to RAFFS INT/LAX 15.1 DME and hold.

D-ATIS ARR 133.8 DEP 135.65	SOCAL APP CON 124.3 363.2 (APCH FM WEST) 124.5 235.975 (225°-044°)	124.9 269.0 (090°-224°) 128.5 360.7 (045°-089°)	LOS ANGELES TOWER N 133.9 239.3 S 120.95 379.1	GND CON N 121.65 327.0 S 121.75 327.0 W 121.4 327.0	CLNC DEL 120.35 327.0	CPDLC
---	--	--	--	---	---	-------



SW-3, 02 DEC 2021 to 30 DEC 2021

SW-3, 02 DEC 2021 to 30 DEC 2021

