

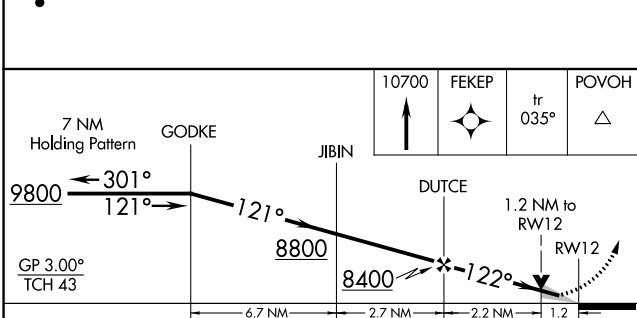
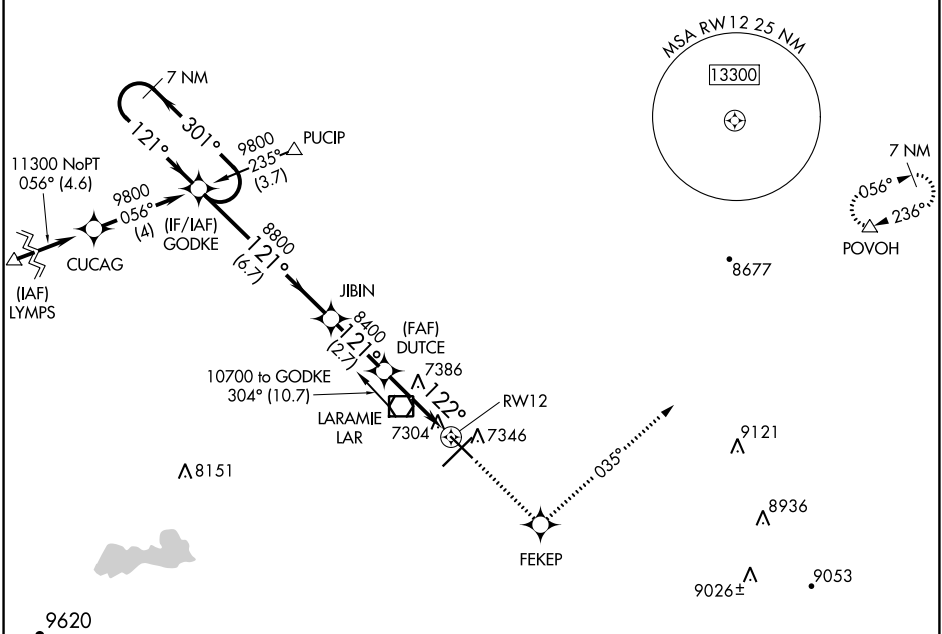
WAAS CH 70600 W12A	APP CRS 122°	Rwy Idg TDZE Apt Elev 6301 7275 7284
--	------------------------	--

RNAV (GPS) RWY 12

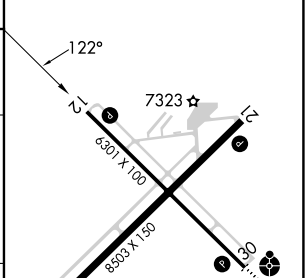
LARAMIE RGNL (L.A.R.)

RNP APCH-GPS.	MISSED APPROACH: Climb to 10700 direct FEKEP and via 035° track to POVOH and hold.
▼ For uncompensated Baro-VNAV systems, LNAV/VNAV NA below -29°C or above 34°C.	

ASOS 135.475	DENVER CENTER 125.9 284.7	UNICOM 123.05 (CTAF) 0
------------------------	-------------------------------------	----------------------------------



ELEV 7284	TDZE 7275
-----------	-----------



CATEGORY	A	B	C	D
LPV DA		7525-3/4	250 (300-3/4)	
LNAV/VNAV DA		7622-1	347 (400-1)	
LNAV MDA	7700-1	425 (500-1)	7700-1 1/4	425 (500-1 1/4)
CIRCLING	7700-1 416 (500-1)	7760-1 476 (500-1)	7880-1 1/2 596 (600-1 1/2)	7920-2 636 (700-2)

REIL Rwy 3, 12 and 21 0
MIRL Rwy 3-21 and 12-30 0

NW-1, 22 FEB 2024 to 21 MAR 2024

NW-1, 22 FEB 2024 to 21 MAR 2024

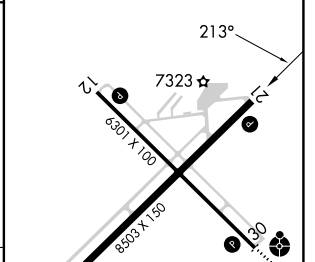
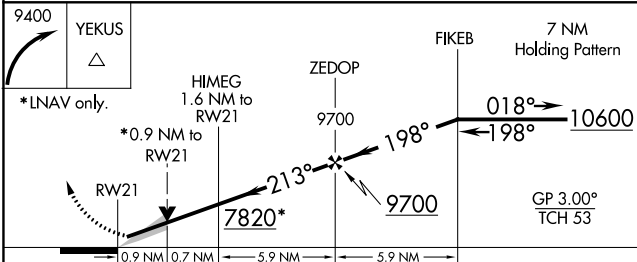
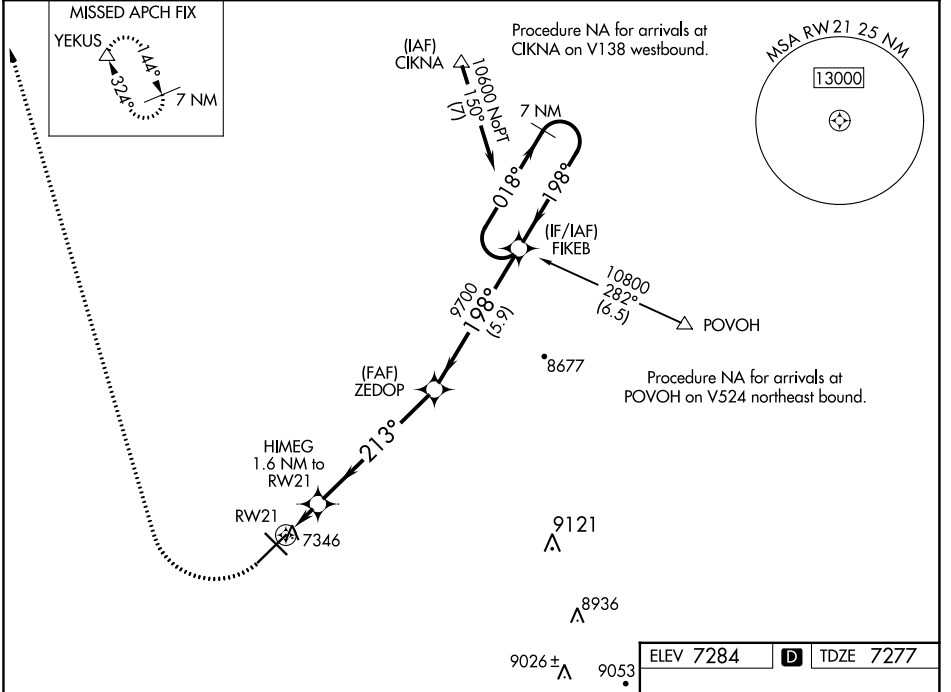
WAAS CH 72825 W21A	APP CRS 213°	Rwy Idg TDZE Apt Elev	8503 7277 7284
--	------------------------	-----------------------------	---

RNAV (GPS) RWY 21

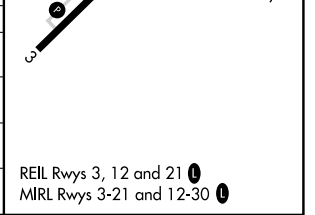
LARAMIE RGNL (L.A.R.)

<p>Circling to Rwy 30 NA at night. Baro-VNAV NA. DME/DME RNP-0.3 NA.</p>	<p>MISSED APPROACH: Climbing right turn to 9400 direct YEKUS and hold.</p>
--	--

ASOS 135.475	DENVER CENTER 125.9 284.7	UNICOM 123.05 (CTAF)
------------------------	-------------------------------------	--------------------------------



CATEGORY	A	B	C	D
LPV DA		7527- ³ / ₄	250 (300- ³ / ₄)	
LNAV/VNAV DA		7527- ³ / ₄	250 (300- ³ / ₄)	
LNAV MDA		7600-1	323 (400-1)	
CIRCLING	7660-1 376 (400-1)	7760-1 476 (500-1)	7880-1½ 596 (600-1½)	7920-2 636 (700-2)



NW-1, 22 FEB 2024 to 21 MAR 2024

NW-1, 22 FEB 2024 to 21 MAR 2024

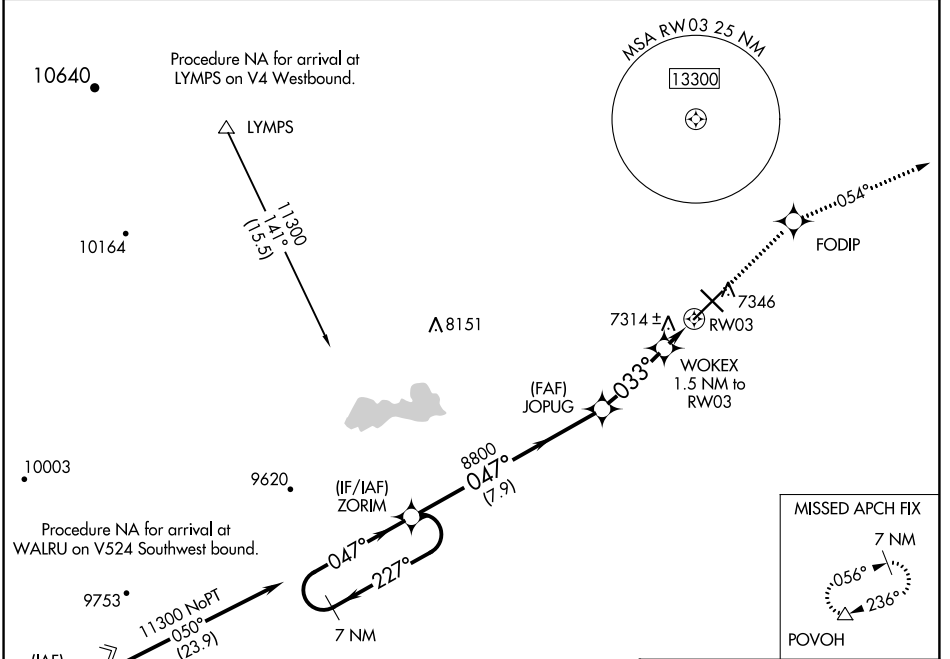
WAAS CH 86325 W03A	APP CRS 033°	Rwy Idg TDZE Apt Elev 8503 7284 7284
--	------------------------	--

RNAV (GPS) RWY 3

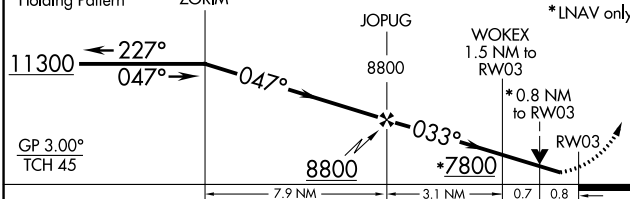
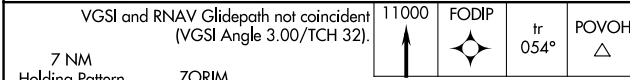
LARAMIE RGNL (L.A.R.)

⚠ DME/DME RNP-0.3 NA. Circling to Rwy 30 NA at night. Baro-VNAV NA. Helicopter visibility reduction below 3/4 SM NA.	MISSED APPROACH: Climb to 11000 direct FODIP and on track 054° to POVOH and hold, continue climb-in-hold to 11000.
---	--

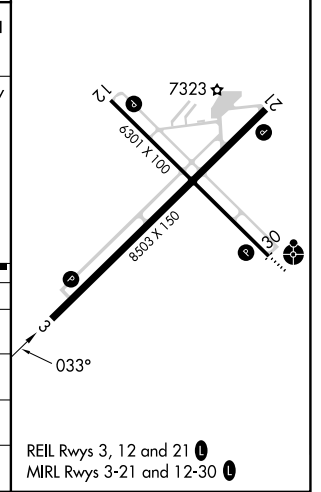
ASOS 135.475	DENVER CENTER 125.9 284.7	UNICOM 123.05 (CTAF) 0
------------------------	-------------------------------------	----------------------------------



ELEV 7284	D TDZE 7284
-----------	--------------------



CATEGORY	A	B	C	D
LPV DA		7534-3/4	250 (300-3/4)	
LNAV/VNAV DA		7534-3/4	250 (300-3/4)	
LNAV MDA	7580-1	296 (300-1)	7580-7/8	296 (300-7/8)
CIRCLING	7660-1 376 (400-1)	7760-1 476 (500-1)	7880-1 1/2 596 (600-1 1/2)	7920-2 636 (700-2)



NW-1, 22 FEB 2024 to 21 MAR 2024

NW-1, 22 FEB 2024 to 21 MAR 2024

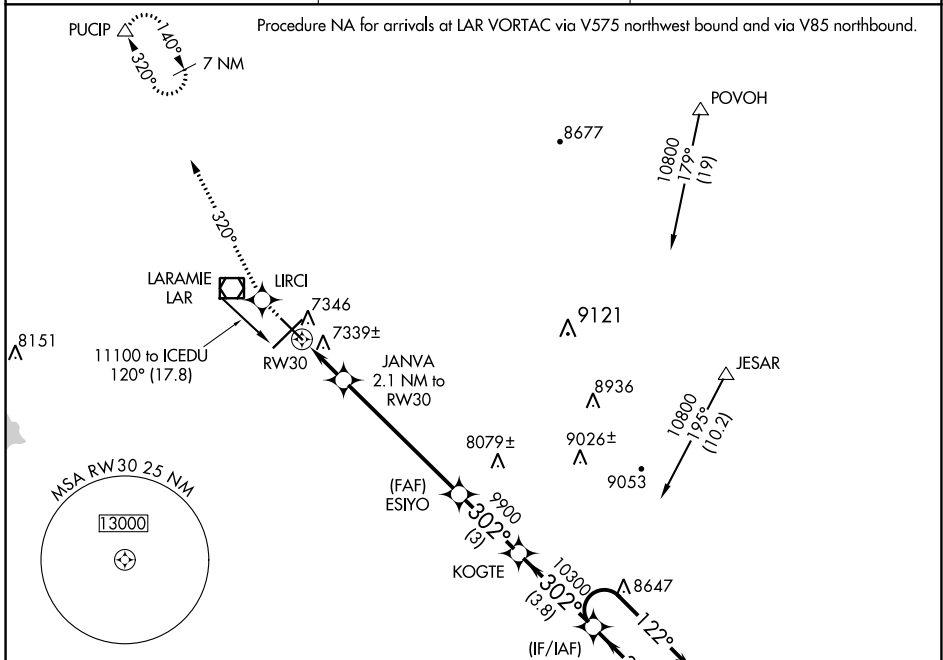
WAAS CH 53600 W30A	APP CRS 302°	Rwy Idg TDZE Apt Elev 6301 7278 7284
---------------------------------	------------------------	--

RNAV (GPS) RWY 30

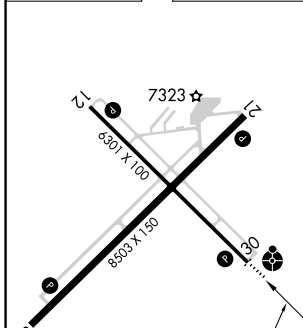
LARAMIE RGNL (L.A.R.)

<p>▽ Inop table does not apply. DME/DME RNP-0.3 NA. For uncompensated Baro-VNAV systems, LNAV/VNAV NA below -29°C (-20°F) or above 35°C (95°F).</p>	<p>ODALS</p>	<p>MISSED APPROACH: Climb to 9400 direct LIRCI and via 320° track to PUCIP and hold.</p>
--	---------------------	--

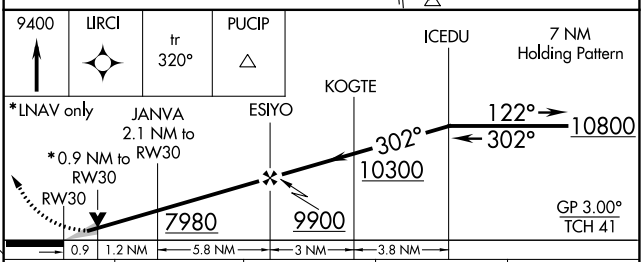
<p>ASOS 135.475</p>	<p>DENVER CENTER 125.9 284.7</p>	<p>UNICOM 123.05 (CTAF) 0</p>
--------------------------------	---	---



ELEV 7284	D	TDZE 7278
-----------	----------	-----------



REIL Rwy 3, 12 and 21 0
MIRL Rwy 3-21 and 12-30 0



CATEGORY	A	B	C	D
LPV DA	7528-1 250 (300-1)			
LNAV/VNAV DA	7629-1¼ 351 (400-1¼)			
LNAV MDA	7600-1 322 (400-1)			
CIRCLING	7660-1¼ 376 (400-1¼)	7760-1¼ 476 (500-1¼)	7880-1½ 596 (600-1½)	7920-2 636 (700-2)

NW-1, 22 FEB 2024 to 21 MAR 2024

NW-1, 22 FEB 2024 to 21 MAR 2024

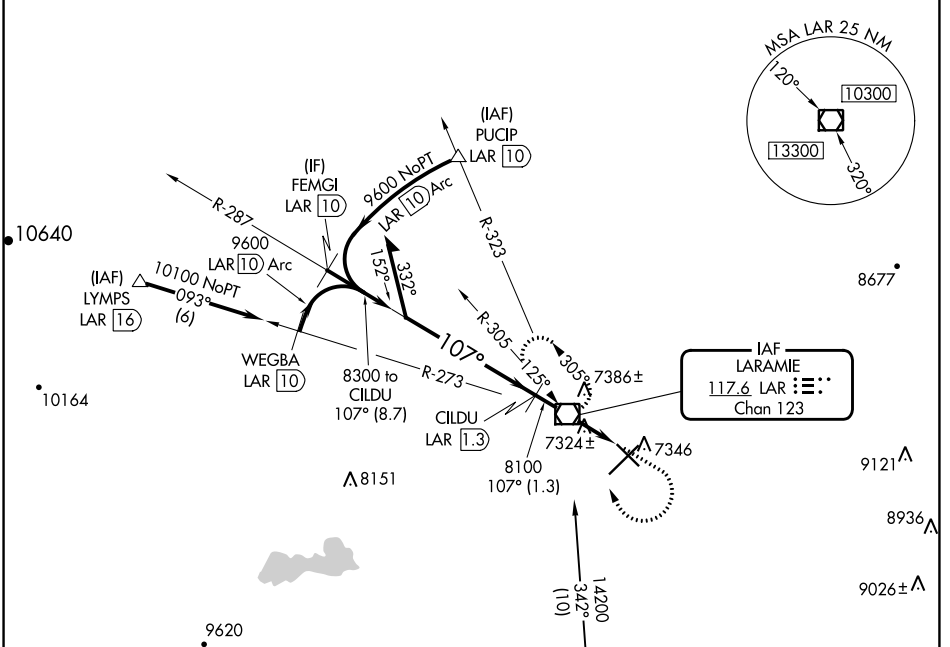
VOR/DME LAR 117.6 Chan 123	APP CRS 107°	Rwy Idg TDZE Apt Elev 6301 7275 7284
---	------------------------	--

VOR/DME RWY 12

LARAMIE RGNL (L.A.R.)

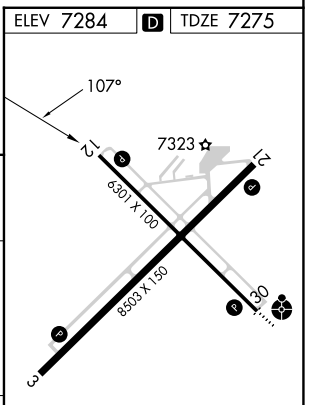
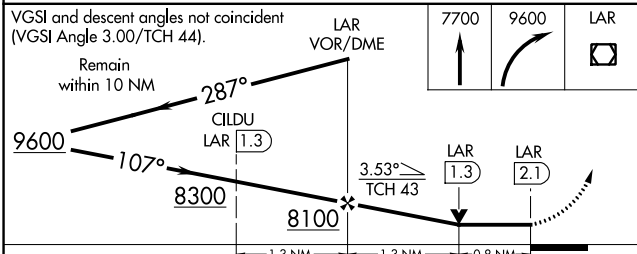
MISSED APPROACH: Climb to 7700 then climbing right turn to 9600 direct LAR VOR/DME and hold, continue climb-in-hold to 9600.

ASOS 135.475	DENVER CENTER 125.9 284.7	UNICOM 123.05 (CTAF)
------------------------	-------------------------------------	--------------------------------



NW-1, 22 FEB 2024 to 21 MAR 2024

NW-1, 22 FEB 2024 to 21 MAR 2024



CATEGORY	A	B	C	D
S-12	7580-1 305 (300-1)			
CIRCLING	7660-1 376 (400-1)	7760-1 476 (500-1)	7880-1½ 596 (600-1½)	7920-2 636 (700-2)

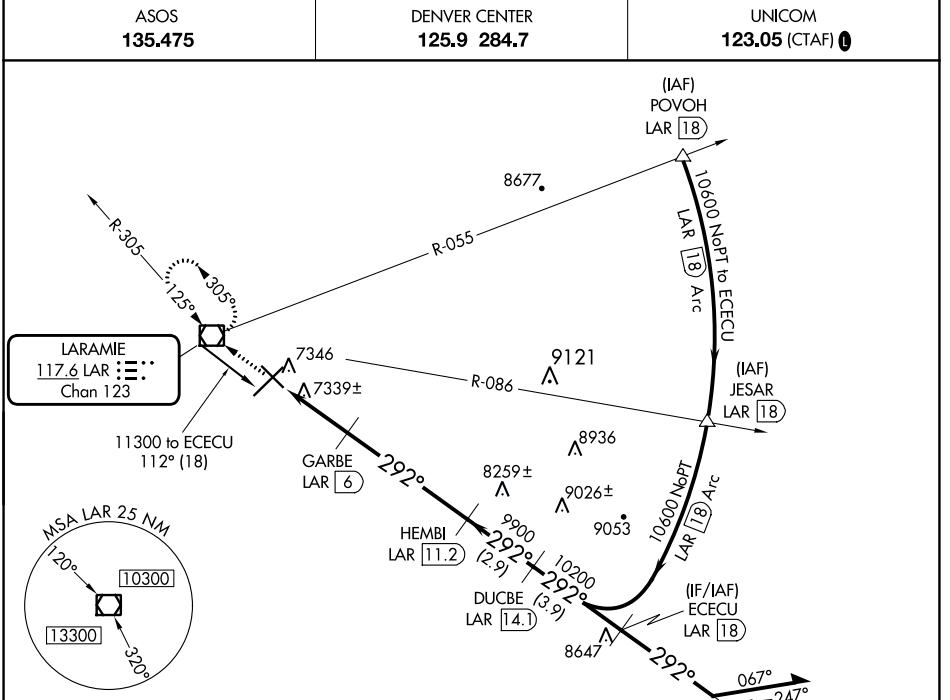
REIL Rwy's 3, 12 and 21
MIRL Rwy's 3-21 and 12-30

VOR/DME LAR 117.6 Chan 123	APP CRS 292°	Rwy Idg TDZE Apt Elev 6301 7278 7284
---	------------------------	--

VOR/DME RWY 30

LARAMIE RGNL (L.A.R.)

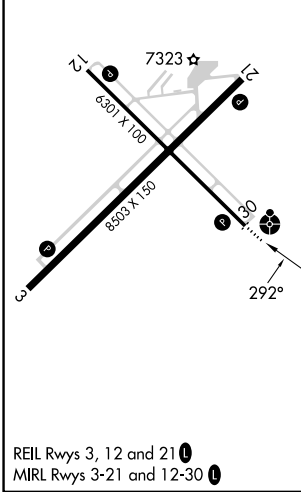
<p>ASOS 135.475</p>	<p>DENVER CENTER 125.9 284.7</p>	<p>UNICOM 123.05 (CTAF)</p>



NW-1, 22 FEB 2024 to 21 MAR 2024

NW-1, 22 FEB 2024 to 21 MAR 2024

ELEV 7284		TDZE 7278
-----------	--	-----------



9600	LAR	ECECU LAR 18	Remain within 10 NM
	GARBE LAR 6	HEMBI LAR 11.2	DUCBE LAR 14.1
LAR 3.1	LAR 4	LAR 6	LAR 11.2
	8220	9900	10200
	0.9	2 NM	5.2 NM
		2.9 NM	3.9 NM
CATEGORY	A	B	C
S-30	7600-¾ 322 (400-¾)		7600-1 322 (400-1)
CIRCLING	7660-1 376 (400-1)	7760-1 476 (500-1)	7880-1½ 596 (600-1½) 7920-2 636 (700-2)