

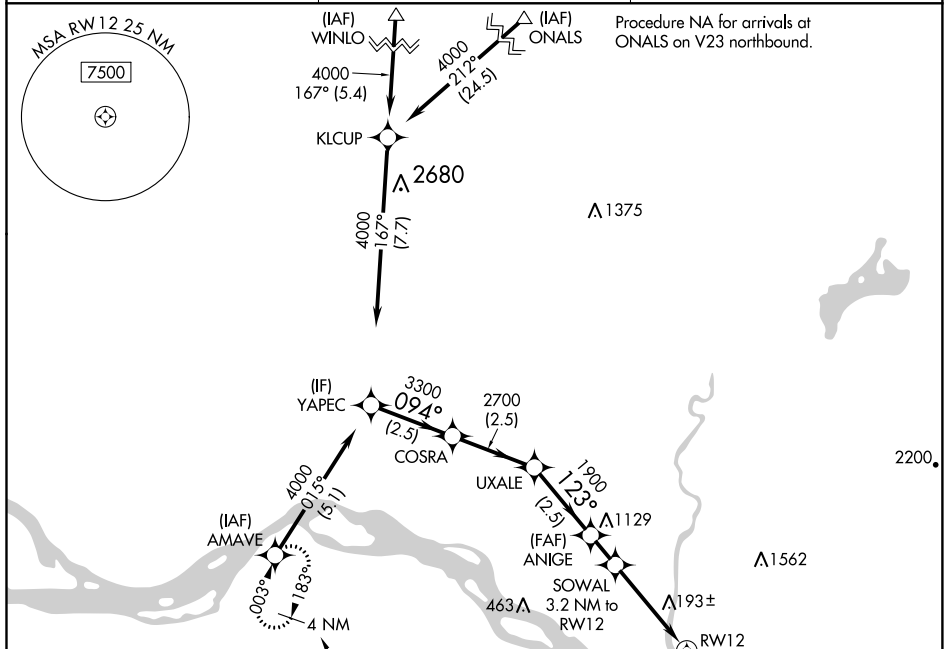
WAAS CH 65743 W12A	APP CRS 123°	Rwy Idg TDZE Apt Elev	4391 20 20
--	------------------------	-----------------------------	---------------------------------------

RNAV (GPS) RWY 12

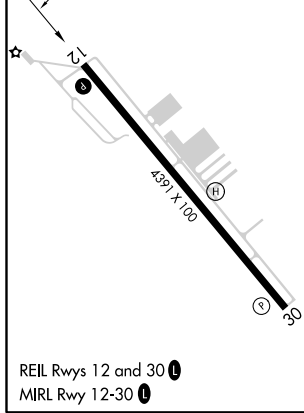
SOUTHWEST WASHINGTON RGNL (KLS)

RNP APCH.	<p>▼ Circling NA northeast of Rwy 12-30. Circling Rwy 30 NA at night. ▲ Rwy 12 helicopter reduction below ¾ SM NA. For uncompensated Baro-VNAV systems, LNAV/VNAV NA below -6°C or above 54°C.</p>	MISSED APPROACH: Climb to 800 then climbing right turn to 4000 direct AMAVE and hold, continue climb-in-hold to 4000.
-----------	---	---

AWOS-3PT 135.075	SEATTLE CENTER 124.2 317.6	UNICOM 122.8 (CTAF) 0
----------------------------	--------------------------------------	---------------------------------



ELEV 20	TDZE 20
---------	---------



YAPEC	VGSi and RNAV glidepath not coincident (VGSi Angle 4.00/TCH 65).				800	4000	AMAVE
4000	COSRA	UXALE	ANIGE	SOWAL	*LNAV only		
094°	3300	2700	1900	3.2 NM to RW12	*2.1 NM to RW12		
GP 4.00°			1420		RW12		
	2.5 NM	2.5 NM	2.5 NM	1 NM	1.1	2.1 NM	

CATEGORY		A	B	C	D
LPV	DA	608-1¾	588 (600-1¾)		NA
LNAV/VNAV	DA	766-2	746 (800-2)		NA
LNAV	MDA	980-1¼ 960 (1000-1¼)	980-1½ 960 (1000-1½)		NA
C	CIRCLING	980-1¼ 960 (1000-1¼)	980-1½ 960 (1000-1½)		NA

NW-1, 22 APR 2021 to 20 MAY 2021

NW-1, 22 APR 2021 to 20 MAY 2021