

EXECUTIVE ONE DEPARTURE (RNAV)  
(EXTVE1.PLFMD) 25AUG11

ATIS  
124.75  
CLNC DEL  
119.85  
GND CON  
121.9 348.6  
CTAF  
122.8  
CHARLESTON DEP CON  
120.7 306.925

**TAKEOFF MINIMUMS:**

Rwy 4: ATC climb of 500' per NM to 900.  
Rwy 9: ATC climb of 500' per NM to 800.  
Rwy 22: Standard with minimum climb of 245' per NM to 520. ATC climb of 500' per NM to 1300.  
Rwy 27: ATC climb of 500' per NM to 1500.

- NOTE: Transponder code will be issued by Charleston clearance delivery.
- NOTE: If unable to accept climb rate, advise ATC on initial contact.
- NOTE: RNAV 1.
- NOTE: GPS required.



**DEPARTURE ROUTE DESCRIPTION**

**TAKEOFF RWY 4:** Climb heading 037° to 520 MSL, then left turn direct RNDAH, cross RNDAH at or above 2000, direct GECHE and then on depicted route to PLFMD, thence. . . .  
**TAKEOFF RWY 9:** Climb heading 094° to 520 MSL, then right turn direct RNDAH, cross RNDAH at or above 2000, direct GECHE and then on depicted route to PLFMD, thence. . . .  
**TAKEOFF RWY 22:** Climb heading 217° to 520 MSL, then right turn direct RNDAH, cross RNDAH at or above 2000, direct GECHE and then on depicted route to PLFMD, thence. . . .  
**TAKEOFF RWY 27:** Climb heading 274° to 520 MSL, then direct RNDAH, cross RNDAH at or above 2000, direct GECHE and then on depicted route to PLFMD, thence. . . .

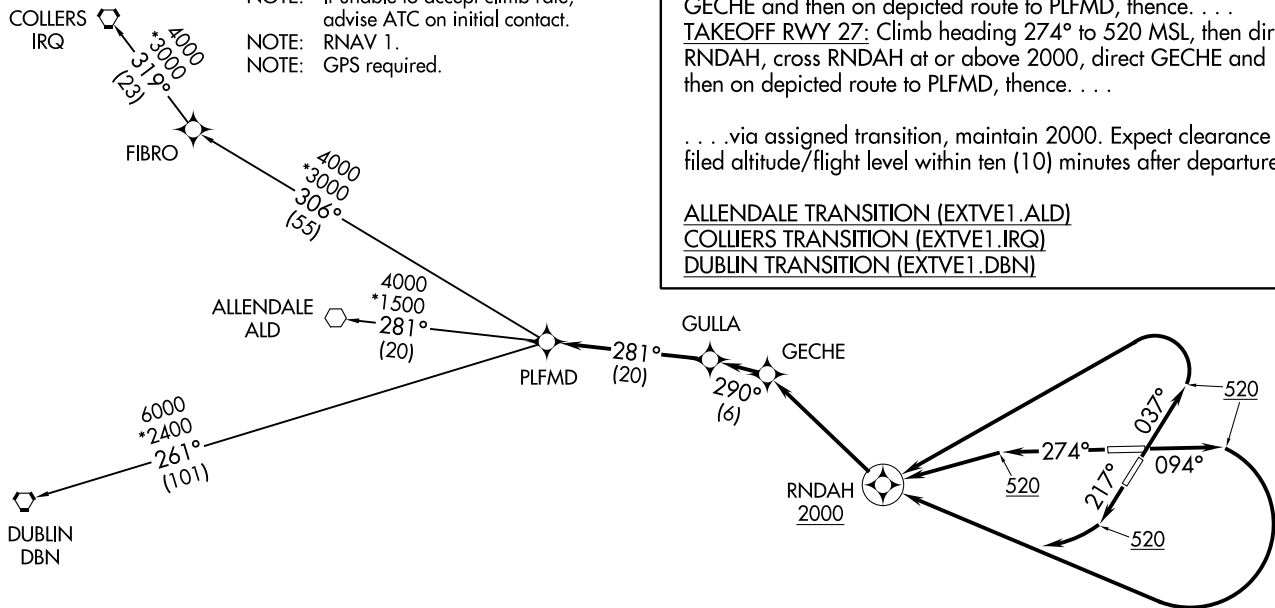
. . . .via assigned transition, maintain 2000. Expect clearance to filed altitude/flight level within ten (10) minutes after departure.

- ALLENDALE TRANSITION (EXTVE1.ALD)
- COLLIERS TRANSITION (EXTVE1.IRQ)
- DUBLIN TRANSITION (EXTVE1.DBN)

EXECUTIVE ONE DEPARTURE (RNAV)  
(EXTVE1.PLFMD) 1728S

AL-5354 (FAA)

CHARLESTON EXECUTIVE (JZI)  
CHARLESTON, SOUTH CAROLINA



NOTE: Chart not to scale.

CHARLESTON, SOUTH CAROLINA  
CHARLESTON EXECUTIVE (JZI)

(KAWA1.LGRHD) 25AUG11

KIAWAH ONE DEPARTURE (RNAV)

ATIS  
124.75  
CLNIC DEL  
119.85  
GND CON  
121.9 348.6  
CTAF  
122.8  
CHARLESTON DEP CON  
120.7 306.925

**TAKEOFF MINIMUMS:**

Rwys 4, 9, 27: ATC climb of 500' per NM to 520.  
Rwy 22: Standard with minimum climb of 245' per NM to 520. ATC climb of 500' per NM to 520.

- NOTE: Transponder code will be issued by Charleston clearance delivery.
- NOTE: If unable to accept climb rate, advise ATC on initial contact.
- NOTE: GPS required.
- NOTE: RNAV 1.



NOTE: Chart not to scale.

MILIE

4000  
\*2400  
216°  
(88)

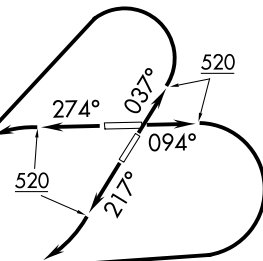
LGRHD

**DEPARTURE ROUTE DESCRIPTION**

- TAKEOFF RWY 4:** Climb heading 037° to 520 MSL, then left turn direct LGRHD, thence. . . .
- TAKEOFF RWY 9:** Climb heading 094° to 520 MSL, then right turn direct LGRHD, thence. . . .
- TAKEOFF RWY 22:** Climb heading 217° to 520 MSL, then right turn direct LGRHD, thence. . . .
- TAKEOFF RWY 27:** Climb heading 274° to 520 MSL, then left turn direct LGRHD, thence. . . .

. . . . via assigned transition/route, maintain 2000. Expect clearance to filed altitude/flight level within ten (10) minutes after departure.

**MILIE TRANSITION (KAWA1.MILIE)**



(KAWA1.LGRHD) 17285  
KIAWAH ONE DEPARTURE (RNAV)

AL-5354 (FAA)

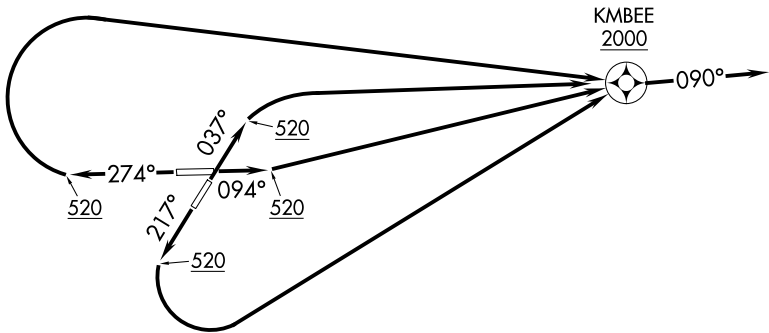
CHARLESTON EXECUTIVE (JZI)  
CHARLESTON, SOUTH CAROLINA

CHARLESTON, SOUTH CAROLINA  
CHARLESTON EXECUTIVE (JZI)

# KMBEE ONE DEPARTURE (RNAV)

ATIS  
124.75  
CLNC DEL  
119.85  
GND CON  
121.9 348.6  
CTAF  
122.8  
CHARLESTON DEP CON  
120.7 306.925

- NOTE: Transponder code will be issued by Charleston clearance delivery.
- NOTE: If unable to accept climb rate or crossing restriction, advise ATC on initial contact.
- NOTE: RNAV 1.
- NOTE: GPS required.
- NOTE: RADAR required.



**TAKEOFF MINIMUMS:**  
 Rwys 4, 22, 27: ATC climb of 500' per NM to 520.  
 Rwy 9: ATC climb of 500' per NM to 620.

NOTE: Chart not to scale.



## DEPARTURE ROUTE DESCRIPTION

**TAKEOFF RWY 4:** Climb heading 037° to 520 MSL, then right turn direct KMBEE, cross KMBEE at or above 2000, thence. . . .

**TAKEOFF RWY 9:** Climb heading 094° to 520 MSL, then direct KMBEE, cross KMBEE at or above 2000, thence. . . .

**TAKEOFF RWY 22:** Climb heading 217° to 520 MSL, then left turn direct KMBEE, cross KMBEE at or above 2000, thence. . . .

**TAKEOFF RWY 27:** Climb heading 274° to 520 MSL, then right turn direct KMBEE, cross KMBEE at or above 2000, thence. . . .

. . . fly heading 090° or as assigned by ATC, expect RADAR vectors on course. Maintain 2000. Expect clearance to filed altitude within ten (10) minutes after departure.