

LOC/DME I-JVW <b>108.55</b> Chan 22(Y)	APP CRS <b>124°</b>	Rwy Idg <b>5499</b> TDZE <b>241</b> Apt Elev <b>247</b>
--	------------------------	---

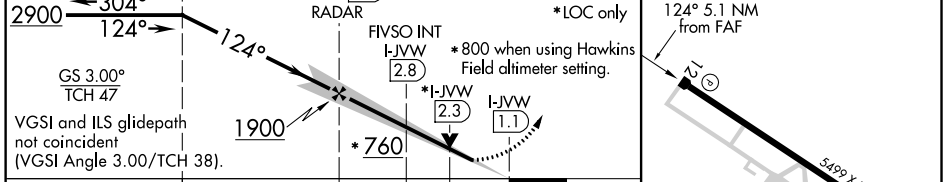
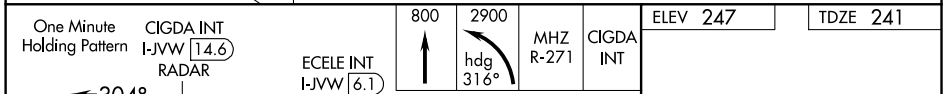
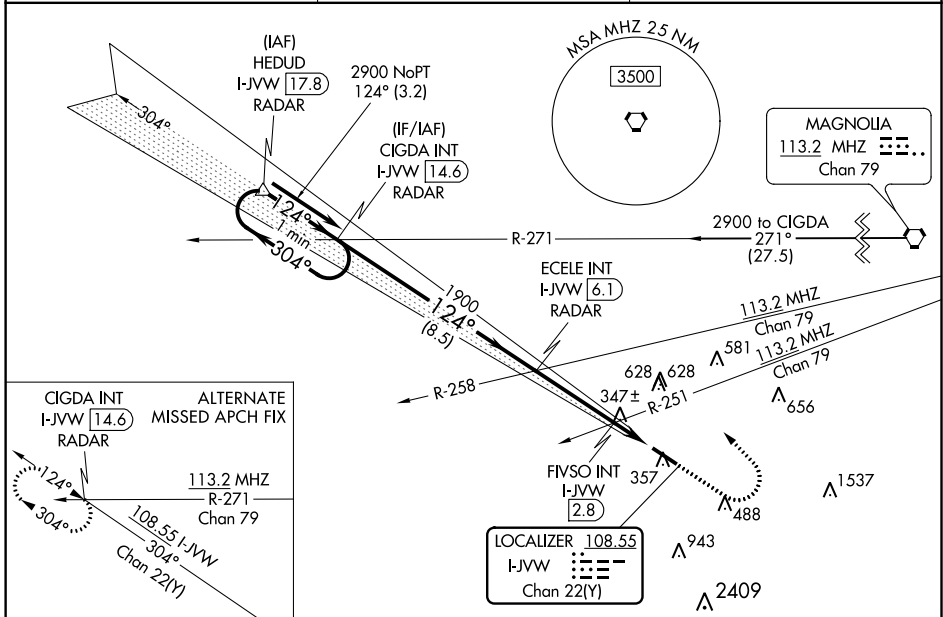
# ILS or LOC RWY 12

JOHN BELL WILLIAMS (JVW)

**⚠** VDP NA with Hawkins Field altimeter setting. Circling NA for Cat D southwest of Rwy 12-30. When local altimeter setting not received, use Hawkins Field altimeter setting: increase all DA 36 feet, all MDA 40 feet, S-LOC 12 Cat C and D visibilities ¼ mile, and Circling Cat C and D visibilities ¼ mile, increase FIVSO fix minimums S-LOC 12 Cat C and D visibilities ¼ mile and Circling Cat C and D visibilities ¼ mile.

**⚠** MISSED APPROACH: Climb to 800 then climbing left turn to 2900 on heading 316° and on MHz VORTAC R-271 to CIGDA INT/I-JVW 14.6 DME and hold.

AWOS-3PT <b>118.675</b>	JACKSON APP CON ★ <b>125.25 319.2</b>	UNICOM <b>123.0 (CTAF)</b>
----------------------------	--	-------------------------------



CATEGORY	A	B	C	D
S-ILS 12	441- <sup>3</sup> / <sub>4</sub> 200 (200- <sup>3</sup> / <sub>4</sub> )			
S-LOC 12	760-1	519 (600-1)	760- <sup>1</sup> / <sub>8</sub>	519 (600- <sup>1</sup> / <sub>8</sub> )
<b>C</b> CIRCLING	800-1	553 (600-1)	733 (800-2)	733 (800-2½)
FIVSO FIX MINIMUMS (DUAL VOR RECEIVERS OR DME REQUIRED)				
S-LOC 12	660-1	419 (500-1)	660- <sup>1</sup> / <sub>8</sub>	419 (500- <sup>1</sup> / <sub>8</sub> )
<b>C</b> CIRCLING	800-1	553 (600-1)	980-2	733 (800-2½)

ELEV 247	TDZE 241
*LOC only	
2900	800
hdg 316°	2900
MHZ R-271	CIGDA INT
113.2 MHz	14.6
108.55 I-JVW	2.8
124° 5.1 NM from FAF	
3499 X 100	
30	
MIRL Rwy 12-30	
REIL Rwy 12 and 30	
FAF to MAP 5.1 NM	
Knots	60 90 120 150 180
Min:Sec	5:06 3:24 2:33 2:02 1:42

SC-4, 25 FEB 2021 to 25 MAR 2021

SC-4, 25 FEB 2021 to 25 MAR 2021

WAAS CH <b>50205</b> <b>W12A</b>	APP CRS <b>123°</b>	Rwy Idg <b>5499</b> TDZE <b>241</b> Apt Elev <b>247</b>
--	------------------------	---

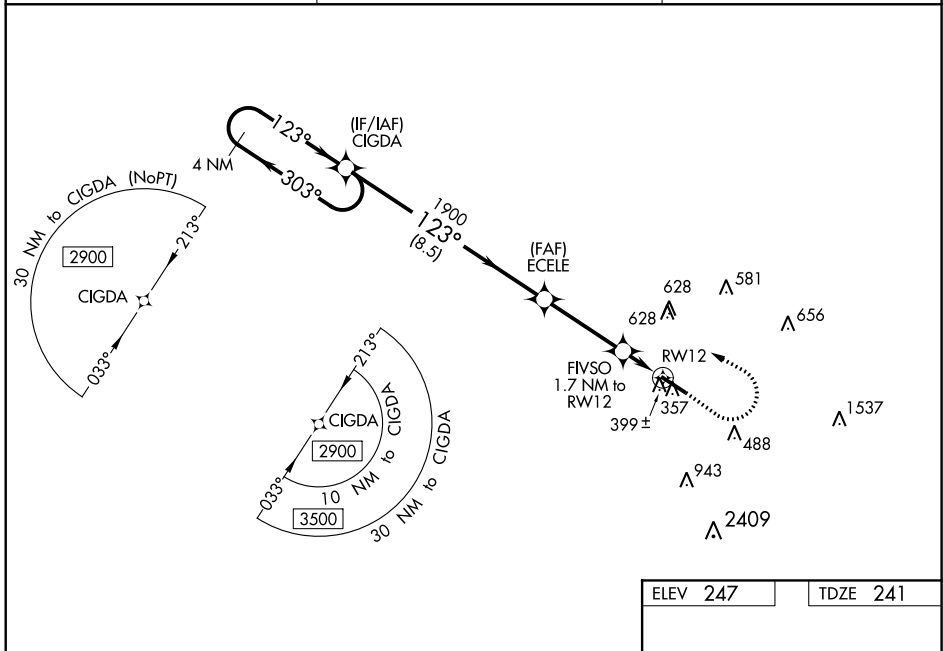
# RNAV (GPS) RWY 12

JOHN BELL WILLIAMS (JWV)

**⚠** For uncompensated Baro-VNAV systems, LNAV/VNAV NA below -15°C (5°F) or above 54°C (130°F). DME/DME RNP-0.3 NA. Circling NA for Cat D southwest of Rwy 12-30. Baro-VNAV and VDP NA when using Hawkins Field altimeter setting. Helicopter visibility reduction below ¼ SM NA. When local altimeter setting not received, use Hawkins Field altimeter setting: increase all DA 36 feet, all MDA 40 feet, all LNAV/VNAV visibilities ½ mile, LNAV Cat C and D visibilities ¼ mile, and Circling Cat C and D visibility ¼ mile.

**MISSED APPROACH:** Climb to 800 then climbing left turn to 2900 direct CIGDA and hold.

AWOS-3PT <b>118.675</b>	JACKSON APP CON* <b>125.25 319.2</b>	UNICOM <b>123.0 (CTAF) 0</b>
----------------------------	---	---------------------------------

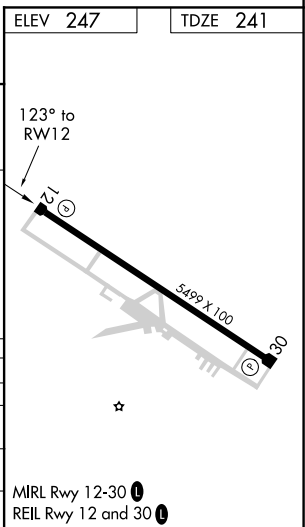


SC-4, 25 FEB 2021 to 25 MAR 2021

SC-4, 25 FEB 2021 to 25 MAR 2021

VGSI and RNAV glidepath not coincident (VGSI Angle 3.00/TCH 38).

4 NM Holding Pattern	CIGDA	ECELE	FIVSO 1.7 NM to RWY 12	RWY 12
2900 ← 303°	123° →	1900	* 1.2 NM to RWY 12	
GP 3.00°		* 820		
TCH 47				
	8.5 NM	3.4 NM	0.5	1.2
CATEGORY	A	B	C	D
LPV DA		441-¾	200 (200-¾)	
LNAV/VNAV DA		662-1⅜	421 (500-1⅜)	
LNAV MDA	660-1	419 (500-1)	660-1⅛	419 (500-1⅛)
<b>C</b> CIRCLING	800-1	553 (600-1)	980-2 733 (800-2)	980-2¼ 733 (800-2¼)



MIRL Rwy 12-30 0  
REIL Rwy 12 and 30 0

WAAS CH <b>78034</b> W30A	APP CRS <b>304°</b>	Rwy Idg <b>5499</b> TDZE <b>247</b> Apt Elev <b>247</b>
---------------------------------	------------------------	--

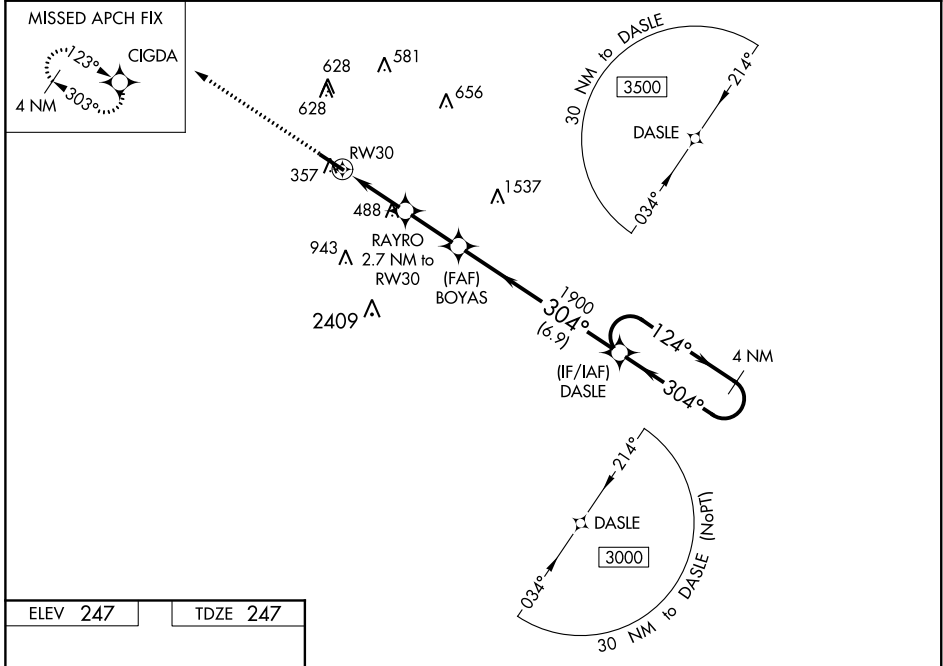
# RNAV (GPS) RWY 30

JOHN BELL WILLIAMS (JWV)

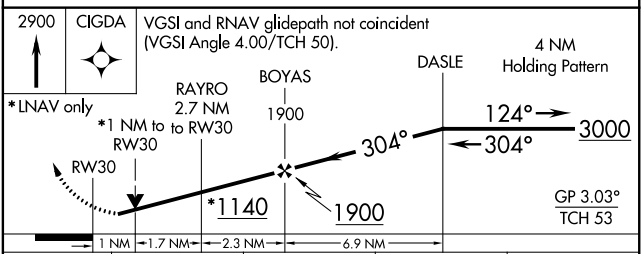
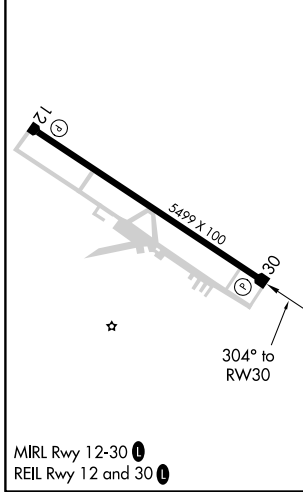
**⚠** For uncompensated Baro-VNAV systems, LNAV/VNAV NA below -15°C (5°F) or above 54°C (130°F). DME/DME RNP-0.3 NA. Circling NA for Cat D southwest of Rwy 12-30. Helicopter visibility reduction below ¾ SM NA. When local altimeter setting not received, use Hawkins Field altimeter setting increase all DA/MDA 40 feet, increase LPV and LNAV/VNAV all Cats visibility and LNAV Cat C/D visibility ½ mile, increase Circling Cat C visibility ¼ mile. Baro-VNAV and VDP NA when using Hawkins Field altimeter setting.

**MISSED APPROACH:**  
Climb to 2900 direct  
CIGDA and hold.

AWOS-3PT <b>118,675</b>	JACKSON APP CON* <b>125,25 319,2</b>	UNICOM <b>123,0 (CTAF) 0</b>
----------------------------	---	---------------------------------



ELEV <b>247</b>	TDZE <b>247</b>
-----------------	-----------------



CATEGORY	A	B	C	D
LPV DA		513-7/8	266 (300-7/8)	
LNAV/VNAV DA		699-1½	452 (500-1½)	
LNAV MDA	740-1	493 (500-1)	740-1¾	493 (500-1¾)
<b>C</b> CIRCLING	740-1 493 (500-1)	760-1 513 (600-1)	980-2 733 (800-2)	980-2¼ 733 (800-2¼)

SC-4, 25 FEB 2021 to 25 MAR 2021

SC-4, 25 FEB 2021 to 25 MAR 2021