

(JENER4.JENER) 20086

AL-898 (FAA)

JOHN MURTHA JOHNSTOWN-CAMBRIA COUNTY (JST)

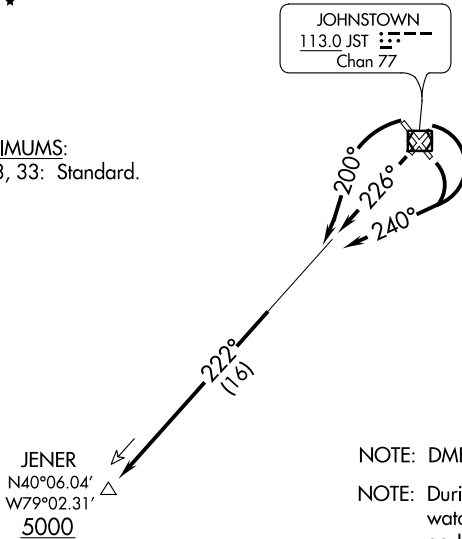
JENER FOUR DEPARTURE

JOHNSTOWN, PENNSYLVANIA

ATIS 118.325
CLNC DEL
126.85 235.775
GND CON
121.6
JOHNSTOWN TOWER ★
125.75 (CTAF)
JOHNSTOWN DEP CON ★
121.2 299.2

**TOP ALTITUDE:
ASSIGNED BY ATC**

TAKEOFF MINIMUMS:
Rwys 5, 15, 23, 33: Standard.



NOTE: DME and radar required.

NOTE: During VFR conditions watch for opposing traffic on JST R-222.

NOTE: Chart not to scale.

DEPARTURE ROUTE DESCRIPTION

TAKEOFF RUNWAYS 5 and 15: Turn right heading 240° to intercept JST R-222, Thence....

TAKEOFF RUNWAY 23: Climb heading 226° to intercept JST R-222, Thence....

TAKEOFF RUNWAY 33: Turn left heading 200° to intercept JST R-222, Thence....

....via JST R-222 to cross JENER/JST 16 DME at or above 5000. Thence via (assigned route).

JENER FOUR DEPARTURE

(JENER4.JENER) 21JUL16

JOHNSTOWN, PENNSYLVANIA

JOHN MURTHA JOHNSTOWN-CAMBRIA COUNTY (JST)

NE-4, 07 OCT 2021 to 04 NOV 2021

NE-4, 07 OCT 2021 to 04 NOV 2021

(LILLI4.LILLI) 20086

LILLI FOUR DEPARTURE

JOHN MURTHA JOHNSTOWN-CAMBRIA COUNTY (JST)
AL-898 (FAA) JOHNSTOWN, PENNSYLVANIA

ATIS 118.325
CLNC DEL
126.85 235.775
GND CON
121.6
JOHNSTOWN TOWER ★
125.75 (CTAF)
JOHNSTOWN DEP CON ★
121.2 299.2

**TOP ALTITUDE:
ASSIGNED BY ATC**

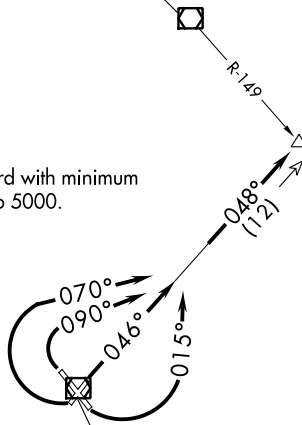
TAKEOFF MINIMUMS:

Rwys 5, 15, 23, 33: Standard with minimum
ATC climb of 235' per NM to 5000.

LILLI
N40°27.87'
W78°39.46'
5000

REVLOC
110.6 REC : - - -
Chan 43

JOHNSTOWN
113.0 JST : - - -
Chan 77



NOTE: During VFR conditions
watch for opposing traffic
on JST R-048.

NOTE: Chart not to scale.



DEPARTURE ROUTE DESCRIPTION

TAKEOFF RUNWAY 5: Climb heading 046° to intercept JST R-048, Thence....

TAKEOFF RUNWAY 15: Turn left heading 015° to intercept JST R-048, Thence....

TAKEOFF RUNWAY 23: Turn right heading 070° to intercept JST R-048, Thence....

TAKEOFF RUNWAY 33: Turn right heading 090° to intercept JST R-048, Thence....

....via JST R-048 to cross LILLI INT at or above 5000 thence via (assigned route).

LILLI FOUR DEPARTURE

(LILLI4.LILLI) 21JUL16

JOHNSTOWN, PENNSYLVANIA
JOHN MURTHA JOHNSTOWN-CAMBRIA COUNTY (JST)

NE-4, 07 OCT 2021 to 04 NOV 2021

NE-4, 07 OCT 2021 to 04 NOV 2021