

| | | |
|------------------------|-----------------------------|---------------------------------------|
| APP CRS 115° | Rwy Idg TDZE Apt Elev | N/A N/A 49 |
|------------------------|-----------------------------|---------------------------------------|

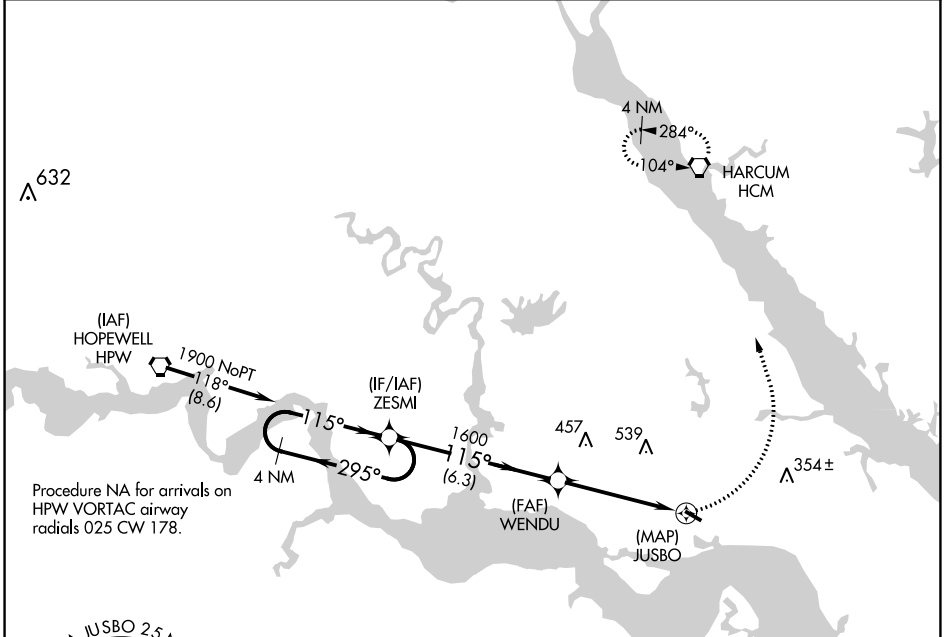
RNAV (GPS)-C

WILLIAMSBURG-JAMESTOWN (JGG)

⚠ DME/DME RNP-0.3 NA. Procedure NA at night. Visibility reduction by helicopters NA. When local altimeter setting not received use Newport News altimeter setting and increase all MDA 40 feet.

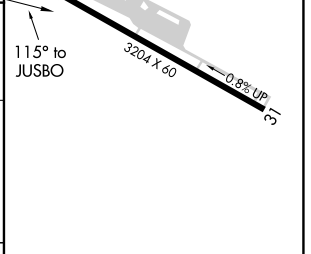
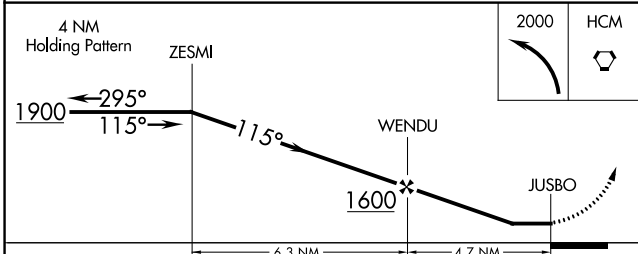
⚠ MISSED APPROACH: Climbing left turn to 2000 direct HCM VORTAC and hold.

| | | | |
|--------------------------|--|-----------------------|---------------------------------|
| AWOS-3 120.625 | NORFOLK APP CON 119.45 360.6 | GCO 135.075 | UNICOM 122.8 (CTAF) 0 |
|--------------------------|--|-----------------------|---------------------------------|



NE-3, 03 DEC 2020 to 31 DEC 2020

NE-3, 03 DEC 2020 to 31 DEC 2020



| | | | | |
|----------|----------------------|---|---|----|
| CATEGORY | A | B | C | D |
| CIRCLING | 1060-3 1011 (1100-3) | | | NA |

REIL Rwy 13 and 31 **0**

MIRL Rwy 13-31 **0**

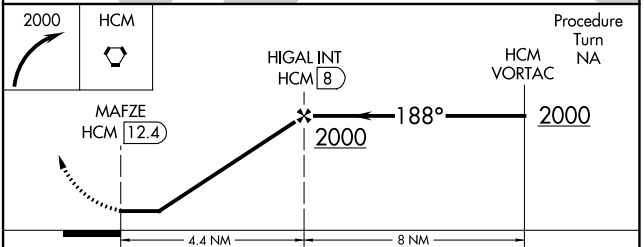
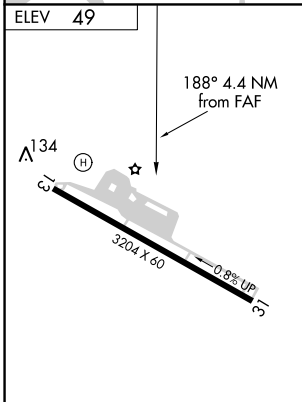
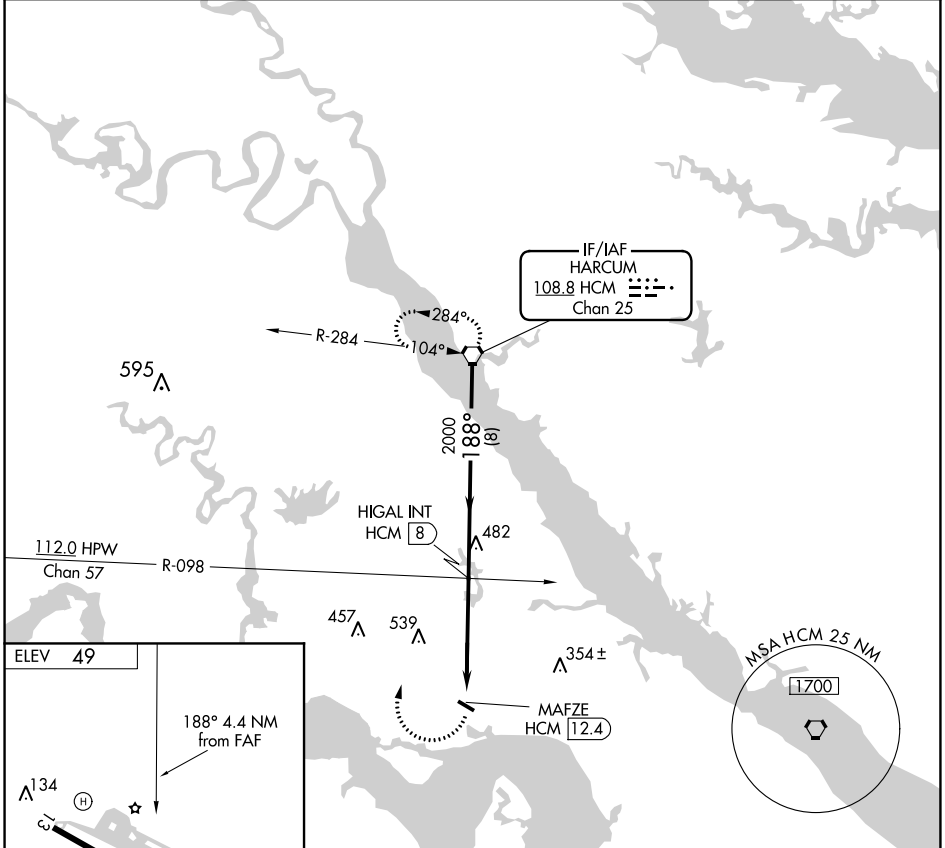
| | | | |
|---------------------------------------|------------------------|-----------------------------|---------------------------------------|
| VORTAC HCM 108.8 Chan 25 | APP CRS 188° | Rwy Idg TDZE Apt Elev | N/A N/A 49 |
|---------------------------------------|------------------------|-----------------------------|---------------------------------------|

VOR-B

WILLIAMSBURG-JAMESTOWN (JGG)

| | |
|--|---|
| <p>▼ Procedure NA at night. Visibility reduction by helicopters NA. ▲ When local altimeter setting not received use Newport News altimeter setting and increase all MDA 40 feet.</p> | <p>MISSED APPROACH: Climbing right turn to 2000 direct HCM VORTAC and hold.</p> |
|--|---|

| | | | |
|--------------------------|--|-----------------------|--|
| AWOS-3 120.625 | NORFOLK APP CON 119.45 360.6 | GCO 135.075 | UNICOM 122.8 (CTAF) 0 |
|--------------------------|--|-----------------------|--|



| | | | | | |
|-------------------|------|------|------|------|------|
| FAF to MAP 4.4 NM | | | | | |
| Knots | 60 | 90 | 120 | 150 | 180 |
| Min:Sec | 4:24 | 2:56 | 2:12 | 1:46 | 1:28 |

| | | | | |
|----------|----------------------|---|---|----|
| CATEGORY | A | B | C | D |
| CIRCLING | 1060-3 1011 (1100-3) | | | NA |

NE-3, 03 DEC 2020 to 31 DEC 2020

NE-3, 03 DEC 2020 to 31 DEC 2020

INSTRUMENT APPROACH PROCEDURE CHARTS

A IFR ALTERNATE AIRPORT MINIMUMS

Standard alternate minimums for non-precision approaches and approaches with vertical guidance [NDB, VOR, LOC, TACAN, LDA, SDF, VOR/DME, ASR, RNAV (GPS) or RNAV (RNP)] are 800-2. Standard alternate minimums for precision approaches (ILS, PAR, or GLS) are 600-2. Airports within this geographical area that require alternate minimums other than standard or alternate minimums with restrictions are listed below. NA - means alternate minimums are not authorized due to unmonitored facility, absence of weather reporting service, or lack of adequate navigation coverage. Civil pilots see FAR 91. IFR Alternate Minimums: Ceiling and Visibility Minimums not applicable to USA/USN/USAF. Pilots must review the IFR Alternate Minimums Notes for alternate airfield suitability.

NAME ALTERNATE MINIMUMS

ABINGDON, VA

VIRGINIA HIGHLANDS (VJI).....**LOC Rwy 24¹²**
RNAV (GPS) Rwy 6¹³
RNAV (GPS) Rwy 24³

- ¹NA when local weather not available.
- ²Categories A, B, 900-2, Category C, 900-2½, Category D, 1000-3.
- ³Category C, 800-2¼, Category D, 1000-3.

ANNAPOLIS, MD

LEE (ANP).....**RNAV (GPS)-A**
NA when local weather not available.

BALTIMORE, MD

BALTIMORE-WASHINGTON INTL THURGOOD
MARSHALL (BWI).....**ILS or LOC Rwy 10¹**
ILS or LOC Rwy 15R²
ILS or LOC Rwy 28²
ILS or LOC Rwy 33L²
RNAV (GPS) Y Rwy 10³
RNAV (GPS) Y Rwy 15R³
RNAV (GPS) Y Rwy 28³
RNAV (GPS) Y Rwy 33L³

- ¹LOC, Category D, 800-2¼.
- ²ILS, LOC, Category D, 800-2¼.
- ³Category D, 800-2¼.

MARTIN STATE (MTN).....**LDA Rwy 33¹**
LOC Rwy 15¹²
RNAV (GPS) Rwy 15
RNAV (GPS) Rwy 33
VOR or TACAN Rwy 15³

- NA when local weather not available.
- ¹NA when control tower closed.
- ²Categories A, B, 900-2; Category C, 900-2½; Category D, 900-2¼.
- ³Categories A, B, 900-2; Category C, 900-2½; Category D, 900-3.

BLACKSBURG, VA

VIRGINIA TECH/MONTGOMERY
EXECUTIVE (BCB).....**RNAV (GPS) Rwy 13**
RNAV (GPS) Rwy 31

- NA when local weather not available.
- Category C, 900-2½.

NAME ALTERNATE MINIMUMS

BROOKNEAL, VA

BROOKNEAL/CAMPBELL
COUNTY (0V4).....**RNAV (GPS) Rwy 6**
RNAV (GPS) Rwy 24

- NA when local weather not available.

BUMPASS, VA

LAKE
ANNA (7W4).....**RNAV (GPS) Rwy 8**
RNAV (GPS) Rwy 26

- NA when local weather not available.

CAMBRIDGE, MD

CAMBRIDGE-DORCHESTER
RGNL (CGE).....**RNAV (GPS) Rwy 34**
RNAV (GPS)-A¹

- Category D, 800-2½.
- ¹NA when local weather not available.

CHARLOTTESVILLE, VA

CHARLOTTESVILLE-
ALBEMARLE (CHO).....**ILS or LOC Rwy 3²**
RNAV (GPS) Rwy 3³
RNAV (GPS) Y Rwy 21³
RNAV (GPS) Z Rwy 21¹

- NA when local weather not available.
- ¹Categories, A, B, C, D, 1000-4.
- ²ILS, Categories A, B, 700-2; Category C, 900-2½; Category D, 900-2¾. LOC, Category C, 900-2½; Category D, 900-2¾.
- ³Category C, 900-2½; Category D, 900-2¾.

CLARKSVILLE, VA

LAKE COUNTRY
REGIONAL (W63).....**RNAV (GPS)-A**
RNAV (GPS)-B

- NA when local weather not available.

CREWE, VA

CREWE
MUNI (W81).....**RNAV (GPS)-A**
Categories A, B, 1000-3.

03 DEC 2020 to 31 DEC 2020

03 DEC 2020 to 31 DEC 2020

NAME ALTERNATE MINIMUMS

CULPEPER, VA

CULPEPER RGNL (CJR).....LOC Rwy 4¹
NDB Rwy 4¹
RNAV (GPS) Rwy 4²
RNAV (GPS) Rwy 22²
VOR-A²

¹NA when FBO closed.

²NA when local weather not available.

CUMBERLAND, MD

GREATER CUMBERLAND
RGNL (CBE).....LOC/DME Rwy 23¹⁴
RNAV (GPS) Rwy 5²
RNAV (GPS) Rwy 23³

NA when local weather not available.

¹Category A, 1000-2; Category B, 1400-2;

Category C 1500-3, Category D 1600-3.

²Category A, 1100-2; Category B, 1400-2;

Category C, 1500-3; Category D, 1600-3.

³Category A, 1100-2; Category B, 1400-2;
Category C, 1500-3.

⁴NA when CBE FBO closed.

DANVILLE, VA

DANVILLE RGNL (DAN).....ILS or LOC Rwy 2
RNAV (GPS) Rwy 2
RNAV (GPS) Rwy 20
RNAV (GPS) Rwy 31

NA when local weather not available.

DOVER/CHESWOLD, DE

DELAWARE
AIRPARK (33N).....RNAV (GPS) Rwy 9
RNAV (GPS) Rwy 27
VOR Rwy 27

NA when local weather not available.

Category C, 800-2¼; Category D, 800-2½.

DUBLIN, VA

NEW RIVER
VALLEY (PSK).....RNAV (GPS) Rwy 6
RNAV (GPS) Rwy 24
VOR/DME Rwy 6

NA when local weather not available.

EASTON, MD

EASTON/NEWNAM
FIELD (ESN).....ILS or LOC Rwy 4¹
RNAV (GPS) Rwy 4²
RNAV (GPS) Rwy 22²

¹ILS, LOC, NA when control tower closed.

²NA when local weather not available.

FARMVILLE, VA

FARMVILLE
RGNL (FVX).....RNAV (GPS) Rwy 3
RNAV (GPS) Rwy 21

NA when local weather not available.

NAME ALTERNATE MINIMUMS

FELKER AAF (KFAF)

FORT EUSTIS, VA.....RNAV (GPS) Rwy 14
COPTER RNAV (GPS) Rwy 14
NA when control tower closed.

FORT MEADE (ODENTON), MD

TIPTON (FME).....RNAV (GPS) Rwy 10
RNAV (GPS) Rwy 28
NA when local weather not available.

FRANKLIN, VA

FRANKLIN
RGNL (FKN).....RNAV (GPS) Rwy 9
RNAV (GPS) Rwy 27
NA when local weather not available.

FREDERICK, MD

FREDERICK
MUNI (FDK).....ILS or LOC Rwy 23¹²³
RNAV (GPS) Rwy 5¹⁴
RNAV (GPS) Y Rwy 23⁴
RNAV (GPS) Z Rwy 23⁵

¹NA when local weather not available.

²NA when tower closed.

³LOC, Category C, 800-2½; Category D, 900-3.

⁴Category D, 800-2½.

⁵Category C, 800-2¼; Category D, 900-2¼.

FREDERICKSBURG, VA

SHANNON (EZF).....RNAV (GPS) Rwy 24
Categories A, B, C, 1100-3
NA when local weather not available.

FRONT ROYAL, VA

FRONT ROYAL-WARREN
COUNTY (FRR).....RNAV (GPS)-A
NA when local weather not available.
Categories A, B, 1200-2.

GAITHERSBURG, MD

MONTGOMERY COUNTY
AIRPARK (GAI).....RNAV (GPS)-A
RNAV (GPS) Rwy 14
NA when local weather not available.

GALAX/HILLSVILLE, VA

TWIN COUNTY (HLX).....RNAV (GPS) Rwy 1
RNAV (GPS) Rwy 19
NA when local weather not available.

GEORGETOWN, DE

DELAWARE
COASTAL (GED).....RNAV (GPS) Rwy 4
RNAV (GPS) Rwy 22
VOR Rwy 22
NA when local weather not available.

03 DEC 2020 to 31 DEC 2020

03 DEC 2020 to 31 DEC 2020

NAME ALTERNATE MINIMUMS

HAGERSTOWN, MD

HAGERSTOWN RGNL-RICHARD A.
HENSON FIELD (HGR).....**ILS or LOC Rwy 9¹²**
ILS or LOC Rwy 27¹³
RNAV (GPS) Rwy 9
RNAV (GPS) Rwy 27
VOR Rwy 9

NA when local weather not available.

¹NA when control tower closed.

²LOC, Category D, 700-2.

³ILS, Categories A, B, C, D, 700-2.

HOT SPRINGS, VA

INGALLS FIELD (HSP).....**RNAV (GPS) Rwy 7¹**
RNAV (GPS) Rwy 25²

NA when local weather not available.

¹Categories A, B, 1000-2; Category C, 1000-2½,
Category D, 1000-3.

²Category C, 800-2¼; Category D, 800-2½.

JONESVILLE, VA

LEE COUNTY (OVG).....**RNAV (GPS) Rwy 7¹**
RNAV (GPS) Rwy 25²

NA when local weather not available.

¹Category C, 1200-3.

²Categories A, B, 900-2; Category C, 1200-3.

KENBRIDGE, VA

LUNENBURG
COUNTY (W31).....**RNAV (GPS)-A**
RNAV (GPS)-B¹

NA when local weather not available.

¹Categories A, B, 1100-3.

LAWRENCEVILLE, VA

BRUNSWICK COUNTY
AIRPORT (LVL).....**RNAV (GPS)-A**
RNAV (GPS)-B

NA when local weather not available.

Categories A, B, 1100-3.

LEESBURG, VA

LEESBURG
EXECUTIVE (JYO).....**RNAV (GPS) Rwy 17**
NA when local weather not available.

LEONARDTOWN, MD

ST MARY'S COUNTY
RGNL (2W6).....**RNAV (GPS) Rwy 11**
RNAV (GPS) Rwy 29¹

Category D, 800-2¼.

¹NA when local weather not available.

LOUISA, VA

LOUISA COUNTY/
FREEMAN FIELD (LKU).....**RNAV (GPS) Rwy 9**
RNAV (GPS) Rwy 27

NA when local weather not available.

NAME ALTERNATE MINIMUMS

LURAY, VA

LURAY CAVERNS (LUA).....**NDB-A¹**
RNAV (GPS) Rwy 4²
RNAV (GPS) Rwy 22³
VOR/DME-B⁴

NA when local weather not available.

¹Categories A, B, 1500-2, Category C, 1500-3.

²Categories A, B, 1400-2, Category C, 1400-3.

³Categories A, B, 1000-2, Category C, 1000-2½.

⁴Categories A, B, 1300-2, Category C, 1300-3.

LYNCHBURG, VA

LYNCHBURG RGNL/PRESTON GLENN
FIELD (LYH).....**ILS or LOC Rwy 4¹**
RNAV (GPS) Rwy 4²
RNAV (GPS) Rwy 17³
RNAV (GPS) Rwy 22⁴
RNAV (GPS) Rwy 35⁵
VOR Rwy 22⁵

¹LOC, Category B, 900-2, Category C, 900-2½,
Category D, 900-2¾.

²Category B, 900-2; Category C, 900-2½;
Category D, 900-2¾.

³Category B, 900-2.

⁴Categories A, B, 1100-2; Categories C, D, 1100-3.

⁵Categories A, B, 900-2; Category C, 900-2½,
Category D, 900-2¾.

MARION/WYTHEVILLE, VA

MOUNTAIN
EMPIRE (MKJ).....**RNAV (GPS) Rwy 26**
Category C, 1900-3.

MARTINSVILLE, VA

BLUE RIDGE (MTV).....**LOC Rwy 31¹**
RNAV (GPS) Rwy 13
RNAV (GPS) Rwy 31

Category D, 900-2¾.

NA when local weather not available.

¹NA when MTV FBO closed.

MELFA, VA

ACCOMACK
COUNTY (MFV).....**LOC Rwy 3**
NA when airport operations closed.

NEW MARKET, VA

NEW MARKET (8W2).....**RNAV (GPS)-A**
RNAV (GPS)-B

Categories A, B, 1100-3.

NA when local weather not available.

03 DEC 2020 to 31 DEC 2020

03 DEC 2020 to 31 DEC 2020

NAME ALTERNATE MINIMUMS

NEWPORT NEWS, VA

NEWPORT NEWS/WILLIAMSBURG
INTL (PHF).....**ILS or LOC Rwy 7**¹²³
ILS or LOC Rwy 25³
LOC Rwy 20¹⁴
RNAV (GPS) Rwy 2⁴
RNAV (GPS) Rwy 7⁴
RNAV (GPS) Rwy 20⁴

¹NA when control tower closed.
²NA when local weather not available.
³LOC, Category D, 800-2¼.
⁴Category D, 800-2¼.

NORFOLK, VA

CHESAPEAKE
RGNL (CPK).....**ILS or LOC Rwy 5**
RNAV (GPS) Rwy 5
RNAV (GPS) Rwy 23

NA when local weather not available.

HAMPTON ROADS

EXECUTIVE (PVG).....**RNAV (GPS) Rwy 10**
Category C, 800-2¼.

NORFOLK

INTL (ORF).....**ILS or LOC Rwy 5**¹
ILS or LOC Rwy 23²
RNAV (GPS) Rwy 14³
RNAV (GPS) Rwy 32³
RNAV (GPS) Z Rwy 5³
RNAV (GPS) Z Rwy 23³
VOR Rwy 14³
VOR/DME Rwy 32³

¹LOC, Category D, 900-2¾.
²ILS, LOC, Category D, 900-2¾.
³Category D, 900-2¼.

OAKLAND, MD

GARRETT
COUNTY (2G4).....**VOR Rwy 9**
NA when local weather not available.

OCEAN CITY, MD

OCEAN CITY
MUNI (OXB).....**RNAV (GPS) Rwy 2**¹
RNAV (GPS) Rwy 32¹²
VOR-A³

¹NA when local weather not available.
²Category D, 800-2¼.
³Categories A, B, 900-2; Category C, 900-2½;
Category D, 900-2¼.

ORANGE, VA

ORANGE
COUNTY (OMH).....**RNAV (GPS) Rwy 8**¹
RNAV (GPS) Rwy 26¹
VOR/DME-A²

NA when local weather not available.
¹Categories A, B, 900-2.
²Categories A, B, 1600-2.

NAME ALTERNATE MINIMUMS

PETERSBURG, VA

DINWIDDIE
COUNTY (PTB).....**LOC Rwy 5**¹
RNAV (GPS) Rwy 5
RNAV (GPS) Rwy 23
VOR Rwy 23

NA when local weather not available.
¹NA when arpt unattended.

PHILLIPS AAF (KAPG)

ABERDEEN PROVING
GROUND, MD.....**RNAV (GPS) Rwy 22**
NA when control tower closed.

RICHLANDS, VA

TAZEWELL
COUNTY (JFZ).....**LOC/DME Rwy 25**
RNAV (GPS) Rwy 7
RNAV (GPS) Rwy 25

NA when local weather not available.

RICHMOND, VA

RICHMOND INTL (RIC).....**ILS or LOC Rwy 16**
LOC, Categories C, D, 800-2½.

RICHMOND/ASHLAND, VA

HANOVER COUNTY
MUNI (OPF).....**LOC Rwy 16**¹
RNAV (GPS) Rwy 16
RNAV (GPS) Rwy 34¹
VOR Rwy 16

Category D, 900-2¾.
¹NA when local weather not available.

ROANOKE, VA

ROANOKE-BLACKSBURG RGNL/WOODRUM
FIELD (ROA).....**ILS or LOC Rwy 34**¹
LDA Y Rwy 6²
RNAV (GPS) Y Rwy 6³
RNAV (GPS) Y Rwy 24⁴
RNAV (GPS) Y Rwy 34⁵
RNAV (RNP) Z Rwy 34⁶
VOR/DME-A⁷

¹ILS, LOC, Categories A, B, 900-2;
Category C, 1300-3; Category D, 1700-3.
²Categories A, B, 1600-2; Category C, 1600-3;
Category D, 1700-3.
³Categories A, B, 900-2; Category C, 1300-3;
Category D, 1700-3.
⁴Categories A, B, 1900-2;
Categories C, D, 1900-3.
⁵Categories A, B, C 1500-5; Category D, 1700-5.
⁶Categories A, B, C, D 1000-4.
⁷Category C, 1300-3; Category D, 1700-3.

NAME ALTERNATE MINIMUMS

SALISBURY, MD

SALISBURY-OCEAN CITY
WICOMICO RGNL (SBY).....**ILS or LOC Rwy 32**
RNAV (GPS) Rwy 5
RNAV (GPS) Rwy 14
RNAV (GPS) Rwy 23
RNAV (GPS) Rwy 32
VOR Rwy 5

NA when local weather not available.

SOUTH BOSTON, VA

WILLIAM M TUCK (W78).....**RNAV (GPS) Rwy 1**
VOR-A¹

NA when local weather not available.

¹Category C 800-2¼.

SOUTH HILL, VA

MECKLENBURG-
BRUNSWICK RGNL (AVC).....**LOC Rwy 1**
NA when AVC FBO closed.

STAUNTON-WAYNESBORO-

HARRISONBURG, VA

SHENANDOAH VALLEY
RGNL (SHD).....**ILS or LOC Rwy 5¹**
NDB Rwy 5
RNAV (GPS) Rwy 5
RNAV (GPS) Rwy 23

NA when local weather not available.

¹ILS, Category D, 700-2.

STEVENSVILLE, MD

BAY BRIDGE (W29).....**RNAV (GPS) Rwy 29**
NA when local weather not available.

SUFFOLK, VA

SUFFOLK
EXECUTIVE (SFQ).....**RNAV (GPS) Rwy 7**
RNAV (GPS) Rwy 22
RNAV (GPS) Rwy 25

NA when local weather not available.

WAKEFIELD, VA

WAKEFIELD
MUNI (AKQ).....**RNAV (GPS) Rwy 20**
Categories A, B, C, D, 1100-3.

NAME ALTERNATE MINIMUMS

WALLOPS ISLAND, VA

WALLOPS FLIGHT
FACILITY (WAL).....**RNAV (GPS) Rwy 4²**
RNAV (GPS) Rwy 10²
RNAV (GPS) Rwy 17²
RNAV (GPS) Rwy 22²
RNAV (GPS) Rwy 28²
RNAV (GPS) Rwy 35²
VOR/DME or TACAN Rwy 10¹
VOR or TACAN Rwy 17²

NA when local weather not available.

¹Categories A, B, 900-2; Category C, 900-2½;

Category D, 900-2¾.

²Category D, 900-2¾.

WARRENTON, VA

WARRENTON-
FAQUIER (HWY).....**RNAV (GPS) Rwy 15**
RNAV (GPS) Rwy 33
VOR Rwy 15¹

NA when local weather not available.

¹Category D 800-2¼.

WASHINGTON, DC

MANASSAS RGNL/HARRY P DAVIS
FIELD (HEF).....**ILS or LOC Rwy 16L¹**
RNAV (GPS) Rwy 16L²
RNAV (GPS) Rwy 16R²
RNAV (GPS) Rwy 34L²
RNAV (GPS) Rwy 34R²

NA when local weather not available.

¹ILS, Category C, 700-2; Category D, 700-2¼.

¹LOC, Category D, 800-2¼.

²Category D, 800-2¼.

RONALD REAGAN WASHINGTON

NATIONAL (DCA).....**ILS or LOC Rwy 1¹**
LDA Y Rwy 19²
LDA Z Rwy 19³
RNAV (GPS) Rwy 15⁴
RNAV (GPS) RWY 33⁴

¹ILS, Categories A, B, 800-2; Category C, 900-2½;

Category D, 900-3; LOC, Category C, 900-2½;

Category D, 900-3.

²LDA, Categories A, B, C, D, 1100-3.

³Category C, 900-2; Category D, 900-3.

⁴Category C, 900-2½; Category D, 900-3.

03 DEC 2020 to 31 DEC 2020

03 DEC 2020 to 31 DEC 2020

20338

NAME ALTERNATE MINIMUMS

NAME ALTERNATE MINIMUMS

WASHINGTON, DC (CON'T)

WASHINGTON

- DULLES INTL (IAD).....**ILS or LOC/DME Rwy 1C¹**
- ILS or LOC/DME Rwy 1L¹**
- ILS or LOC/DME Rwy 12¹**
- ILS or LOC/DME Rwy 19C¹**
- ILS or LOC/DME Rwy 19R¹**
- ILS or LOC Rwy 1R¹**
- ILS or LOC Rwy 19L¹**
- RNAV (GPS) Y Rwy 19R²**

¹ILS, Categories A, B, C, D, 700-2.

²Category D, 800-2¼.

WEST POINT, VA

MIDDLE PENINSULA

- RGNL (FYJ).....**RNAV (GPS)-B**
- RNAV (GPS) Rwy 10**
- VOR-A**

NA when local weather not available.

WESTMINSTER, MD

CARROLL COUNTY RGNL/JACK B POAGE

- FIELD (DMW).....**RNAV (GPS) Rwy 34**

NA when local weather not available.

WILLIAMSBURG, VA

WILLIAMSBURG-

- JAMESTOWN (JGG).....**RNAV (GPS)-C**
- VOR-B**

NA when local weather not available.

Categories A, B, C, 1100-3.

WILMINGTON, DE

NEW CASTLE (ILG).....

- ILS or LOC Rwy 1¹³**
- RNAV (GPS) Rwy 1**
- RNAV (GPS) Rwy 9**
- RNAV (GPS) Rwy 19**
- RNAV (GPS) Rwy 27**
- VOR Rwy 9¹**
- VOR Rwy 27¹²**

NA when local weather not available.

¹NA when control tower closed.

²Category D, 800-2¼.

³LOC, Category D, 800-2¼.

WINCHESTER, VA

WINCHESTER

- RGNL (OKV).....**RNAV (GPS) Rwy 14¹**
- RNAV (GPS) Rwy 32**
- VOR/DME-A**

NA when local weather not available.

¹Category D, 800-2½.

WISE, VA

LONESOME

- PINE (LNP).....**LOC/DME Rwy 24¹²**
- RNAV (GPS) Rwy 6¹²**
- RNAV (GPS) Rwy 24³**

¹NA when local weather not available.

²Category D, 800-2¼.

³Category C, 800-2¼; Category D, 900-2¾.

03 DEC 2020 to 31 DEC 2020

03 DEC 2020 to 31 DEC 2020

20338

M6