

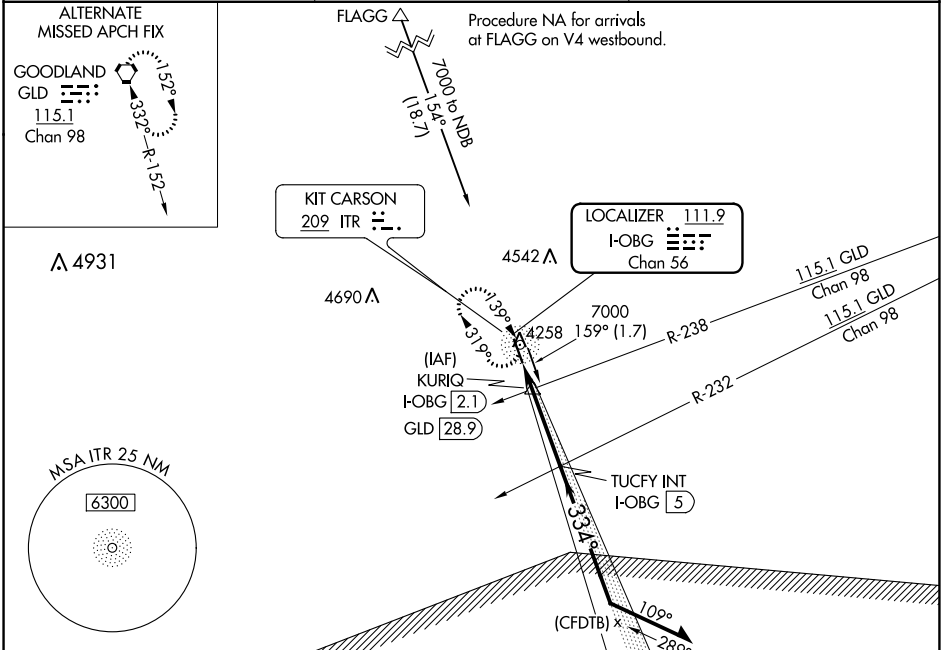
LOC/DME I-OBG 111.9 Chan 56	APP CRS 334°	Rwy Idg TDZE Apt Elev	5199 4205 4218
--	------------------------	-----------------------------	---

LOC RWY 33

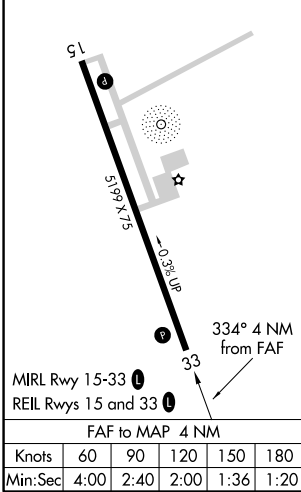
KIT CARSON COUNTY (ITR)

NA ADF required.	MISSED APPROACH: Climb to 7000 direct ITR NDB and hold, continue climb-in-hold to 7000.
-------------------------	---

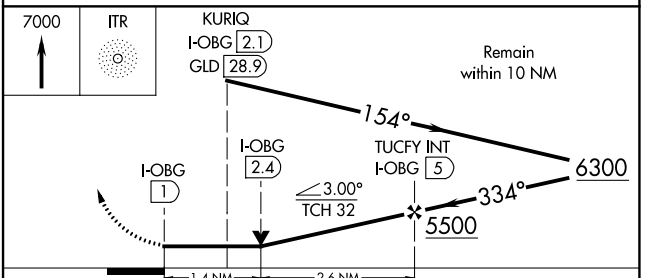
ASOS 135.225	DENVER CENTER 132.7 226.675	UNICOM 122.8 (CTAF) 0
------------------------	---------------------------------------	---------------------------------



ELEV 4218	TDZE 4205
-----------	-----------



ADF or DME REQUIRED



CATEGORY	A	B	C	D
S-33	4680-1 475 (500-1)		4680-1 ³ / ₈ 475 (500-1 ³ / ₈)	
<input checked="" type="checkbox"/> CIRCLING	4680-1 462 (500-1)		4860-1 ³ / ₄ 642 (700-1 ³ / ₄)	4860-2 642 (700-2)

SW-1, 04 NOV 2021 to 02 DEC 2021

SW-1, 04 NOV 2021 to 02 DEC 2021

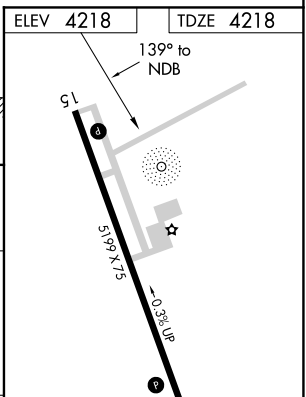
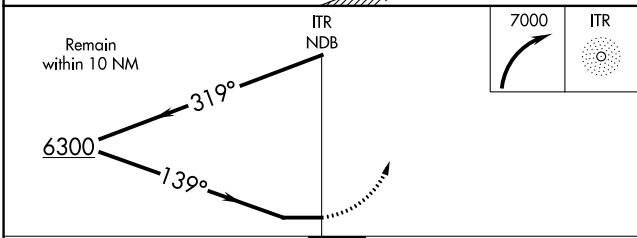
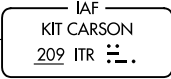
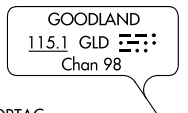
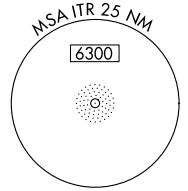
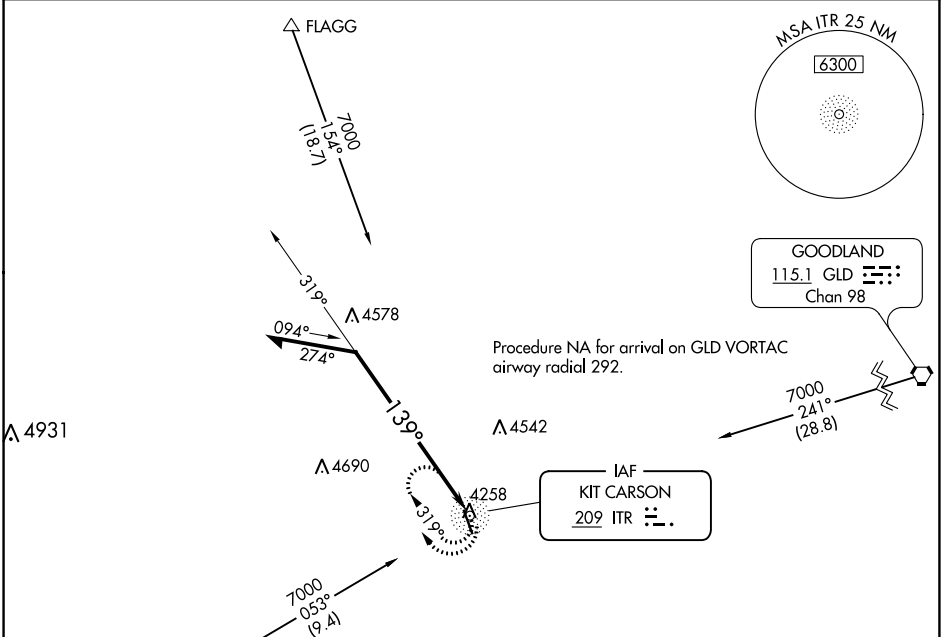
NDB ITR 209	APP CRS 139°	Rwy Idg TDZE Apt Elev	5199 4218 4218
-----------------------	------------------------	-----------------------------	---

NDB RWY 15

KIT CARSON COUNTY (ITR)

MISSED APPROACH: Climbing right turn to 7000 in ITR NDB holding pattern, continue climb-in-hold to 7000.

ASOS 135.225	DENVER CENTER 132.7 226.675	UNICOM 122.8 (CTAF) 1
------------------------	---------------------------------------	---------------------------------



CATEGORY	A	B	C	D
S-15	4940-1	722 (800-1)	4940-2	722 (800-2)
C CIRCLING	4940-1	722 (800-1)	4940-2	4940-2 1/4 722 (800-2 1/4)

MIRL Rwy 15-33 1
REIL Rwy 15 and 33 1

SW-1, 04 NOV 2021 to 02 DEC 2021

SW-1, 04 NOV 2021 to 02 DEC 2021

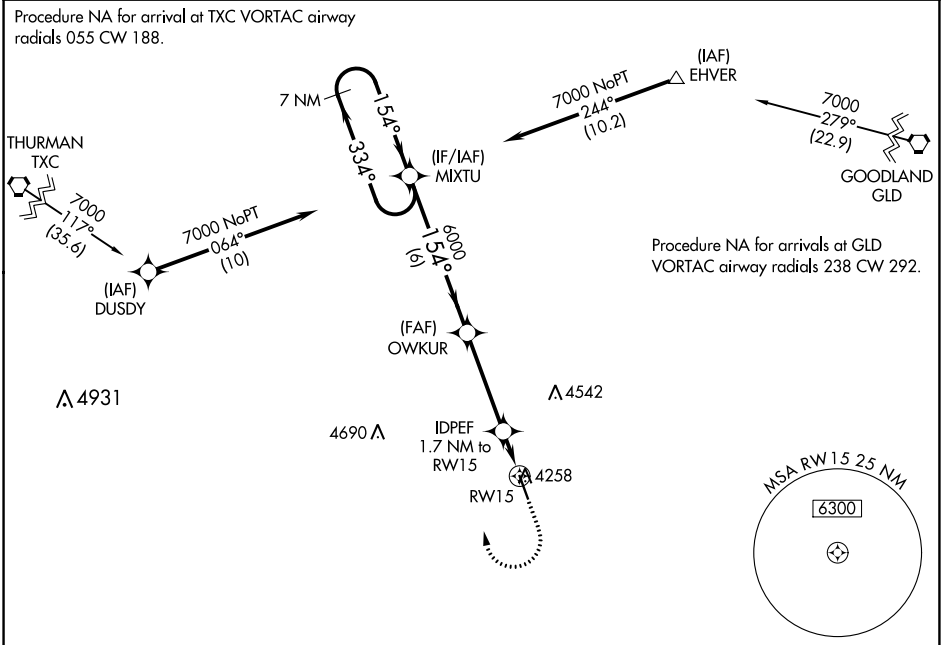
WAAS CH 72999 W15A	APP CRS 154°	Rwy Idg 5199 TDZE 4218 Apt Elev 4218
--	------------------------	---

RNAV (GPS) RWY 15

KIT CARSON COUNTY (ITR)

▽ For uncompensated Baro-VNAV systems, LNAV/VNAV NA below -22°C (-7°F) or above 53°C (127°F). DME/DME RNP- 0.3 NA. **MISSED APPROACH:** Climb to 4700 then climbing right turn to 7000 direct MIXTU and hold.

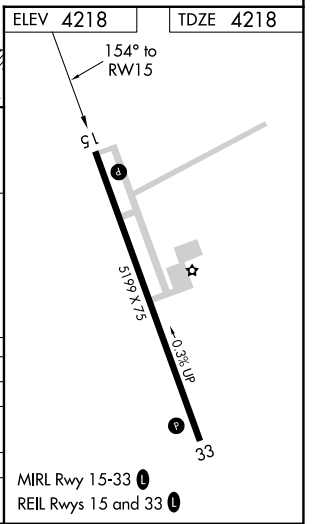
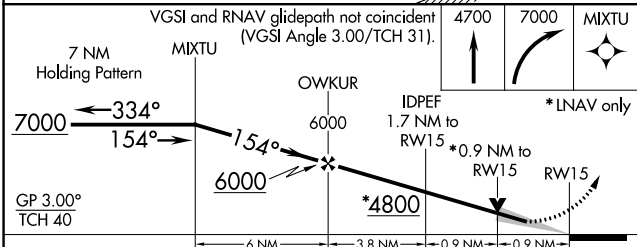
ASOS 135.225	DENVER CENTER 132.7 226.675	UNICOM 122.8 (CTAF) 0
------------------------	---------------------------------------	---------------------------------



SW-1, 04 NOV 2021 to 02 DEC 2021

SW-1, 04 NOV 2021 to 02 DEC 2021

ELEV 4218	TDZE 4218
-----------	-----------



CATEGORY	A	B	C	D
LPV DA		4468-1	250 (300-1)	
LNAV/VNAV DA		4468-1	250 (300-1)	
LNAV MDA		4520-1	302 (400-1)	
C CIRCLING	4580-1 362 (400-1)	4680-1 462 (500-1)	4860-1¾ 642 (700-1¾)	4860-2 642 (700-2)