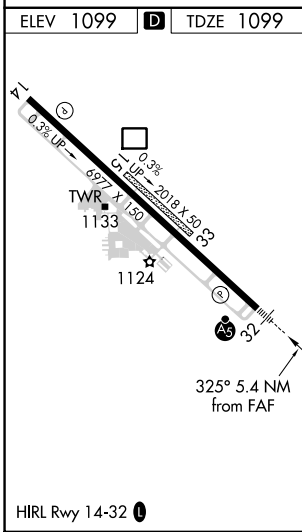
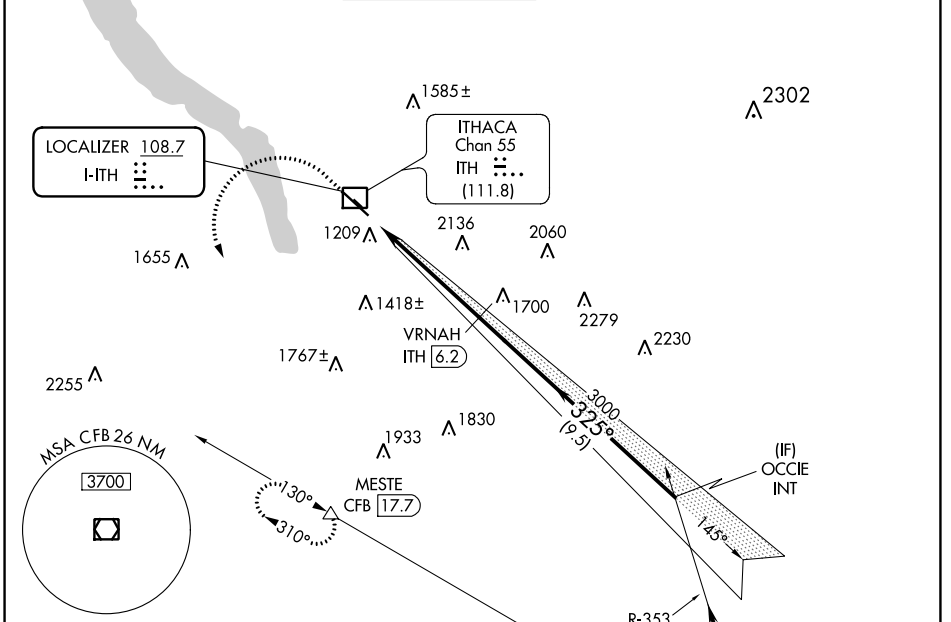


LOC I-ITH	APP CRS	Rwy Idg	6602
108.7	325°	TDZE	1099
		Apt Elev	1099

ILS or LOC RWY 32

ITHACA TOMPKINS INTL (ITH)

DME required.			MALSRL		MISSED APPROACH: Climb to 2600 then climbing left turn to 4000 on heading 180° and CFB VOR/DME R-310 to MESTE/CFB VOR/DME 17.7 DME and hold.
<p>⚠ Circling NA to Rws 15 and 33. Inop table does not apply to S-ILS 32. DME from ITH DME. Simultaneous reception of I-ITH LOC and ITH DME required.</p> <p>❄ -19°C</p>			<p>✈ ITHACA TOWER ★</p> <p>119.6 (CTAF) 0</p>		
ATIS	ELMIRA APP CON ★		GND CON	CLNC DEL	UNICOM
125.175	124.3 257.8		121.8	121.8	122.95



Procedure NA for arrival on CFB VOR/DME airway radials 310 CW 015 and V374 northwest bound.

2600	4000	CFB R-310	MESTE	OCCLIE INT
↑	hdg 180°			
		VRNAH ITH 6.2		
		ITH 0.8	3000	3400
			3000	3400
			325°	3400
				GS 3.20° TCH 54
			2.9 NM	2.6 NM
				9.5 NM

CATEGORY	A	B	C	D
S-ILS 32	1349/24		250 (300-1/2)	
S-LOC 32	2140/40 1041 (1100-3/4)	2140/55 1041 (1100-1)	2140-2 1/2 1041 (1100-2 1/2)	
CIRCLING	2140-1 1/4 1041 (1100-1 1/4)	2140-1 1/2 1041 (1100-1 1/2)	2140-3 1041 (1100-3)	2440-3 1341 (1400-3)

NE-2, 18 MAY 2023 to 15 JUN 2023

NE-2, 18 MAY 2023 to 15 JUN 2023

WAAS CH 62815 W32A	APP CRS 325°	Rwy Idg 6602 TDZE 1099 Apr Elev 1099
--	------------------------	---

RNAV (GPS) RWY 32

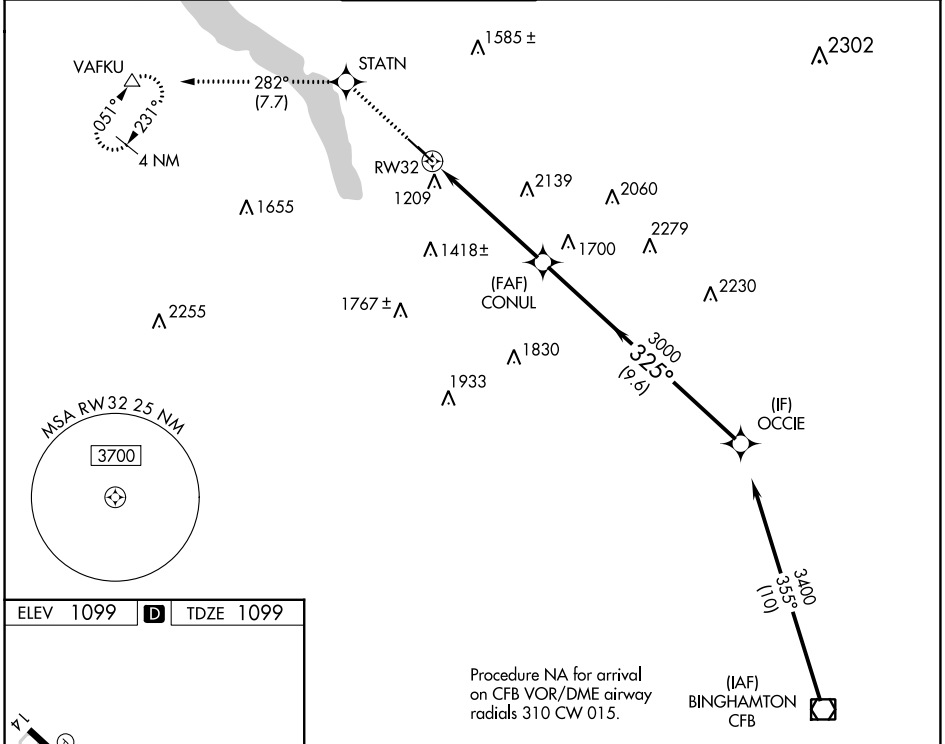
ITHACA TOMPKINS INTL (ITH)

RNP APCH

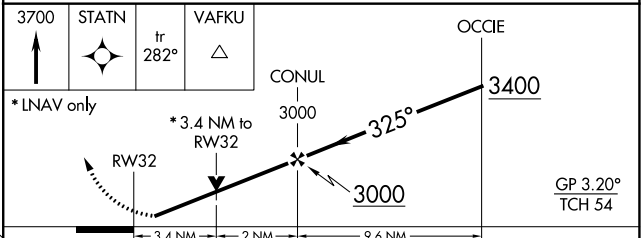
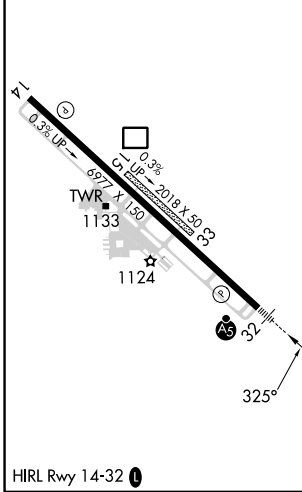
⚠ Circling NA to Rwy's 15 and 33. Inop table does not apply to LNAV Cat A. Rwy 32 helicopter visibility reduction below 3/4 SM NA. When local altimeter setting not received, use Elmira altimeter setting and increase all DA 84 feet and all MDA 100 feet. For inop MALSR, increase LNAV Cat B visibility 1/4 mile. For inop MALSR, when using Elmira altimeter setting, increase LPV all Cats visibility to RVR 6000, and increase LNAV Cat B visibility to 1/2.

MALSR
AS
MISSED APPROACH:
Climb to 3700 direct STATN and on track 282° to VAFKU and hold.

ATIS 125.175	ELMIRA APP CON ★ 124.3 257.8	ITHACA TOWER ★ 119.6 (CTAF) 0	GND CON 121.8	CLNC DEL 121.8	UNICOM 122.95
------------------------	--	---	-------------------------	--------------------------	-------------------------



ELEV 1099	D	TDZE 1099
-----------	----------	-----------



CATEGORY	A	B	C	D
LPV DA	1385/40		286 (300-3/4)	
LNAV MDA	2300/60 1201 (1300-1 1/4)		2300-2 1/2 1201 (1300-2 1/2)	
C CIRCLING	2300-1 1/4 1201 (1300-1 1/4)		2300-3 1201 (1300-3) 2440-3 1341 (1400-3)	

NE-2, 18 MAY 2023 to 15 JUN 2023

NE-2, 18 MAY 2023 to 15 JUN 2023

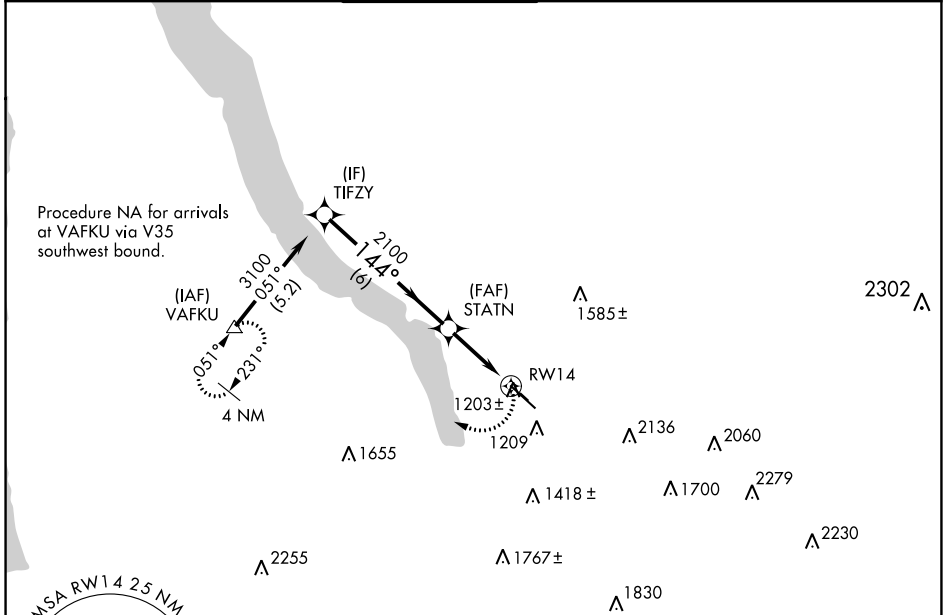
APP CRS	Rwy Idg	6602
144°	TDZE	1083
	Apt Elev	1099

RNAV (GPS) Y RWY 14

ITHACA TOMPKINS INTL (ITH)

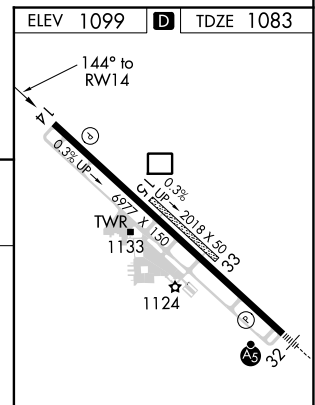
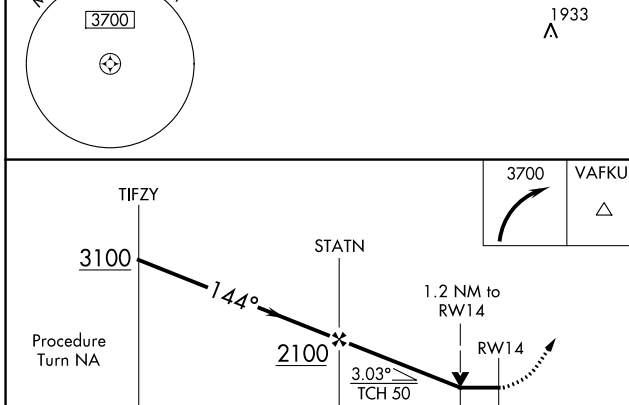
<p>-19°C</p>	<p>DME/DME RNP-0.3 NA. Helicopter visibility reduction below 3/4 SM NA. Circling NA to Rwys 15 and 33.</p>	<p>MISSED APPROACH: Climbing right turn to 3700 direct VAFKU and hold.</p>
--------------	--	--

ATIS 125.175	ELMIRA APP CON ★ 124.3 257.8	ITHACA TOWER ★ 119.6 (CTAF) 0	GND CON 121.8	CLNC DEL 121.8	UNICOM 122.95
------------------------	--	---	-------------------------	--------------------------	-------------------------



NE-2, 18 MAY 2023 to 15 JUN 2023

NE-2, 18 MAY 2023 to 15 JUN 2023



CATEGORY	A	B	C	D
LNVA MDA	1500-1	417 (500-1)	1500-1 1/4	417 (500-1 1/4)
CIRCLING	2040-1 1/4	941 (1000-1 1/4)	2040-2 3/4	941 (1000-2 3/4)

HIRL Rwy 14-32

WAAS CH 50415 W14A	APP CRS 144°	Rwy Idg TDZE Apt Elev	6602 1083 1099
--	------------------------	-----------------------------	---

RNAV (GPS) Z RWY 14

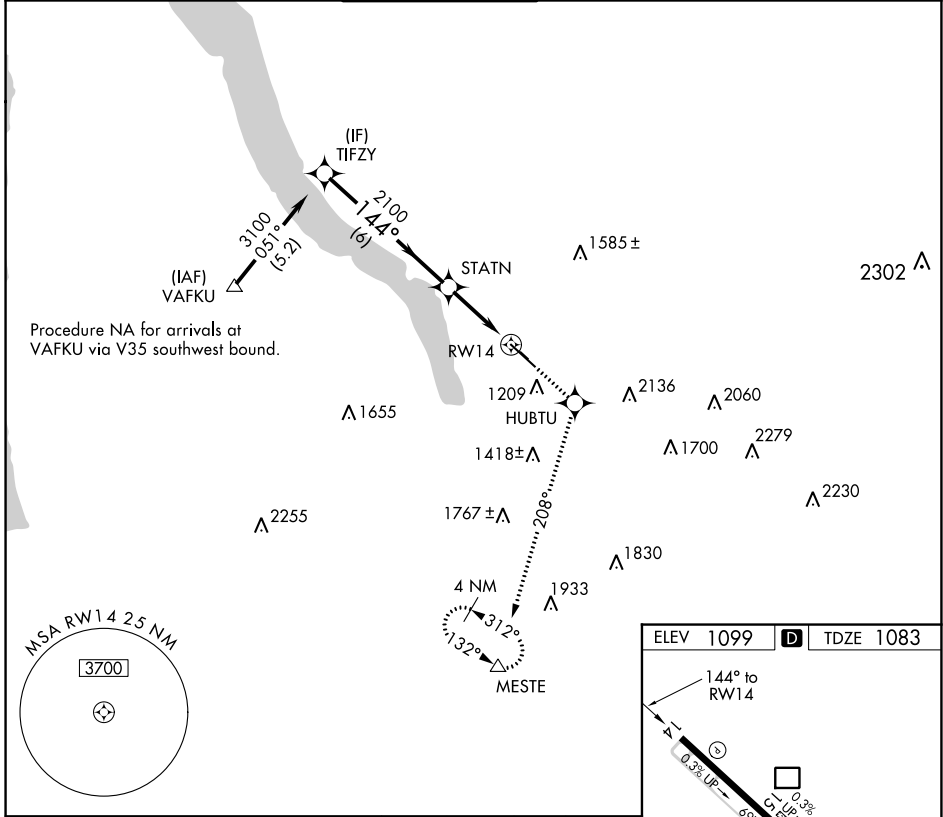
ITHACA TOMPKINS INTL (ITH)

⚠ DME/DME RNP-0.3 NA. Visibility reduction by helicopters NA. When local altimeter setting not received, use Elmira altimeter setting and increase DA 84 feet and LPV all Cats visibility ¼ mile.

⚠ MISSED APPROACH: Climb to 3800 direct HUBTU and via track 208° to MESTE and hold.

❄ -19°C

ATIS 125.175	ELMIRA APP CON ★ 124.3 257.8	ITHACA TOWER ★ 119.6 (CTAF) 0	GND CON 121.8	CLNC DEL 121.8	UNICOM 122.95
------------------------	--	--	-------------------------	--------------------------	-------------------------



NE-2, 18 MAY 2023 to 15 JUN 2023

NE-2, 18 MAY 2023 to 15 JUN 2023

